



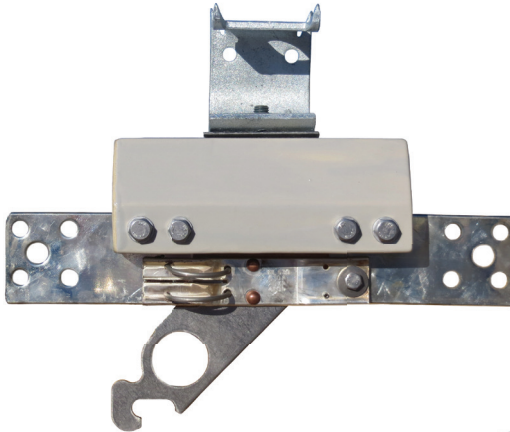
LVI Bottom View



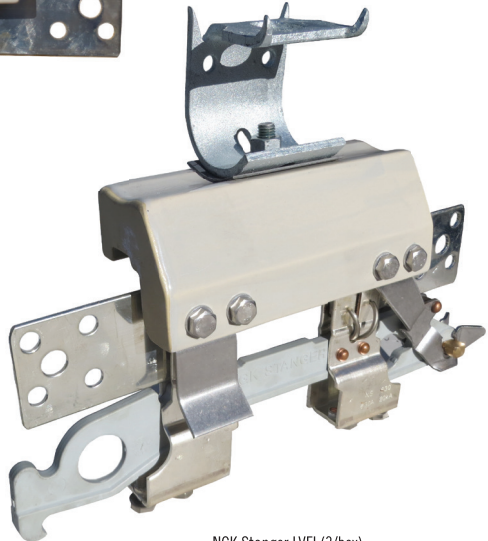
LVI Top View



LVFI Lower End View



NGK Stanger LVI (3/box)



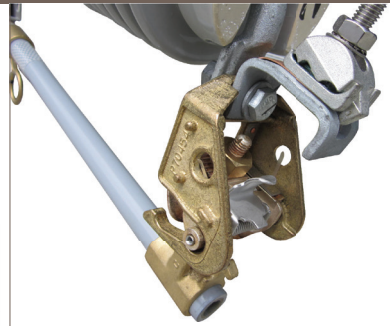
NGK Stanger LVFI (3/box)

SOLID LINK LVI & FUSED LINK LVFI ISOLATORS

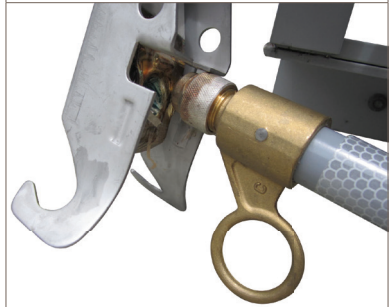
| Part Number | Description | Brand | Origin | Rated Current | Contacts | Standard | Weight | Box/ Drawing | Pallet |
|-------------------------------|----------------------------------|-------|-----------|---------------|----------|-----------------------|--------|--------------|--------|
| Single Solid Link LVI | | | | | | | | | |
| 258377 | NGK-S Low Voltage Isolator | NGK-S | Australia | 480V | 630A | Silver M12 AS175-1975 | 2.5kg | 3 | NZ4284 |
| Single Fused Link LVFI | | | | | | | | | |
| 258385 | NGK-S Low Voltage Fused Isolator | NGK-S | Australia | 480V | 630A | Silver M12 AS175-1975 | 3.3kg | 3 | NZ4286 |



12-24kV 150BIL EDO (100A)



Hinge



Contact Mechanism

100A PORCELAIN EDO C-TYPE DROPOUT SWITCHES

| Part Number | Description | Brand Origin | BIL | Current | Creepage | Breaking | Colour | Standard | Weight | Box/ Pallet | Drawing |
|----------------------------------|----------------------------------|-----------------|-------|---------|----------|-----------|--------|---------------|--------|-------------|-----------------|
| 125BIL EDO with Fuse Tube | | | | | | | | | | | |
| 258431 | NGK-S 12/24kV Porcelain EDO | NGK-S Australia | 125kV | 100A | 300mm | 8kA@ 12kV | Grey | AS/NZS 1033.1 | 9.1kg | 1/42 | 72297/12 |
| 150BIL EDO with Fuse Tube | | | | | | | | | | | |
| 539023 | NGK-S 12/24kV Porcelain EDO | NGK-S Australia | 150kV | 100A | 475mm | 8kA@ 12kV | Grey | AS/NZS 1033.1 | 12.8kg | 1/42 | 72298/15 |
| 170BIL EDO with Fuse Tube | | | | | | | | | | | |
| 539031 | NGK-S 24/36kV Porcelain EDO | NGK-S Australia | 170kV | 100A | 600mm | 6kA@ 24kV | Grey | AS/NZS 1033.1 | 13.3kg | 1/28 | 72299/ 27NORQEB |
| EDO Optional Accessories | | | | | | | | | | | |
| | NGK-S EDO Earthing Stirrup | NGK-S Australia | | | | | | | | | 70450/6 |
| | NGK-S EDO Fire Prevention Device | NGK-S Australia | | | | | | | | | 72835 |
| | NGK-S EDO Birdproof Cover | NGK-S Australia | | | | | | | | | 72905 |

NGK STANGER Polymer EDO Dropouts



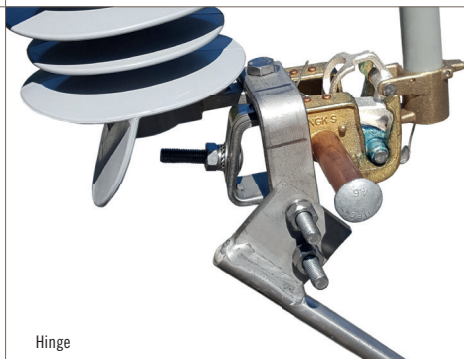
170BIL EDO with
Earthing Stirrup



170BIL EDO



Earthing Stirrup



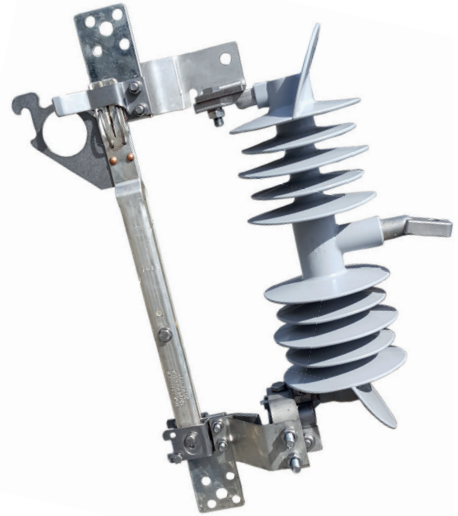
Hinge

100A POLYMER EDO C-TYPE DROP OUT SWITCHES

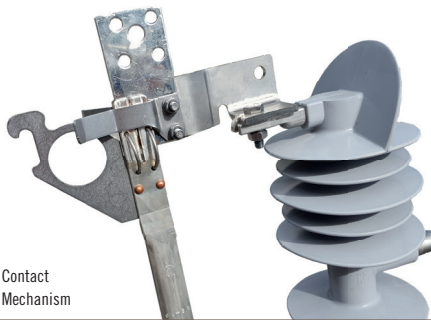
| Part Number | Description | Brand | Origin | BIL | Current | Creepage | Breaking | Colour | Weight | Box/ Pallet | Drawing |
|-------------|---------------------------|-------|-----------|-------|---------|----------|------------|--------|--------|-------------|----------|
| 539384 | NGK-S 12/24kV Polymer EDO | NGK-S | Australia | 150kV | 100A | 820mm | 8kA @ 12kV | Grey | 4.7kg | 1/42 | 72298/17 |
| 539341 | NGK-S 24/36kV Polymer EDO | NGK-S | Australia | 170kV | 100A | 1045mm | 6kA @ 24kV | Grey | 4.9kg | 1/22 | 72299/26 |



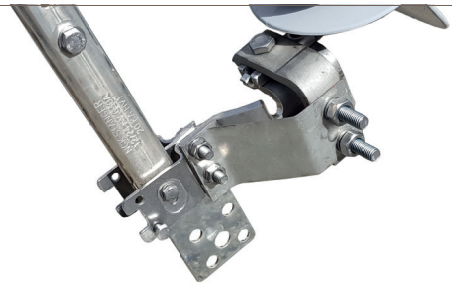
150BIL HVI with
Earthing Stirrup



150BIL HVI



Contact
Mechanism



Hinge

630A POLYMER HVI C-TYPE SOLID LINKS

| Part Number | Description | Brand Origin | BIL | Current | Creepage | Breaking | Colour | Standard | Weight | Box/ Pallet | Drawing |
|-------------------|-------------------------------|-----------------|-------|---------|----------|--------------|--------|----------|--------|----------------|-----------|
| 150BIL HVI | | | | | | | | | | | |
| 539376 | NGK-S 12/24kV Single Pole HVI | NGK-S Australia | 150kV | 630A | 820mm | 20kA @ 1 sec | Grey | AS1306 | 6.8kg | 1/24 | 70414/EE |
| 170BIL HVI | | | | | | | | | | | |
| 539368 | NGK-S 24/36kV Single Pole HVI | NGK-S Australia | 170kV | 630A | 1045mm | 20kA @ 1 sec | Grey | AS1306 | 7.2kg | 1/24 | 70423/2EE |



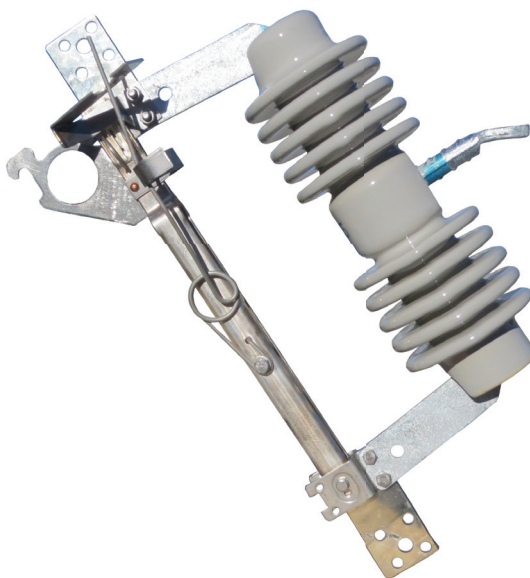
Made in Australia



Hinge



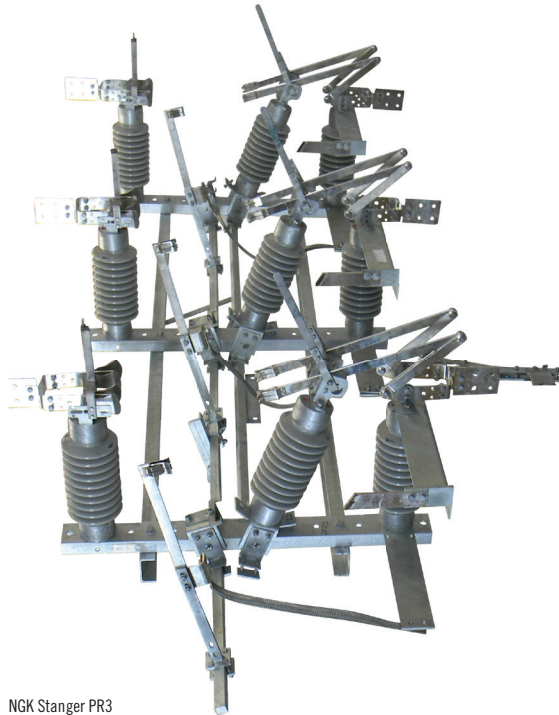
Contact Mechanism



12-24kV 150BIL HVI (630A)

630A PORCELAIN HVI C-TYPE SOLID LINKS

| Part Number | Description | Brand Origin | BIL | Current | Creepage | S/T Current | Colour | Standard | Weight | Box/ Pallet | Drawing |
|--|---|-----------------|------------|---------|--------------|-------------|-------------|----------|--------|-------------|---------|
| 125BIL HVI | | | | | | | | | | | |
| 253634 | NGK-S 12kV Single Pole HVI | NGK-S Australia | 125kV 630A | 300mm | 20kA at 1sec | Grey | AS/NZS 1025 | 9.0kg | 1/28 | 70416WBB | |
| 253014 | NGK-S 12/24kV Single Pole HVI | NGK-S Australia | 125kV 630A | 300mm | 20kA at 1sec | Grey | AS/NZS 1025 | 9.0kg | 1/28 | 70416/NSW | |
| 150BIL HVI | | | | | | | | | | | |
| 539058 | NGK-S 12/24kV Single Pole HVI | NGK-S Australia | 150kV 630A | 475mm | 20kA at 1sec | Grey | AS/NZS 1306 | 10.5kg | 1/28 | 70414/NSW | |
| 170BIL HVI | | | | | | | | | | | |
| 539228 | NGK-S 24/36kV Single Pole HVI | NGK-S Australia | 170kV 630A | 600mm | 20kA at 1sec | Grey | AS/NZS 1306 | 12.0kg | 1/28 | 70423/1 | |
| 539007 | NGK-S 24/36kV Single Pole HVI | NGK-S Australia | 170kV 630A | 600mm | 20kA at 1sec | Grey | AS/NZS 1306 | 12.0kg | 1/28 | 70423/1EE | |
| 539236 | NGK-S 24/36kV Single Pole HVI + Earth Stirrup | NGK-S Australia | 170kV 630A | 600mm | 20kA at 1sec | Grey | AS/NZS 1306 | 13.5kg | 1/28 | 70423/2CE | |
| Universal Mounting Brackets for NGK-S HVI | | | | | | | | | | | |
| 253006 | NGK-S HVI Mounting Bracket (Z) | NGK-S Australia | | | | | | | | | 69196 |
| 253472 | NGK-S HVI Mounting Bracket (Y) | NGK-S Australia | | | | | | | | | 69194 |



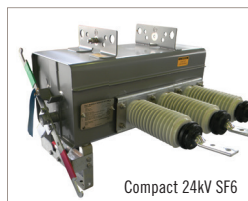
NGK Stanger PR3

MANUAL PR3 AIR BREAK SWITCHES

| Part Number | Description | Brand | Origin | Rating | Current | BIL | Rate S/T Current | Standard | Drawing |
|--|---------------------------------------|-------|-----------|--------|---------|-------|------------------|----------------------|---------|
| Manual Flicker Style Air Break Switches | | | | | | | | | |
| 539139 | NGK-S 12kV PR3 Vert/Hor ABS | NGK-S | Australia | 12kV | 630A | 150kV | 20kA at 1sec | AS/NZS ISO 9001:2008 | 69118 |
| 539147 | NGK-S 24kV PR3 Vert/Hor ABS | NGK-S | Australia | 24kV | 630A | 150kV | 16kA at 1sec | AS/NZS ISO 9001:2008 | 69119 |
| 539155 | NGK-S 36kV PR3 Vert/Hor ABS | NGK-S | Australia | 36kV | 630A | 200kV | 20kA at 1sec | AS/NZS ISO 9001:2008 | 69120 |
| Optional Accessories for NGK-S ABS | | | | | | | | | |
| | NGK-S ABS Earth Switch (24&36kV only) | NGK-S | Australia | | | | | | |
| | NGK-S ABS Dropout Fuse Mount | NGK-S | Australia | | | | | | |
| | NGK-S ABS Crossarm | NGK-S | Australia | | | | | | |
| | NGK-S ABS Operating Handle | NGK-S | Australia | | | | | | |
| | NGK-S ABS Mounting Bracket Kit | NGK-S | Australia | | | | | | |
| | NGK-S ABS Double Break Interrupter | NGK-S | Australia | | | | | | |
| | NGK-S ABS ARCBREK 5 Interrupter | NGK-S | Australia | | | | | | |



Compact 12kV SF6 (NGK Stanger 91776)



Compact 24kV SF6

MANUAL SF6 LOAD BREAK GAS SWITCHES

| Part Number | Description | Brand | Origin | Rating | Current | Making Standard | Current | Weight | Drawing |
|---|---|-------|-----------|--------|---------|-----------------|----------------------|--------|---------|
| Manual SF6 Gas Switches | | | | | | | | | |
| 539082 | NGK-S 12kV SF6 Compact Gas Switch | NGK-S | Australia | 12kV | 630A | 41.6kA | AS/NZS ISO 9001:2008 | 75kg | 91776 |
| 539090 | NGK-S 24kV SF6 Compact Gas Switch | NGK-S | Australia | 24kV | 630A | 41.6kA | AS/NZS ISO 9001:2008 | 95kg | 90030 |
| 539104 | NGK-S 36kV SF6 Gas Switch | NGK-S | Australia | 36kV | 630A | 33kA | AS/NZS ISO 9001:2008 | 180kg | 90036 |
| Optional Accessories for all SF6 | | | | | | | | | |
| | NGK-S SF6 Safety Locking Kit | NGK-S | Australia | | | | | | 91777 |
| Optional Accessories for 12&24kV SF6 | | | | | | | | | |
| | NGK-S SF6 12/24 Crossarm | NGK-S | Australia | | | | | | 91743 |
| | NGK-S SF6 12/24 Surge Diverter Mounting Kit | NGK-S | Australia | | | | | | 91806 |
| | NGK-S SF6 12/24 Mid Pole Actuator Kit | NGK-S | Australia | | | | | | 95110 |
| Optional Accessories for 36kV SF6 | | | | | | | | | |
| | NGK-S SF6 36 Crossarm | NGK-S | Australia | | | | | | 90481 |
| | NGK-S SF6 36 Pole Top Mounting Kit | NGK-S | Australia | | | | | | 90498 |
| | NGK-S SF6 36 Surge Diverter Mounting Kit | NGK-S | Australia | | | | | | 95001 |

NGK STANGER FSD Disconnects



3 x FSD 401



FSD 401



FSD 401 Bracket

FSD400



FSD401

FSD THREE & SINGLE PHASE DIN FUSE DISCONNECTS (AS/NZS 3947-1)

| Part Number | Description | Brand | Origin | Rated Amps | Fits | Terminations | Weight | Box Qty | Drawing |
|-----------------------------|------------------------------------|-------|-----------|------------|------|--------------|-----------------------------|---------|-----------|
| FSD 160A Disconnects | | | | | | | | | |
| 539252 | NGK-S FSD160 Single Phase | NGK-S | Australia | 415V | 160A | NH00 | IPC/IPC 6-95mm ² | 1.0kg | 1 71932 |
| 539260 | NGK-S Bracket for 3 x FSD160 | NGK-S | Australia | 415V | | | | 1.7kg | 1 72485/2 |
| FSD 250A Disconnects | | | | | | | | | |
| 539279 | NGK-S FSD250 Three Phase + Bracket | NGK-S | Australia | 415V | 250A | NH1&2 | IPC/IPC 6-95mm ² | 6.0kg | 1 72477/1 |
| FSD 400A Disconnects | | | | | | | | | |
| 468908 | NGK-S FSD400 Three Phase + Bracket | NGK-S | Australia | 415V | 400A | NH1&2 | 4.76mm T/Palms | 6.0kg | 1 71969/5 |
| 468916 | NGK-S FSD401 Single Phase | NGK-S | Australia | 415V | 400A | NH1,2&3 | 4.76mm T/Palms | 2.0kg | 1 73401/5 |
| 469106 | NGK-S Bracket for 3 x FSD401 | NGK-S | Australia | 415V | | | | 1.7kg | 1 72923 |
| FSD 630A Disconnect | | | | | | | | | |
| 468819 | NGK-S FSD631 Single Phase | NGK-S | Australia | 415V | 630A | NH2&3 | 6.35mm T/Palms | 2.0kg | 1 73631/5 |