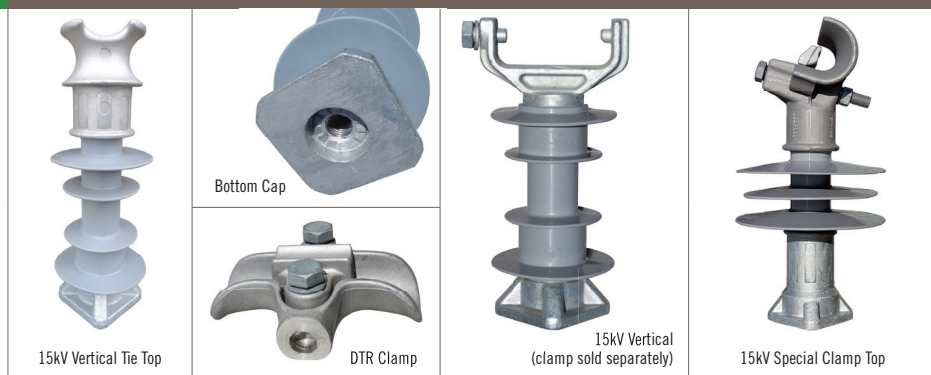


DTR 15kV LINE POSTS (Tie Top & Clamp Top)



15kV POLYMER LINE POST INSULATORS (TIE TOP & CLAMP TOP)

Part Number	Description	Brand	Origin	Creepage kN	Top	Colour	Clamp & Stud	Unit	Weight	Box/ Pallet	Drawing
15kV Vertical Line Posts											
553239	DTR 15kV Vertical Tie Top Line Post	DTR	Korea	357mm	12.5 Tie Top	Grey	Separate	Each	3.5kg	6/120	DTR-LPCN-15SK-NZI
553859	DTR 15kV Vertical Tie Top Line Post (HP)	DTR	Korea	476mm	12.5 Tie Top	Grey	Separate	Each	4.0kg	6/120	LPCN-15SK-HP-M20
553093	DTR 15kV Vertical Clamp Top Line Post	DTR	Korea	322mm	12.5 Clamp Top	Grey	Separate	Each	4.5kg	6/120	DTR-LPV15SK-NZI
553867	DTR 15kV Vertical Clamp Top Line Post (HP)	DTR	Korea	476mm	12.5 Clamp Top	Grey	Separate	Each	5.0kg	6/120	LPV-15SK-HP-1-M20
553875	DTR 15kV Vertical Special Clamp Top Line Post	DTR	Korea	357mm	12.5 Clamp Top	Grey	Separate	Each	5.0kg	6/120	LPSC-15SK-M20
553883	DTR 15kV Vertical Special Clamp Top Line Post (HP)	DTR	Korea	476mm	12.5 Clamp Top	Grey	Separate	Each	5.5kg	6/120	LPSC-15SK-HP-M20
Part Number	Description	Brand	Origin	Conductor Range	Length	Width	Construction	Unit	Weight	Box Qty	Drawing
Clamp options for DTR 15kV Line Posts (sold separately)											
553727	DTR 13-27mm Trunnion Clamp	DTR	Korea	13-27mm	135mm	98mm	Aluminium	Each	650g	6	DTR-ATC-106
461792	AX 10-38mm Trunnion Clamp	AX	NZ	10-38mm	127mm	98mm	Aluminium	Each	450g	12	D330-0501
Part Number	Description	Brand	Origin	Length	Diameter	Fixings	Unit	Weight	Box/ Pallet	Drawing	
Stud options for DTR 15kV Line Posts (sold separately)											
553662	DTR 48mm Line Post Stud	DTR	Korea	48mm	M20	FW/SW/FN	Each	300g	96	STD48M20	
553581	DTR 160mm Line Post Stud	DTR	Korea	160mm	M20	FW/SW/FN	Each	700g	72	STD160M20	
553697	DTR 200mm Line Post Stud	DTR	Korea	200mm	M20	FW/SW/FN	Each	850g	48	STD200M20	
Gain Bases for DTR 15kV Line Posts (sold separately)											
553174	DTR Vertical Gain Base	DTR	Korea	300mm			Each	4.5kg	6/60	DTR-GBV	



15kV Vertical Tie Top Line Post



M16 Stud Bolt Set



Tie Top

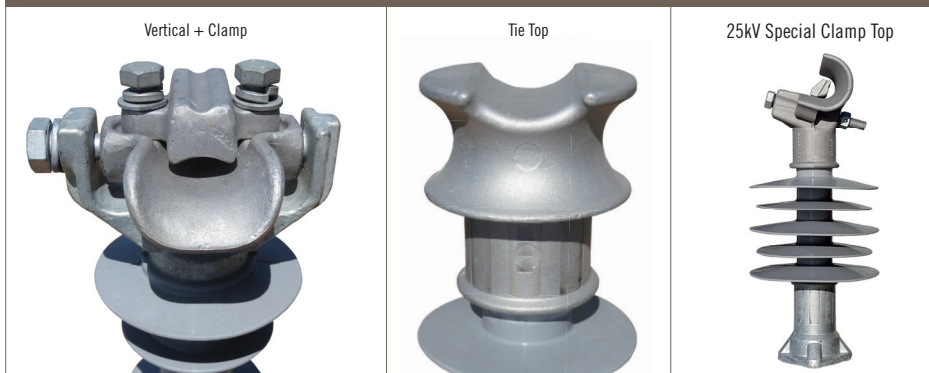


Bottom View

15kV POLYMER LINE POST INSULATOR (TIE TOP)

Part Number	Description	Brand	Origin	Creepage	kN	Top	Colour	Unit	Weight	Box/ Pallet	Drawing
553778	DTR 15kV Vertical Tie Top Line Post	DTR	Korea	540mm	12.5	Tie Top	Grey	Each	2.5kg	6/120	DTR-LPCN-15SK-SP
includes	M16 Stud Bolt Set	DTR	Korea					Each	0.5kg		STD160M16

DTR 25kV LINE POSTS (Tie Top & Clamp Top)



25kV POLYMER LINE POST INSULATORS (TIE TOP & CLAMP TOP)

Part Number	Description	Brand	Origin	Creepage kN	Top	Colour	Clamp & Stud	Unit	Weight	Box/ Pallet	Drawing
25kV Vertical Line Posts											
553247	DTR 25kV Vertical Tie Top Line Post	DTR	Korea	551mm	12.5 Tie Top	Grey	Separate	Each	4.0kg	6/120	LPFN-25SK-M20
553891	DTR 25kV Vertical Tie Top Line Post (HP)	DTR	Korea	783mm	12.5 Tie Top	Grey	Separate	Each	4.5kg	6/120	LPFN-25SK-HP-M20
553115	DTR 25kV Vertical Clamp Top Line Post	DTR	Korea	516mm	12.5 Clamp Top	Grey	Separate	Each	4.5kg	6/120	LPV-25SK-M20
553905	DTR 25kV Vertical Clamp Top Line Post (HP)	DTR	Korea	783mm	12.5 Clamp Top	Grey	Separate	Each	5.0kg	6/120	LPV-25SK-HP-1-M20
553913	DTR 25kV Vertical Special Clamp Top Line Post	DTR	Korea	551mm	12.5 Clamp Top	Grey	Separate	Each	5.0kg	6/120	LPSC-25SK-M20
553921	DTR 25kV Vertical Special Clamp Top Line Post (HP)	DTR	Korea	783mm	12.5 Clamp Top	Grey	Separate	Each	5.5kg	6/120	LPSC-25SK-HP-M20
Part Number	Description	Brand	Origin	Conductor Range	Length	Width	Construction	Unit	Weight	Box Qty	Drawing
Clamp options for DTR 25kV Line Posts (sold separately)											
553727	DTR 13-27mm Trunnion Clamp	DTR	Korea	13-27mm	135mm	98mm	Aluminium	Each	650g	6	DTR-ATC-106
461792	AX 10-38mm Trunnion Clamp	AX	NZ	10-38mm	127mm	98mm	Aluminium	Each	450g	12	D330-0501
Part Number	Description	Brand	Origin	Length	Diameter	Fixings	Unit	Weight	Box/ Pallet	Drawing	
Stud options for DTR 25kV Line Posts (sold separately)											
553662	DTR 48mm Line Post Stud	DTR	Korea	48mm	M20	FW/SW/FN	Each	300g	96	STD48M20	
553581	DTR 160mm Line Post Stud	DTR	Korea	160mm	M20	FW/SW/FN	Each	700g	72	STD160M20	
553697	DTR 200mm Line Post Stud	DTR	Korea	200mm	M20	FW/SW/FN	Each	850g	48	STD200M20	
Gain Bases for DTR 25kV Line Posts (sold separately)											
553174	DTR Vertical Gain Base	DTR	Korea	300mm				Each	4.5kg	6/60	DTR-GBV

DTR 35kV LINE POSTS (Tie Top & Clamp Top)



DTR 35kV Clamp Top
(clamp sold separately)



DTR 35kV Tie Top



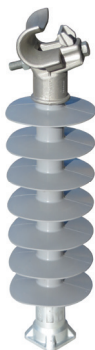
35kV Special Clamp Top



DTR Clamp

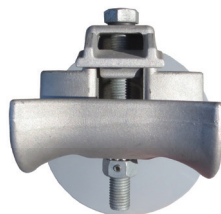
35kV POLYMER LINE POST INSULATORS (TIE TOP & CLAMP TOP)

Part Number	Description	Brand Origin			Creepage kN	Top	Colour		Clamp & Stud	Unit	Weight	Box/ Drawing Pallet	
35kV Vertical Line Posts													
553255	DTR 35kV Vertical Tie Top Line Post	DTR	Korea	648mm	12.5	Tie Top	Grey	Separate	Each	4.5kg	6/120	LPFN-35SK-M20	
553948	DTR 35kV Vertical Tie Top Line Post (HP)	DTR	Korea	1090mm	12.5	Tie Top	Grey	Separate	Each	5.0kg	6/120	LPFN-35SK-HP-M20	
553131	DTR 35kV Vertical Clamp Top Line Post	DTR	Korea	613mm	12.5	Clamp Top	Grey	Separate	Each	5.0kg	6/120	DTR-LPV-35SK-NZI	
553956	DTR 35kV Vertical Clamp Top Line Post (HP)	DTR	Korea	1090mm	12.5	Clamp Top	Grey	Separate	Each	5.5kg	6/120	LPV-35SK-HP-1-M20	
553964	DTR 35kV Vertical Special Clamp Top Line Post	DTR	Korea	648mm	12.5	Clamp Top	Grey	Separate	Each	5.5kg	6/120	LPSC-35SK-M20	
553972	DTR 35kV Vertical Special Clamp Top Line Post (HP)	DTR	Korea	1090mm	12.5	Clamp Top	Grey	Separate	Each	6.0kg	6/120	LPSC-35SK-HP-M20	
Part Number	Description	Brand	Origin	Conductor Range	Length	Width	Construction	Unit	Weight	Box Qty	Drawing		
Clamp options for DTR 35kV Line Posts (sold separately)													
553727	DTR 13-27mm Trunnion Clamp	DTR	Korea	13-27mm	135mm	98mm	Aluminium	Each	650g	6	DTR-ATC-106		
461792	AX 10-38mm Trunnion Clamp	AX	NZ	10-38mm	127mm	98mm	Aluminium	Each	450g	12	D330-0501		
Part Number	Description	Brand	Origin	Length	Diameter	Fixings	Unit	Weight	Box/ Pallet	Drawing			
Stud options for DTR 35kV Line Posts (sold separately)													
553662	DTR 48mm Line Post Stud	DTR	Korea	48mm	M20	FW/SW/FN	Each	300g	96	STD48M20			
553581	DTR 160mm Line Post Stud	DTR	Korea	160mm	M20	FW/SW/FN	Each	700g	72	STD160M20			
553697	DTR 200mm Line Post Stud	DTR	Korea	200mm	M20	FW/SW/FN	Each	850g	48	STD200M20			
Gain Bases for DTR 35kV Line Posts (sold separately)													
553174	DTR Vertical Gain Base	DTR	Korea	300mm				Each	4.5kg	6/60	DTR-GBV		

DTR 46kV LINE POSTS (Tie Top & Clamp Top)

46kV Vertical Line Post

Special Clamp



Graphite Cast Iron

46kV POLYMER LINE POST INSULATORS (TIE TOP & CLAMP TOP)

Part Number	Description	Brand	Origin	Creepage	kN	Top	Colour	Clamp & Stud	Unit	Weight	Box/ Drawing Pallet
46kV Vertical Line Posts											
553980	DTR 46kV Vertical Tie Top Line Post	DTR	Korea	1195mm	12.5	Tie Top	Grey	Separate	Each	6.5kg	1/60 LPFN-46SK-M20
553999	DTR 46kV Vertical Tie Top Line Post (HP)	DTR	Korea	1703mm	12.5	Tie Top	Grey	Separate	Each	6.5kg	1/60 LPFN-46SK-HP-M20
554006	DTR 46kV Vertical Clamp Top Line Post	DTR	Korea	1195mm	12.5	Clamp Top	Grey	Separate	Each	7.0kg	1/60 LPV-46SK-M20
554014	DTR 46kV Vertical Clamp Top Line Post (HP)	DTR	Korea	1703mm	12.5	Clamp Top	Grey	Separate	Each	7.0kg	1/60 LPV-46SK-HP-M20
554022	DTR 46kV Vertical Special Clamp Top Line Post	DTR	Korea	1195mm	12.5	Clamp Top	Grey	Separate	Each	7.0kg	1/60 LPSC-46SK-M20
554030	DTR 46kV Vertical Special Clamp Top Line Post (HP)	DTR	Korea	1703mm	12.5	Clamp Top	Grey	Separate	Each	7.5kg	1/60 LPSC-46SK-HP-M20

Part Number	Description	Brand	Origin	Conductor Range	Length	Width	Construction	Unit	Weight	Box Qty	Drawing
Clamp options for DTR 46kV Line Posts (sold separately)											
553727	DTR 13-27mm Trunnion Clamp	DTR	Korea	13-27mm	135mm	98mm	Aluminium	Each	650g	6	DTR-ATC-106
461792	AX 10-38mm Trunnion Clamp	AX	NZ	10-38mm	127mm	98mm	Aluminium	Each	450g	12	D330-0501

Part Number	Description	Brand	Origin	Length	Diameter	Fixings	Unit	Weight	Box/ Pallet	Drawing
Stud options for DTR 46kV Line Posts (sold separately)										
553662	DTR 48mm Line Post Stud	DTR	Korea	48mm	M20	FW/SW/FN	Each	300g	96	STD48M20
553581	DTR 160mm Line Post Stud	DTR	Korea	160mm	M20	FW/SW/FN	Each	700g	72	STD160M20
553697	DTR 200mm Line Post Stud	DTR	Korea	200mm	M20	FW/SW/FN	Each	850g	48	STD200M20

Gain Bases for DTR 46kV Line Posts (sold separately)

553174	DTR Vertical Gain Base	DTR	Korea	300mm			Each	4.5kg	6/60	DTR-GBV
--------	------------------------	-----	-------	-------	--	--	------	-------	------	---------

DTR 69kV LINE POSTS (Tie Top & Clamp Top)



69kV POLYMER LINE POST INSULATORS (TIE TOP & CLAMP TOP)

Part Number	Description	Brand Origin		Creepage	kN	Top	Colour Clamp & Stud		Unit	Weight	Box/ Drawing	Pallet
69kV Vertical Line Posts												
553166	DTR 69kV Vertical Tie Top Line Post	DTR	Korea	1387mm	11.0	Tie Top	Grey	Separate	Each	7.0kg	1/60	DTR-LPFN-69SK-NZI
554049	DTR 69kV Vertical Tie Top Line Post (HP)	DTR	Korea	2330mm	12.5	Tie Top	Grey	Separate	Each	7.5kg	1/60	LPFN-69SK-HP-M20
553212	DTR 69kV Vertical Clamp Top Line Post	DTR	Korea	1387mm	11.0	Clamp Top	Grey	Separate	Each	8.0kg	1/60	DTR-LPV69SK-NZI
554057	DTR 69kV Vertical Clamp Top Line Post (HP)	DTR	Korea	2330mm	12.5	Clamp Top	Grey	Separate	Each	8.0kg	1/60	LPV-69SK-HP-1-M20
554065	DTR 69kV Vertical Special Clamp Top Line Post	DTR	Korea	1387mm	12.5	Clamp Top	Grey	Separate	Each	8.0kg	1/60	LPSC-69SK-M20
554073	DTR 69kV Vertical Special Clamp Top Line Post (HP)	DTR	Korea	2330mm	12.5	Clamp Top	Grey	Separate	Each	8.5kg	1/60	LPSC-69SK-HP-M20
Part Number	Description	Brand	Origin	Conductor Range	Length	Width	Construction		Unit	Weight	Box Qty	Drawing
Clamp options for DTR 69kV Line Posts (sold separately)												
553727	DTR 13-27mm Trunnion Clamp	DTR	Korea	13-27mm	135mm	98mm	Aluminium		Each	650g	6	DTR-ATC-106
461792	AX 10-38mm Trunnion Clamp	AX	NZ	10-38mm	127mm	98mm	Aluminium		Each	450g	12	D330-0501
Part Number	Description	Brand	Origin	Length	Diameter	Fixings	Unit	Weight	Box/ Pallet	Drawing		
Stud options for DTR 69kV Line Posts (sold separately)												
553662	DTR 48mm Line Post Stud	DTR	Korea	48mm	M20	FW/SW/FN	Each	300g	96	STD48M20		
553581	DTR 160mm Line Post Stud	DTR	Korea	160mm	M20	FW/SW/FN	Each	700g	72	STD160M20		
553697	DTR 200mm Line Post Stud	DTR	Korea	200mm	M20	FW/SW/FN	Each	850g	48	STD200M20		
Gain Bases for DTR 69kV Line Posts (sold separately)												
553174	DTR Vertical Gain Base	DTR	Korea	300mm				Each	4.5kg	6/60	DTR-GBV	



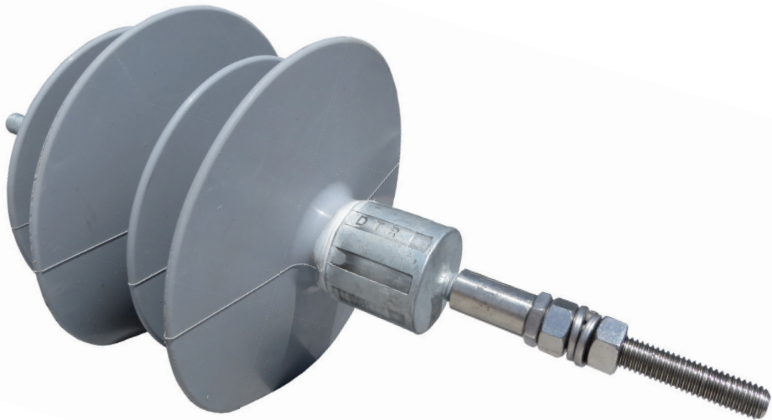
TR208 25kV Station Post

15-220kV POLYMER STATION POST INSULATORS

Part Number	Description	Brand	Origin	Rated	Creepage	Length	kN	Sheds	Colour	Weight	Box Qty	Drawing
7.5kV Station Post												
554383	DTR TR202 7.5kV Station Post	DTR	Korea	7.5kV	300mm	190mm	8.9	3	Grey	3.2kg	6	SPB008-TR202-M3
15kV Station Post												
553263	DTR TR205 15kV Station Post	DTR	Korea	15kV	529mm	254mm	12.5	5	Grey	3.2kg	6	SPB015-TR205-M3
25kV Station Post												
553271	DTR TR208 25kV Station Post	DTR	Korea	25kV	824mm	357mm	12.5	7	Grey	4.1kg	6	SPB025-TR208-M3
35kV Station Post												
553298	DTR TR210 35kV Station Post	DTR	Korea	35kV	1117mm	457mm	12.5	9	Grey	4.5kg	6	SPB035-TR210-M3
46kV Station Post												
553301	DTR TR214 46kV Station Post	DTR	Korea	46kV	1436mm	559mm	12.5	11	Grey	5.5kg	6	SPB046-TR214-M3
69kV Station Post												
553328	DTR TR216 69kV Station Post	DTR	Korea	69kV	1884mm	762mm	12	15	Grey	7.7kg	6	SPB069-TR216-M3
150kV Station Post												
553352	DTR TR291 150kV Station Post	DTR	Korea	150kV	4128mm	1704mm	8	24	Grey	20.4kg	1	DTR-TR291SK-HP-M
220kV Station Post												
553360	DTR TR312 220kV Station Post	DTR	Korea	220kV	5854mm	2336mm	5.5	34	Grey	30.2kg	1	DTR-TR312SK-M



Avon Crucifix Bracket



DTR Crucifix Standoff

GALVANISED STEEL CRUCIFIX BRACKET & POLYMER STANDOFF

Part Number	Description	Brand	Origin	Length	Width	Thick	Holes	Unit	Weight	Pack Qty	Drawing
Crucifix Bracket (HDG to 4680:2006)											
537055	Avon 11kV Crucifix Bracket only	Avon	NZ	920mm	340mm	6mm	14mm	Each	4.8kg	5	AA18206

Part Number	Description	Brand	Origin	Rated	Creepage	Length	Stud	Colour	Unit	Weight	Box/ Pallet	Drawing
Polymer Standoff for 11kV Crucifix (IEC 61109)												
553069	DTR 15kV Crucifix Standoff	DTR	Korea	15kV	550mm	328mm	M12	Grey	Each	1.8kg	6/300	ISA3-0550-GSS

70kN Galv Steel Clevis



70kN Aluminium Clevis



HDG Thimble



Clevis Close Up



Aluminium Side Profile



Steel Side Profile



Polymer Strain Aluminium Bundle

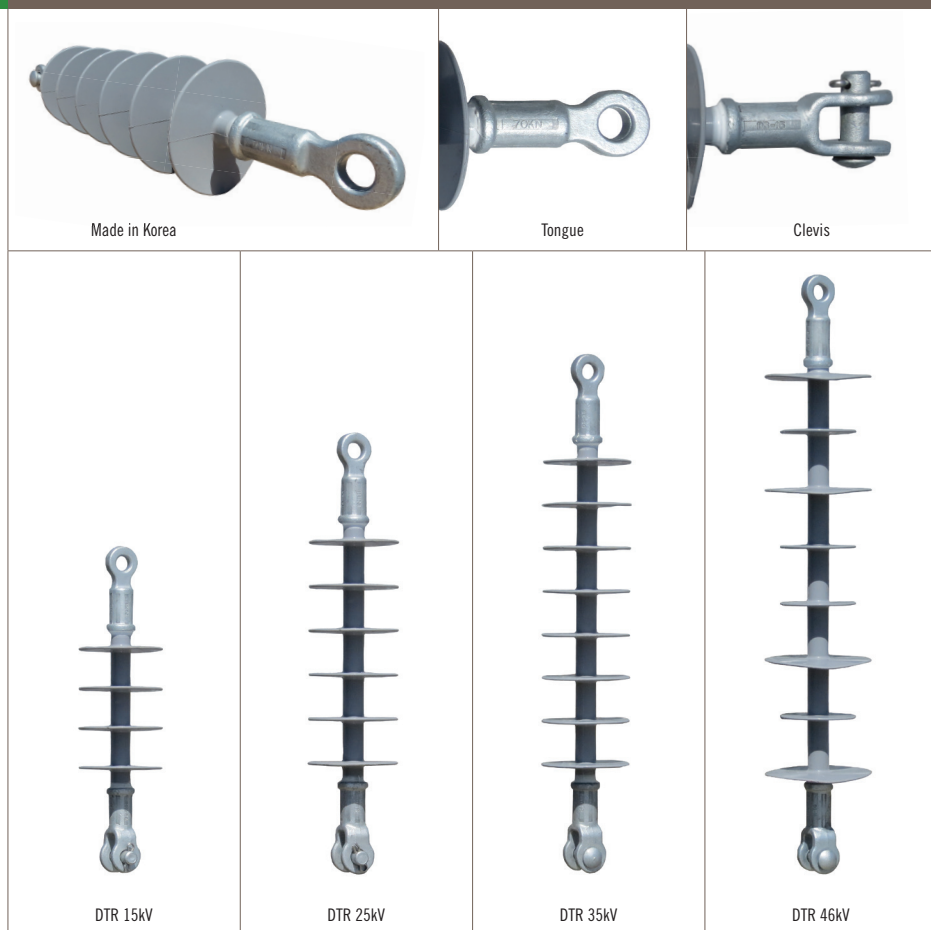


Polymer Strain Galv Steel Bundle

CLEVIS THIMBLES & POLYMER STRAIN BUNDLES

Part Number	Description	Brand	Origin	Strength	Length	Int Width	Loop	Unit	Weight	Box Qty	Drawing
Clevis Thimbles											
536342	AX Aluminium Clevis Thimble	AX	China	70kN	132mm	30mm	57mm	Each	470g	30	D374-2140
536393	AX Galv Steel Clevis Thimble	AX	China	70kN	146mm	25mm	57mm	Each	650g	30	D374-2142
HDG Thimble											
536407	AX 16mm Galv Thimble	AX	NZ		80mm	16mm	57mm	Each	100g	10	
Preassembled Polymer Strain Bundles											
553336	DTR 15kV Polymer Strain + AX Aluminium Clevis + Avon 32/200M16 Eye Bolt								2.1kg	10	
553344	DTR 15kV Polymer Strain + AX Galv Steel Clevis + Avon 32/200M16 Eye Bolt								2.3kg	10	

DTR Polymer STRAINS – 15/25/35/46kV



POLYMER STRAIN INSULATORS

Part Number	Description	Brand	Origin	Rated kV	End Fittings	Creepage	Sheds	Length	Colour	Weight	Box/ Pallet	Drawing
Polymer Strains (IEC 61109)												
553018	DTR 15kV Polymer Strain	DTR	Korea	15kV	70 Tongue & Clevis	459	4	347	Grey	0.8kg	10/640	ISA7-0459-AGH
553751	DTR 15kV Polymer Strain	DTR	Korea	15kV	70 Eye & Eye	459	4	347	Grey	0.8kg	10/800	ISA7-0459-AGG
553026	DTR 25kV Polymer Strain	DTR	Korea	25kV	70 Tongue & Clevis	693	6	442	Grey	1.3kg	10/600	ISB7-0693-AGH
553034	DTR 35kV Polymer Strain	DTR	Korea	35kV	70 Tongue & Clevis	927	8	536	Grey	1.4kg	10/600	ISC7-0927-AGH
553603	DTR 46kV Polymer Strain	DTR	Korea	46kV	70 Tongue & Clevis	1070	8	644	Grey	1.8kg	8/224	ISC9-1070-CAB



69kV POLYMER STRAIN INSULATORS

Part Number	Description	Brand	Origin	Rated kN	End Fittings	Creepage (mm)	Sheds	Length (mm)	Colour	Weight	Box/ Pallet	Drawing
69kV Polymer Strains (IEC 61109)												
553700	DTR 69kV Polymer Strain	DTR	Korea	69kV	70 Tongue & Clevis	2205	13	864	Grey	2.9kg	1/144	ISD7-2205-BAB
553379	DTR 69kV L011745 Strain	DTR	Korea	69kV	120 Ball & Socket	2070	19	800	Grey	4.4kg	1	SCGL019-A6800
553395	DTR 69kV L011746Y Strain	DTR	Korea	69kV	120 Y Clevis & Eye	2070	19	821	Grey	4.9kg	1	SCGL019-A2800
553387	DTR 69kV L011746 Strain	DTR	Korea	69kV	120 Ball & Socket	2449	17	859	Grey	5.4kg	1	SCVL017-A6800
553409	DTR 69kV L066096 Strain	DTR	Korea	69kV	160 Eye & Eye	1658	15	855	Grey	4.6kg	1	SEHL015-B1100

DTR HV SUSPENSION Strains

Ball & Socket Suspension Insulator



Y Clevis Suspension Insulator



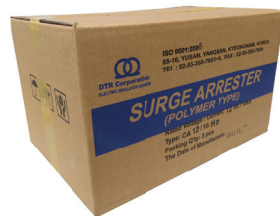
Eye Eye Strain Insulator

POLYMERIC SUSPENSION INSULATORS FOR TRANSMISSION

Part Number	Description	Brand	Origin	Rated	Creep (mm)	Strength (kN)	Length (mm)	Sheds	Reference	Colour	Weight	Drawing
110kV Suspension Strains												
553417	Ball & Socket	DTR	Korea	115kV	3754	120	1232	35	L011760	Grey	7.1kg	SCGL035-A6801
553425	Y Clevis	DTR	Korea	115kV	3754	120	1253	35	L011760Y	Grey	7.6kg	SCGL035-A2801
553433	Ball & Socket	DTR	Korea	115kV	3893	120	1214	27	L011761	Grey	8.8kg	SCGL027-A6801
553441	Ball & Socket	DTR	Korea	115kV	3754	210	1241	35	L011770	Grey	8.0kg	SFGL035-B6801
553468	Y Clevis	DTR	Korea	115kV	3754	210	1262	35	L011770Y	Grey	8.5kg	SFVL035-B2801
553476	Ball & Socket	DTR	Korea	115kV	3893	210	1226	27	L011771	Grey	9.0kg	SFVL027-B6801
220kV Suspension Strains												
553484	Ball & Socket	DTR	Korea	230kV	7121	120	2096	67	L011762	Grey	11.9kg	SCGL067-A6811
553492	Ball & Socket	DTR	Korea	230kV	7606	120	2137	53	L011763	Grey	13.0kg	SCVL053-A6811
553506	Ball & Socket	DTR	Korea	230kV	7121	210	2105	67	L011772	Grey	12.4kg	SFGL067-B6811
553514	Ball & Socket	DTR	Korea	230kV	7607	210	2149	53	L011773	Grey	14.5kg	SCGL053-B6811
400kV Suspension Strains												
553522	Ball & Socket	DTR	Korea	500kV	12804	120	3554	121	L011764	Grey	18.5kg	SCGL121-A6813
553530	Ball & Socket	DTR	Korea	500kV	13301	120	3557	93	L011765	Grey	21.7kg	SCVL093-A6813
553549	Ball & Socket	DTR	Korea	500kV	12804	210	3563	121	L011774	Grey	19.5kg	SFGL121-B6813
553557	Ball & Socket	DTR	Korea	500kV	13301	210	3569	93	L011775	Grey	22.7kg	SFVL093-B6813



DTR 12kV Class 1 (CA12/10.HD)



Made in Korea



32mm Top



Nema Bracket



Base Fitting

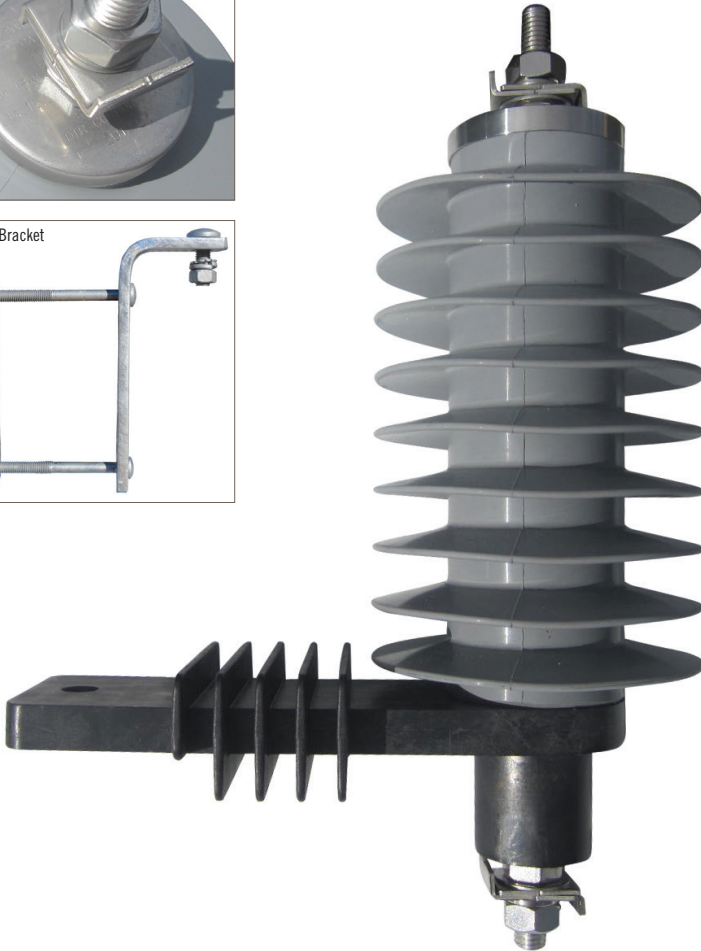
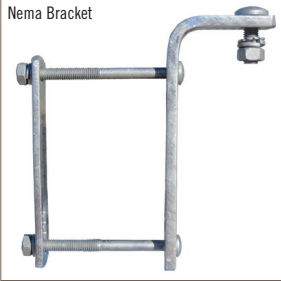
12kV POLYMER SURGE ARRESTERS (IEC 60099-4)

Part Number	Description	Brand	Origin	Rated Current	MCOV	Top Fitting	Bracket	Colour	Box/ Pallet	Drawing
12kV Surge Arresters										
553042	DTR 12kV 10kA Class 1	DTR	Korea	12kV 10kA	10.2kV	32mm	Nema	Grey	3/168	CA12/10.HD
553077	DTR 12kV 10kA Class 1	DTR	Korea	12kV 10kA	10.2kV	100mm	Nema	Grey	3/168	CA12/10.HD100
553204	DTR 12kV 10kA Class 2	DTR	Korea	12kV 10kA	9.6kV	32mm	Nema	Grey	3/168	CA12/10.2D

Top Fitting



Nema Bracket



DTR 15kV (CA15/10.2D)

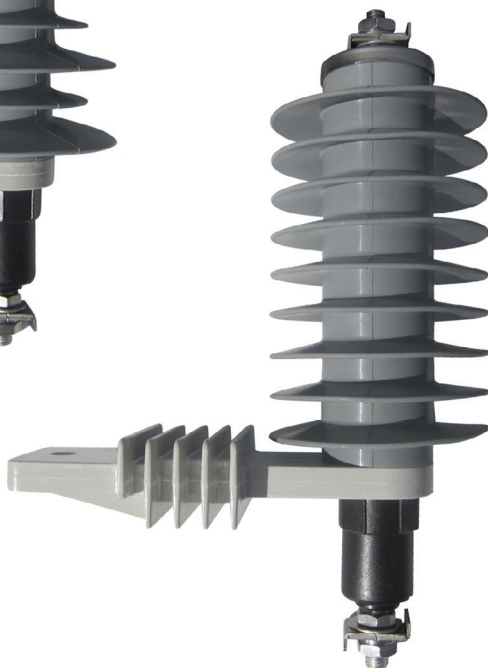
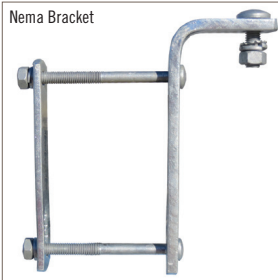
15kV POLYMER SURGE ARRESTER (IEC 60099-4)

Part Number	Description	Brand	Origin	Rated Current	MCOV	Top Fitting	Bracket Colour	Box/ Pallet	Drawing
15kV Surge Arrester									
553646	DTR 15kV 10kA Class 2	DTR	Korea	15kV 10kA	12.0kV	32mm	Nema Grey	3/168	CA15/10.2D

DTR 18kV Alt Sheds (CA18/10.1D)



Nema Bracket

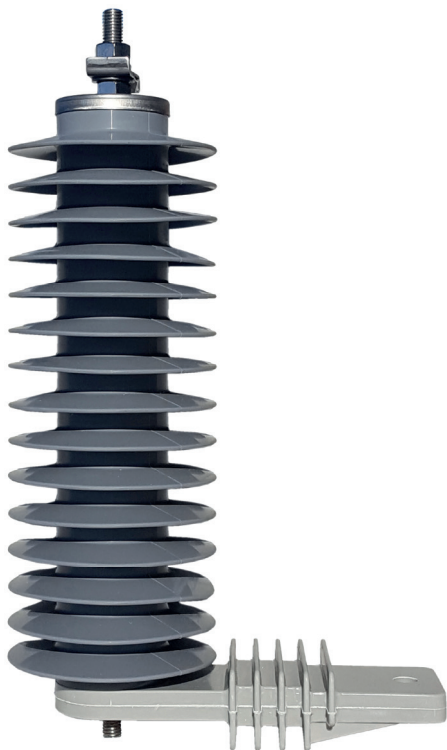


DTR 18kV (CA18/10.2D)

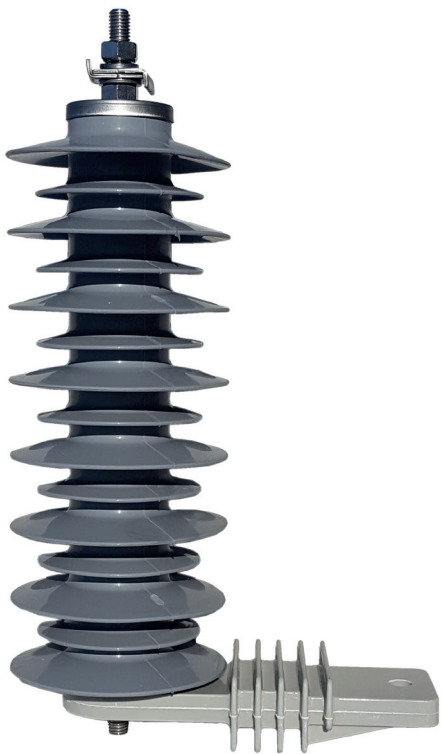
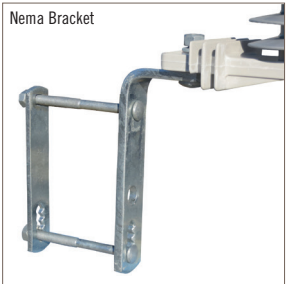
18kV POLYMER SURGE ARRESTERS (IEC 60099-4)

Part Number	Description	Brand	Origin	Rated Current	MCOV	Top Fitting	Bracket Colour	Box/ Pallet	Drawing
18kV Surge Arresters									
553050	DTR 18kV 10kA Class 1 (Alt Sheds)	DTR	Korea	18kV 10kA	15.3kV	32mm	Nema Grey	3/168	CA18/10.1D
553565	DTR 18kV 10kA Class 2	DTR	Korea	18kV 10kA	15.3kV	32mm	Nema Grey	3/168	CA18/10.2D

DTR 18kV Alt Sheds (CA18/10.1D)



Nema Bracket



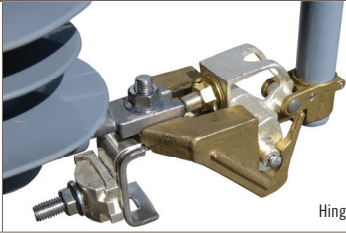
DTR 18kV (CA18/10.2D)

33kV POLYMER SURGE ARRESTERS (IEC 60099-4)

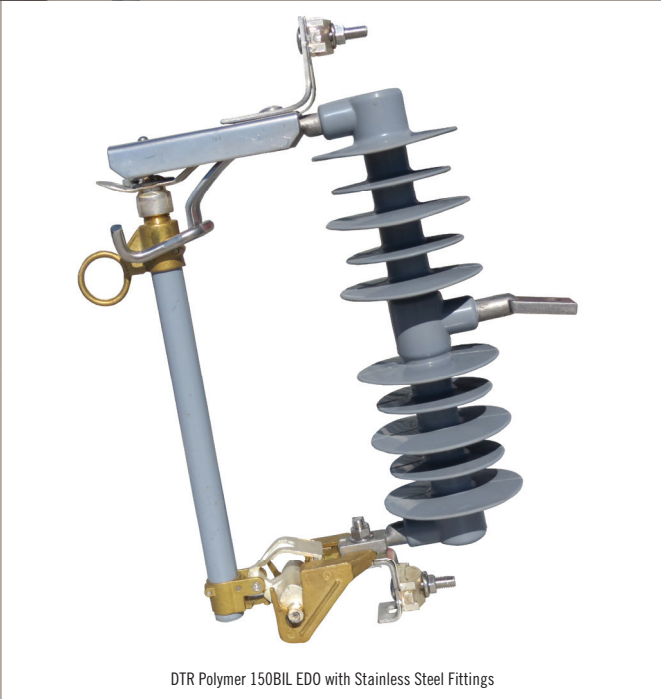
Part Number	Description	Brand	Origin	Rated Current	MC0V	Top Fitting	Bracket Colour	Box/ Pallet	Drawing
18kV Surge Arresters									
554227	DTR 33kV 10kA Class 1	DTR	Korea	33kV	10kA	28.05kV	32mm Nema	Grey	1/60 CA33/10.1D
554235	DTR 33kV 10kA Class 2	DTR	Korea	33kV	10kA	26.4kV	32mm Nema	Grey	1/60 CA33/10.2D



Stainless Steel



Hinge



DTR Polymer 150BIL EDO with Stainless Steel Fittings



DTR EDO Coupling Insulator

Coupling Insulator Top View



POLYMER EDO DROPOUTS											
Part Number	Description	Brand	Origin	Rated	BIL	Current	Creepage	Length	Colour	Weight	Box/ Drawing Pallet
554448	DTR 15kV Polymer EDO	DTR	Korea	15kV	125kV	100A	370mm	292.5mm	Grey	4.6kg	1/100 CSNL15-BP1-100D
554375	DTR 27kV Polymer EDO	DTR	Korea	27kV	150kV	100A	580mm	383.5mm	Grey	5.6kg	1/86 CSNL27-BP1-100D
554413	DTR 36kV Polymer EDO	DTR	Korea	36kV	175kV	100A	1080mm	513.5mm	Grey	6.4kg	1/44 CSNL36-BP1-100D
EDO Coupling Insulator											
Part Number	Description	Brand	Origin	Rated	kN	Leakage	Length	Colour	Weight	Box/ Pallet	Drawing
553098	EDO Coupling Insulator	DTR	Korea	15kV	9.8	450mm	265mm	Grey	1.2kg	20/600	CI265-120AL