



This updated catalogue summarises the product range that New Zealand Insulators is offering ex-stock in 2012.

You'll find a wider range of NZI line posts including clamp top options, our all-new range of AX spindles & clevis thimbles, DTR polymer insulators from Korea, a selected range of Avon line hardware and a deeper offering of Bussmann fuselinks. You won't find parallel-imported or brown-glazed porcelain – they're being phased out.

We've organised this 2012 edition by manufacturer brand rather than by section – with the colour of the page signifying the relevant brand.

This catalogue is available as a PDF both in its entirety, and by brand – online at nzinsulators.co.nz. PDF drawings for many of the products can also be downloaded.

As our product range continues to evolve during the year, we'll use an 'NZI Network Update' in the (bi-monthly) ElectroLink magazine to update you on developments.

We might be in our 88th year, but NZI is having to work to compete and to survive. We need and appreciate every purchase order you choose to place with us.

Greg Howell

General Manager

New Zealand Insulators Limited

Mobile 0275-605605

Email greg.howell@nzinsulators.co.nz

NZI BRAND made in Temuka

NZI Reels, Spike & LV Insulators	2-3
NZI 11kV Insulators	4-7
NZI 22kV Insulators	8-9
NZI 33kV Insulators	10-13
NZI Guy & Fence Strains	16
NZI Standoff Insulators	17
NZI Insulator Bundles	18
NZI Station Posts	27
NZI Disconnects	42
NZI Pole Mounted Cutouts	44-45
NZI Fuseholders	46
NZI J-Type Fuse Carriers	56-57
NZI Busbar Support	64
NZI DMC Standoffs	64
NZI Fastlug Connectors	64

AX BRAND made in China/UK for NZI

AX Spindles	14-15
AX Clevis Thimbles	20
CECEC Glass Discs	28

AVON INDUSTRIES made in Whangarei

Avon Line Hardware	19
Avon HDG & Stainless Earth Rods	38

DTR ELECTRIC made in Korea

DTR Deadend Strains	21
DTR Line Posts	22-24
DTR Surge Arresters	25
DTR Station Posts	26
DTR Transmission (Suspension)	29
DTR Standoff Insulator	30
DTR Polymer EDO Cutout	31

NGK STANGER made in Australia

NGK-S EDO & HVI Cutouts	32-33
NGK-S ABS & SF6 Switches	34-35
NGK-S LVI & LVFI Links	36
NGK-S FSD Disconnects	43

FULTON INDUSTRIES made in Australia

Fulton Clamps & Connectors	37
Fulton Copper-Clad Earth Rods	39

EFEN made in Germany

Efen DIN Fuse Disconnects	40-41
---------------------------	-------

COOPER BUSSMANN made in India

Bussmann HRC Fuselinks	47-61
------------------------	-------

SOFAMEL made in Spain

Sofamel Safety Equipment	62-63
--------------------------	-------



220



210



205



220 Top View



210 Top View



205 Top View



103 Spike



80 or 42 Reels Per Carton

LOW VOLTAGE PORCELAIN REELS & SPIKE

Part Number	Description	Brand	Origin	Groove	Design Loading	Rated	Colour	Fixing	Unit	Weight	Box Qty	Drawing
Reels												
109061	NZI 220 Reel	NZI	NZ	19mm	5.5kN	650V	Grey	17mm Diameter	Each	295g	80	S1332
109207	NZI 210 Reel	NZI	NZ	10mm	6kN	650V	Grey	17.5mm Diameter	Each	220g	80	S1331
109010	NZI 205 Reel	NZI	NZ	18mm	10kN	3.3kV	Grey	17.5mm Diameter	Each	540g	42	S1330
Spike												
100501	NZI 103 Spike	NZI	NZ	16mm Hole	4kN		Grey	Coach Screw	Each	325g	50	D267-0502



LOW VOLTAGE PORCELAIN INSULATORS

Part Number	Description	Brand	Origin	Groove	Top	Line Voltage	Colour	Thread	Unit	Weight	Box/Pallet	Drawing
LV Insulators												
102040	NZI 510 (Round Top)	NZI	NZ	26mm	Tie Top	0.4kV-3kV	Grey	5/8" Cordeau	Each	580g	30/1200	S1003
102067	NZI 511 (Square Top)	NZI	NZ	32mm	Tie Top	0.4kV-3kV	Grey	5/8" Cordeau	Each	600g	30/900	S1656
Part Number	Description	Brand	Origin	Length	Strength	Diameter	Head	Thread	Unit	Weight	Box Qty	Drawing
Spindle for 510/511												
540358	5/8 Cordeau Spindle	AX	China	118/127mm	3.3kN	Galv Steel	Steel	5/8" Cordeau	Each	485g	30	D374-2009
Part Number	Description	Brand	Origin			Detail	OD	Internal Diameter	Unit	Weight	Pack Qty	
Washer for 510/511												
540234	Leather Washer	AX	NZ			Oiled Leather	23mm	5/8" (15.9mm)	Each	0.1gm	90*	

* Washers – pack quantity previously 100, now 90

NZI 11kV PIN Insulators (Clamp Top)



1132T



Thread



R23



6/Box

11kV PORCELAIN PIN INSULATOR (CLAMP TOP)

Part Number	Description	Brand	Origin	Creepage	Top	Clamp	Colour	Thread	Unit	Weight	Box Qty	Drawing
11kV Pin Insulator												
104175	NZI 1132T	NZI	NZ	250mm	Clamp Top	SGI/Aluminium	Grey	BS Small Steel Head	Each	3.6kg	6	D351-0502
Part Number	Description	Brand	Origin	Length	Strength	Diameter	Head	Thread	Unit	Weight	Box Qty	Drawing
Spindle for 1132T												
540528	AX R23 Spindle	AX	UK	170/130mm	10kN	M18	Steel	BS Small Steel Head	Each	1.1kg	6	D374-2027



11kV PORCELAIN PIN INSULATORS (TIE TOP)

Part Number	Description	Brand	Origin	Creepage	Top	Groove	Colour	Thread	Unit	Weight	Box/Pallet	Drawing
11kV Pin Insulators												
103160	NZI 1130W (26mm Groove)	NZI	NZ	250mm	Tie Top	26mm	Grey	1 Inch SLHT	Each	1.5kg	12/288	M1022-14
104507	NZI 1130W (32mm Groove)	NZI	NZ	250mm	Tie Top	32mm	Grey	1 Inch SLHT	Each	1.5kg	12/288	M1022-17
103608	NZI 821*	NZI	NZ	185mm	Tie Top	23mm	Grey*	5/8" Cordeau	Each	930g	18	S1310
15kV Pin Insulator												
104574	NZI 1540W	NZI	NZ	300mm	Tie Top	32mm	Grey	1 & 3/8"	Each	2.0kg	6/144	S1071-24
Part Number	Description	Brand	Origin	Length	Strength	Diameter	Head	Thread	Unit	Weight	Box Qty	Drawing
Spindles for 1130W												
536164	AX Nema 1" Nylon Spindle	AX	China	152/140mm	6kN	M20	Nylon	1 Inch SLHT	Each	1.0kg	12	D374-2134
536326	AX Nema 1" Lead Spindle	AX	China	152/146mm	6kN	M20	Lead	1 Inch SLHT	Each	1.1kg	12	D374-2118
Spindle for 821												
540358	AX 141B 5/8 Cordeau Spindle	AX	China	118/127mm	3.3kN	M16	Steel	5/8" Cordeau	Each	485g	30	D374-2009
Spindle for 1540												
540455	AX 140B1 Spindle	AX	China	171/134mm	10kN	M20	Lead	1 & 3/8"	Each	1.6kg	12	D374-2008

* 821 = some brown still in stock, phased changeover to grey

NZI 11kV LINE POST Insulators (Clamp Top)



11kV Clamp Top Line Post – includes Cable Clamp



Clamp



Clamp Side View



Cap, made in Auckland



Stud Hardware

11kV PORCELAIN LINE POST INSULATOR (CLAMP TOP)

Part Number	Description	Brand	Origin	Creepage	Top	Clamp	Strength	Colour	Unit	Weight	Box/ Pallet	Drawing
11kV Line Post												
464589	NZI 11kV Class 2 Line Post	NZI	NZ	320mm	Clamp Top	SGI/ Aluminium	10kN	Grey	Each	7.0kg	3/84	D724-0526





11kV Class 2

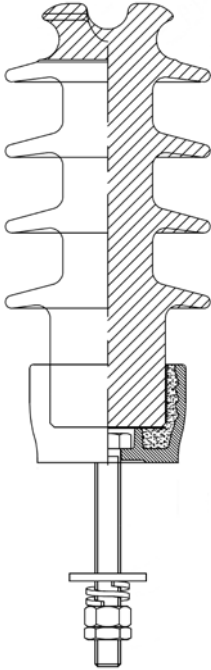
12kV Ultra Premium

1/Box (464314)

11kV PORCELAIN LINE POST INSULATORS (TIE TOP)

Part Number	Description	Brand	Origin	Creepage	Top	Groove	Strength	Colour	Unit	Weight	Box/Pallet	Drawing
11kV Line Post												
460818	NZI 11kV Class 2 Line Post	NZI	NZ	285mm	Tie Top	32mm	10kN	Grey	Each	4.9kg	3/144	D632-0551
12kV Ultra Premium Line Post												
464314	NZI 12kV Class 3 Line Post	NZI	NZ	420mm	Tie Top	32mm	17.5kN	Grey	Each	8.4kg	1/40	D632-0564

NZI 22kV LINE POST Insulators (Tie Top)



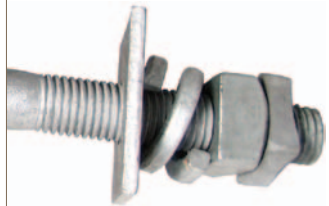
22kV Class 2 – March Release



22kV Ultra Premium



Groove



Stud Hardware



1/Box

22kV PORCELAIN LINE POST INSULATORS (TIE TOP)

Part Number	Description	Brand	Origin	Creepage	Top	Groove	Strength	Colour	Unit	Weight	Box/Pallet	Drawing
22kV Line Post*												
464619	NZI 22kV Class 2 Line Post*	NZI	NZ	490mm	Tie Top	32mm	10kN	Grey	Each	9.0kg	1/40	D632-0573
22kV Ultra Premium Line Post												
464368	NZI 22kV Class 4 Line Post	NZI	NZ	630mm	Tie Top	32mm	17.5kN	Grey	Each	12.4kg	1/40	D632-0563

* Planned release date – March 2012





ALP22/450



Groove



Thread



Pattern C

22kV PORCELAIN PIN INSULATOR (TIE TOP)

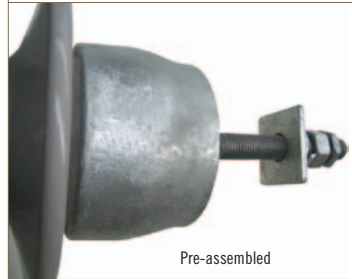
Part Number	Description	Brand	Origin	Creepage	Top	Groove	Colour	Thread	Unit	Weight	Box/Pallet	Drawing
22kV Pin Insulator												
106941	NZI ALP22/450	NZI	NZ	450mm	Tie Top	32mm	Grey	Pattern C	Each	3.6kg	6/120	S2466-1
Part Number	Description	Brand	Origin	Length	Strength	Diameter	Head	Thread	Unit	Weight	Box Qty	Drawing
Spindles for ALP22/450												
538213	AX M20 Pattern C Spindle (20mm)	AX	China	200/165mm	10kN	M20	Lead	Pattern C	Each	2.2kg	6	D374-2084
538205	AX M24 Pattern C Spindle (24mm)	AX	China	200/165mm	11kN	M24	Lead	Pattern C	Each	2.4kg	6	D374-2085



33kV Clamp Top Line Post – includes Cable Clamp



Clamp Components



Pre-assembled



1/Box

33kV PORCELAIN LINE POST INSULATOR (CLAMP TOP)

Part Number	Description	Brand	Origin	Creepage Top	Clamp	Strength	Colour	Unit	Weight	Box/Pallet	Drawing
	33kV Line Post										
464597	NZI 33kV Class 3 Line Post	NZI	NZ	1020mm	Clamp Top	SGI/ Aluminium	13kN	Grey	Each	15.5kg	1/30 D724-0524





33kV (32mm Groove)



33kV (40mm Groove)



36kV Ultra Premium



44/780*



32mm Groove



1/Box

33kV PORCELAIN LINE POST INSULATORS (TIE TOP)

Part Number	Description	Brand	Origin	Creepage	Top	Groove	Strength	Colour	Unit	Weight	Box/Pallet	Drawing
33kV Line Posts												
464570	NZI 33kV Class 3 32mm Groove	NZI	NZ	915mm	Tie Top	32mm	17.5kN	Grey	Each	15.4kg	1/40	D632-0570
464562	NZI 33kV Class 3 40mm Groove	NZI	NZ	915mm	Tie Top	40mm	17.5kN	Grey	Each	16.1kg	1/40	D632-0571
36kV Ultra Premium Line Post												
464376	NZI 36kV Class 4 Line Post	NZI	NZ	955mm	Tie Top	32mm	13kN	Grey	Each	17.4kg	1/40	D632-0562
44kV Line Post*												
461717	NZI 44kV 44/780 Class 2 Line Post*	NZI	NZ	780mm	Tie Top	38mm	10kN	Grey	Each	15.0kg	1/40	D632-0537

* End of Line = unlikely to be stocked beyond Dec 2012

NZI 33kV PIN Insulators (Clamp Top)

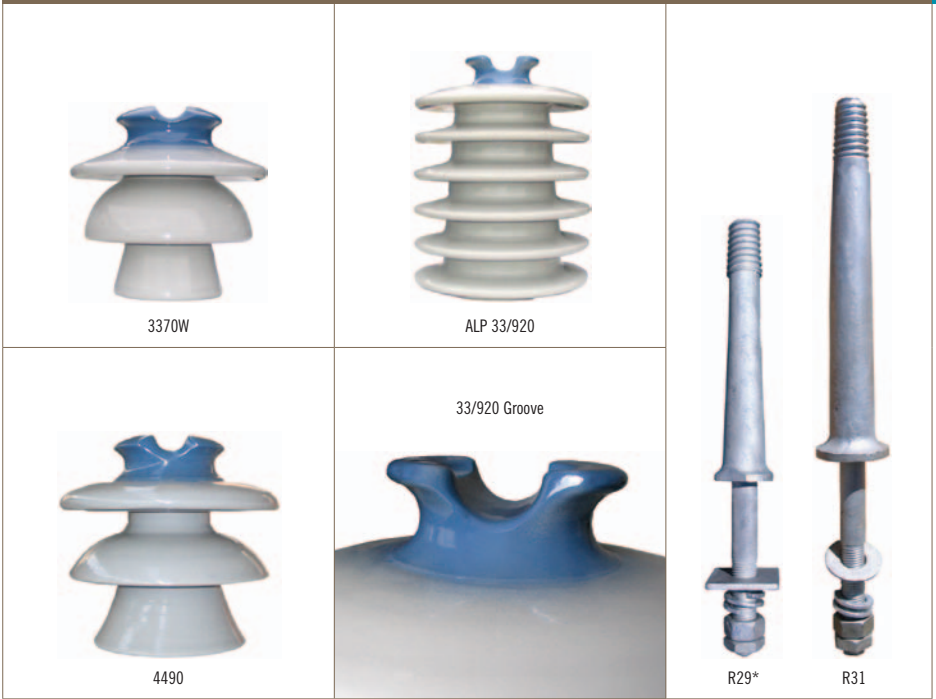


33kV PORCELAIN PIN INSULATORS (CLAMP TOP)

Part Number	Description	Brand	Origin	Creepage	Top	Clamp	Colour	Thread	Unit	Weight	Box/Pallet	Drawing
33kV Pin Insulator												
112550	NZI 3372	NZI	NZ	510mm	Clamp Top	SGI/ Aluminium	Grey	BS Large Steel Head	Each	8.2kg	1/32	D347-0504
44kV Pin Insulator												
111414	NZI 4492	NZI	NZ	635mm	Clamp Top	SGI/ Aluminium	Grey	BS Large Steel Head	Each	14.1kg	1/32	D341-0506
Part Number	Description	Brand	Origin	Length	Strength	Diameter	Head	Thread	Unit	Weight	Box Qty	Drawing
Spindle fits both Insulators												
540463	AX R31 Spindle	AX	China	305/178mm	10kN		Steel	BS Large Steel Head	Each	2.9kg	6	374-2023
Shorter Spindle for 3372 only*												
540706	AX R29 Spindle*	AX	UK	230/152mm	10kN		Steel	BS Large Steel Head	Each	1.9kg	6	374-2110

* End of Line = unlikely to be stocked beyond Dec 2012





33kV PORCELAIN PIN INSULATORS (TIE TOP)

Part Number	Description	Brand	Origin	Creepage	Top	Groove	Colour	Thread	Unit	Weight	Box/Pallet	Drawing
33kV Pin Insulators												
112526	NZI 3370W	NZI	NZ	500mm	Tie Top	32mm	Grey	BS Large Steel Head	Each	5.2kg	3/96	D327-0503
115029	NZI ALP33/920	NZI	NZ	920mm	Tie Top	32mm	Grey	BS Large Steel Head	Each	16.2kg	1/28	D718-0503
44kV Pin Insulators												
111376	NZI 4490	NZI	NZ	665mm	Tie Top	38mm	Grey	BS Large Steel Head	Each	9.5kg	3/45	D343-0504
Part Number	Description	Brand	Origin	Length	Strength	Diameter	Head	Thread	Unit	Weight	Box Qty	Drawing
Spindle fits all 3 Insulators												
540463	AX R31 Spindle	AX	China	305/178mm	10kN	M22	Steel	BS Large Steel Head	Each	2.9kg	6	374-2023
Shorter Spindle for 3370 only*												
540706	AX R29 Spindle*	AX	China	230/152mm	10kN	M22	Steel	BS Large Steel Head	Each	1.9kg	6	374-2110

* End of Line = unlikely to be stocked beyond Dec 2012



5/8" Cordeau



R23



NEMA Nylon



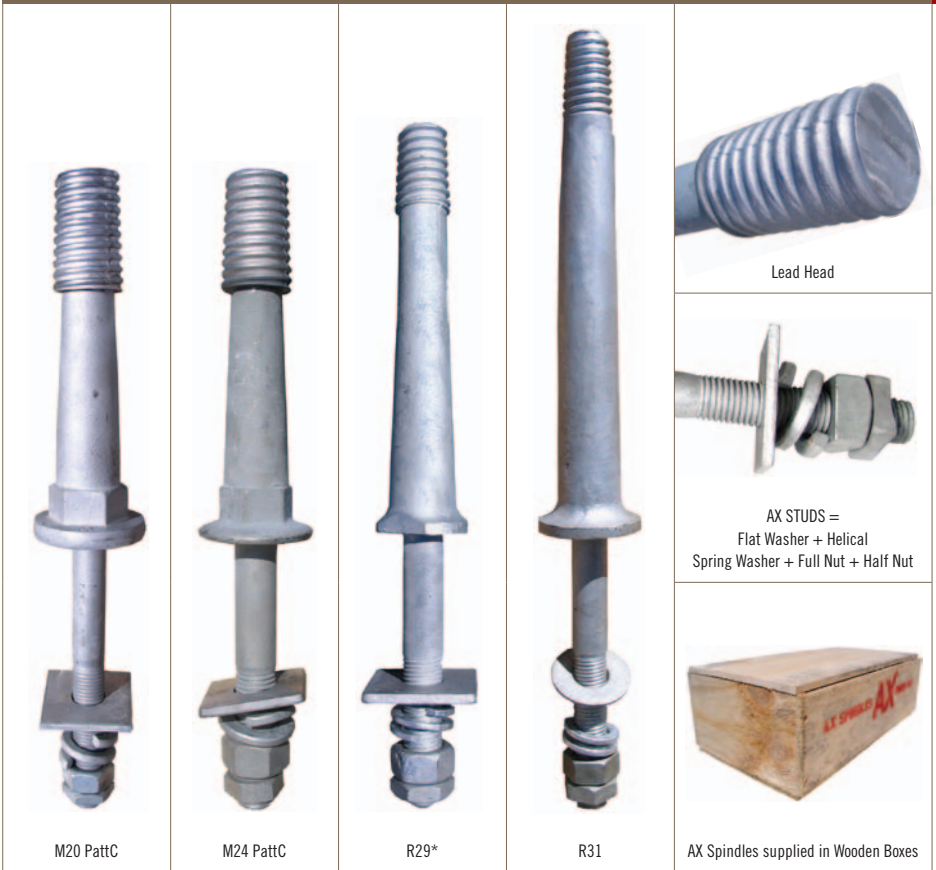
NEMA Lead



140B1

GALVANISED STEEL SPINDLES FOR PIN-TYPE INSULATORS

Part Number	Description	Brand	Origin	Length	Diameter	Strength	Head	Thread	Unit	Weight	Box Qty	Drawing
Spindle for 510, 511 & 821												
540358	AX 141B 5/8 Cordeau Steel Head Spindle	AX	China	118/127mm	M16	3.3kN	Steel	5/8" Cordeau	Each	485kg	30	D374-2009
Spindle for 1132T												
540528	AX R23 Steel Head Spindle	AX	UK	170/130mm	M18	10kN	Steel	BS Small Steel Head	Each	1.1kg	6	D374-2027
Spindles for 1130W												
536164	AX Nema 1" Nylon Head	AX	China	152/140mm	M20	6kN	Nylon	1 Inch SLHT	Each	1.0kg	12	D374-2134
536326	AX Nema 1" Lead Head	AX	China	152/146mm	M20	6kN	Lead	1 Inch SLHT	Each	1.1kg	12	D374-2118
Spindle for 1540												
540455	AX 140B1 Lead Head Spindle	AX	China	171/134mm	M20	10kN	Lead	1 & 3/8"	Each	1.6kg	12	D374-2008



M20 PattC

M24 PattC

R29*

R31

Lead Head

AX STUDS =
Flat Washer + Helical
Spring Washer + Full Nut + Half Nut

AX Spindles supplied in Wooden Boxes

GALVANISED STEEL SPINDLES FOR PIN-TYPE INSULATORS

Part Number	Description	Brand	Origin	Length	Diameter	Strength	Head	Thread	Unit	Weight	Box Qty	Drawing
Spindles for ALP22/450												
538213	AX M20 Pattern C Lead Head	AX	China	200/165mm	M20	10kN	Lead	Pattern C	Each	2.2kg	6	D374-2084
538205	AX M24 Pattern C Lead Head	AX	China	200/165mm	M24	11kN	Lead	Pattern C	Each	2.4kg	6	D374-2085
Shorter Spindle (option) for 3370W & 3372*												
540706	AX R29 Steel Head Spindle*	AX	UK	230/152mm	M22	10kN	Steel	BS Large Steel Head	Each	1.9kg	6	374-2110
Spindle for 3370W, 33/920, 4490, 3372 & 4492												
540463	AX R31 Steel Head Spindle	AX	China	305/178mm	M22	10kN	Steel	BS Large Steel Head	Each	2.9kg	6	374-2023

* End of Line = unlikely to be stocked beyond Dec 2012



GY2 Guy Strain



GY3 Guy Strain



107 Fence Strainer



GY3 Side View



GY3 Top View

PORCELAIN GUYS STRAINS & FENCE STRAINER

Part Number	Description	Brand	Origin	Height	Wet Flashover	Strength	Colour	Unit	Weight	Box/Pallet	Drawing
GY2 Guy Strain											
108197	NZI GY2 15kV Guy Strain	NZI	NZ	146mm	15kV	71kN with 19/2 Staywire	Grey	Each	1.2kg	18/1152	S2289
GY3 Guy Strain											
108162	NZI GY3 20kV Guy Strain	NZI	NZ	216mm	20kV	222kN with 19/2.75 Staywire	Grey	Each	3.8kg	4/192	S2289
Fence Strainer											
108014	NZI 107 Fence Strainer	NZI	NZ	57mm	4kV		Clear Glaze	Each	135g	280	M1515



12-36kV PORCELAIN STANDOFF INSULATORS

Part Number	Description	Brand	Origin	Creepage	Length	Colour	Strength	End Fittings	Unit	Weight	Box Qty	Drawing
599263	12kV T-Insert Standoff Insulator	NZI	NZ	480mm	235mm	Grey	3.5kN	T Insert	Each	6.0kg	6	D412-0504
598291	12kV Standoff Switch Insulator	NZI	NZ	445mm	235mm	Grey	4.0kN	Cemented Caps	Each	5.9kg	3	D412-0529
598305	22kV Standoff Switch Insulator	NZI	NZ	590mm	300mm	Grey	3.0kN	Cemented Caps	Each	5.8kg	3	D412-0531
598313	36kV Standoff Switch Insulator	NZI	NZ	880mm	406mm	Grey	2.0kN	Cemented Caps	Each	9.0kg	3	D412-0527



210 U-Shackle Bundle



205 U-Shackle Bundle



210 Shackle-Strap Bundle



205 Shackle-Strap Bundle



510 + Cordeau Spindle + Washer



1130W + Nema Nylon Spindle



Eye Bolt + 15kV Deadend + Aluminium Clevis



Eye Bolt + 15kV Deadend + Steel Clevis

REEL, 510/511, 1130 & 15KV DEADEND ASSEMBLED BUNDLES

Part Number	Description	Assembled?	Refer Pages	Unit	Weight	Box Qty
Reel & U-Shackle Bundles						
102121	NZI 210 Reel + Avon AA23001 Small U Shackle + M12 110 Bolt	Assembled	2, 19	Bundle	650g	20
102156	NZI 205 Reel + Avon AA23003 E/Large U Shackle + M12 110 Bolt	Assembled	2, 19	Bundle	1.3kg	10
Reel & Shackle Strap Bundles						
102148	NZI 210 Reel + 2 x Avon AA20001 7" Shackle Strap + 2 x M12 110 Bolt	Assembled	2, 19	Bundle	750g	20
102180	NZI 205 Reel + 2 x Avon AA20001 7" Shackle Strap + 2 x M12 110 Bolt	Assembled	2, 19	Bundle	1.1kg	10
LV Insulator & Spindle & Washer Bundles						
102164	NZI 510 Insulator + AX 5/8 Cordeau Spindle + AX Leather Washer	Assembled	3	Bundle	1.1kg	12
102172	NZI 511 Insulator + AX 5/8 Cordeau Spindle + AX Leather Washer	Assembled	3	Bundle	1.1kg	12
1130W 11kV Pin Insulator & Nema Nylon Spindle Bundles						
103837	NZI 1130W 26mm Insulator + AX Nema Nylon Spindle	Assembled	5	Bundle	2.5kg	6
103934	NZI 1130W 32mm Insulator + AX Nema Nylon Spindle	Assembled	5	Bundle	2.5kg	6
15kV Deadend Strain & Clevis Thimble & Eye Bolt Bundles						
553336	DTR 15kV Deadend + AX Aluminium Clevis + Avon M16 200 Eye Bolt	Assembled	19, 20, 21	Bundle	2.1kg	10
553344	DTR 15kV Deadend + AX Steel Clevis + Avon M16 200 Eye Bolt	Assembled	19, 20, 21	Bundle	2.3kg	10



AVON HDG STEEL LINE HARDWARE

Part Number	Description	Brand	Origin	Length	Width	Thick	Holes	Hot Dip Galv	Unit	Weight	Outer Qty	Drawing
Shackle Straps												
537004	Avon Shackle Strap 7"	Avon	NZ	180mm	32mm	3mm	14mm	To AS/NZS 4680:2006	Each	140g	100	AA20001
537012	Avon Shackle Strap #11	Avon	NZ	170mm	30mm	2mm	14mm	To AS/NZS 4680:2006	Each	85g	200	AA20009
537020	Avon Shackle Strap #8 Offset	Avon	NZ	180mm	32mm	3mm	18mm	To AS/NZS 4680:2006	Each	130g	100	AA20011
U Shackles												
537039	Avon 210 U Shackle Small	Avon	NZ	85mm	32mm	3mm	14mm	To AS/NZS 4680:2006	Each	160g	100	AA23001
537047	Avon 205 U Shackle Large	Avon	NZ	105mm	32mm	3mm	14mm	To AS/NZS 4680:2006	Each	210g	50	AA23002
537063	Avon 320 U Shackle Extra Large	Avon	NZ	132mm	40mm	5mm	14mm	To AS/NZS 4680:2006	Each	500g	30	AA23003
Rolled-Thread M16 Eye Bolts												
537144	Avon 200x20mm Eye Bolt c/w M16 Nut	Avon	NZ	200mm	50mm	14.7mm		To AS/NZS 4680:2006	Each	490g	20	AA02002
537152	Avon 200x32mm Eye Bolt c/w M16 Nut	Avon	NZ	200mm	62mm	14.7mm		To AS/NZS 4680:2006	Each	500g	20	AA02011
537160	Avon 250x20mm Eye Bolt c/w M16 Nut	Avon	NZ	250mm	50mm	14.7mm		To AS/NZS 4680:2006	Each	620g	20	AA02004
Crossarm Braces												
537179	Avon 660x30mm Crossarm Brace	Avon	NZ	660mm	30mm	5mm	14mm	To AS/NZS 4680:2006	Each	780g	20	AA13010
537187	Avon 763x30mm Crossarm Brace	Avon	NZ	763mm	30mm	5mm	14mm	To AS/NZS 4680:2006	Each	900g	20	AA13013
Crucifix Hardware												
537055	Avon 11kV Crucifix Bracket	Avon	NZ	920mm	340mm	6mm	14mm	To AS/NZS 4680:2006	Each	4.8kg	5	AA18206

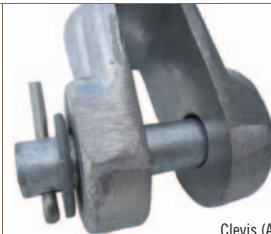


Aluminium Clevis

Steel Clevis



70kN (Al)



Clevis (Al)



470g (Aluminium)



70kN (Steel)



Clevis (Steel)



650g (Steel)

CLEVIS THIMBLES FOR DEADEND STRAINS

Part Number	Description	Brand	Origin	Strength	Length	Spacing	Includes	Unit	Weight	Box Qty	Drawing
For Aluminium Conductor											
536342	AX Aluminium Clevis Thimble	AX	China	70kN	115mm	18.5mm	Stainless Cotter Pin	Each	470g	30	TC-XL-7
For Copper Conductor											
536393	AX Galvanised Steel Clevis Thimble	AX	China	70kN	146mm	25mm	Stainless Cotter Pin	Each	650g	30	TC-XM-7



70kN DTR Polymer Deadend Strains



15kV



25kV



35kV



Tongue



Clevis

DTR POLYMERIC 'DEADEND' STRAIN INSULATORS

Part Number	Description	Brand	Origin	Volts	kN	End Fittings	Creepage	Colour	Standard	Weight	Box/Pallet	Drawing
15kV Rated Voltage												
553018	DTR 15kV Polymer Deadend Insulator	DTR	Korea	15kV	70	Tongue & Clevis	459	Grey	IEC 61109	1.0kg	10/640	ISA7-0459-AGH
25kV Rated Voltage												
553026	DTR 25kV Polymer Deadend Insulator	DTR	Korea	25kV	70	Tongue & Clevis	693	Grey	IEC 61109	1.2kg	10/540	ISB7-0693-AGH
35kV Rated Voltage												
553034	DTR 35kV Polymer Deadend Insulator	DTR	Korea	35kV	70	Tongue & Clevis	927	Grey	IEC 61109	1.3kg	10/540	ISC7-0927-AGH



15kV Vertical Clamp Line Post (553093)



Vertical Clamp



Horizontal Gain Base



Cap

DTR POLYMER LINE POST INSULATORS FOR 11kV

Part Number	Description	Brand	Origin	Volts	kN	Creep	Line Fitting	Colour	Standard	Weight	Box/Pallet	Drawing
Vertical Line Posts for 11kV												
553093	DTR 15kV Vertical Line Post	DTR	Korea	15kV	12.5	312	Vert Clamp	Grey	IEC 61952	4.4kg	6/120	DTR-LPV-15SK
553239	DTR 15kV Vertical Line Post	DTR	Korea	15kV	12.5	312	Tie Top	Grey	IEC 61952	4.0kg	6/120	DTR-LPCN-15SK
Horizontal Line Posts for 11kV												
553107	DTR 15kV Horizontal Line Post	DTR	Korea	15kV	12.5	312	Hor Clamp	Grey	IEC 61952	4.3kg	6/120	DTR-LPH-15SK
Line Post Base Fittings												
553174	DTR Vertical 300mm Gain Base	DTR	Korea						IEC 61952	4.5kg	6/60	DTR-GBV
553182	DTR Horizontal 300mm Gain Base	DTR	Korea						IEC 61952	3.3kg	6/60	DTR-GBH



DTR POLYMER LINE POST INSULATORS FOR 22kV

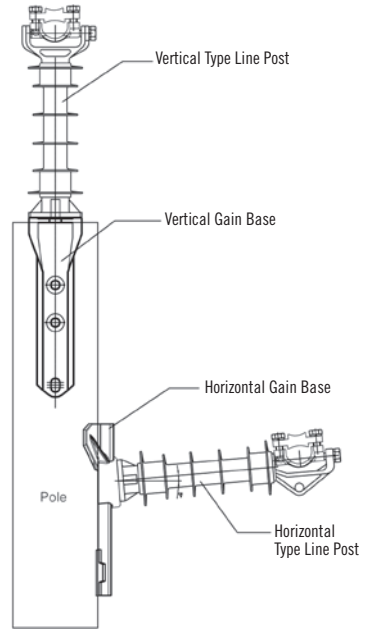
Part Number	Description	Brand	Origin	Volts	kN	Creep	Line Fitting	Colour	Standard	Weight	Box/ Pallet	Drawing
Vertical Line Posts for 22kV												
553115	DTR 28kV Vertical Line Post	DTR	Korea	28kV	12.5	506	Vert Clamp	Grey	IEC 61952	4.7kg	6/120	DTR-LPV-25SK
553247	DTR 28kV Vertical Line Post	DTR	Korea	28kV	12.5	506	Tie Top	Grey	IEC 61952	4.1kg	6/120	DTR-LPFN-25SK
Horizontal Line Posts for 22kV												
553123	DTR 28kV Horizontal Line Post	DTR	Korea	28kV	12.5	506	Hor Clamp	Grey	IEC 61952	4.3kg	6/120	DTR-LPH-25SK
Line Post Base Fittings												
553174	DTR Vertical 300mm Gain Base	DTR	Korea						IEC 61952	4.5kg	6/60	DTR-GBV
553182	DTR Horizontal 300mm Gain Base	DTR	Korea						IEC 61952	3.3kg	6/60	DTR-GBH



35kV Horizontal Clamp Line Post



35kV Tie Top Line Post

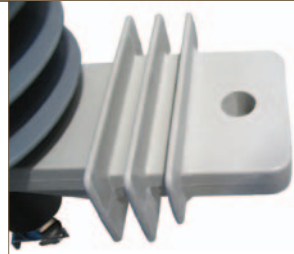


DTR POLYMER LINE POST INSULATORS FOR 33kV & 66kV

Part Number	Description	Brand	Origin	Volts	kN	Creep	Line Fitting	Colour	Standard	Weight	Box/Pallet	Drawing
Vertical Line Posts for 33kV												
553131	DTR 35kV Vertical Line Post	DTR	Korea	35kV	12.5	602	Vert Clamp	Grey	IEC 61952	4.9kg	6/120	DTR-LPV-35SK
553255	DTR 35kV Vertical Line Post	DTR	Korea	35kV	12.5	602	Tie Top	Grey	IEC 61952	4.3kg	6/120	DTR-LPFN-35SK
Horizontal Line Posts for 33kV												
553158	DTR 35kV Horizontal Line Post	DTR	Korea	35kV	12.5	602	Hor Clamp	Grey	IEC 61952	4.9kg	6/120	DTR-LPH-35SK
Vertical Line Posts for 66kV												
553166	DTR 69kV Vertical Line Post	DTR	Korea	69kV	11.0	1387	Tie Top	Grey	IEC 61952	7.5kg	1/60	DTR-LPFN-69SK
Line Post Base Fittings												
553174	DTR Vertical 300mm Gain Base	DTR	Korea						IEC 61952	4.5kg	6/60	DTR-GBV
553182	DTR Horizontal 300mm Gain Base	DTR	Korea						IEC 61952	3.3kg	6/60	DTR-GBH



12kV Class 1 (553042)



Bracket



Top Fitting



12kV with 100mm Top Fitting (553077)



Base Fitting

DTR POLYMER 12kV & 18kV SURGE ARRESTERS

Part Number	Description	Brand	Origin	Volts	Amps	Class	Top Fitting	Bracket	Colour	Standard	Weight	Box	Pallet	Drawing
12kV Rated Voltage														
553042	DTR 12kV 10kA Class 1 Surge Arrester	DTR	Korea	12kV	10kA	1	32mm	Nema	Grey	IEC 60099-4	3.7kg	3	168	CA12/10.1D
553204	DTR 12kV 10kA Class 2 Surge Arrester	DTR	Korea	12kV	10kA	2	32mm	Nema	Grey	IEC 60099-4	4.2kg	3	168	CA12/10.2D
553077	DTR 12kV 10kA Class 1 Surge Arrester	DTR	Korea	12kV	10kA	1	100mm	Nema	Grey	IEC 60099-4	3.7kg	3	168	CA12/10.HD
18kV Rated Voltage														
553050	DTR 18kV 10kA Class 1 Surge Arrester	DTR	Korea	18kV	10kA	1	32mm	Nema	Grey	IEC 60099-4	4.5kg	3	168	CA18/10.1D



TR208 25kV Station Post



DTR 15-220kV POLYMER STATION POSTS

Part Number	Description	Brand	Origin	Volts	Creepage Length	Length	Strength	Colour	Sheds	Weight	Box Qty	Drawing
15kV Rated Voltage												
553263	DTR 15kV TR205 Station Post	DTR	Korea	15kV	529mm	254mm	12.5kN	Grey	5	3.2kg	6	DTR-TR205SK
25kV Rated Voltage												
553271	DTR 25kV TR208 Station Post	DTR	Korea	25kV	824mm	357mm	12.5kN	Grey	7	4.1kg	6	DTR-TR208SK
35kV Rated Voltage												
553298	DTR 35kV TR210 Station Post	DTR	Korea	35kV	1117mm	457mm	12.5kN	Grey	9	4.5kg	6	DTR-TR210SK
46kV Rated Voltage												
553301	DTR 46kV TR214 Station Post	DTR	Korea	46kV	1436mm	559mm	12.5kN	Grey	11	5.5kg	6	DTR-TR214SK
69kV Rated Voltage												
553328	DTR 69kV TR216 Station Post	DTR	Korea	69kV	1884mm	762mm	12.0kN	Grey	15	7.7kg	6	DTR-TR216SK
150kV Rated Voltage												
553352	DTR 150kV TR219 Station Post	DTR	Korea	150kV	4128mm	1704mm	8.0kN	Grey	24	20.4kg	1	DTR-TR219SK-HP
220kV Rated Voltage												
553360	DTR 220kV TR312 Station Post	DTR	Korea	220kV	5854mm	2336mm	5.5kN	Grey	34	30.2kg	1	DTR-TR312SK



1131



4494



4497



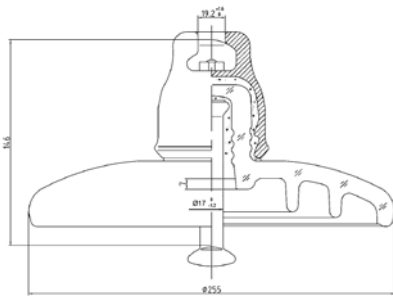
4494 Inverted



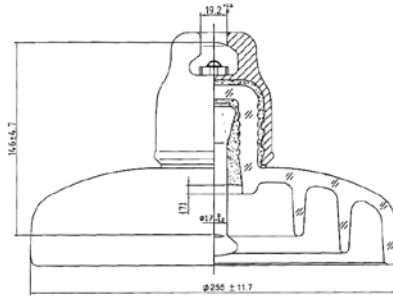
72.5kV

11-72.5kV PORCELAIN STATION POSTS

Part Number	Description	Brand	Origin	Creepage	Caps	Colour	Strength	Construction	Unit	Weight	Box/Pallet	Drawing
11kV Station Post Insulator												
104744	NZI 1131 11kV Station Post	NZI	NZ	265mm	76PCD	Grey	6kN	1 Piece	Each	4.4kg	6	D712-0501
36kV Station Post Insulators												
460001	NZI 4494 36kV Station Post	NZI	NZ	860mm	76PCD	Grey	12kN	1 Piece	Each	20.0kg	1/32	D687-0547
460028	NZI 4494 Inverted 36kV Station Post	NZI	NZ	860mm	76PCD	Grey	12kN	1 Piece	Each	20.0kg	1/32	D687-0593
44kV Station Post Insulator												
113514	NZI 4497 Heavy Duty 44kV Station Post	NZI	NZ	813mm	76PCD	Grey	11kN	Multi Shell	Each	16.0kg	1/27	D400-0502
72.5kV Station Post Insulator												
460990	NZI 72.5kV Station Post	NZI	NZ	1600mm	76PCD	Grey	8kN	1 Piece	Each	39.1kg	1	D687-0588



Standard Profile



Fog Profile



Top View

Clevis

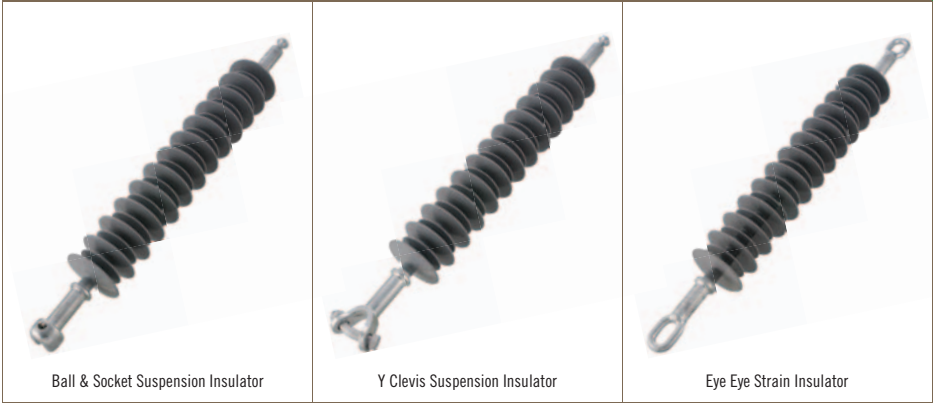


Standard Profile – Tongue & Clevis

11kV TOUGHENED GLASS SUSPENSION DISCS

Part Number	Description	Brand	Origin	Strength	Coupling	Diameter	Creepage	Colour	Standard	Unit	Weight	Box/Pallet	Drawing
Standard Profile Discs													
119350	LXY-70C 11kV Glass Disc	CECEC	China	70kN	Tongue & Clevis	255mm	320mm	Clear	IEC 383-1	Each	4.1kg	6/144	LXY-70C
119407	LXY-70 11kV Glass Disc	CECEC	China	70kN	Ball & Socket	255mm	320mm	Clear	IEC 383-1	Each	3.8kg	6/144	LXY1-70
Fog Profile Disc													
119415	LXHY-70 11kV Fog Glass Disc	CECEC	China	70kN	Ball & Socket	280mm	450mm	Clear	IEC 383-1	Each	5.3kg	6/96	LXHY4-70





DTR POLYMERIC SUSPENSION INSULATORS FOR TRANSMISSION VOLTAGES

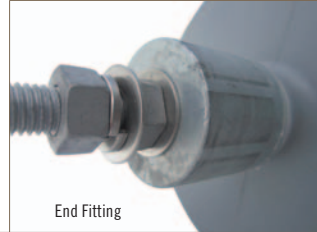
Part Number	Description	Brand	Origin	Rated	Creep	Strength	Length	Sheds	Reference	Colour	Weight	Drawing
66kV Polymer Suspension												
553379	Ball & Socket	DTR	Korea	69kV	2070	120	800	19	L011745	Grey	4.4kg	SCGL019-A6800
553387	Ball & Socket	DTR	Korea	69kV	2449	120	859	17	L011746	Grey	5.4kg	SCVL017-A6800
553395	Y Clevis	DTR	Korea	69kV	2070	120	821	19	L011746Y	Grey	4.9kg	SCGL019-A2800
553409	Eye-Eye Guy	DTR	Korea	69kV	1658	160	855	15	L066096	Grey	4.6kg	SEHL015-B1100
110kV Polymer Suspension												
553417	Ball & Socket	DTR	Korea	115kV	3754	120	1232	35	L011760	Grey	7.1kg	SCGL035-A6801
553425	Y Clevis	DTR	Korea	115kV	3754	120	1253	35	L011760Y	Grey	7.6kg	SCGL035-A2801
553433	Ball & Socket	DTR	Korea	115kV	3893	120	1214	27	L011761	Grey	8.8kg	SCGL027-A6801
553441	Ball & Socket	DTR	Korea	115kV	3754	210	1241	35	L011770	Grey	8.0kg	SFGL035-B6801
553468	Y Clevis	DTR	Korea	115kV	3754	210	1262	35	L011770Y	Grey	8.5kg	SFVL035-B2801
553476	Ball & Socket	DTR	Korea	115kV	3893	210	1226	27	L011771	Grey	9.0kg	SFVL027-B6801
220kV Polymer Suspension												
553484	Ball & Socket	DTR	Korea	230kV	7121	120	2096	67	L011762	Grey	11.9kg	SCGL067-A6811
553492	Ball & Socket	DTR	Korea	230kV	7606	120	2137	53	L011763	Grey	13.0kg	SCVL053-A6811
553506	Ball & Socket	DTR	Korea	230kV	7121	210	2105	67	L011772	Grey	12.4kg	SFGL067-B6811
553514	Ball & Socket	DTR	Korea	230kV	7607	210	2149	53	L011773	Grey	14.5kg	SCGL053-B6811
400kV Polymer Suspension												
553522	Ball & Socket	DTR	Korea	500kV	12804	120	3554	121	L011764	Grey	18.5kg	SCGL121-A6813
553530	Ball & Socket	DTR	Korea	500kV	13301	120	3557	93	L011765	Grey	21.7kg	SCVL093-A6813
553549	Ball & Socket	DTR	Korea	500kV	12804	210	3563	121	L011774	Grey	19.5kg	SFGL121-B6813
553557	Ball & Socket	DTR	Korea	500kV	13301	210	3569	93	L011775	Grey	22.7kg	SFVL093-B6813



15kV Standoff



Side View

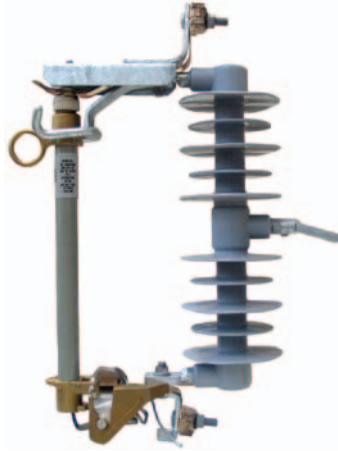


End Fitting

DTR 15kV POLYMER STANDOFF INSULATOR

Part Number	Description	Brand	Origin	Volts	Creepage	Length	Stud	Rod Dia.	Colour	Standard	Weight	Box/Pallet	Drawing
15kV Rated Voltage													
553069	DTR 15kV Standoff Insulator	DTR	Korea	15kV	550mm	328mm	M12	32mm	Grey	IEC 61109	1.8kg	6/300	ISA3-0550-GSS





Side View



Hinge



150BIL EDO



Side View



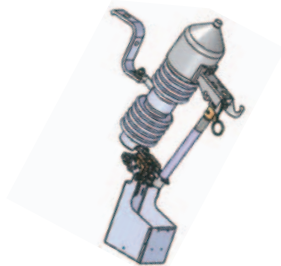
Bracket

DTR POLYMER 27kV 150BIL EDO

Part Number	Description	Brand	Origin	Volts	BIL	Current	Creepage	Length	Colour	Standard	Weight	Box/Pallet	Drawing
27kV Rated Voltage													
553190	DTR 27kV 150BIL EDO Cutout Switch	DTR	Korea	27kV	150	100A	580mm	382mm	Grey	ANSI C37.41	5.4kg	1/60	CS0270-0580-100E



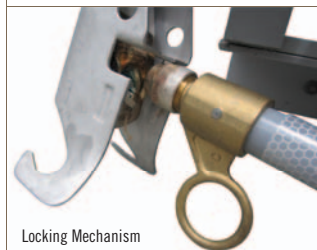
12-24kV 150BIL EDO (100A)



Showing Fire Device & Bird Cover



Hinge



Locking Mechanism

150BIL & 170BIL PORCELAIN EDO CUTOUT SWITCHES

Part Number	Description	Brand	Origin	BIL	Current	Creepage	Breaking	Colour	Standard	Weight	Box/Pallet	Drawing
150BIL EDO Mount with Fuse Tube												
539023	NGK-S 12-24kV Porcelain EDO	NGK-S	Australia	150kV	100A	475mm	8kA@12kV	Grey	AS/NZS 1033.1	12.8kg	1/49	72298/15
170BIL EDO Mount with Fuse Tube												
539031	NGK-S 24-36kV Porcelain EDO	NGK-S	Australia	170kV	100A	660mm	6kA@24kV	Grey	AS/NZS 1033.1	13.3kg	1/28	72299/27NORQEB
EDO Optional Accessories												
	NGK-S EDO Earthing Stirrup	NGK-S	Australia									70450/6
	NGK-S EDO Fire Prevention Device	NGK-S	Australia									72835
	NGK-S EDO Birdproof Cover	NGK-S	Australia									72905



Made in Australia



Hinge



Locking Mechanism



12-14kV 150BIL HVI (630A)

150BIL & 170BIL PORCELAIN HV ISOLATORS

Part Number	Description	Brand	Origin	BIL	Current	Creepage	S/T Current	Colour	Standard	Weight	Box/Pallet	Drawing
150BIL HVI												
539058	NGK-S 12-24kV Porcelain HVI	NGK-S	Australia	150kV	630A	475mm	20kA at 1sec	Grey	AS/NZS 1306	10.5kg	1/28	70414NSW
170BIL HVI												
539007	NGK-S 24-36kV Porcelain HVI	NGK-S	Australia	170kV	630A	600mm	20kA at 1sec	Grey	AS/NZS 1306	12kg	1/28	70423/1EE
170BIL HVI Optional Accessories												
	NGK-S 170BIL HVI Mounting Bracket (Z)	NGK-S	Australia	170kV								69196
	NGK-S 170BIL HVI Mounting Bracket (Nema)	NGK-S	Australia	170kV								69195
	NGK-S 170BIL HVI Mounting Bracket (Y)	NGK-S	Australia	170kV								69194
	NGK-S 170BIL HVI Earth Supports	NGK-S	Australia	170kV								



MANUAL PR3 AIR BREAK SWITCHES

Part Number	Description	Brand	Origin	Rating	Current	BIL	Rate S/T Current	Standard	Drawing
Manual Flicker Style Air Break Switches									
539139	NGK-S 12kV PR3 Vert/Hor ABS	NGK-S	Australia	12kV	630A	150kV	20kA at 1sec	AS/NZS ISO 9001:2008	69118
539147	NGK-S 24kV PR3 Vert/Hor ABS	NGK-S	Australia	24kV	630A	150kV	16kA at 1sec	AS/NZS ISO 9001:2008	69119
539155	NGK-S 36kV PR3 Vert/Hor ABS	NGK-S	Australia	36kV	630A	200kV	20kA at 1sec	AS/NZS ISO 9001:2008	69120
Optional Accessories for 24 & 36kV ABS									
	NGK-S ABS Earth Switch (24 & 36kV only)	NGK-S	Australia						
Optional Accessories for all ABS									
	NGK-S ABS Dropout Fuse Mount	NGK-S	Australia						
	NGK-S ABS Crossarm	NGK-S	Australia						
	NGK-S ABS Operating Handle	NGK-S	Australia						
	NGK-S ABS Mounting Bracket Kit	NGK-S	Australia						
	NGK-S ABS Double Break Interrupter	NGK-S	Australia						
	NGK-S ABS ARCBREK5 Interrupter	NGK-S	Australia						



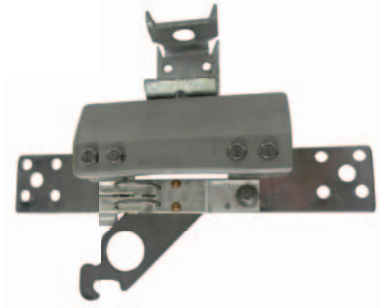
Compact 12kV SF6



Compact 24kV SF6

MANUAL SF6 LOAD BREAK GAS SWITCHES

Part Number	Description	Brand	Origin	Rating	Current	Making Current	Standard	Nett Weight	Drawing
Manual SF6 Gas Switches									
539082	NGK-S 12kV SF6 Compact Gas Switch	NGK-S	Australia	12kV	630A	41.6kA	AS/NZS ISO 9001:2008	75kg	91776
539090	NGK-S 24kV SF6 Compact Gas Switch	NGK-S	Australia	24kV	630A	41.6kA	AS/NZS ISO 9001:2008	90kg	90030
539104	NGK-S 36kV SF6 Gas Switch	NGK-S	Australia	36kV	630A	33kA	AS/NZS ISO 9001:2008	180kg	90012/38
Optional Accessories for all SF6									
	NGK-S SF6 Safety Locking Kit	NGK-S	Australia						91777
Optional Accessories for 12 & 24kV SF6									
	NGK-S SF6 12/24 Crossarm	NGK-S	Australia						91743
	NGK-S SF6 12/24 Surge Diverter Mounting Kit	NGK-S	Australia						91806
	NGK-S SF6 12/24 Mid Pole Activator Kit	NGK-S	Australia						95110
Optional Accessories for 36kV SF6									
	NGK-S SF6 36 Crossarm	NGK-S	Australia						90481
	NGK-S SF6 36 Pole Top Mounting Kit	NGK-S	Australia						90498
	NGK-S SF6 36 Surge Diverter Mounting Kit	NGK-S	Australia						95001



630A Low Voltage Isolator (LVI)



630A Low Voltage Fused Isolator (LVFI)

LVI SOLID LINK & LVFI FUSED LINK ISOLATORS

Part Number	Description	Brand Origin	Rating	Current	Contacts	Standard	Weight	Box Qty	Drawing
Single Solid Link LVI									
258377	NGK-S Low Voltage Isolator	NGK-S Australia	480V	630A	Silver M12	AS175-1975	2.5kg	3	NZ4284
Single Fused Link LVFI									
258385	NGK-S Low Voltage Fused Isolator	NGK-S Australia	480V	630A	Silver M12	AS175-1975	3.3kg	3	NZ4286





Shear Lock



TOD-4/12



TOD-7/19



CV6P



CV9P

FULTON CLAMPS & CONNECTORS

Part Number	Description	Brand	Origin	Construction	Bolts	Conductor	Length	Unit	Box Qty	Weight	Drawing
Shear Lock Wedge Clamp											
524107	Fulton ECW-1 Shear Lock Clamp	Fulton	Australia	Gunmetal	304 Stainless	25-70mm ²	56mm	Each	25	950g	595-A4
Tee-Off Connectors											
523003	Fulton TOD-4/12 Double Bolted Tee-Off	Fulton	Australia	Aluminium	304 Stainless	Ø4-12mm	70mm	Each	50	400g	
523011	Fulton TOD-7/19 Double Bolted Tee-Off	Fulton	Australia	Aluminium	304 Stainless	Ø7-19mm	95mm	Each	30	475g	
3-Piece Rising Main Connector											
524050	Fulton CV6P Rising Main Connector	Fulton	Australia	Gunmetal Electro-tin Plated	316 Stainless	120-240mm ²	70mm	Each	15	950g	
524069	Fulton CV9P Rising Main Connector	Fulton	Australia	Gunmetal Electro-tin Plated	316 Stainless	240-500mm ²	86mm	Each	15	1.4kg	

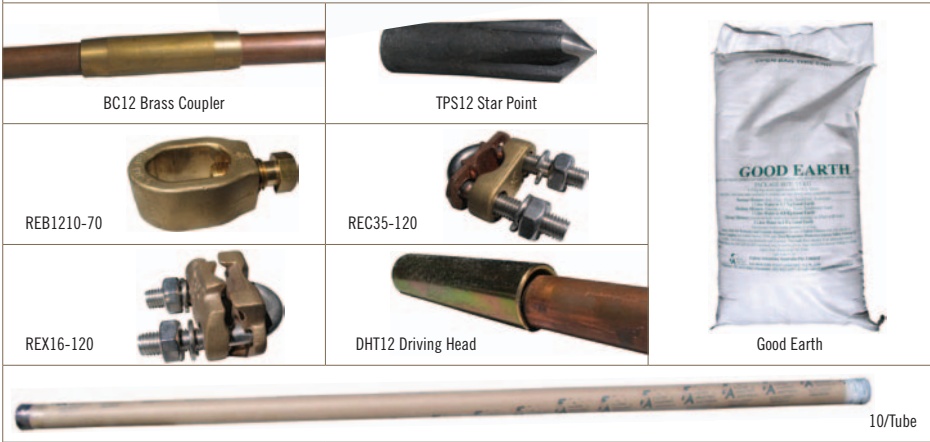


AVON HDG & STAINLESS STEEL EARTHING RODS

Part Number	Description	Brand	Origin	Length	Diameter	Construction	Unit	Weight	Pack Qty	Drawing
16mm HDG Steel Earth Rods										
537071	Avon 16mm Pointed Earth Rod (no tab)	Avon	NZ	2.0m	16mm	HDG Steel	Each	3.3kg	10	AA24005
537098	Avon 16mm Pointed Earth Rod (with HD12A Tab)	Avon	NZ	2.0m	16mm	HDG Steel	Each	3.3kg	10	AA24009
Coupler for Avon HDG Earth Rods										
537101	Avon 16mm HDG Earth Rod Coupler	Avon	NZ	110mm	16mm	HDG Steel	Each	200g	10	AA24024
12mm Stainless Steel Earth Rod										
537128	Avon 12mm Tapered Earth Rod (no tab)	Avon	NZ	1.5m	12mm	316 Stainless	Each	1.4kg	10	AA24021
Coupler for Avon Stainless Earth Rod										
537136	Avon 12mm Stainless Earth Rod Coupler	Avon	NZ	85mm	12mm	316 Stainless	Each	50g	10	AA24015



12mm 1800mm 500micron Copper-Clad Earth Rod (to AS1572)



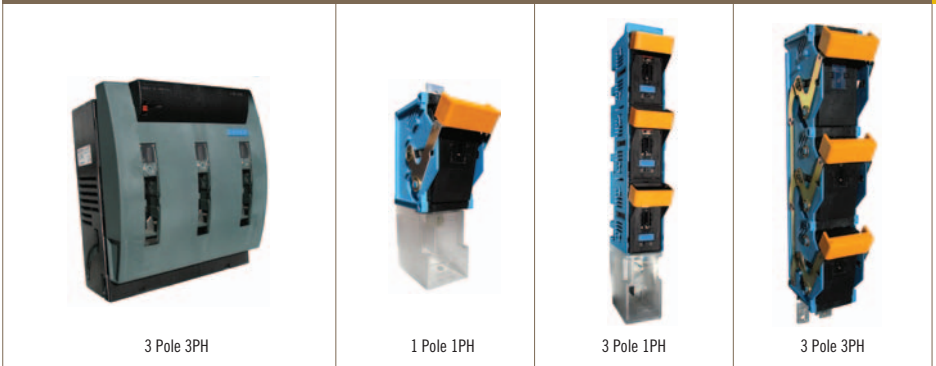
FULTON Ø12MM EARTH RODS, ACCESSORIES & GOOD EARTH

Part Number	Description	Brand	Origin	Diameter	Length	Detail	Unit	Weight	Pack Qty	Drawing
Ø12mm Copper-Clad Earth Rod										
523097	Fulton CDR-12-1800 Earth Rod	Fulton	Australia	12mm	1800mm	Steel to AS3679	Each	2.0kg	10	657-A4
Accessories for Ø12mm Earth Rods										
523100	Fulton BC12 Brass Coupler for 12mm	Fulton	Australia	Fit 12mm	70mm		Each	70g	20	615-A4
523119	Fulton TPS12 Star Point	Fulton	Australia	Fit 12mm	72mm		Each	100g	20	658-A4
523070	Fulton REB1210-70 Clamp	Fulton	Australia	Fit 12mm	40mm	Cable Range 10-70mm ²	Each	100g	20	
523089	Fulton REC35-120 Clamp	Fulton	Australia	Fit 12mm	67mm	Cable Range 35-120mm ²	Each	150g	10	611-A4
523844	Fulton REX16-120 Clamp	Fulton	Australia	Fit 12mm	64mm	Cable Range 16-120mm ²	Each	260g	10	945-A4
523461	Fulton DHT12 Driving Head Tool	Fulton	Australia	Fit 12mm	102mm		Each	300g	5	659-A4
523488	Fulton 900 Kango Driving Moil	Fulton	Australia	Fit 12mm			Each	570g	1	
Earthing Compound										
523704	Fulton Good Earth	Fulton	Australia			Covers 0.03m ³	Each	15kg	1	



EFEN COMPONENTS

Part Number	Description	Brand	Origin	Efen Code	Amps	Standard	Unit	Weight	Box Qty
Efen Bases									
531049	Efen NH00 160A Base Only	Efen	Germany	33000-0050	160A	IEC 947-3	Each	80g	1
530735	Efen NH1 250A Base Only	Efen	Germany	33027-0010	250A	IEC 947-3	Each	240g	1
531006	Efen NH2 400A Base Only	Efen	Germany	33032-0010	400A	IEC 947-3	Each	400g	1
530522	Efen NH3 630A Base Only	Efen	Germany	33035-0020	630A	IEC 947-3	Each	490g	1
Efen Rails									
531812	Efen NH00 160A Rail Only	Efen	Germany	38570-0020	160A	IEC 947-3	Each	1.5kg	1
531855	Efen NH1-2 400A Rail Only	Efen	Germany	38854-0020	400A	IEC 947-3	Each	4.4kg	1
531863	Efen NH3 630A Rail Only	Efen	Germany	38954-0020	630A	IEC 947-3	Each	4.8kg	1
Efen Accessories									
531251	Terminal Cover Size 1-3 (1 Pole)	Efen	Germany	31319-0200		IEC 947-3	Each	145g	1
531200	Twin Adaptor	Efen	Germany	36105-0020		IEC 947-3	Each	800g	1
531456	Striker Base 690V	Efen	Germany	33087-0010		IEC 947-3	Each	55g	1
531871	Fuse Cover	Efen	Germany	36047-0010		IEC 947-3	Each	325g	1
531480	Size 2 Monitoring Lid c/w Striker	Efen	Germany	83360-0100		IEC 947-3	Each	110g	1
531952	Size 3 Monitoring Lid c/w Striker	Efen	Germany	83361-0100		IEC 947-3	Each	165g	1
531448	Striker	Efen	Germany	36031-0010		IEC 947-3	Each	15g	1
530778	Size 00 Frame Shroud	Efen	Germany	40468-0100		IEC 947-3	Each	25g	1
530352	Size 1 Contact Shroud	Efen	Germany	31151-0010		IEC 947-3	Each	30g	1
530360	Size 2 Contact Shroud	Efen	Germany	31135-0010		IEC 947-3	Each	90g	1
530239	160A Contact Shroud	Efen	Germany	31401-0100		IEC 947-3	Each	18g	1



EFEN DIN FUSE SWITCH DISCONNECTS

Part Number	Description	Brand	Origin	Efen Code	Amps	Poles	Phase	Standard	Unit	Weight	Box Qty
Horizontal 1 Pole (Single Phase)											
531022	Efen NH00 160A Switch	Efen	Germany	33107-0010	160A	1	Single	IEC 947-3	Each	360g	1
531030	Efen NH1 250A Switch	Efen	Germany	33095-0010	250A	1	Single	IEC 947-3	Each	2.1kg	1
530964	Efen NH2 400A Switch	Efen	Germany	33096-0010	400A	1	Single	IEC 947-3	Each	2.1kg	1
530972	Efen NH3 630A Switch	Efen	Germany	33097-0010	630A	1	Single	IEC 947-3	Each	2.3kg	1
530999	Efen NH4A 1250A Switch	Efen	Germany	33047-0010	1250A	1	Single	IEC 947-3	Each	4.4kg	1
Vertical 3 Pole (Single Phase)											
531804	Efen NH00 160A Switch	Efen	Germany	38520-0000	160A	3	Single	IEC 947-3	Each	2.3kg	1
531839	Efen NH1 250A Switch	Efen	Germany	38612-0000	250A	3	Single	IEC 947-3	Each	6.4kg	1
530514	Efen NH2 400A Switch	Efen	Germany	38622-0000	400A	3	Single	IEC 947-3	Each	6.5kg	1
530506	Efen NH3 630A Switch	Efen	Germany	38632-0000	630A	3	Single	IEC 947-3	Each	6.8kg	1
Horizontal 3 Pole (Three Phase)											
530859	Efen NH00 100A Switch	Efen	Germany	34050-0000	100A	3	Three	IEC 947-3	Each	500g	1
530409	Efen NH00 160A Switch	Efen	Germany	34060-0000	160A	3	Three	IEC 947-3	Each	600g	1
531928	Efen NH1 250A Switch	Efen	Germany	34162-0000	250A	3	Three	IEC 947-3	Each	2.1kg	1
530743	Efen NH2 400A Switch	Efen	Germany	34262-0000	400A	3	Three	IEC 947-3	Each	3.0kg	1
530727	Efen NH3 630A Switch	Efen	Germany	34362-0000	630A	3	Three	IEC 947-3	Each	4.0kg	1
530980	Efen NH4A 1250A Switch	Efen	Germany	34400-0000	1250A	3	Three	IEC 947-3	Each	12.7kg	1
Vertical 3 Pole (Three Phase)											
531065	Efen NH00 160A Switch	Efen	Germany	38502-0000	160A	3	Three	IEC 947-3	Each	1.2kg	1
531790	Efen NH1 250A Switch	Efen	Germany	38612-0020	250A	3	Three	IEC 947-3	Each	5.8kg	1
531820	Efen NH2 400A Switch	Efen	Germany	38622-0020	400A	3	Three	IEC 947-3	Each	6.2kg	1
531146	Efen NH3 630A Switch	Efen	Germany	38300-0025	630A	3	Three	IEC 947-3	Each	8.2kg	1



Lineguard



Lineguard



Mini Wedge*



Mini Wedge*

LINEGUARD DISCONNECTS & MINI WEDGE FUSEHOLDER

Part Number	Description	Brand	Origin	Amps	Colour	Detail	Complies With	Unit	Weight	Box Qty
Lineguard Disconnects										
468177	Lineguard 100A Ferrule Disconnect	NZI	NZ	100A	Black	Polyamide & Nickle-Plated NFM	IEC 60947	Each	545g	20
468185	Lineguard 160A NH00 Disconnect	NZI	NZ	160A	Black	Polyamide & Nickle-Plated NFM	IEC 60947	Each	505g	20
Porcelain Mini Wedge Fuseholder*										
468789	NZI Mini Wedge Offset Tag Carrier/Base Complete*	NZI	NZ	200A	Grey	Porcelain & ETPNFM	AS/NZS 3947	Each	3.0kg	5

* Mini Wedge – some brown still in stock, phased change to grey



FSD 400 Three Phase



FSD 401 Single Phase



3 x FSD 401



FSD 401 Back View



FSD 401 Bracket

FSD THREE PHASE & SINGLE PHASE SWITCH DISCONNECTS

Part Number	Description	Brand	Origin	Rating	Fused	Terminations	Palm	Standard	Weight	Box Qty	Drawing
FSD Three Phase Disconnector											
468908	NGK-S FSD 400 Three Phase	NGK-S	Australia	415V	400A	Terminal	Palm Copper	4.76mm AS/NZS 3947-1	6.0kg	1	71969/5
FSD Single Phase Disconnectors											
468916	NGK-S FSD 401/1.4 Single Phase	NGK-S	Australia	415V	400A	Terminal	Palm Copper	4.76mm AS/NZS 3947-1	1.9kg	3	73401/5
468819	NGK-S FSD 631 Single Phase	NGK-S	Australia	415V	630A	Terminal	Palm Copper	6.35mm AS/NZS 3947-1	1.9kg	3	736311
FSD Bracket for Single Phase Disconnectors											
469106	NGK-S FSD 401 Bracket for 3 x S/P FSD	NGK-S	Australia					AS/NZS 3947-1	1.7kg	1	72923

NZI Pole Mounted CUTOUTS

REWIREABLE PORCELAIN POLE MOUNTED CUTOUTS*

Part Number	Description	Brand	Origin	Amps	Colour	Construction	Complies With	Unit	Weight	Box Qty
Rewireable Series – 30A*										
144029	NZI Rewireable Cutout 30A Complete	NZI	NZ	30A	Grey	Porcelain & ETPNFM	AS/NZS 3947	Each	690g	1
146137	NZI Rewireable Cutout 30A Complete (Wired)	NZI	NZ	30A	Grey	Porcelain & ETPNFM	AS/NZS 3948	Each	690g	1
144452	NZI Rewireable Cutout 30A Plug Only	NZI	NZ	30A	Grey	Porcelain & ETPNFM	AS/NZS 3949	Each	190g	54
144061	NZI Rewireable Cutout 30A Plug Only (Wired)	NZI	NZ	30A	Grey	Porcelain & ETPNFM	AS/NZS 3950	Each	190g	1
144495	NZI Rewireable Cutout 30A Base Only	NZI	NZ	30A	Grey	Porcelain & ETPNFM	AS/NZS 3951	Each	460g	1
Rewireable Series – 60A*										
144398	NZI Rewireable Cutout 60A Complete	NZI	NZ	60A	Grey	Porcelain & ETPNFM	AS/NZS 3954	Each	1.5kg	15
146110	NZI Rewireable Cutout 60A Complete (Wired)	NZI	NZ	60A	Grey	Porcelain & ETPNFM	AS/NZS 3955	Each	1.5kg	1
144444	NZI Rewireable Cutout 60A Plug Only	NZI	NZ	60A	Grey	Porcelain & ETPNFM	AS/NZS 3956	Each	380g	30
146129	NZI Rewireable Cutout 60A Plug Only (Wired)	NZI	NZ	60A	Grey	Porcelain & ETPNFM	AS/NZS 3957	Each	380g	1
144509	NZI Rewireable Cutout 60A Base Only	NZI	NZ	60A	Grey	Porcelain & ETPNFM	AS/NZS 3958	Each	1.1kg	15
Rewireable Series – 100A*										
144916	NZI Rewireable Cutout 100A Complete	NZI	NZ	100A	Grey	Porcelain & ETPNFM	AS/NZS 3961	Each	3.1kg	6
146145	NZI Rewireable Cutout 100A Complete (Wired)	NZI	NZ	100A	Grey	Porcelain & ETPNFM	AS/NZS 3962	Each	3.1kg	1
144959	NZI Rewireable Cutout 100A Plug Only	NZI	NZ	100A	Grey	Porcelain & ETPNFM	AS/NZS 3963	Each	720g	1
144703	NZI Rewireable Cutout 100A Plug Only (Wired)	NZI	NZ	100A	Grey	Porcelain & ETPNFM	AS/NZS 3964	Each	720g	1

* Rewireable – some brown still in stock, phased change to grey





30A HRC



60A HRC



HRC Cutout

HRC PORCELAIN POLE MOUNTED CUTOUTS*

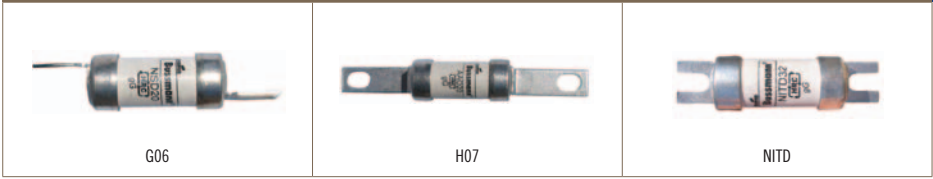
Part Number	Description	Brand	Origin	Amps	Colour	Fuse Installed	Construction	Unit	Weight	Box Qty
HRC Series – 30A*										
144037	NZI HRC Cutout 30A Complete	NZI	NZ	30A	Grey		Porcelain & ETPNFM	Each	620g	1
144118	NZI HRC Cutout 30A Plug Only	NZI	NZ	30A	Grey		Porcelain & ETPNFM	Each	130g	1
144495	NZI HRC Cutout 30A Base Only	NZI	NZ	30A	Grey		Porcelain & ETPNFM	Each	460g	1
HRC Series – 60A*										
144401	NZI HRC Cutout 60A Complete	NZI	NZ	60A	Grey		Porcelain & ETPNFM	Each	1.7kg	15
144460	NZI HRC Cutout 60A Complete (Fuse Installed)	NZI	NZ	60A	Grey	60 KR85	Porcelain & ETPNFM	Each	1.8kg	15
144525	NZI HRC Cutout 60A Plug Only	NZI	NZ	60A	Grey		Porcelain & ETPNFM	Each	595g	30
144630	NZI HRC Cutout 60A Plug Only (Fuse Installed)	NZI	NZ	60A	Grey	60 KR85	Porcelain & ETPNFM	Each	645g	30
144509	NZI HRC Cutout 60A Base Only	NZI	NZ	60A	Grey		Porcelain & ETPNFM	Each	1.1kg	15

* HRC – some brown still in stock, phased change to grey



HG PHENOLIC PLASTIC FUSEHOLDERS

Part Number	Description	Brand	Origin	Amps	Rating	Configuration	Complies	Unit	Weight	Box Qty	
32A Fuseholders											
540161	G06 32A DIN EE/EE	China	32A	550V	End Entry	End Entry	AS/NZS 60269	Each	85g	5	
540757	G06 32A DIN BE/BE	China	32A	550V	Back Entry	Back Entry	AS/NZS 60269	Each	85g	5	
63A Fuseholders											
676004	NZI K07 63A EE/EE	NZI	NZ	63A	500V	End Entry	End Entry	BS88 Part2 1975	Each	260g	6
676012	NZI K07 63A BE/BE	NZI	NZ	63A	500V	Back Entry	Back Entry	BS88 Part2 1975	Each	270g	6
676020	NZI K07 63A BE/EE	NZI	NZ	63A	500V	Back Entry	End Entry	BS88 Part2 1975	Each	265g	6
678023	NZI K07 63A BS/BE	NZI	NZ	63A	500V	Back Stud	Back Entry	BS88 Part2 1975	Each	320g	1
678031	NZI K07 63A BS/EE	NZI	NZ	63A	500V	Back Stud	End Entry	BS88 Part2 1975	Each	320g	1
678058	NZI K07 63A BB/EE	NZI	NZ	63A	500V	Back Busbar	End Entry	BS88 Part2 1975	Each	290g	1
678066	NZI K07 63A EB/EE	NZI	NZ	63A	500V	End Busbar	End Entry	BS88 Part2 1975	Each	280g	1
678074	NZI K07 63A EB/BE	NZI	NZ	63A	500V	End Busbar	Back Entry	BS88 Part2 1975	Each	280g	1
678007	NZI K07 63A BS/BS	NZI	NZ	63A	500V	Two Back Studs		BS88 Part2 1975	Each	380g	1
100A Fuseholder											
678678	NZI L14 100A EE/EE	NZI	NZ	100A	500V	End Entry	End Entry	BS88 Part2 1975	Each	870g	1



G06, H07 & NITD FUSELINKS (CLASS gG)

Part Number	Description	Brand	Origin	Amps	Volts	Break Capacity	Tags	Unit	Box Qty
G06 Staggered HRC Fuselinks									
644609	2G06 (NSD2)	Bussmann	India	2A	550V	80kA	Staggered	Each	20
644617	4G06 (NSD4)	Bussmann	India	4A	550V	80kA	Staggered	Each	20
644625	6G06 (NSD6)	Bussmann	India	6A	550V	80kA	Staggered	Each	20
644633	10G06 (NSD10)	Bussmann	India	10A	550V	80kA	Staggered	Each	20
644641	16G06 (NSD16)	Bussmann	India	16A	550V	80kA	Staggered	Each	20
644668	20G06 (NSD20)	Bussmann	India	20A	550V	80kA	Staggered	Each	20
646881	25G06 (NSD25)	Bussmann	India	25A	550V	80kA	Staggered	Each	20
646903	32G06 (NSD32)	Bussmann	India	32A	550V	80kA	Staggered	Each	20
H07 Offset HRC Fuselinks									
645303	2H07 (AA02)	Bussmann	India	2A	550V	80kA	Offset Bolted	Each	20
645311	4H07 (AA04)	Bussmann	India	4A	550V	80kA	Offset Bolted	Each	20
645338	6H07 (AA06)	Bussmann	India	6A	550V	80kA	Offset Bolted	Each	20
645346	10H07 (AA010)	Bussmann	India	10A	550V	80kA	Offset Bolted	Each	20
645354	16H07 (AA016)	Bussmann	India	16A	550V	80kA	Offset Bolted	Each	20
645362	20H07 (AA020)	Bussmann	India	20A	550V	80kA	Offset Bolted	Each	20
645370	25H07 (AA025)	Bussmann	India	25A	550V	80kA	Offset Bolted	Each	20
645389	32H07 (AA032)	Bussmann	India	32A	550V	80kA	Offset Bolted	Each	20
NITD Offset HRC Fuselinks									
641332	NITD2	Bussmann	India	2A	550V	80kA	Offset Slotted	Each	20
641340	NITD4	Bussmann	India	4A	550V	80kA	Offset Slotted	Each	20
641359	NITD6	Bussmann	India	6A	550V	80kA	Offset Slotted	Each	20
641367	NITD10	Bussmann	India	10A	550V	80kA	Offset Slotted	Each	20
641375	NITD16	Bussmann	India	16A	550V	80kA	Offset Slotted	Each	20
641383	NITD20	Bussmann	India	20A	550V	80kA	Offset Slotted	Each	20
641391	NITD25	Bussmann	India	25A	550V	80kA	Offset Slotted	Each	20
641405	NITD32	Bussmann	India	32A	550V	80kA	Offset Slotted	Each	20

Fuses on this page comply to BS88 Pt6 (G06), BS88 Pt1&2 (H07, NITD) and IEC 60269-1 (all) Standards



K07



L14



M14



L09

K07, L14, M14 & L09 FUSELINKS (CLASS gG)

Part Number	Description	Brand	Origin	Amps	Volts	Break Capacity	Tags	Unit	Box Qty
K07 Offset HRC Fuselinks									
645664	40K07 (BA040)	Bussmann	India	40A	550V	80kA	Offset	Each	20
645680	50K07 (BA050)	Bussmann	India	50A	550V	80kA	Offset	Each	20
645702	63K07 (BA063)	Bussmann	India	63A	550V	80kA	Offset	Each	20
692336	80K07R (OSD80)	Bussmann	India	80A	550V	80kA	Offset	Each	20
692344	100K07R (OSD100)	Bussmann	India	100A	550V	80kA	Offset	Each	20
L14 Offset HRC Fuselinks									
646512	32L14 (CE032)	Bussmann	India	32A	550V	80kA	Offset	Each	10
646520	40L14 (CE040)	Bussmann	India	40A	550V	80kA	Offset	Each	10
646539	50L14 (CE050)	Bussmann	India	50A	550V	80kA	Offset	Each	10
646547	63L14 (CE063)	Bussmann	India	63A	550V	80kA	Offset	Each	10
646555	80L14 (CE080)	Bussmann	India	80A	550V	80kA	Offset	Each	10
646563	100L14 (CE0100)	Bussmann	India	100A	550V	80kA	Offset	Each	10
M14 Offset HRC Fuselinks									
646636	125M14 (DE0125)	Bussmann	India	125A	415V	80kA	Offset	Each	5
646652	160M14 (DE0160)	Bussmann	India	160A	415V	80kA	Offset	Each	5
646660	200M14 (DE0200)	Bussmann	India	200A	415V	80kA	Offset	Each	5
L09 Offset HRC Fuselinks									
646458	80L09 (CD80)	Bussmann	India	80A	550V	80kA	Offset	Each	10
646466	100L09 (CD100)	Bussmann	India	100A	550V	80kA	Offset	Each	10

Fuses on this page comply to BS88 Pt1&2 and IEC 60269-1 Standards





M09, N09, P09, N11, P11 & R11 FUSELINKS (CLASS gG)

Part Number	Description	Brand	Origin	Amps	Volts	Break Capacity	Tags	Unit	Box Qty
M09 Central HRC Fuselinks									
646571	125M09 (DD125)	Bussmann	India	125A	415V	80kA	Central	Each	5
646601	160M09 (DD160)	Bussmann	India	160A	415V	80kA	Central	Each	5
646628	200M09 (DD200)	Bussmann	India	200A	415V	80kA	Central	Each	5
N09 Central HRC Fuselinks									
646709	250N09 (ED250)	Bussmann	India	250A	415V	80kA	Central	Each	1
646717	315N09 (ED315)	Bussmann	India	315A	415V	80kA	Central	Each	1
P09 Central HRC Fuselinks									
646679	355P09 (ED355)	Bussmann	India	355A	415V	80kA	Central	Each	1
646687	400P09 (ED400)	Bussmann	India	400A	415V	80kA	Central	Each	1
N11 Central HRC Fuselinks									
646768	250N11 (EFS250)	Bussmann	India	250A	415V	80kA	Central	Each	1
646776	315N11 (EFS315)	Bussmann	India	315A	415V	80kA	4-Hole Central	Each	1
P11 Central HRC Fuselinks									
647942	355P11 (EF355)	Bussmann	India	355A	415V	80kA	4-Hole Central	Each	1
646644	400P11 (EF400)	Bussmann	India	400A	415V	80kA	4-Hole Central	Each	1
R11 Central HRC Fuselinks									
646946	450R11 (FF450)	Bussmann	India	450A	550V	80kA	4-Hole Central	Each	1
646954	500R11 (FF500)	Bussmann	India	500A	550V	80kA	4-Hole Central	Each	1
646962	560R11 (FF550)	Bussmann	India	550A	550V	80kA	4-Hole Central	Each	1
646970	630R11 (FF630)	Bussmann	India	550A	550V	80kA	4-Hole Central	Each	1

Fuses on this page comply to BS88 Pt1&2 and IEC 60269-1 Standards



G06 Motor Circuit



H07 Motor Circuit



K07 Motor Circuit



P11 Motor Circuit

BS88 MOTOR CIRCUIT FUSELINKS (CLASS gG)

Part Number	Description	Brand	Origin	Amps	Volts	Break Capacity	Tags	Unit	Box Qty
G06 HRC Motor Circuit Fuses									
649201	20M25 G06 MC (NSD20M25)	Bussmann	India	20M25	415V	80kA	Staggered	Each	20
649228	20M32 G06 MC (NSD20M32)	Bussmann	India	20M32	415V	80kA	Staggered	Each	20
649236	32M40 G06 MC (NSD32M40)	Bussmann	India	32M40	415V	80kA	Staggered	Each	20
H07 HRC Motor Circuit Fuses									
649368	32M40 H07 MC (AAO32M40)	Bussmann	India	20M25	550V	80kA	Offset	Each	20
649384	32M50 H07 MC (AAO32M50)	Bussmann	India	20M32	550V	80kA	Offset	Each	20
649392	32M63 H07 MC (AAO32M63)	Bussmann	India	32M40	550V	80kA	Offset	Each	20
K07 HRC Motor Circuit Fuses									
649457	63M80 K07 MC (BAO63M80)	Bussmann	India	63M80	550V	80kA	Offset	Each	20
649465	63M100 K07 MC (BAO63M100)	Bussmann	India	63M80	550V	80kA	Offset	Each	20
Other HRC Motor Circuit Fuses									
649651	100M125 L09 MC (CD100M125)	Bussmann	India	100M125	415V	80kA	Central	Each	10
649597	100M125 L14 MC (CEO100M125)	Bussmann	India	100M125	415V	80kA	Offset	Each	10
649678	100M160 L09 MC (CD100M160)	Bussmann	India	100M160	415V	80kA	Central	Each	10
649619	100M160 L14 MC (CEO100M160)	Bussmann	India	100M160	415V	80kA	Offset	Each	10
649627	100M200 L14 MC (CEO100M200)	Bussmann	India	100M200	415V	80kA	Offset	Each	10
649694	200M250 M09 MC (DD200M250)	Bussmann	India	200M250	415V	80kA	Central	Each	5
649643	200M250 M14 MC (DEO200M250)	Bussmann	India	200M250	415V	80kA	Offset	Each	5
649724	315M400 N09 MC (ED315M400)	Bussmann	India	315M400	550V	80kA	Central	Each	1
646695	400M500 P09 MC (ED400M500)	Bussmann	India	200M250	415V	80kA	Central	Each	1
647950	400M500 P11 MC (EF400M500)	Bussmann	India	400M500	550V	80kA	Central	Each	1

Fuses on this page comply to BS88 Pt6 (G06), BS88 Pt1&2 (H07, K07, Central Tag) and IEC 60269-1 (all) Standards



Solid Link



NH000



NH00

SOLID LINK, NH000 & NH00 DIN FUSES (CLASS gG)

Part Number	Description	Brand	Origin	Amps	Volts (AC)	Break Capacity	Configuration	Unit	Box Qty
Solid Link Blades									
688983	160A Solid Link 00 (SL00)	Bussmann	India	160A	500V	120kA	Solid Link	Each	3
657115	250A Solid Link 1 (SL1)	Bussmann	India	250A	500V	120kA	Solid Link	Each	3
689300	400A Solid Link 2 (SL2)	Bussmann	India	400A	500V	120kA	Solid Link	Each	3
657131	630A Solid Link 3 (SL3)	Bussmann	India	630A	500V	120kA	Solid Link	Each	3
NH000 DIN HRC Fuselinks									
688584	10A NH000 (10NHG000B)	Bussmann	India	10A	500V	120kA	DIN Blade	Each	3
690317	16A NH000 (16NHG000B)	Bussmann	India	16A	500V	120kA	DIN Blade	Each	3
689130	20A NH000 (20NHG000B)	Bussmann	India	20A	500V	120kA	DIN Blade	Each	3
689149	32A NH000 (32NHG000B)	Bussmann	India	32A	500V	120kA	DIN Blade	Each	3
689238	40A NH000 (40NHG000B)	Bussmann	India	40A	500V	120kA	DIN Blade	Each	3
689165	50A NH000 (50NHG000B)	Bussmann	India	50A	500V	120kA	DIN Blade	Each	3
689173	63A NH000 (63NHG000B)	Bussmann	India	63A	500V	120kA	DIN Blade	Each	3
689181	80A NH000 (80NHG000B)	Bussmann	India	80A	500V	120kA	DIN Blade	Each	3
689203	100A NH000 (100NHG000B)	Bussmann	India	100A	500V	120kA	DIN Blade	Each	3
NH00 DIN HRC Fuselinks									
689211	125A NH00 (125NHG00B)	Bussmann	India	125A	500V	120kA	DIN Blade	Each	3
689491	160A NH00 (160NHG00B)	Bussmann	India	160A	500V	120kA	DIN Blade	Each	3

Fuses on this page comply to IEC 60269, DIN 43620 & VDE 0636 Standards

COOPER BUSSMANN HRC DIN Blade Fuselinks

NHO



NH1

NHO & NH1 DIN FUSES (CLASS gG)

Part Number	Description	Brand	Origin	Amps	Volts (AC)	Break Capacity	Configuration	Unit	Box Qty
NHO DIN HRC Fuselinks									
665290	10A NHO (16NHG0B)	Bussmann	India	10A	500V	120kA	Blade Type	Each	3
689378	16A NHO (16NHG0B)	Bussmann	India	16A	500V	120kA	Blade Type	Each	3
689831	20A NHO (20NHG0B)	Bussmann	India	20A	500V	120kA	Blade Type	Each	3
688576	25A NHO (25NHG0B)	Bussmann	India	25A	500V	120kA	Blade Type	Each	3
693162	32A NHO (32NHG0B)	Bussmann	India	32A	500V	120kA	Blade Type	Each	3
689963	40A NHO (40NHG0B)	Bussmann	India	40A	500V	120kA	Blade Type	Each	3
689858	50A NHO (50NHG0B)	Bussmann	India	50A	500V	120kA	Blade Type	Each	3
689319	63A NHO (63NHG0B)	Bussmann	India	63A	500V	120kA	Blade Type	Each	3
689335	100A NHO (100NHG0B)	Bussmann	India	100A	500V	120kA	Blade Type	Each	3
689343	125A NHO (125NHG0B)	Bussmann	India	125A	500V	120kA	Blade Type	Each	3
689351	160A NHO (160NHG0B)	Bussmann	India	160A	500V	120kA	Blade Type	Each	3
NH1 DIN HRC Fuselinks									
689866	16A NH1 (16NHG01B)	Bussmann	India	16A	500V	120kA	Blade Type	Each	3
689688	20A NH1 (20NHG01B)	Bussmann	India	20A	500V	120kA	Blade Type	Each	3
689432	25A NH1 (25NHG01B)	Bussmann	India	25A	500V	120kA	Blade Type	Each	3
692530	32A NH1 (32NHG01B)	Bussmann	India	32A	500V	120kA	Blade Type	Each	3
686700	40A NH1 (40NHG01B)	Bussmann	India	40A	500V	120kA	Blade Type	Each	3
689416	50A NH1 (50NHG01B)	Bussmann	India	50A	500V	120kA	Blade Type	Each	3
689424	63A NH1 (63NHG01B)	Bussmann	India	63A	500V	120kA	Blade Type	Each	3
689084	80A NH1 (80NHG01B)	Bussmann	India	80A	500V	120kA	Blade Type	Each	3
689440	100A NH1 (100NHG01B)	Bussmann	India	100A	500V	120kA	Blade Type	Each	3
689459	125A NH1 (125NHG01B)	Bussmann	India	125A	500V	120kA	Blade Type	Each	3
689467	160A NH1 (160NHG01B)	Bussmann	India	160A	500V	120kA	Blade Type	Each	3
689475	200A NH1 (200NHG1B)	Bussmann	India	200A	500V	120kA	Blade Type	Each	3
661066	224A NH1 (224NHG1B)	Bussmann	India	224A	500V	120kA	Blade Type	Each	3
689939	250A NH1 (250NHG1B)	Bussmann	India	250A	500V	120kA	Blade Type	Each	3

Fuses on this page comply to IEC 60269, DIN 43620 & VDE 0636 Standards

WEB nzinsulators.co.nz • HQ & FACTORY Thomas Street, PO Box 5, Temuka



NH2



NH3

NH2 & NH3 DIN FUSES (CLASS gG)

Part Number	Description	Brand	Origin	Amps	Volts (AC)	Break Capacity	Configuration	Unit	Box Qty
NH2 DIN HRC Fuselinks									
686735	50A NH2 (50NHG02B)	Bussmann	India	50A	500V	120kA	Blade Type	Each	3
689548	63A NH2 (63NHG02B)	Bussmann	India	63A	500V	120kA	Blade Type	Each	3
689998	80A NH2 (80NHG02B)	Bussmann	India	80A	500V	120kA	Blade Type	Each	3
689882	100A NH2 (100NHG02B)	Bussmann	India	100A	500V	120kA	Blade Type	Each	3
689564	125A NH2 (125NHG02B)	Bussmann	India	125A	500V	120kA	Blade Type	Each	3
689572	160A NH2 (160NHG02B)	Bussmann	India	160A	500V	120kA	Blade Type	Each	3
689580	200A NH2 (200NHG02B)	Bussmann	India	200A	500V	120kA	Blade Type	Each	3
685860	224A NH2 (224NHG02B)	Bussmann	India	224A	500V	120kA	Blade Type	Each	3
689890	250A NH2 (250NHG02B)	Bussmann	India	250A	500V	120kA	Blade Type	Each	3
689610	315A NH2 (315NHG2B)	Bussmann	India	315A	500V	120kA	Blade Type	Each	3
689629	355A NH2 (355NHG2B)	Bussmann	India	355A	500V	120kA	Blade Type	Each	3
689637	400A NH2 (400NHG2B)	Bussmann	India	400A	500V	120kA	Blade Type	Each	3
NH3 DIN HRC Fuselinks									
689645	315A NH3 (315NHG03B)	Bussmann	India	315A	500V	120kA	Blade Type	Each	3
689556	355A NH3 (355NHG03B)	Bussmann	India	355A	500V	120kA	Blade Type	Each	3
689599	400A NH3 (400NHG03B)	Bussmann	India	400A	500V	120kA	Blade Type	Each	3
689696	500A NH3 (500NHG3B)	Bussmann	India	500A	500V	120kA	Blade Type	Each	3
689718	630A NH3 (630NHG3B)	Bussmann	India	630A	500V	120kA	Blade Type	Each	3

Fuses on this page comply to IEC 60269, DIN 43620 & VDE 0636 Standards



C10G10 10x38

CYLINDRICAL 10x38 FUSELINKS (CLASS gG)

Part Number	Description	Brand	Origin	Amps	Volts	Break Capacity	Configuration	Standard	Unit	Box Qty
Cylindrical 10x38 HRC Fuselinks										
654574	1A 10x38 Fuse (C10G1)	Bussmann	India	1A	500V	120kA	10x38mm Cylinder	IEC 60269	Each	10
654299	2A 10x38 Fuse (C10G2)	Bussmann	India	2A	500V	120kA	10x38mm Cylinder	IEC 60269	Each	10
654388	4A 10x38 Fuse (C10G4)	Bussmann	India	4A	500V	120kA	10x38mm Cylinder	IEC 60269	Each	10
654302	6A 10x38 Fuse (C10G6)	Bussmann	India	6A	500V	120kA	10x38mm Cylinder	IEC 60269	Each	10
654310	10A 10x38 Fuse (C10G10)	Bussmann	India	10A	500V	120kA	10x38mm Cylinder	IEC 60269	Each	10
654329	16A 10x38 Fuse (C10G16)	Bussmann	India	16A	500V	120kA	10x38mm Cylinder	IEC 60269	Each	10
654337	20A 10x38 Fuse (C10G20)	Bussmann	India	20A	500V	120kA	10x38mm Cylinder	IEC 60269	Each	10
654353	25A 10x38 Fuse (C10G25)	Bussmann	India	25A	500V	120kA	10x38mm Cylinder	IEC 60269	Each	10
654345	32A 10x38 Fuse (C10G32)	Bussmann	India	32A	500V	120kA	10x38mm Cylinder	IEC 60269	Each	10
Fuseholder for 10x38 Fuses										
666858	CHM1D Fuseholder	Bussmann	China	32A	690V	120kA	10x38mm Cylinder	IEC 60269/60947	Each	12



Ferrule



KR85 House Service

KR85 HOUSE SERVICE FUSELINKS (CLASS gG)

Part Number	Description	Brand	Origin	Amps	Volts	Break Capacity	Configuration	Standard	Unit	Box Qty
KR85 HRC House Service Fuses										
647802	5A (5KR85)	Bussmann	India	5A	415V	33kA	22x57mm Ferrule	BS1361	Each	20
647810	10A (10KR85)	Bussmann	India	10A	415V	33kA	22x57mm Ferrule	BS1361	Each	20
647829	15A (15KR85)	Bussmann	India	15A	415V	33kA	22x57mm Ferrule	BS1361	Each	20
647837	20A (20KR85)	Bussmann	India	20A	415V	33kA	22x57mm Ferrule	BS1361	Each	20
647845	25A (25KR85)	Bussman	India	25A	415V	33kA	22x57mm Ferrule	BS1361	Each	20
647853	30A (30KR85)	Bussmann	India	30A	415V	33kA	22x57mm Ferrule	BS1361	Each	20
647861	40A (40KR85)	Bussmann	India	40A	415V	33kA	22x57mm Ferrule	BS1361	Each	20
647888	45A (45KR85)	Bussmann	India	45A	415V	33kA	22x57mm Ferrule	BS1361	Each	20
647896	50A (50KR85)	Bussmann	India	50A	415V	33kA	22x57mm Ferrule	BS1361	Each	20
647918	60A (60KR85)	Bussmann	India	60A	415V	33kA	22x57mm Ferrule	BS1361	Each	20
647926	80A (80KR85)	Bussmann	India	80A	415V	33kA	22x57mm Ferrule	BS1361	Each	20
647934	100A (100KR85)	Bussmann	India	100A	415V	33kA	22x57mm Ferrule	BS1361	Each	20



76mm Centre



300-1 Carrier for 76mm



82mm Centre

76 & 82MM J-TYPE FUSELINKS & CARRIERS

Part Number	Description	Brand	Origin	Amps	Volts	Fixing Centre	Break Capacity	Standard	Unit	Box Qty
76mm Centre J-Type Fuselinks										
647233	63A 76mm (63MJ25-6)	Bussmann	India	63A	415V	76mm	80kA	IEC 60269-1	Each	5
647268	100A 76mm (100MJ25-6)	Bussmann	India	100A	415V	76mm	80kA	IEC 60269-1	Each	5
647276	125A 76mm (125MJ25-6)	Bussmann	India	125A	415V	76mm	80kA	IEC 60269-1	Each	5
647284	160A 76mm (160MJ25-6)	Bussmann	India	160A	415V	76mm	80kA	IEC 60269-1	Each	5
647292	200A 76mm (200MJ25-6)	Bussmann	India	200A	415V	76mm	80kA	IEC 60269-1	Each	5
647306	250A 76mm (250MJ25-6)	Bussmann	India	250A	415V	76mm	80kA	IEC 60269-1	Each	5

Part Number	Description	Brand	Origin	Amps	Colour	Construction	Standard	Unit	Weight	Box Qty
Carrier for J-Type 76mm Fuses										
468622	NZI 300-1 Shrouded Carrier	NZI	NZ	200A	White	Porcelain & ETPNFM	AS/NZS 3947	Each	600g	1
470732	NZI 300-8 Base Only	NZI	NZ	200A		Formica & ETPNFM	AS/NZS 3947	Each	700g	1

Part Number	Description	Brand	Origin	Amps	Volts	Fixing Centre	Break Capacity	Standard	Unit	Box Qty
82mm Centre J-Type Fuselinks										
647373	32A 82mm (32MJ30-8)	Bussmann	India	32A	415V	82mm	80kA	IEC 60269-1	Each	5
647381	40A 82mm (40MJ30-8)	Bussmann	India	40A	415V	82mm	80kA	IEC 60269-1	Each	5
647403	63A 82mm (63MJ30-8)	Bussmann	India	63A	415V	82mm	80kA	IEC 60269-1	Each	5
647411	80A 82mm (80MJ30-7)	Bussmann	India	80A	415V	82mm	80kA	IEC 60269-1	Each	5
647438	100A 82mm (100MJ30-7)	Bussmann	India	100A	415V	82mm	80kA	IEC 60269-1	Each	5
647446	125A 82mm (125MJ30-7)	Bussmann	India	125A	415V	82mm	80kA	IEC 60269-1	Each	5
647454	160A 82mm (160MJ30-7)	Bussmann	India	160A	415V	82mm	80kA	IEC 60269-1	Each	5
647462	200A 82mm (200MJ30-7)	Bussmann	India	200A	415V	82mm	80kA	IEC 60269-1	Each	5
647470	250A 82mm (250MJ30-7)	Bussmann	India	250A	415V	82mm	80kA	IEC 60269-1	Each	5
647489	315A 82mm (315MJ30-7)	Bussmann	India	315A	415V	82mm	80kA	IEC 60269-1	Each	5
647659	355A 82mm (355PJ30-7)	Bussmann	India	355A	415V	82mm	80kA	IEC 60269-1	Each	5
647667	400A 82mm (400PJ30-7)	Bussmann	India	400A	415V	82mm	80kA	IEC 60269-1	Each	5



Outdoor Wedge
for 82mm Centre



92mm Centre

82 & 92MM J-TYPE FUSELINKS & CARRIERS

Part Number	Description	Brand	Origin	Amps	Colour	Construction	Standard	Unit	Weight	Box Qty
Carrier for J-Type 82mm Fuses										
468592	NZI 325-5 Unshrouded Carrier	NZI	NZ	400A	Grey	Porcelain & ETPNFM	AS/NZS 3947	Each	900g	1
468614	NZI 325-7 Shrouded Carrier	NZI	NZ	400A	White	Porcelain & ETPNFM	AS/NZS 3947	Each	1.1kg	1
469726	NZI 325 Slotted Shorting Link	NZI	NZ	400A		Copper ETP	AS/NZS 3947	Each	110g	1
469858	NZI 325-8 Base Only	NZI	NZ	400A		Formica & ETPNFM	AS/NZS 3947	Each	1.2kg	1
468657	NZI 3.25" Outdoor Wedge Complete	NZI	NZ	400A	Grey	Porcelain & ETPNFM	AS/NZS 3947	Each	5.1kg	1

Part Number	Description	Brand	Origin	Amps	Volts	Fixing Centre	Break Capacity	Standard	Unit	Box Qty
92mm Centre J-Type Fuselinks										
658650	32A 92mm (32MJ31-8)	Bussmann	India	32A	415V	92mm	80kA	IEC 60269-1	Each	5
647535	40A 92mm (40MJ31-8)	Bussmann	India	40A	415V	92mm	80kA	IEC 60269-1	Each	5
647543	63A 92mm (63MJ31-8)	Bussmann	India	63A	415V	92mm	80kA	IEC 60269-1	Each	5
647551	80A 92mm (80MJ31-7)	Bussmann	India	80A	415V	92mm	80kA	IEC 60269-1	Each	5
647578	100A 92mm (100MJ31-7)	Bussmann	India	100A	415V	92mm	80kA	IEC 60269-1	Each	5
647586	125A 92mm (125MJ31-7)	Bussmann	India	125A	415V	92mm	80kA	IEC 60269-1	Each	5
647594	160A 92mm (160MJ31-7)	Bussmann	India	160A	415V	92mm	80kA	IEC 60269-1	Each	5
647608	200A 92mm (200MJ31-7)	Bussmann	India	200A	415V	92mm	80kA	IEC 60269-1	Each	5
647616	250A 92mm (250MJ31-7)	Bussmann	India	250A	415V	92mm	80kA	IEC 60269-1	Each	5
647624	315A 92mm (315MJ31-7)	Bussmann	India	315A	415V	92mm	80kA	IEC 60269-1	Each	5
647675	355A 92mm (355PJ31-7)	Bussmann	India	355A	415V	92mm	80kA	IEC 60269-1	Each	5
647683	400A 92mm (400PJ31-7)	Bussmann	India	400A	415V	92mm	80kA	IEC 60269-1	Each	5
658782	450A 92mm (450RJ31-7)	Bussmann	India	450A	415V	92mm	80kA	IEC 60269-1	Each	5
647756	500A 92mm (500RJ31-7)	Bussmann	India	500A	415V	92mm	80kA	IEC 60269-1	Each	5
658804	560A 92mm (560SJ31-6)	Bussmann	India	560A	415V	92mm	80kA	IEC 60269-1	Each	5
647772	630A 92mm (630SJ31-6)	Bussmann	India	630A	415V	92mm	80kA	IEC 60269-1	Each	5

Part Number	Description	Brand	Origin	Amps	Colour	Construction	Standard	Unit	Weight	Box Qty
Carrier for J-Type 92mm Fuses										
471011	NZI 3625-7 Shrouded Carrier	NZI	NZ	600A	White	Porcelain & ETPNFM	AS/NZS 3947	Each	1.5kg	1



MV Air



Air Ferrule

WEATHER-SEALED MV FUSELINKS FOR USE IN AIR

Part Number	Description	Brand	Origin	Amps	Volts	Break Capacity	Dimensions	Configuration	Unit	Box Qty
MV Fuses for use in Air*										
671142	6.3A Air (12BDGHA6.3)	Bussmann	UK	6.3A	12kV	40kA	359Lx51Dmm	Ferrule*	Each	3
670154	10A Air (12BDGHA10)	Bussmann	UK	10A	12kV	40kA	359Lx51Dmm	Ferrule*	Each	3
671150	16A Air (12BDGHA16)	Bussmann	UK	16A	12kV	40kA	359Lx51Dmm	Ferrule*	Each	3
671169	20A Air (12BDGHA20)	Bussmann	UK	20A	12kV	40kA	359Lx51Dmm	Ferrule*	Each	3
671371	25A Air (12BDGHA25)	Bussmann	UK	25A	12kV	40kA	359Lx51Dmm	Ferrule*	Each	3
670375	31.5A Air (12BDGHA31.5)	Bussmann	UK	31.5A	12kV	40kA	359Lx51Dmm	Ferrule*	Each	3
671177	40A Air (12BDGHA40)	Bussmann	UK	40A	12kV	40kA	359Lx51Dmm	Ferrule*	Each	3
671185	50A Air (12BDGHA50)	Bussmann	UK	50A	12kV	40kA	359Lx51Dmm	Ferrule*	Each	3
671398	56A Air (12BFGHA56)	Bussmann	UK	56A	12kV	40kA	359Lx76Dmm	Ferrule*	Each	3
671401	63A Air (12BFGHA63)	Bussmann	UK	63A	12kV	40kA	359Lx76Dmm	Ferrule*	Each	3
671193	80A Air (12BFGHA80)	Bussmann	UK	80A	12kV	40kA	359Lx76Dmm	Ferrule*	Each	3
670685	90A Air (12BFGHA90)	Bussmann	UK	90A	12kV	40kA	359Lx76Dmm	Ferrule*	Each	3
671207	100A Air (12BFGHA100)	Bussmann	UK	100A	12kV	40kA	359Lx76Dmm	Ferrule*	Each	3
671215	125A Air (12AKGHA125)	Bussmann	UK	125A	12kV	40kA	359Lx76Dmm	Ferrule*	Each	3

Fuses on this page comply to BS 2692-1 Standard

* Also available with BS TAB bolted tags





MV Oil



Oil Ferrule

MV FUSELINKS FOR USE IN OIL SWITCHGEAR

Part Number	Description	Brand	Origin	Amps	Volts	Break Capacity	Dimensions	Configuration	Unit	Box Qty
MV Fuses for use in Oil										
670251	6.3A Oil (12OEFMA6.3)	Bussmann	India	6.3A	12kV	40kA	254Lx63.5Dmm	Ferrule	Each	3
670243	10A Oil (12OEFMA10)	Bussmann	India	10A	12kV	40kA	254Lx63.5Dmm	Ferrule	Each	3
670278	16A Oil (12OEFMA16)	Bussmann	India	16A	12kV	40kA	254Lx63.5Dmm	Ferrule	Each	3
670286	20A Oil (12OEFMA20)	Bussmann	India	20A	12kV	40kA	254Lx63.5Dmm	Ferrule	Each	3
670065	25A Oil (12OEFMA25)	Bussmann	India	25A	12kV	40kA	254Lx63.5Dmm	Ferrule	Each	3
670073	31.5A Oil (12OEFMA31.5)	Bussmann	India	31.5A	12kV	40kA	254Lx63.5Dmm	Ferrule	Each	3
670081	40A Oil (12OEFMA40)	Bussmann	India	40A	12kV	40kA	254Lx63.5Dmm	Ferrule	Each	3
670006	50A Oil (12OEFMA50)	Bussmann	India	50A	12kV	40kA	254Lx63.5Dmm	Ferrule	Each	3
670014	63A Oil (12OEFMA63)	Bussmann	India	63A	12kV	40kA	254Lx63.5Dmm	Ferrule	Each	3
670111	71A Oil (12OHFMA71)	Bussmann	India	71A	12kV	40kA	254Lx63.5Dmm	Ferrule	Each	3
670138	80A Oil (12OHFMA80)	Bussmann	India	80A	12kV	40kA	254Lx63.5Dmm	Ferrule	Each	3
671118	90A Oil (12OHFMA90)	Bussmann	India	90A	12kV	40kA	254Lx63.5Dmm	Ferrule	Each	3
670537	100A Oil (12OHFMA100)	Bussmann	India	100A	12kV	40kA	254Lx63.5Dmm	Ferrule	Each	3
671126	125A Oil (12OLGMA125)	Bussmann	India	125A	12kV	40kA	359Lx63.5Dmm	Ferrule	Each	3
671134	160A Oil (12OLGMA160)	Bussmann	India	160A	12kV	40kA	359Lx63.5Dmm	Ferrule	Each	3

Fuses on this page comply to IEC 60282-1 & BS 2692-1 Standards



MV Back Up



Back Up Ferrule

WEATHER-SEALED MV BACK UP FUSELINKS

Part Number	Description	Brand	Origin	Amps	Volts	Break Capacity	Dimensions	Configuration	Unit	Box Qty
MV DIN Fuse Links – Back Up										
671223	6.3A Back Up (12TDLEJ6.3)	Bussmann	India	6.3A	12kV	63kA	292Lx51Dmm	Ferrule	Each	3
671231	10A Back Up (12TDLEJ10)	Bussmann	India	10A	12kV	63kA	292Lx51Dmm	Ferrule	Each	3
671258	16A Back Up (12TDLEJ16)	Bussmann	India	16A	12kV	63kA	292Lx51Dmm	Ferrule	Each	3
671266	20A Back Up (12TDLEJ20)	Bussmann	India	20A	12kV	63kA	292Lx51Dmm	Ferrule	Each	3
671274	25A Back Up (12TDLEJ25)	Bussmann	India	25A	12kV	63kA	292Lx51Dmm	Ferrule	Each	3
671282	31.5A Back Up (12TDLEJ31.5)	Bussmann	India	31.5A	12kV	63kA	292Lx51Dmm	Ferrule	Each	3
671290	40A Back Up (12TDLEJ40)	Bussmann	India	40A	12kV	63kA	292Lx51Dmm	Ferrule	Each	3
671304	50A Back Up (12TDLEJ50)	Bussmann	India	50A	12kV	63kA	292Lx51Dmm	Ferrule	Each	3
671312	63A Back Up (12TDLEJ63)	Bussmann	India	63A	12kV	63kA	292Lx51Dmm	Ferrule	Each	3
671320	80A Back Up (12THLEJ80)	Bussmann	India	80A	12kV	63kA	292Lx67Dmm	Ferrule	Each	3
671339	100A Back Up (12THLEJ100)	Bussmann	India	100A	12kV	63kA	292Lx67Dmm	Ferrule	Each	3
671347	125A Back Up (12TKLEJ125)	Bussmann	India	125A	12kV	63kA	292Lx76Dmm	Ferrule	Each	3
671355	160A Back Up (12TXLEJ160)	Bussmann	India	160A	12kV	63kA	292Lx88Dmm	Ferrule	Each	3
671363	200A Back Up (12TXLEJ200)	Bussmann	India	200A	12kV	63kA	292Lx88Dmm	Ferrule	Each	3

Fuses on this page comply to IEC 60282-4 & DIN 43265 Standards





MV Full Range

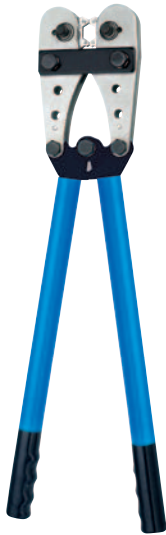


Full Range Ferrule

MV FULL RANGE FUSELINKS

Part Number	Description	Brand	Origin	Amps	Volts	Break Capacity	Dimensions	Configuration	Unit	Box Qty
MV DIN Fuse Links – Full Range										
670545	6.3A Full Range (12FDLSJ6.3)	Bussmann	UK	6.3A	12kV	50kA	292Lx51Dmm	Ferrule	Each	3
670553	10A Full Range (12FDLSJ10)	Bussmann	UK	10A	12kV	50kA	292Lx51Dmm	Ferrule	Each	3
670642	16A Full Range (12FDLSJ16)	Bussmann	UK	16A	12kV	50kA	292Lx51Dmm	Ferrule	Each	3
670502	20A Full Range (12FDLSJ20)	Bussmann	UK	20A	12kV	50kA	292Lx51Dmm	Ferrule	Each	3
671010	25A Full Range (12FDLSJ25)	Bussmann	UK	25A	12kV	50kA	292Lx51Dmm	Ferrule	Each	3
670499	31.5A Full Range (12FDLSJ31.5)	Bussmann	UK	31.5A	12kV	50kA	292Lx51Dmm	Ferrule	Each	3
670030	40A Full Range (12FFLSJ40)	Bussmann	UK	40A	12kV	50kA	292Lx76Dmm	Ferrule	Each	3
670510	50A Full Range (12FFLSJ50)	Bussmann	UK	50A	12kV	50kA	292Lx76Dmm	Ferrule	Each	3
670049	63A Full Range (12FFLSJ63)	Bussmann	UK	63A	12kV	50kA	292Lx76Dmm	Ferrule	Each	3
670057	80A Full Range (12FXLSJ80)	Bussmann	UK	80A	12kV	50kA	292Lx88Dmm	Ferrule	Each	3
670529	100A Full Range (12FXLSJ100)	Bussmann	UK	100A	12kV	50kA	292Lx88Dmm	Ferrule	Each	3

Fuses on this page comply to IEC 60282-4 & DIN 43265 Standards



SF-37



SF-13



SG-10



HPS-130-HC

SOFAMEL OVERHEAD SAFETY EQUIPMENT

Part Number	Description	Brand	Origin	Detail	Unit	Weight
Cable Cutters & Crimping Tools						
525383	SF-31 Cable Cutter	Sofamel	Spain	For copper/Aluminium up to 50mm ²	Each	540g
525375	SF-13 Ratchet Cable Cutter	Sofamel	Spain	For copper/Aluminium up to 40mm ²	Each	1.0kg
528072	SF-50 Ratchet Cable Cutter	Sofamel	Spain	For copper/Aluminium up to 40mm ²	Each	750g
525367	SF-37 Manual Crimping Tool	Sofamel	Spain	Hex compression, 6-120mm ² cable lugs	Each	4.0kg
528080	HPS-130-H3 Hydraulic Crimping Tool	Sofamel	Spain	H head, crimp to 130kN, c/w briefcase	Each	7.7kg
528099	API-130-H Electro-Hydraulic Crimping Tool	Sofamel	Spain	H head, crimp to 130kN, c/w batt & briefcase	Each	9.0kg
Dielectric Latex Safety Gloves						
525189	SG-25 T9 Class 00 LV Safety Gloves	Sofamel	Spain	Size 9	Pair	180g
525197	SG-25 T10 Class 00 LV Safety Gloves	Sofamel	Spain	Size 10	Pair	200g
525162	SG-10 T9 Class 1 HV Safety Gloves	Sofamel	Spain	Size 9	Pair	440g
525107	SG-20 T10 Class 2 HV Safety Gloves	Sofamel	Spain	Size 10	Pair	590g
525145	SG-36 Glove Bag	Sofamel	Spain	With Belt Clip	Each	100g
Ancillary Items						
525111	ADAP-M10-A-K Adaptor	Sofamel	Spain	M10 to Universal K	Each	100g



SOFAMEL OVERHEAD SAFETY EQUIPMENT

Part Number	Description	Brand	Origin	Detail	Colour	Complies With	Unit	Weight
MV Voltage Detectors – Optical & Acoustic								
525073	VT-5/36-P (complete with Pole)	Sofamel	Spain	5-36kV	White		Each	1.7kg
525006	VT-5/36-U (no Pole)	Sofamel	Spain	5-36kV	Blue		Each	730g
525103	VT-11/33-U (no Pole)	Sofamel	Spain	11-33kV	Red	IEC 61243	Each	750g
Insulating Poles – Indoor & Humid Outdoor								
525081	BME-45 1.6m Pole (3 Hoods)	Sofamel	Spain	Max 45kV	Yellow		Each	1.6kg
525022	BSC-A43U 3.5m Pole (Universal Head)	Sofamel	Spain	Max 132kV	Red	IEC 60855	Each	4.0kg
Earthing Kits – Medium Voltage								
525065	PATC-MPUB/2525 Earthing Kit Clamp, Cable, Connector, Lathe, Pole, Case	Sofamel	Spain	6.9kA/1s		IEC 61230	Each	12.0kg
Earthing Kits – High Voltage								
525030	PATL-TML/07006 Earthing Kit (70mm ² , 6m) TML Clamps, Cables, Lathes, Bags (3 of each)	Sofamel	Spain	19kA/1s		IEC 61230	Each	27.0kg
525057	PATC-TMC/07006 Earthing Kit (70mm ² , 6m) TMC Clamps, Cables, Lathes, Bags (3 of each)	Sofamel	Spain	19kA/1s		IEC 61230	Each	21.5kg



Busbar Support



DMC Standoff



DMC Top View



FB-19/044



FC-19/064



FD-19/038

BUSBAR SUPPORT, DMC STANDOFFS & FASTLUG CONNECTORS

Part Number	Description	Brand	Origin	Volts	Colour	Bolt	Construction	Complies With	Unit	Weight	Box Qty
Porcelain Busbar Support											
186112	NZI Busbar Support Complete	NZI	NZ	3kV	White	M10	Porcelain & ETPNFM	IEC 60168	Each	215g	12

Part Number	Description	Brand	Origin	Volts	Colour	Height	Construction	Complies With	Unit	Weight	Box Qty
M10 DMC Standoffs											
515299	NZI 6/35/M10 DMC Standoff	NZI	NZ	1.5kV	Grey	35mm	DMC & Z/P Steel	IEC 60660	Each	90g	12
515329	NZI 6/38/M10 DMC Standoff	NZI	NZ	1.5kV	Grey	38mm	DMC & Z/P Steel	IEC 60660	Each	105g	12
515353	NZI 6/45/M10 DMC Standoff	NZI	NZ	1.5kV	Grey	45mm	DMC & Z/P Steel	IEC 60660	Each	130g	12
514772	NZI 6/50/M10 DMC Standoff	NZI	NZ	1.5kV	Grey	50mm	DMC & Z/P Steel	IEC 60660	Each	150g	12
M8 DMC Standoffs											
515191	NZI 6/35/M8 DMC Standoff	NZI	NZ	1.5kV	Grey	35mm	DMC & Z/P Steel	IEC 60660	Each	95g	12
515221	NZI 6/38/M8 DMC Standoff	NZI	NZ	1.5kV	Grey	38mm	DMC & Z/P Steel	IEC 60660	Each	110g	12
515264	NZI 6/45/M8 DMC Standoff	NZI	NZ	1.5kV	Grey	45mm	DMC & Z/P Steel	IEC 60660	Each	135g	12
514705	NZI 6/50/M8 DMC Standoff	NZI	NZ	1.5kV	Grey	50mm	DMC & Z/P Steel	IEC 60660	Each	155g	12

Part Number	Description	Brand	Origin	Cable Size	Construction	Complies With	Unit	Weight	Box Qty
Fastlug Connectors									
466824	FB-19/044 Connector	NZI	NZ	10-16mm ²	ETPNFM	AS/NZS 60998	Each	45g	10
466913	FC-19/064 Connector	NZI	NZ	25-35mm ²	ETPNFM	AS/NZS 60998	Each	95g	20
467022	FD-19/038 Connector	NZI	NZ	50-70mm ²	ETPNFM	AS/NZS 60998	Each	145g	10

**NEW ZEALAND INSULATORS LIMITED**

Established 1924

Customer Service for NZ & AUS

Phone +64-3-6878100

Office Hours 7.30am – 5.00pm Weekdays NZ Time

Email sales@nzinsulators.co.nz**Temuka Factory, HQ & South Island Warehouse**

Thomas Street, PO Box 5, Temuka 7948

Phone +64-3-6878100, Fax +64-3-6158125

Auckland Sales Office & North Island Warehouse

11 Wookey Lane, Kumeu 0891

Phone +64-9-4125941

NZI Brands NZI, Temuka Pottery, AX**Exclusive Distribution in NZ** DTR, NGK Stanger, Fulton Australia, Efen, Sofamel**Shared Distribution in NZ** Cooper Bussmann, Avon**Websites** nzinsulators.co.nz & temukapottery.co.nz**Timing**

This catalogue was released on Monday 16 January 2012 and all product changes are effective from that date.

Freight & Order Size

There is no minimum order. All orders exceeding \$500 excl GST are freight free New Zealand wide. Orders under \$500 are warmly welcomed, but we ask for a freight cost contribution, as per the most recent NZI Freight Rate Card – which is posted & updated on the home page of nzinsulators.co.nz. We do ask that whenever possible, orders be made in full-box multiples.

Terms of Trade

Transactions with New Zealand Insulators are made under overarching 'terms of trade' which can be downloaded from the home page of nzinsulators.co.nz.

Terms of Quotation

Quotes made by New Zealand Insulators are protected by overarching 'terms of quotation' which can be downloaded from the home page of nzinsulators.co.nz.

Copyright

This catalogue, all product images and the brands NZI, Temuka Pottery & AX are the intellectual property of New Zealand Insulators Limited.

Thank you for your business.



AX



NEW ZEALAND INSULATORS



TEMUKA

HQ & FACTORY
THOMAS STREET
PO BOX 5 TEMUKA 7948
T +64 3 6878100

AUCKLAND BRANCH
11 WOOKEY LANE
KUMEU 0891
T +64 9 4125941

W nzinsulators.co.nz