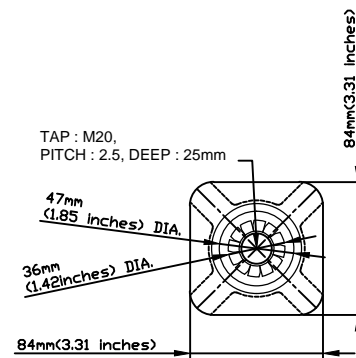
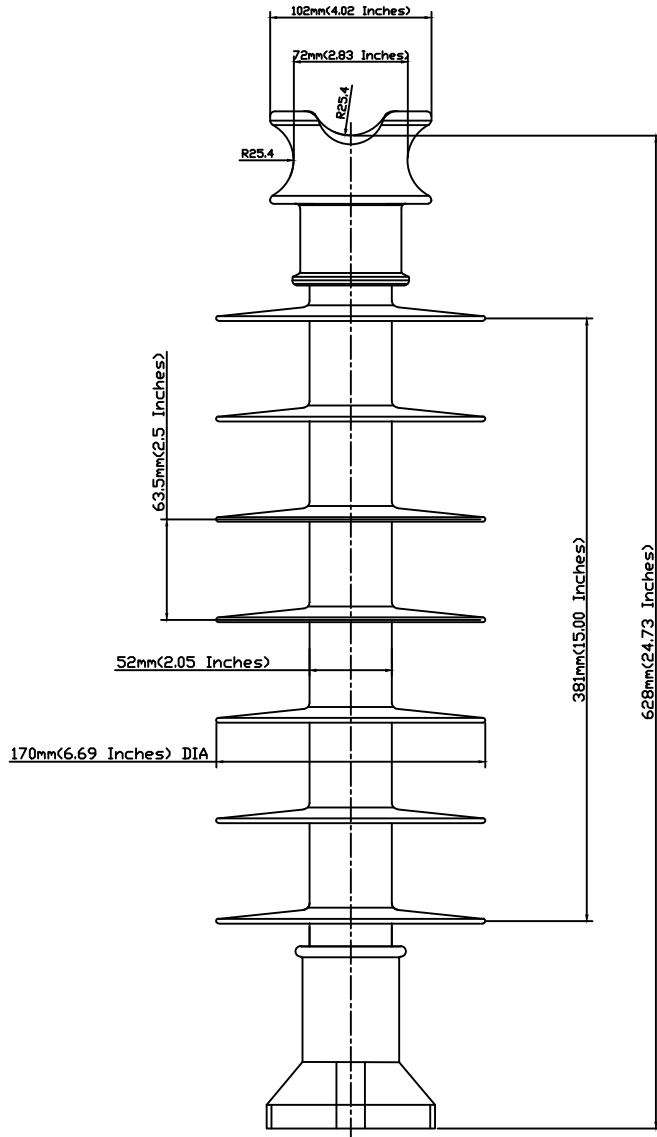


CATALOG NO. LPFN-46SK-M20

NO.	DESCRIPTION	DWG. NO.	MATERIAL	Q'TY	FINISH/SIZE	NOTE



NOTE:

1. TOP END FITTING IS MADE FROM GRAVITY CASTING ALUMINUM ALLOY & ANODIZED.
2. BASE END FITTING IS MADE FROM CARBON STEEL FORGED & GALVANIZED.
3. FIBERGLASS ROD IS MADE FROM EPOXY RESIN.
4. CLAMP AND STUD BASE DIMENSIONS ARE IN ACCORDANCE WITH ANSI C29.18.
5. THE DIA. OF FRP ROD IS 45mm(1.77inches) SOLID.
6. BASE AND INSULATOR ASSEMBLED WITH M20 BOLT AND WASHER.
7. THE TOLERANCE ON ALL DIMENSIONS SHALL BE AS FOLLOWS:

$\pm(0.04d+1.5)$ mm when $d<300$ mm

$\pm(0.025d+6)$ mm when $d>300$ mm with a maximum of 50mm

DIMENSIONS

LEAKAGE DISTANCE	1,195 mm(47.05 inches)
DRY ARCING DISTANCE	487 mm(19.17 inches)
SHEDS Q'TY	7 PCS

MECHANICAL VALUES

SPECIFIED CANTILEVER LOAD	2,450 LB
ROUTINE CANTILEVER LOAD	1,225 LB

ELECTRICAL VALUES

Low-Freq. FLASHOVER-DRY	188 kV
Low-Freq. FLASHOVER-WET	168 kV
IMPULSE FLASHOVER-POS	310 kV
IMPULSE FLASHOVER-NEG	376 kV

RADIO INFLUENCE VOLTAGE DATA

60 Hz TEST VOLTAGE	30 kV
MAXIMUM RIV @ 1,000kHz	200 uV

PACKING INFORMATION

NET WEIGHT EACH	14.0 kg
NO. IN STANDARD PACKAGE	4 PCS

NO.	DATE	REVISIONS	DESIGNED	APPROVED	REMARKS	DRAWN BY	DESIGNED BY	CHECKED BY	APPROVED BY	SCALE	DATE	NAME	LINE POST INSULATOR FOR TRANSMISSION	
3						J.H.PARK			C.H.PARK	1/1			E	
2						FEB.21.2017			FEB.21.2017					46kV TIE TOP F-NECK LP INSULATOR
1/R	02/21/2017	INITIAL RELEASE	J.H.PARK	C.H.PARK								REF.NO.		SHEET NO
												DWG.NO.	LPFN-46SK-M20	