



MV NETWORK UPDATE SEPTEMBER 2013

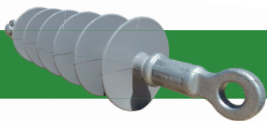
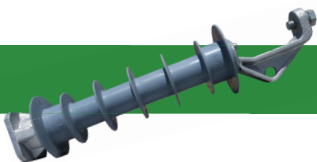
DTR Electric based near Busan in South Korea are acknowledged global leaders in the manufacture of polymeric deadend strains, line posts, surge arresters, station posts, suspension, standoffs & cutouts.



Established in South Korea over 30 years ago, DTR www.dtrelectric.co.kr is a global leader in the development and manufacture of polymeric insulators. DTR is extremely well-established and a highly respected brand of many New Zealand Networks.

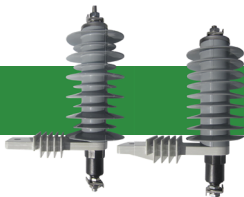
In 2011 New Zealand Insulators was appointed as exclusive NZ distributor of DTR.

POLYMER LINE POST
15kV, 25kV, 35kV, 46kV, 69kV



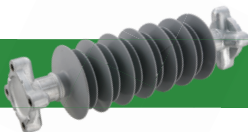
POLYMER STRAIN
15kV, 25kV, 35kV, 46kV, 69kV

SURGE ARRESTORS
10kA class 1 & 2 in 12kV, 15kV, 18kV



HV SUSPENSION STRAINS
115kV to 500kV

POLYMER STATION POST
15kV to 220kV



New Zealand Insulators has a full range of DTR product in stock, at both Kumeu & Temuka.

DTR products represent impeccable quality and competitive price so contact us now to discuss, get samples, and/or request a quote.

NEW ZEALAND INSULATORS



TEMUKA

North Island David Glackin 027-7460634
david.glackin@nzinsulators.co.nz

South Island Chris van der Werff 027-7066205
chris@nzinsulators.co.nz

Thomas St, PO Box 5, Temuka 7948

T 03-6878100 | F 03-6158125 | W nzinsulators.co.nz