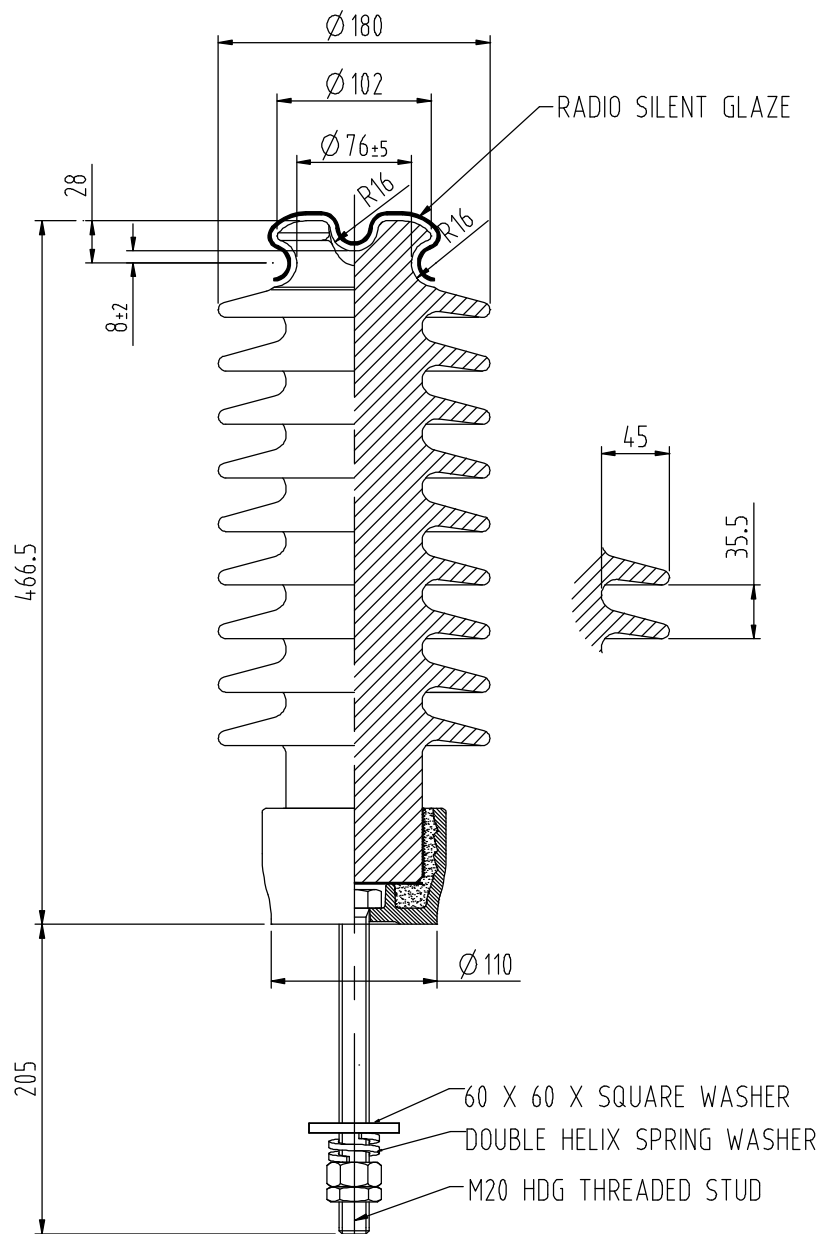


ALL DIMENSIONS IN MILLIMETRES - DO NOT SCALE - IF IN DOUBT PLEASE ASK



Technical Specification

	DESIGNED VALUES
<u>SYSTEM HIGHEST VOLTAGE</u>	36 kV
<u>WITHSTAND TEST VOLTAGES</u>	
a. Power frequency – wet (Vertical)	110 kV
b. Power frequency – wet (Horizontal)	120 kV
c. Power frequency – dry	130 kV
d. Lightning Impulse – dry (Calculated)	200 kV
<u>FLASHOVER TEST VOLTAGES</u>	
a. Power frequency – wet (Vertical)	120 kV
b. Power frequency – wet (Horizontal)	150 kV
c. Power frequency – dry	155 kV
<u>MINIMUM FAILING LOADS</u>	
a. Cantilever (Upright)	13.0 kN
<u>CREEPAGE DISTANCES</u>	
a. Total	955 mm
b. Protected	335 mm
c. Flashover	340 mm
Gross weight	13.6 kg

Issue	Mod. No.	Date
I	3485	11.1.13
H	3390	21.1.12
G	3363	31.11.11
E	3315	14.2.11
D	3207	31.5.07
C	3203	20.4.07

Drawn J. Bain
Date 20.04.2006

NEW ZEALAND INSULATORS



TEMUKA

NEW ZEALAND INSULATORS LTD
Tel: +64-3-687 8100
Fax: +64-3-615 8125
e-mail: sales@nzinsulators.co.nz



36kV TIE TOP LINE POST
FIXED LENGTH STUD TYPE

D632-0562/I