

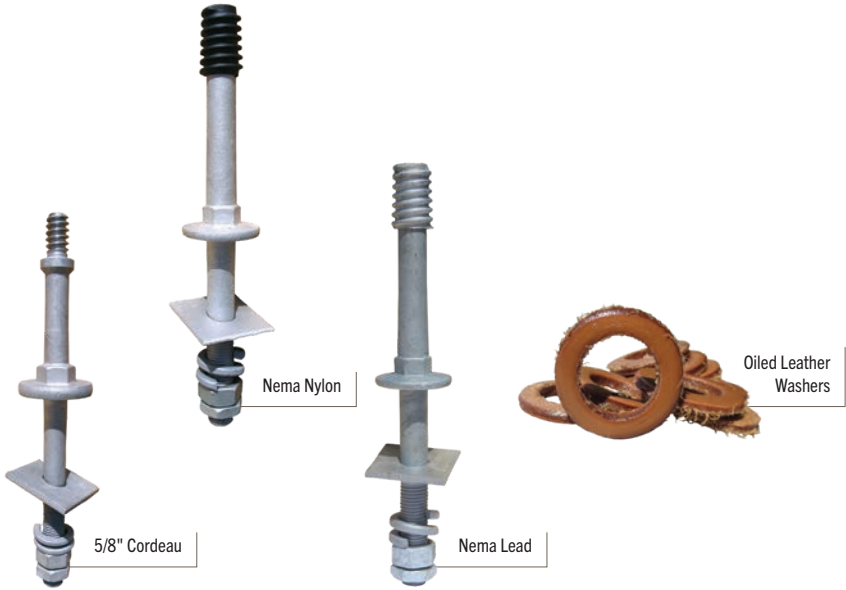
7.0

Overhead Line Hardware & Low Voltage Insulators



AX





Galvanised Steel Spindles & Washer for Pin-Type Insulators

Brand: AX | Unit: Each

| Part Number | Description | Origin | Length (mm) | Diameter | kN | Head | Thread | Weight | Box/Pallet | Drawing |
|-------------|-------------|--------|-------------|----------|----|------|--------|--------|------------|---------|
|-------------|-------------|--------|-------------|----------|----|------|--------|--------|------------|---------|

Spindle for 510 & 511

| | | | | | | | | | | |
|--------|-------------------------|-------|---------|-----|-----|-------|--------------|------|---------|-----------|
| 540358 | 5/8" Cordeau Steel Head | China | 118/147 | M16 | 3.3 | Steel | 5/8" Cordeau | 670g | 30/1200 | D374-2009 |
|--------|-------------------------|-------|---------|-----|-----|-------|--------------|------|---------|-----------|

Spindles for 1130W

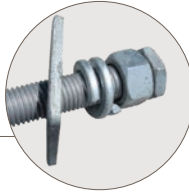
| | | | | | | | | | | |
|--------|--------------------|-------|---------|-----|---|-------|-------------|-------|--------|-----------|
| 536164 | Nema 1" Nylon Head | China | 152/146 | M20 | 6 | Nylon | 1 Inch SLHT | 1.0kg | 12/480 | D374-2134 |
| 536326 | Nema 1" Lead Head | China | 152/146 | M20 | 6 | Lead | 1 Inch SLHT | 1.1kg | 12/480 | D374-2118 |
| 541532 | Extended Lead Head | China | 185/135 | M20 | 6 | Lead | 1 Inch SLHT | 1.3kg | 12/480 | D374-2120 |

Washer for 510 & 511

| Part Number | Description | Origin | Detail | OD | Internal Diameter | Weight | Pack Qty |
|-------------|----------------|--------|---------------|------|-------------------|--------|----------|
| 540234 | Leather Washer | NZ | Oiled Leather | 23mm | 5/8" (15.9mm) | 1.2g | 90 |

AX Galvanised Steel Spindles

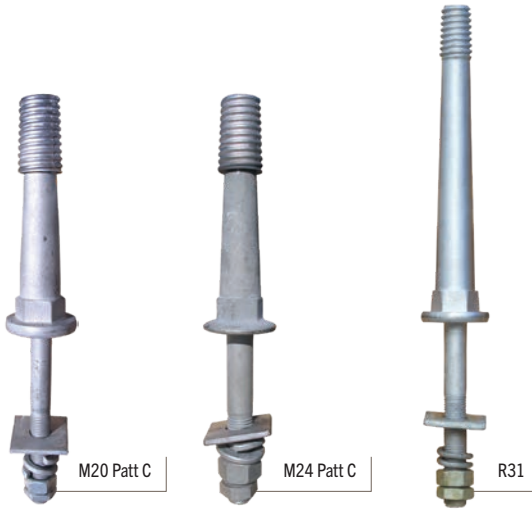
Stud Fittings:
Flat Washer + Helical Spring
Washer + Full Nut + Half Nut



Lead Head



7.2



Galvanised Steel Spindles for Pin-Type Insulators

Brand: AX | Unit: Each

| Part Number | Description | Origin | Length (mm) | Diameter | kN | Head | Thread | Weight | Box/Pallet | Drawing |
|---|-------------------------|--------|-------------|----------|----|-------|---------------------|--------|------------|-----------|
| Spindles for ALP22/450 | | | | | | | | | | |
| 538213 | M20 Pattern C Lead Head | China | 200/185 | M20 | 10 | Lead | Pattern C | 2.2kg | 6/240 | D374-2084 |
| 538205 | M24 Pattern C Lead Head | China | 200/185 | M24 | 11 | Lead | Pattern C | 2.4kg | 6/240 | D374-2085 |
| Spindle for 1540W, 3370, 33/920, 4490, 3372 & 4492 | | | | | | | | | | |
| 540463 | R31 Steel Head | China | 305/178 | M22 | 10 | Steel | BS Large Steel Head | 2.9kg | 6/288 | D374-2023 |



7.2

Clevis Thimbles

Brand: AX | Unit: Each

| Part Number | Description | Origin | kN | Length | Int Width | Loop | Weight | Box Qty | Drawing |
|------------------------|---------------------------|--------|----|--------|-----------|------|--------|---------|-------------|
| Clevis Thimbles | | | | | | | | | |
| 536342 | Aluminium Clevis Thimble | China | 70 | 132mm | 30mm | 57mm | 470g | 30 | D374-2140 |
| 536393 | Galv Steel Clevis Thimble | China | 70 | 146mm | 25mm | 57mm | 650g | 30 | D374-2142 |
| HDG Thimbles | | | | | | | | | |
| 536407 | 16mm Galv Thimble | NZ | | 90mm | 16mm | 60mm | 145g | 10 | D374-2150/A |
| 536601 | 19mm Galv Thimble | NZ | | 105mm | 16mm | 70mm | 145g | 10 | D374-2149/A |

AX Shackle Straps & U Shackles



7.2

Shackle Straps & U Shackles

Brand: AX | Origin: China | Unit: Each

| Part Number | Description | Length (mm) | Width (mm) | Thick (mm) | Holes (mm) | HDG | Weight | Box Qty | Drawing |
|-----------------------|---------------------------|-------------|------------|------------|------------|--------------|--------|---------|---------|
| Shackle Straps | | | | | | | | | |
| 556114 | Shackle Strap 7" | 180 | 32 | 3 | 14 | To 4680:2006 | 140g | 100 | AA20001 |
| 556122 | Shackle Strap #11 | 170 | 30 | 2 | 14 | To 4680:2006 | 85g | 200 | AA20009 |
| 556130 | Shackle Strap #8 Offset | 180 | 32 | 3 | 18 | To 4680:2006 | 130g | 100 | AA20011 |
| U Shackles | | | | | | | | | |
| 556149 | 210 U Shackle Small | 85 | 32 | 3 | 14 | To 4680:2006 | 160g | 100 | AA23001 |
| 556165 | 320 U Shackle Extra Large | 132 | 40 | 5 | 14 | To 4680:2006 | 500g | 30 | AA23003 |