

## AVON SHACKLES & NZI Reel BUNDLES



### SHACKLE STRAPS & U SHACKLES

Part Number	Description	Brand	Origin	Length (mm)	Width (mm)	Thick (mm)	Holes	HDG (mm)	Unit	Weight	Box Qty	Drawing
<b>Shackle Straps</b>												
537004	Avon AA20001 Shackle Strap 7"	Avon	NZ	180	32	3	14	To 4680:2006	Each	140g	100	AA20001
537012	Avon AA20009 Shackle Strap #11	Avon	NZ	170	30	2	14	To 4680:2006	Each	85g	200	AA20009
537020	Avon AA20011 Shackle Strap #8 Offset	Avon	NZ	180	32	3	18	To 4680:2006	Each	130g	100	AA20011
<b>U Shackles</b>												
537039	Avon AA23001 210 U Shackle Small	Avon	NZ	85	32	3	14	To 4680:2006	Each	160g	100	AA23001
537047	Avon AA23002 205 U Shackle Large	Avon	NZ	105	32	3	14	To 4680:2006	Each	210g	50	AA23002
537063	Avon AA23003 320 U Shackle Extra Large	Avon	NZ	132	40	5	14	To 4680:2006	Each	500g	30	AA23003

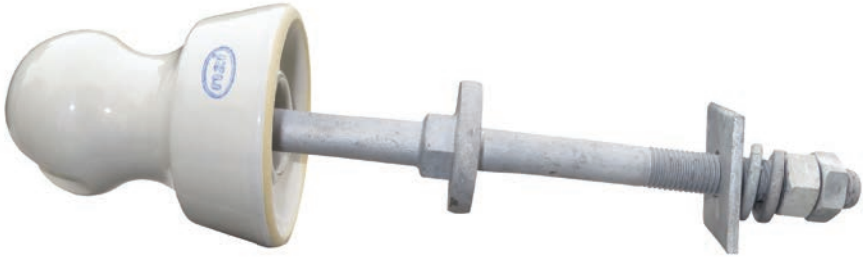
### PRE-ASSEMBLED REEL BUNDLES

Part Number	Description	Brands	Origin	Status	Unit	Weight	Box Qty
<b>Reel &amp; Shackle Strap Bundles</b>							
102148	NZI 210 Reel + Avon 7" Shackle Strap + 2 x M12 110 Bolt	NZI/Avon	NZ	Assembled	Bundle	750g	20
102180	NZI 205 Reel + Avon 7" Shackle Strap + 2 x M12 110 Bolt	NZI/Avon	NZ	Assembled	Bundle	1.1kg	10
<b>Reel &amp; U Shackle Bundles</b>							
102121	NZI 210 Reel + Avon Small U Shackle + M12 110 Bolt	NZI/Avon	NZ	Assembled	Bundle	550g	20
102156	NZI 205 Reel + Avon E/Large U Shackle + M12 110 Bolt	NZI/Avon	NZ	Assembled	Bundle	1.2kg	10

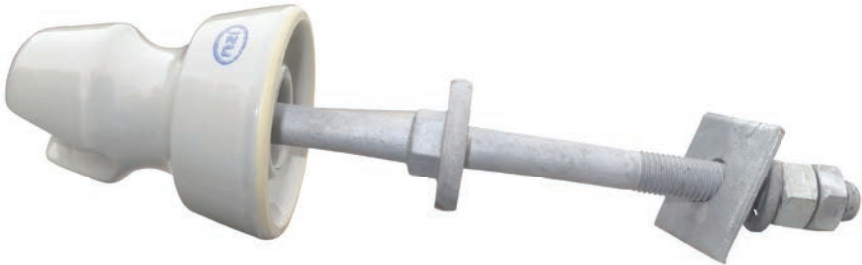


LV PORCELAIN REELS & SPIKE

Part Number	Description	Brand	Origin	Rated	Groove	Load	Fixing	Glaze	Unit	Weight	Box Qty	Drawing
<b>Reels</b>												
109029	NZI 120 Reel	NZI	NZ		13mm	4.5kN	14mm Diameter	Clear	Each	130g	30	S1326
109207	NZI 210 Reel	NZI	NZ	650V	10mm	6kN	17.5mm Diameter	Grey	Each	220g	80	S1331
109061	NZI 220 Reel	NZI	NZ	650V	19mm	5.5kN	17mm Diameter	Grey	Each	295g	80	S1332
109088	NZI 224 Trurip Reel	NZI	NZ	650V	25.5mm	13.5kN	17.5mm Diameter	Grey	Each	385g	34	S1098
109010	NZI 205 Reel	NZI	NZ	3.3kV	18mm	10kN	17.5mm Diameter	Grey	Each	540g	42	S1330
<b>Spike</b>												
100501	NZI 103 Spike	NZI	NZ	650V	16mm Hole	4kN	Coach Screw	Grey	Each	325g	50	D267-0502



510 + Cordeau Spindle + Washer



511 + Cordeau Spindle + Washer



Preassembled



Full AX Fittings



16/Box

## PRE-ASSEMBLED LV INSULATOR BUNDLES

Part Number	Description	Brands	Origin	Assembled?	Unit	Weight	Box Qty
<b>510 Bundle</b>							
102164	NZI 510 Insulator + AX 5/8 Cordeau Spindle + AX Oiled Leather Washer	NZI/AX	NZ	Assembled	Bundle	1.1kg	16
<b>511 Bundle</b>							
102172	NZI 511 Insulator + AX 5/8 Cordeau Spindle + AX Oiled Leather Washer	NZI/AX	NZ	Assembled	Bundle	1.1kg	16



**LV PORCELAIN PIN-TYPE INSULATORS (TIE TOP)**

Part Number	Description	Brand	Origin	Groove	Top	Line Voltage	Colour	Thread	Unit	Weight	Box/Pallet	Drawing
<b>LV Pin-Type Tie Top</b>												
102040	NZI 510 (Round Top)	NZI	NZ	26mm	Tie Top	0.4kV-3kV	Grey	5/8" Cordeau	Each	605g	30/1200	S1003
102067	NZI 511 (Square Top)	NZI	NZ	32mm	Tie Top	0.4kV-3kV	Grey	5/8" Cordeau	Each	600g	30/1200	S1656
Part Number	Description	Brand	Origin	Length	Strength	Diameter	Head	Thread	Unit	Weight	Box/Pallet	Drawing
<b>Spindle for 510/511</b>												
540358	5/8 Cordeau Spindle	AX	China	118/145mm	3.3kN	M16	Steel	5/8" Cordeau	Each	670g	30/1200	D374-2009
Part Number	Description	Brand	Origin	Detail	OD	Internal Diameter	Unit	Weight	Pack Qty			
<b>Washer for 510/511</b>												
540234	Leather Washer	AX	NZ	Oiled Leather	23mm	5/8" (15.9mm)	Each	1.2g	90			



1540



140B1



821



5/8" Cordeau

## 11KV PORCELAIN PIN-TYPE INSULATORS (TIE TOP)

Part Number	Description	Brand	Origin	Creepage	Top	Groove	Colour	Thread	Unit	Weight	Box/ Pallet	Drawing
<b>1540 Pin-Type Tie Top</b>												
104574	NZI 1540W	NZI	NZ	300mm	Tie Top	32mm	Grey	1 & 3/8"	Each	2.0kg	6/144	S1071-24
<b>Spindle for 1540</b>												
540455	AX 140B1 Spindle	AX	China	171/134mm	10kN	M20	Lead	1 & 3/8"	Each	1.6kg	12/480	D374-2130
Part Number	Description	Brand	Origin	Creepage	Top	Groove	Colour	Thread	Unit	Weight	Box Qty	Drawing
<b>821 Pin-Type Tie Top</b>												
103608	NZI 821	NZI	NZ	185mm	Tie Top	23mm	Grey	5/8" Cordeau	Each	930g	18	S1310
<b>Spindle for 821</b>												
540358	AX 5/8 Cordeau Spindle	AX	China	118/145mm	3.3kN	M16	Steel	5/8" Cordeau	Each	670g	30/1200	D374-2009

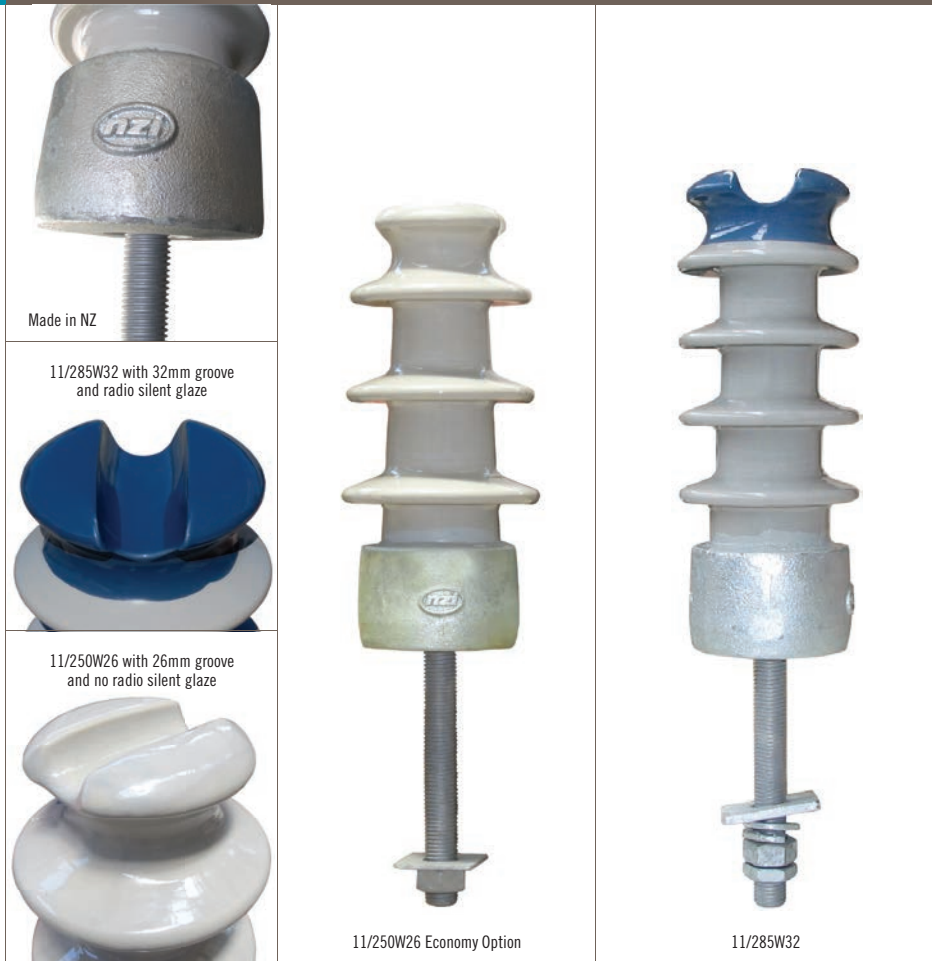


**11KV PORCELAIN PIN-TYPE INSULATORS (TIE TOP)**

Part Number	Description	Brand	Origin	Creepage	Top	Groove	Colour	Thread	Unit	Weight	Box/ Pallet	Drawing
<b>11kV Pin Insulators</b>												
103160	NZI 1130W (26mm Groove)	NZI	NZ	250mm	Tie Top	26mm	Grey	1 Inch SLHT	Each	1.5kg	12/288	M1022-14
104507	NZI 1130W (32mm Groove)	NZI	NZ	250mm	Tie Top	32mm	Grey	1 Inch SLHT	Each	1.5kg	12/288	M1022-17

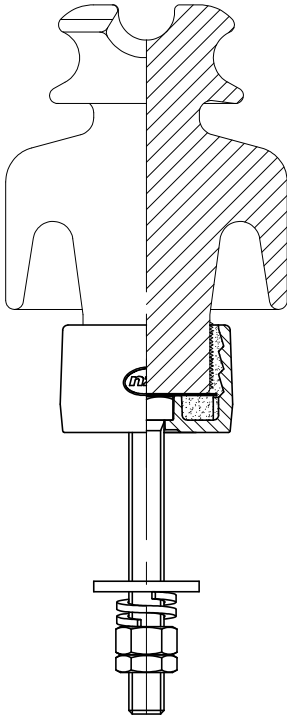
Part Number	Description	Brand	Origin	Length	Strength	Diameter	Head	Thread	Unit	Weight	Box Qty	Drawing
<b>Spindles for 1130</b>												
536164	AX Nema 1" Nylon Spindle	AX	China	152/146mm	6kN	M20	Nylon	1 Inch SLHT	Each	1.0kg	12/480	D374-2134
536326	AX Nema 1" Lead Spindle	AX	China	152/146mm	6kN	M20	Lead	1 Inch SLHT	Each	1.1kg	12/480	D374-2118

<b>1130 Bundles</b>												
103837	NZI 1130W26 + AX Nema Nylon Spindle							Assembled Bundle	2.5kg	6	D750-0502	
103934	NZI 1130W32 + AX Nema Nylon Spindle							Assembled Bundle	2.5kg	6	D750-0502	
103403	NZI 1130W26 + AX Nema Lead Spindle							Assembled Bundle	2.5kg	6	D750-0502	
103438	NZI 1130W32 + AX Nema Lead Spindle							Assembled Bundle	2.5kg	6	D750-0502	



## 11kV PORCELAIN LINE POST INSULATORS (TIE TOP)

Part Number	Description	Brand	Origin	Creepage	Top	Groove	kN	Stud	Glaze	Unit	Weight	Box/ Pallet	Drawing
<b>11kV Economy* Tie Top Line Post</b>													
464740	NZI 11kV 250W26 Line Post	NZI	NZ	250mm	Tie Top	26mm	10	160mm M20	Grey	Each	6.5kg	3/144	D632-0578
* economy option with lower creepage, no radio silent, 26mm groove, 3mm washer + full nut only, in a cardboard box													
<b>11kV Tie Top Line Post</b>													
460818	NZI 11kV 285W32 Line Post	NZI	NZ	285mm	Tie Top	32mm	10	160mm M20	Grey	Each	7.0kg	3/144	D632-0551
464768	NZI 11kV 285W32 Line Post	NZI	NZ	285mm	Tie Top	32mm	10	205mm M20	Grey	Each	7.0kg	3/144	D632-0560



11/305W32 Fog



11/420W32 Ultra Premium

**11KV PORCELAIN LINE POST INSULATORS (TIE TOP)**

Part Number	Description	Brand	Origin	Creepage	Top	Groove	kN	Stud	Glaze	Unit	Weight	Box/ Drawing	Pallet
<b>11kV Fog Profile Tie Top Line Post</b>													
465410	NZI 11kV 305W32 Line Post	NZI	NZ	305mm	Tie Top	32mm	7	160mm M20	Grey	Each	6.5kg	2/80	D632-0579
<b>11kV Ultra Premium Tie Top Line Post</b>													
464314	NZI 11kV 420W32 Line Post	NZI	NZ	420mm	Tie Top	32mm	17.5	160mm M20	Grey	Each	8.4kg	1/40	D632-0564
464287	NZI 11kV 420W32 Line Post	NZI	NZ	420mm	Tie Top	32mm	17.5	190mm M20	Grey	Each	8.4kg	1/40	D632-0565



# NZI 1132T Pin-Type Clamp Top & Spindle

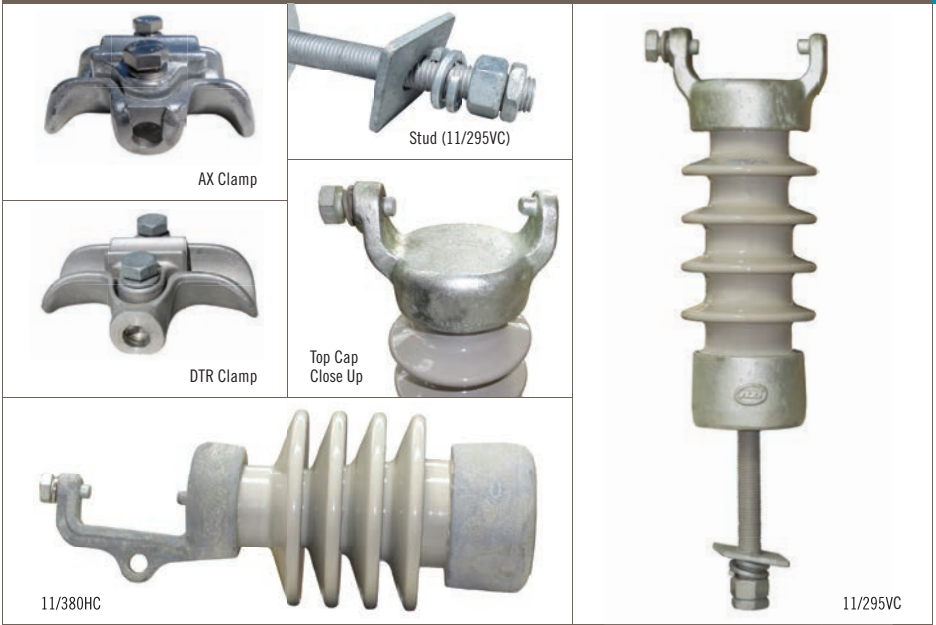


## 11kV PORCELAIN PIN-TYPE INSULATOR (CLAMP TOP)

Part Number	Description	Brand	Origin	Creepage	Top	Clamp	Glaze	Thread	Unit Weight	Box/ Pallet	Drawing	
<b>11kV Pin-Type Clamp Top</b>												
104175	NZI 1132T Insulator	NZI	NZ	250mm	Cap & Pintle	Separate	Grey	BS Small Steel Head	Each	3.6kg	6/144	D351-0502
Part Number	Description	Brand	Origin	Conductor Range	Length	Width	Construction	Unit Weight	Box Qty	Drawing		
<b>Clamp for 1132T (sold separately)</b>												
465283	AX 10-38mm Special Clamp	AX	NZ	10-38mm	127mm	98mm	Aluminium	Each	450g	12	D330-0503	
Part Number	Description	Brand	Origin	Length	Strength	Diameter	Head	Thread	Unit Weight	Box/ Pallet	Drawing	
<b>Spindle for 1132T</b>												
540528	AX R23 Spindle	AX	UK	170/130mm	10kN	M18	Steel	BS Small Steel Head	Each	1.1kg	12/240	D374-2027



# NZI 11kV LINE POSTS Clamp Top



## 11KV PORCELAIN LINE POST INSULATORS (CLAMP TOP)

Part Number	Description	Brand	Origin	Creepage kN	Top	Clamp	Glaze	Stud	Unit	Weight	Box/Pallet	Drawing
<b>11kV Vertical Clamp Line Post</b>												
464589	NZI 11kV 295VC Line Post	NZI	NZ	295mm	9.5	Cap & Pintle	Separate	Grey M20	160mm	Each	7.0kg	3/72 D724-0526
<b>11kV Horizontal Clamp Line Post</b>												
462411	NZI 11kV 380HC Line Post	NZI	NZ	380mm	12	Cap & Pintle	Separate	Grey	Separate	Each	12.0kg	1/40 D725-0510

Part Number	Description	Brand	Origin	Conductor Length Range	Width	Construction	Unit	Weight	Box Qty	Drawing
<b>Clamp options for 11kV Line Posts (sold separately)</b>										
461792	AX 10-38mm Trunnion Clamp	AX	NZ	10-38mm	127mm	98mm Aluminium	Each	450g	12	D330-0501
553727	DTR 13-27mm Trunnion Clamp	DTR	Korea	13-27mm	135mm	98mm Aluminium	Each	650g	6	DTR-ATC-106

Part Number	Description	Brand	Origin	Length	Diameter	Fixings	Unit	Weight	Box Qty	Drawing
<b>Stud options for 11/380HC Horizontal Post (sold separately)</b>										
465291	AX 45mm Line Post Stud	AX	NZ	45mm	M20	SW/FN	Each	400g	24	D330-2013
465305	AX 160mm Line Post Stud	AX	NZ	160mm	M20	FW/SW/FN/HN	Each	710g	18	D330-2022
465313	AX 205mm Line Post Stud	AX	NZ	205mm	M20	FW/SW/FN/HN	Each	800g	12	D330-2059

## NZI 22kV PIN-TYPE Tie Top & Spindles



### 22kV PORCELAIN PIN INSULATOR (TIE TOP)

Part Number	Description	Brand	Origin	Creepage	Top	Groove	Colour	Thread	Unit	Weight	Box/ Pallet	Drawing
<b>22kV Pin-Type Tie Top</b>												
106941	NZI 22/450	NZI	NZ	450mm	Tie Top	32mm	Grey	Pattern C	Each	3.6kg	6/120	S2466-1

Part Number	Description	Brand	Origin	Length	Strength	Diameter	Head	Thread	Unit	Weight	Box/ Pallet	Drawing
<b>Spindles for ALP22/450</b>												
538213	AX M20 Pattern C Spindle (20mm)	AX	China	200/165mm	10kN	M20	Lead	Pattern C	Each	2.2kg	6/240	D374-2084
538205	AX M24 Pattern C Spindle (24mm)	AX	China	200/165mm	11kN	M24	Lead	Pattern C	Each	2.4kg	6/240	D374-2085



## NZI 22KV LINE POSTS (Tie Top & Clamp Top)



22/490W32



22/630W32



22/490VC

### 22KV PORCELAIN LINE POST INSULATORS (TIE TOP & CLAMP TOP)

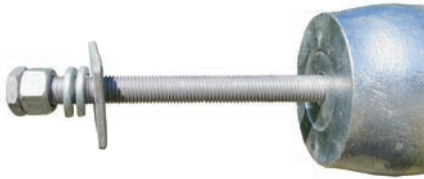
Part Number	Description	Brand	Origin	Creepage kN	Top	Groove	Glaze	Stud	Unit	Weight	Box/ Pallet	Drawing
<b>22kV Tie Top Line Posts</b>												
464619	NZI 22kV 490W32 Line Post	NZI	NZ	490mm	18	Tie Top	32mm	Grey M20	205mm	Each	9.0kg	1/40 D632-0573
464368	NZI 22kV 630W32 Ultra Premium Line Post	NZI	NZ	630mm	17.5	Tie Top	32mm	Grey M20	205mm	Each	12.4kg	1/40 D632-0563
Part Number	Description	Brand	Origin	Creepage kN	Top	Clamp	Glaze	Stud	Unit	Weight	Box/ Pallet	Drawing
<b>22kV Vertical Clamp Line Post</b>												
465321	NZI 22kV 490VC Line Post	NZI	NZ	490mm	12	Cap & Pintle	Separate	Grey M20	205mm	Each	14.0kg	1/40 D724-0527
Part Number	Description	Brand	Origin	Conductor Range	Length	Width	Construction	Unit	Weight	Box Qty	Drawing	
<b>Clamp options for 22/490VC (sold separately)</b>												
461792	AX 10-38mm Trunnion Clamp	AX	NZ	10-38mm	127mm	98mm	Aluminium	Each	450g	12	D330-0501	
553727	DTR 13-27mm Trunnion Clamp	DTR	Korea	13-27mm	135mm	98mm	Aluminium	Each	650g	6	DTR-ATC-106	



**33KV PORCELAIN PIN-TYPE INSULATORS (TIE TOP)**

Part Number	Description	Brand	Origin	Creepage	Top	Groove	Colour	Thread	Unit	Weight	Box/ Pallet	Drawing
<b>33kV Pin-Type Tie Top</b>												
112526	NZI 3370	NZI	NZ	500mm	Tie Top	32mm	Grey	BS Large Steel Head	Each	5.2kg	3/96	D327-0503
115029	NZI 33/920	NZI	NZ	920mm	Tie Top	32mm	Grey	BS Large Steel Head	Each	16.2kg	1/32	D718-0503
<b>44kV Pin-Type Tie Top</b>												
111376	NZI 4490	NZI	NZ	665mm	Tie Top	38mm	Grey	BS Large Steel Head	Each	9.5kg	3/45	D343-0504
Part Number	Description	Brand	Origin	Length	Strength	Diameter	Head	Thread	Unit	Weight	Box/ Pallet	Drawing
<b>Spindle for all three 33kV Insulators</b>												
540463	AX R31 Steel Spindle	AX	China	305/178mm	10kN	M22	Steel	BS Large Steel Head	Each	2.9kg	6/288	D374-2023
<b>Shorter Spindle option for 3370 only</b>												
540706	AX R29 Steel Spindle	AX	UK	230/152mm	10kN	M22	Steel	BS Large Steel Head	Each	1.9kg	6/240	D374-2110

# NZI 33kV LINE POSTS Tie Top



Longer 205mm Stud now on all NZI 33kV Vertical Posts



1/Box



33/915W32



33/915W40

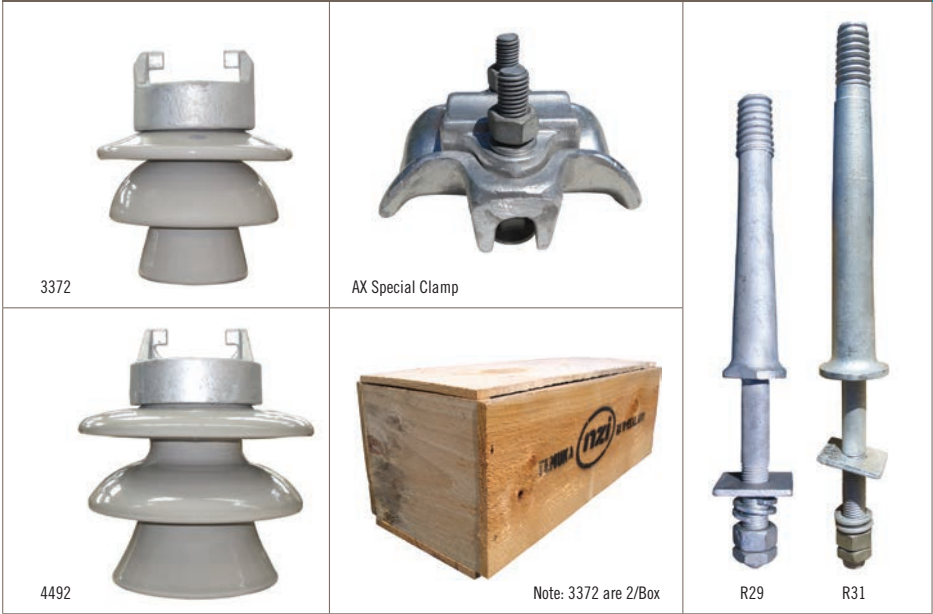


33/955W32 Ultra Premium

## 33kV PORCELAIN LINE POST INSULATORS (TIE TOP)

Part Number	Description	Brand	Origin	Creepage	Top	Groove	kN	Stud	Glaze	Unit	Weight	Box/ Pallet	Drawing
<b>33kV Tie Top Line Posts</b>													
464570	NZI 33kV 915W32 Line Post	NZI	NZ	915mm	Tie Top	32mm	13.5	205mm M20	Grey	Each	15.4kg	1/40	D632-0570
464562	NZI 33kV 915W40 Line Post	NZI	NZ	915mm	Tie Top	40mm	13.5	205mm M20	Grey	Each	15.4kg	1/40	D632-0571
<b>33kV Ultra Premium Tie Top Line Post</b>													
464376	NZI 33kV 955W32 Line Post	NZI	NZ	955mm	Tie Top	32mm	13	205mm M20	Grey	Each	17.4kg	1/40	D632-0562





**33kV PORCELAIN PIN-TYPE INSULATORS (CLAMP TOP)**

Part Number	Description	Brand	Origin	Creepage Top	Clamp	Glaze	Thread	Unit	Weight	Box/ Pallet	Drawing	
<b>33kV Pin-Type Clamp Top</b>												
112550	NZI 3372	NZI	NZ	510mm	Cap & Pintle	Separate	Grey	BS Large Steel Head	Each	8.2kg	2/32 D347-0504	
<b>44kV Pin-Type Clamp Top</b>												
111414	NZI 4492	NZI	NZ	635mm	Cap & Pintle	Separate	Grey	BS Large Steel Head	Each	14.1kg	1/32 D341-0506	
Part Number	Description	Brand	Origin	Conductor Range	Length	Width	Construction	Unit	Weight	Box Qty	Drawing	
<b>Clamp for 3372 &amp; 4492 (sold separately)</b>												
465283	AX 10-38mm Special Clamp	AX	NZ	10-38mm	127mm	98mm	Aluminium	Each	450g	12	D330-0503	
Part Number	Description	Brand	Origin	Length	Strength	Diameter	Head	Thread	Unit	Weight	Box/ Pallet	Drawing
<b>Spindle for both Insulators</b>												
540463	AX R31 Steel Spindle	AX	China	305/178mm	10kN	M22	Steel	BS Large Steel Head	Each	2.9kg	6/288	D374-2023
<b>Shorter Spindle option for 3372 only</b>												
540706	AX R29 Steel Spindle	AX	UK	230/152mm	10kN	M22	Steel	BS Large Steel Head	Each	1.9kg	6/240	D374-2110



## NZI 33kV LINE POSTS Clamp Top



## 33KV PORCELAIN LINE POST INSULATORS (CLAMP TOP)

Part Number	Description	Brand	Origin	Creepage kN	Top	Clamp	Glaze Stud	Unit Weight	Box/ Pallet	Drawing
<b>33kV Vertical Clamp Line Post</b>										
464597	NZI 33kV 940VC Line Post	NZI	NZ	940mm	10	Cap & Pintle	Separate Grey 205mm M20	Each 15.5kg	1/30	D724-0524
465836	NZI 33kV 1075VC Line Post	NZI	NZ	1075mm	10	Cap & Pintle	Separate Grey 205mm M20	Each 16.5kg	1/30	D724-0530
<b>33kV Horizontal Clamp Line Post</b>										
465208	NZI 33kV 995HC Line Post	NZI	NZ	995mm	12.5	Cap & Pintle	Separate Grey Separate	Each 21.0kg	1/32	D725-0514
Part Number	Description	Brand	Origin	Conductor Range	Length	Width	Construction	Unit Weight	Box Qty	Drawing
<b>Clamp options for 33kV Line Posts (sold separately)</b>										
461792	AX 10-38mm Trunion Clamp	AX	NZ	10-38mm	127mm	98mm	Aluminium	Each 450g	12	D330-0501
553727	DTR 13-27mm Trunion Clamp	DTR	Korea	13-27mm	135mm	98mm	Aluminium	Each 650g	6	DTR-ATC-106
Part Number	Description	Brand	Origin	Length	Diameter	Fixings	Unit Weight	Box Qty	Drawing	
<b>Stud options for 33/995HC (sold separately)</b>										
465291	AX 45mm Line Post Stud	AX	NZ	45mm	M20	SW/FN	Each 400g	24	D330-2013	
465305	AX 160mm Line Post Stud	AX	NZ	160mm	M20	FW/SW/FN/HN	Each 710g	18	D330-2022	
465313	AX 205mm Line Post Stud	AX	NZ	205mm	M20	FW/SW/FN/HN	Each 800g	12	D330-2059	





Base Cap for both Vertical and Horizontal



Vertical Top Cap



110kV 2850HC Horizontal Line Post (clamp supplied separately)

## 110KV PORCELAIN LINE POST INSULATORS (CLAMP TOP)

Part Number	Description	Brand	Origin	Creepage	Strength	Top	Glaze	Fixing & Clamp	Unit	Weight	Box Qty	Drawing
<b>66kV Vertical Clamp Top Post</b>												
460419	NZI 66kV 1830VC Line Post	NZI	NZ	1830mm	10kN	Cap & Pintle	Grey	Separate	Each	37kg	1	D724-0518
<b>66kV Horizontal Clamp Top Post</b>												
460451	NZI 66kV 1830HC Line Post	NZI	NZ	1830mm	10kN	Cap & Pintle	Grey	Separate	Each	37kg	1	D725-0523
<b>110kV Vertical Clamp Top Post</b>												
460222	NZI 110kV 2850VC Line Post	NZI	NZ	2850mm	10kN	Cap & Pintle	Grey	Separate	Each	60kg	1	D724-0519
<b>110kV Horizontal Clamp Top Post</b>												
460265	NZI 110kV 2850HC Line Post	NZI	NZ	2850mm	10kN	Cap & Pintle	Grey	Separate	Each	60kg	1	D725-0524
Part Number	Description	Brand	Origin	Conductor Range	Length	Width	Construction	Unit	Weight	Box Qty	Drawing	
<b>Clamp for 66kV &amp; 110kV Line Posts (sold separately)</b>												
461792	AX 10-38mm Trunnion Clamp	AX	NZ	10-38mm	127mm	98mm	Aluminium	Each	450g	12	D330-0501	



**12-36KV PORCELAIN STANDOFF INSULATORS**

Part Number	Description	Brand	Origin	Creepage	Length	kN	End Fittings	Glaze	Unit	Weight	Box Qty	Drawing
<b>T-Insert Standoff</b>												
599263	NZI 12kV T-Insert	NZI	NZ	480mm	235mm	3.5	T Insert	Grey	Each	6.0kg	6	D412-0504
<b>External Cap Standoffs</b>												
598291	NZI 12kV Standoff	NZI	NZ	445mm	235mm	4	76CRS Caps	Grey	Each	5.9kg	4	D412-0529
598305	NZI 22kV Standoff	NZI	NZ	590mm	300mm	3	76CRS Caps	Grey	Each	6.8kg	3	D412-0531
598313	NZI 36kV Standoff	NZI	NZ	880mm	406mm	2	76CRS Caps	Grey	Each	9.0kg	3	D412-0527





1131



4494



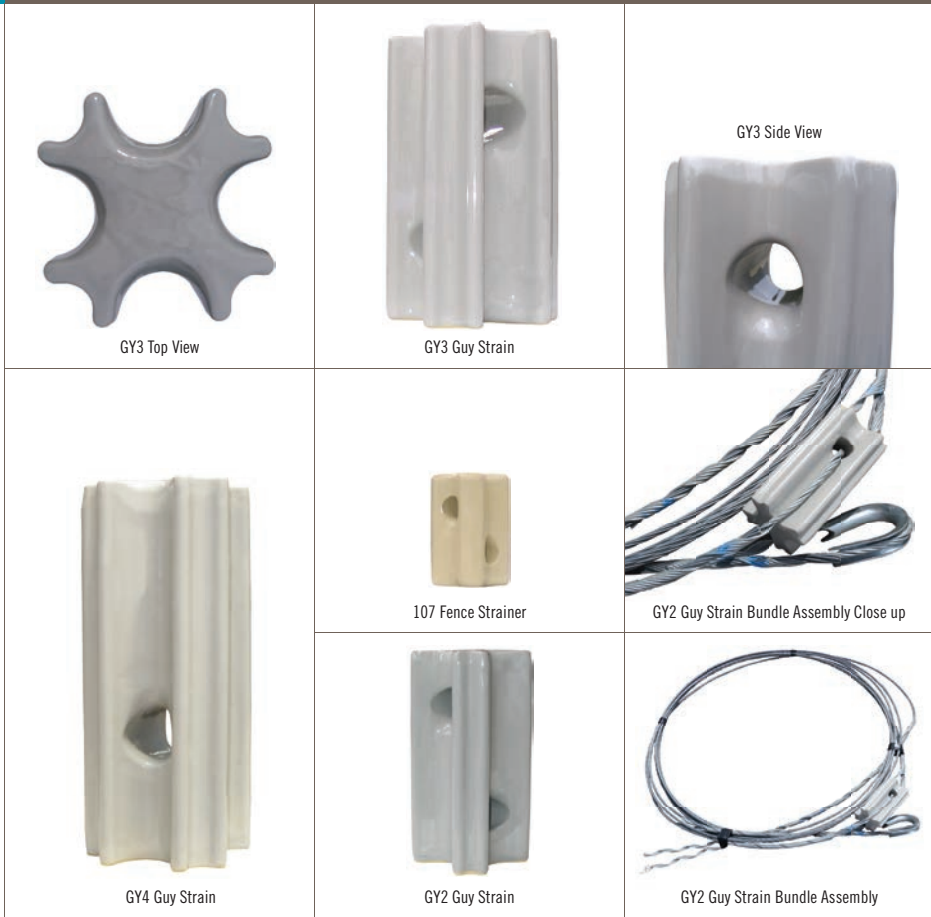
110kV



72.5kV (460990)

## 11-72.5KV PORCELAIN STATION POST INSULATORS

Part Number	Description	Brand	Origin	Creepage	Length	KN	Caps	Construction	Glaze	Weight	Box/ Drawing	Pallet
<b>11kV Station Post</b>												
104744	NZI 1131 11kV Station Post	NZI	NZ	265mm	228mm	6	76PCD	1 Piece	Grey	4.4kg	6/120	D712-0501
<b>36kV Station Posts</b>												
460001	NZI 4494 36kV Station Post	NZI	NZ	860mm	381mm	12	76PCD	1 Piece	Grey	20kg	1/32	D687-0547
460028	NZI 4494 Inverted 36kV Station Post	NZI	NZ	860mm	381mm	12	76PCD	1 Piece	Grey	20kg	1/32	D687-0593
462489	NZI 36kV Station Post	NZI	NZ	950mm	475mm	5	76PCD	1 Piece	Grey	16kg	1/40	D687-0531
<b>44kV Station Post</b>												
113514	NZI 4497 HD 44kV Station Post	NZI	NZ	813mm	381mm	11	76PCD	1 Piece	Grey	16kg	1/27	D400-0502
<b>72.5kV Station Posts</b>												
460990	NZI 72.5kV Station Post	NZI	NZ	1600mm	762mm	8	76PCD	1 Piece	Grey	39kg	1/20	D687-0588
460737	NZI 72.5kV Station Post (Pedestal Mount)	NZI	NZ	1880mm	770mm	7	127PCD	1 Piece	Grey	40kg	1/20	D687-0590
<b>110kV Station Posts</b>												
460168	NZI 110kV Station Post (Pedestal Mount)	NZI	NZ	2780mm	1104mm	4.5	127PCD	1 Piece	Grey	50kg	1/20	D687-0570



**PORCELAIN GUY STRAINS & FENCE STRAINER**

Part Number	Description	Brand	Origin	Length	Wet Flashover	Failing Load	Glaze	Unit	Weight	Box/Pallet	Drawing
<b>Guy Strains</b>											
108197	NZI GY2 15kV Guy Strain	NZI	NZ	146mm	15kV	71kN	Grey	Each	1.2kg	18/1152	S2289
108162	NZI GY3 20kV Guy Strain	NZI	NZ	216mm	30kV	222kN	Grey	Each	3.8kg	4/192	S2290
108170	NZI GY4 30kV Guy Strain	NZI	NZ	280mm	30kV	222kN	Grey	Each	5.7kg	4/168	S2291
<b>Fence Strainer</b>											
108014	NZI 107 Fence Strain	NZI	NZ	57mm	4kV	4.5kN	Clear	Each	135g	140	M1515
<b>Guy Strain Bundle Assembly</b>											
108669	NZI GY2 Guy Strain Bundle Assembly	NZI	NZ	18m				Each	7.5kg	40/40	



Lineguard 160A



Mini Wedge

### LINEGUARD DISCONNECTS & MINI WEDGE FUSEHOLDER

Part Number	Description	Brand	Origin	Amps	Colour	Detail	Complies With	Unit Weight	Box Qty	
<b>Lineguard Disconnects</b>										
468177	NZI 100A Single Phase Ferrule Disconnect	NZI	NZ	100A	Black	Polyamide & Nickle-Plated NFM	IEC 60947	Each	545g	20
468185	NZI 160A Single Phase NH00 Disconnect	NZI	NZ	160A	Black	Polyamide & Nickle-Plated NFM	IEC 60947	Each	505g	20
<b>Porcelain Mini Wedge Fuseholder</b>										
468789	NZI Mini Wedge Offset Tag Carrier/Base Complete	NZI	NZ	200A	Grey	Porcelain & ETPNFM	AS/NZS 3947	Each	3.0kg	5



60A Rewireable



30A Rewireable



Rewireable Cutout

### REWIREABLE PORCELAIN POLE MOUNTED CUTOUTS

Part Number	Description	Brand	Origin	Amps	Wired?	Glaze	Construction	Unit	Weight	Box Qty
<b>30A Rewireable Cutouts</b>										
144029	NZI 30A RW Plug + Base	NZI	NZ	30A		Grey	Porcelain & ETPNFM	Each	690g	30
146137	NZI 30A RW Plug + Base + Wired	NZI	NZ	30A	Wired	Grey	Porcelain & ETPNFM	Each	690g	30
144452	NZI 30A RW Plug Only	NZI	NZ	30A		Grey	Porcelain & ETPNFM	Each	190g	54
144061	NZI 30A RW Plug + Wired	NZI	NZ	30A	Wired	Grey	Porcelain & ETPNFM	Each	190g	30
144495	NZI 30A Universal Cutout Base	NZI	NZ	30A		Grey	Porcelain & ETPNFM	Each	460g	30
<b>60A Rewireable Cutouts</b>										
144398	NZI 60A RW Plug + Base	NZI	NZ	60A		Grey	Porcelain & ETPNFM	Each	1.5kg	15
146110	NZI 60A RW Plug + Base + Wired	NZI	NZ	60A	Wired	Grey	Porcelain & ETPNFM	Each	1.5kg	15
144444	NZI 60A RW Plug Only	NZI	NZ	60A		Grey	Porcelain & ETPNFM	Each	380g	30
146129	NZI 60A RW Plug + Wired	NZI	NZ	60A	Wired	Grey	Porcelain & ETPNFM	Each	380g	15
144509	NZI 60A Universal Cutout Base	NZI	NZ	60A		Grey	Porcelain & ETPNFM	Each	1.1kg	15
<b>100A Rewireable Cutouts</b>										
144916	NZI 100A RW Plug + Base	NZI	NZ	100A		Grey	Porcelain & ETPNFM	Each	3.1kg	6
146145	NZI 100A RW Plug + Base + Wired	NZI	NZ	100A	Wired	Grey	Porcelain & ETPNFM	Each	3.1kg	6
144959	NZI 100A RW Plug Only	NZI	NZ	100A		Grey	Porcelain & ETPNFM	Each	720g	6
144703	NZI 100A RW Plug + Wired	NZI	NZ	100A	Wired	Grey	Porcelain & ETPNFM	Each	720g	6



30A



60A



Top View



60A HRC

**HRC PORCELAIN POLE MOUNTED CUTOUTS**

Part Number	Description	Brand	Origin	Amps	Fuse Included?	Glaze	Construction	Unit Weight	Box Qty
<b>30A HRC Cutouts</b>									
144037	NZI 30A HRC Plug + Base	NZI	NZ	30A	-	Grey	Porcelain & ETPNFM	Each 620g	30
144118	NZI 30A HRC Plug Only	NZI	NZ	30A	-	Grey	Porcelain & ETPNFM	Each 130g	30
144495	NZI 30A Universal Cutout Base	NZI	NZ	30A	-	Grey	Porcelain & ETPNFM	Each 460g	30
<b>60A HRC Cutouts</b>									
144401	NZI 60A HRC Plug + Base	NZI	NZ	60A	-	Grey	Porcelain & ETPNFM	Each 1.7kg	15
144460	NZI 60A HRC Plug + Base + 60KR85	NZI	NZ	60A	60KR85	Grey	Porcelain & ETPNFM	Each 1.8kg	15
144525	NZI 60A HRC Plug Only	NZI	NZ	60A	-	Grey	Porcelain & ETPNFM	Each 595g	30
144630	NZI 60A HRC Plug + 60KR85	NZI	NZ	60A	60KR85	Grey	Porcelain & ETPNFM	Each 645g	30
144509	NZI 60A Universal Cutout Base	NZI	NZ	60A	-	Grey	Porcelain & ETPNFM	Each 1.1kg	15





BS/BE

EB/EE



NZI 63A K07 Fuseholders, made in Temuka



Side View



BE/BE

**63A FUSEHOLDERS FOR OFFSET TAG FUSELINKS**

Part Number	Description	Brand	Origin	Amps	Rating	Configuration	Unit	Colour	Weight
<b>63A K07 HG Phenolic Fuseholders (AS/NZS 60269)</b>									
676004	NZI K07 63A EE/EE Fuseholder	NZI	NZ	63A	500V	End Entry End Entry	Each	Black	260g
676012	NZI K07 63A BE/BE Fuseholder	NZI	NZ	63A	500V	Back Entry Back Entry	Each	Black	270g
676020	NZI K07 63A BE/EE Fuseholder	NZI	NZ	63A	500V	Back Entry End Entry	Each	Black	265g
678023	NZI K07 63A BS/BE Fuseholder	NZI	NZ	63A	500V	Back Stud Back Entry	Each	Black	320g
678031	NZI K07 63A BS/EE Fuseholder	NZI	NZ	63A	500V	Back Stud End Entry	Each	Black	320g
678058	NZI K07 63A BB/EE Fuseholder	NZI	NZ	63A	500V	Back Busbar End Entry	Each	Black	290g
678066	NZI K07 63A EB/EE Fuseholder	NZI	NZ	63A	500V	End Busbar End Entry	Each	Black	280g
678074	NZI K07 63A EB/BE Fuseholder	NZI	NZ	63A	500V	End Busbar Back Entry	Each	Black	280g
678007	NZI K07 63A BS/BS Fuseholder	NZI	NZ	63A	500V	Two Back Studs	Each	Black	380g





NZI Fused Streetlight Panel



NZI Fused Streetlight Panel – Side View



NZI Fused Streetlight Panel – Back View



NZI 60A 4 Way Domestic Panel



NZI 60A 4 Way Domestic Panel – Back View

### NZI LOW VOLTAGE PANELS

Part Number	Description	Brand	Origin	Assembled	Dimensions	Unit	Box Qty
<b>Low Voltage Panels</b>							
301167	NZI Fused 60A 2W + P Panel	NZI	NZ	Preassembled	120x187mm	Each	1
301175	NZI Fused 60A 3PH Panel	NZI	NZ	Preassembled	110x187mm	Each	1
301191	NZI Fused 60A 6 Fuse Panel	NZI	NZ	Preassembled	270x335mm	Each	1
301574	NZI 60A 4 Way Domestic Panel	NZI	NZ	Preassembled	138x196mm	Each	1
301582	NZI Fused 60A 4 Fuse Domestic Panel	NZI	NZ	Preassembled	220x335mm	Each	1
301906	NZI Fused 100A 3 Phase Panel	NZI	NZ	Preassembled	145x205mm	Each	1
301914	NZI Fused 100A 3 Phase with Stud Panel	NZI	NZ	Preassembled	155x187mm	Each	1
301922	NZI Fused Industrial 60/200A Panel	NZI	NZ	Preassembled	220x335mm	Each	1
302007	NZI Transformer LT Panel	NZI	NZ	Preassembled	350x540mm	Each	1
302015	NZI Fused Streetlight Panel	NZI	NZ	Preassembled	267x50mm	Each	1

We can make to order any configuration to meet customers' requirements.





M8 DMC Standoffs



M10 DMC Standoffs

## DMC STANDOFFS WITH STEEL INSERTS (IEC 60660)

Part Number	Description	Brand	Origin	Rating	Inserts	Height	Colour	Construction	Colour	Unit	Weight	Box Qty
<b>M8 DMC Standoffs</b>												
515191	NZI 6/35/M8 DMC Standoff	NZI	NZ	1.5kV	M8	35mm	Grey	DMC & Zinc-Plated Steel	Grey	Each	95g	12
515221	NZI 6/38/M8 DMC Standoff	NZI	NZ	1.5kV	M8	38mm	Grey	DMC & Zinc-Plated Steel	Grey	Each	110g	12
515264	NZI 6/45/M8 DMC Standoff	NZI	NZ	1.5kV	M8	45mm	Grey	DMC & Zinc-Plated Steel	Grey	Each	135g	12
514705	NZI 6/50/M8 DMC Standoff	NZI	NZ	1.5kV	M8	50mm	Grey	DMC & Zinc-Plated Steel	Grey	Each	155g	12
<b>M10 DMC Standoffs</b>												
515299	NZI 6/35/M10 DMC Standoff	NZI	NZ	1.5kV	M10	35mm	Grey	DMC & Zinc-Plated Steel	Grey	Each	90g	12
515329	NZI 6/38/M10 DMC Standoff	NZI	NZ	1.5kV	M10	38mm	Grey	DMC & Zinc-Plated Steel	Grey	Each	105g	12
515353	NZI 6/45/M10 DMC Standoff	NZI	NZ	1.5kV	M10	45mm	Grey	DMC & Zinc-Plated Steel	Grey	Each	130g	12
514772	NZI 6/50/M10 DMC Standoff	NZI	NZ	1.5kV	M10	50mm	Grey	DMC & Zinc-Plated Steel	Grey	Each	150g	12



M6 Busbar Support



M8 Busbar Support



M10 Busbar Support



M12 Busbar Support

**PORCELAIN BUSBAR SUPPORTS - COMPLETE WITH BOLT (IEC 60273)**

Part Number	Description	Brand	Origin	Rating	Bolt	Material	Glaze	Unit	Weight	Box Qty
<b>3kV Busbar Supports</b>										
186104	NZI M6 Busbar Support	NZI	NZ	3kV	1/4" M6	Porcelain & Z/plated Steel	White	Each	171g	6
185043	NZI M8 Busbar Support	NZI	NZ	3kV	5/16" M8	Porcelain & Z/plated Steel	White	Each	185g	6
186112	NZI M10 Busbar Support	NZI	NZ	3kV	3/8" M10	Porcelain & Z/plated Steel	White	Each	215g	6
186120	NZI M12 Busbar Support	NZI	NZ	3kV	1/2" M12	Porcelain & Z/plated Steel	White	Each	330g	6



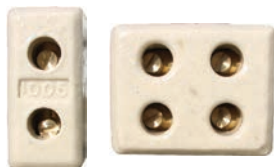
1004



3004 Side View



2005CFH



1005 &amp; 2005



3005



2004

## 1/2/3 WAY PORCELAIN CONNECTORS (AS/NZS 60998)

Part Number	Description	Brand	Origin	Voltage	Rating	Fixing Hole	Glaze	Unit	Weight	Box Qty
<b>15A Connectors</b>										
184012	NZI 1004 1-Way Connector	NZI	NZ	500V	15A	No Fixing Hole	Unglazed	Each	9g	28
184047	NZI 2004 2-Way Connector	NZI	NZ	500V	15A	No Fixing Hole	Clear	Each	16g	18
184063	NZI 2004CFH 2-Way Connector	NZI	NZ	500V	15A	Centre Fixing Hole	Clear	Each	21g	12
184098	NZI 3004 3-Way Connector	NZI	NZ	500V	15A	No Fixing Hole	Clear	Each	23g	12
184128	NZI 3004CFH 3-Way Connector	NZI	NZ	500V	15A	Centre Fixing Hole	Clear	Each	30g	9
<b>30A Connectors</b>										
184144	NZI 1005 1-Way Connector	NZI	NZ	500V	30A	No Fixing Hole	Clear	Each	32g	14
184179	NZI 2005 2-Way Connector	NZI	NZ	500V	30A	No Fixing Hole	Clear	Each	33g	8
184195	NZI 2005CFH 2-Way Connector	NZI	NZ	500V	30A	Centre Fixing Hole	Clear	Each	52g	6
184217	NZI 3005 3-Way Connector	NZI	NZ	500V	30A	No Fixing Hole	Clear	Each	57g	6
184233	NZI 3005CFH 3-Way Connector	NZI	NZ	500V	30A	Centre Fixing Hole	Clear	Each	77g	4
<b>60A Connectors</b>										
184276	NZI 2006CFH 2-Way Connector	NZI	NZ	500V	60A	Centre Fixing Hole	Clear	Each	105g	1
184284	NZI 3006CFH 3-Way Connector	NZI	NZ	500V	60A	Centre Fixing Hole	Clear	Each	150g	1



**'R' RESTRICTED MOUNTING LAMP HOLDERS (ES/GES to AS/NZS 60998, BC to AS 3117)**

Part Number	Description	Brand	Origin	Voltage	Rating	Mounting	Shrouding	Glaze	Unit	Weight	Box Qty
<b>Bayonet Cap Lampholders (max 250V)</b>											
164046	NZI BC 960 Lampholder	NZI	NZ	240V	5A	External Side	Unshrouded	Clear	Each	70g	8
164054	NZI BC 961 Lampholder	NZI	NZ	240V	5A	Ext Back (2-Pin Batten)	Unshrouded	Clear	Each	60g	8
<b>Edison Screw Lampholders (max 250V)</b>											
164194	NZI ES 971 Lampholder	NZI	NZ	240V	5A	External Back	Unshrouded	Clear	Each	85g	8
164216	NZI ES 975 Lampholder	NZI	NZ	240V	5A	Internal Back	Unshrouded	Clear	Each	70g	8
166316	NZI ES 970 Lampholder	NZI	NZ	240V	5A	External Side	Unshrouded	Clear	Each	105g	8
164275	NZI ES T10 Lampholder	NZI	NZ	240V	5A	External Back (HD)	Unshrouded	Clear	Each	75g	8
<b>Giant Edison Screw Lampholders</b>											
164011	NZI GES 926 Lampholder	NZI	NZ	650V	15A	Internal Back	Shrouded	White	Each	260g	6
164038	NZI GES 926-1 Lampholder	NZI	NZ	650V	15A	Internal Back	Unshrouded	White	Each	245g	6
164380	NZI GES 926-3 Lampholder	NZI	NZ	650V	15A	Internal Back	Unshrouded	White	Each	225g	6