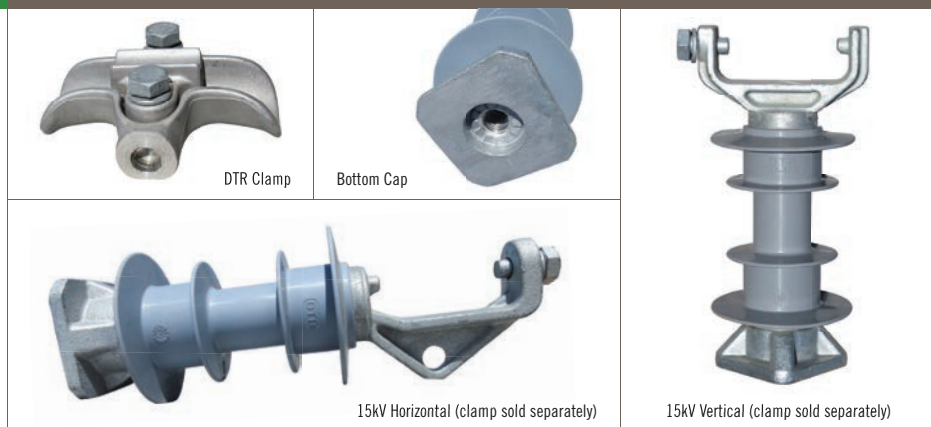


## DTR 15kV LINE POSTS (Tie Top &amp; Clamp Top)

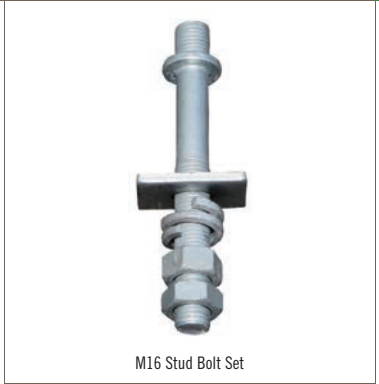
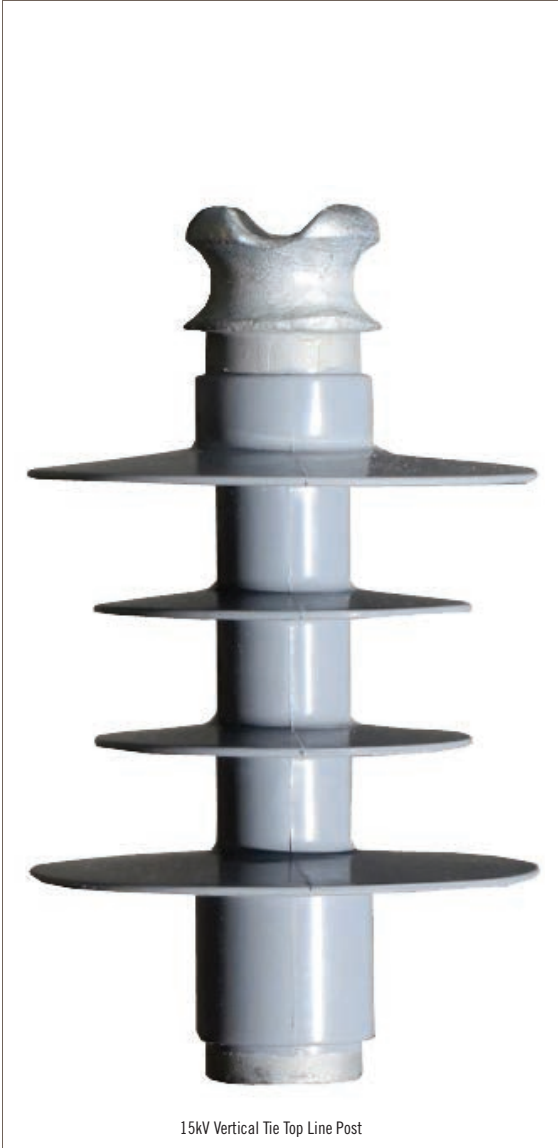


## 15KV POLYMER LINE POST INSULATORS (TIE TOP &amp; CLAMP TOP)

Part Number	Description	Brand	Origin	Creepage kN	Top	Colour	Clamp & Stud	Unit	Weight	Box/ Drawing Pallet
<b>15kV Vertical Line Posts</b>										
553239	DTR 15kV Vertical Tie Top Line Post	DTR	Korea	312mm	12.5	Tie Top	Grey	Separate	Each	4.0kg 6/120 DTR-LPCN-15SK
553093	DTR 15kV Vertical Clamp Top Line Post	DTR	Korea	312mm	12.5	Clamp Top	Grey	Separate	Each	4.4kg 6/120 DTR-LPV-15SK
<b>15kV Horizontal Clamp Line Post</b>										
553107	DTR 15kV Horizontal Clamp Top Line Post	DTR	Korea	312mm	12.5	Clamp Top	Grey	Separate	Each	4.3kg 6/120 DTR-LPH-15SK

Part Number	Description	Brand	Origin	Conductor Range	Length	Width	Construction	Unit	Weight	Box Qty	Drawing
<b>Clamp options for DTR 15kV Line Posts (sold separately)</b>											
553727	DTR 13-27mm Trunnion Clamp	DTR	Korea	13-27mm	135mm	98mm	Aluminium	Each	650g	6	DTR-ATC-106
461792	AX 10-38mm Trunnion Clamp	AX	NZ	10-38mm	127mm	98mm	Aluminium	Each	450g	12	D330-0501

Part Number	Description	Brand	Origin	Length	Diameter	Fixings	Unit	Weight	Box/ Drawing Pallet
<b>Stud options for DTR 15kV Line Posts (sold separately)</b>									
553662	DTR 48mm Line Post Stud	DTR	Korea	48mm	M20	FW/SW/FN	Each	300g	96 STD48M20
553581	DTR 160mm Line Post Stud	DTR	Korea	160mm	M20	FW/SW/FN	Each	700g	72 STD160M20
553697	DTR 200mm Line Post Stud	DTR	Korea	200mm	M20	FW/SW/FN	Each	850g	48 STD200M20
<b>Gain Bases for DTR 15kV Line Posts (sold separately)</b>									
553174	DTR Vertical Gain Base	DTR	Korea	300mm			Each	4.5kg	6/60 DTR-GBV
553182	DTR Horizontal Gain Base	DTR	Korea	300mm			Each	3.3kg	6/60 DTR-GBH



15KV POLYMER LINE POST INSULATOR (TIE TOP)

Part Number	Description	Brand	Origin	Creepage	kN	Top	Colour	Unit	Weight	Box/Pallet	Drawing
553778	DTR 15kV Vertical Tie Top Line Post	DTR	Korea	540mm	12.5	Tie Top	Grey	Each	2.5kg	6/120	DTR-LPCN-15SK-SP
includes	M16 Stud Bolt Set	DTR	Korea					Each	0.5kg		STD160M16

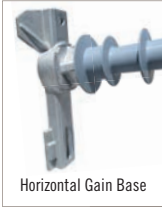


## 25KV POLYMER LINE POST INSULATORS (TIE TOP & CLAMP TOP)

Part Number	Description	Brand	Origin	Creepage kN	Top	Colour	Clamp & Stud	Unit	Weight	Box/ Pallet	Drawing	
<b>25kV Vertical Line Posts</b>												
553247	DTR 25kV Vertical Tie Top Line Post	DTR	Korea	506mm	12.5	Tie Top	Grey	Separate	Each	4.1kg	6/120	DTR-LPFN-25SK
553115	DTR 25kV Vertical Clamp Top Line Post	DTR	Korea	506mm	12.5	Clamp Top	Grey	Separate	Each	4.7kg	6/120	DTR-LPV-25SK
<b>25kV Horizontal Clamp Line Post</b>												
553123	DTR 25kV Hor Clamp Top Line Post	DTR	Korea	506mm	12.5	Clamp Top	Grey	Separate	Each	4.3kg	6/120	DTR-LPH-25SK

Part Number	Description	Brand	Origin	Conductor Range	Length	Width	Construction	Unit	Weight	Box Qty	Drawing
<b>Clamp options for DTR 25kV Line Posts (sold separately)</b>											
553727	DTR 13-27mm Trunnion Clamp	DTR	Korea	13-27mm	135mm	98mm	Aluminium	Each	650g	6	DTR-ATC-106
461792	AX 10-38mm Trunnion Clamp	AX	NZ	10-38mm	127mm	98mm	Aluminium	Each	450g	12	D330-0501

Part Number	Description	Brand	Origin	Length	Diameter	Fixings	Unit	Weight	Box/ Pallet	Drawing
<b>Stud options for DTR 25kV Line Posts (sold separately)</b>										
553662	DTR 48mm Line Post Stud	DTR	Korea	48mm	M20	FW/SW/FN	Each	300g	96	STD48M20
553581	DTR 160mm Line Post Stud	DTR	Korea	160mm	M20	FW/SW/FN	Each	700g	72	STD160M20
553697	DTR 200mm Line Post Stud	DTR	Korea	200mm	M20	FW/SW/FN	Each	850g	48	STD200M20
<b>Gain Bases for DTR 25kV Line Posts (sold separately)</b>										
553174	DTR Vertical Gain Base	DTR	Korea	300mm			Each	4.5kg	6/60	DTR-GBV
553182	DTR Horizontal Gain Base	DTR	Korea	300mm			Each	3.3kg	6/60	DTR-GBH



35kV Horizontal Clamp Top Line Post – clamp supplied separately

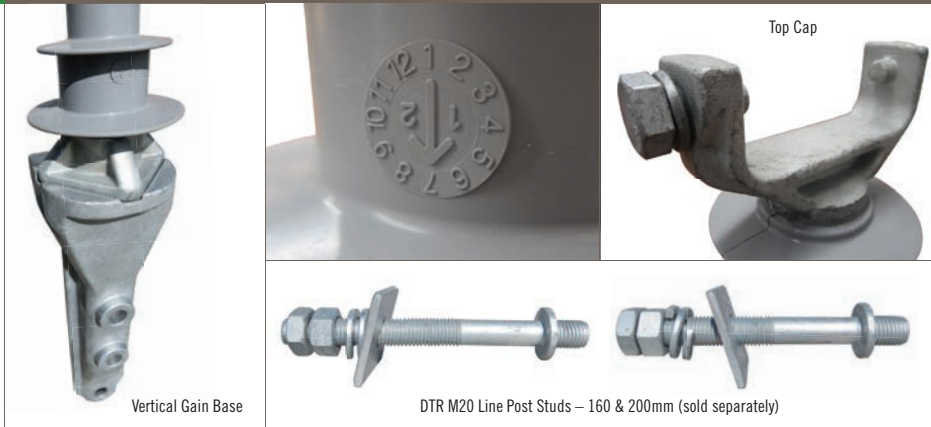
**35KV POLYMER LINE POST INSULATORS (TIE TOP & CLAMP TOP)**

Part Number	Description	Brand	Origin	Creepage	kN	Top	Colour	Clamp & Stud	Unit	Weight	Box/ Pallet	Drawing
<b>35kV Vertical Line Posts</b>												
553255	DTR 35kV Vertical Tie Top Line Post	DTR	Korea	602mm	12.5	Tie Top	Grey	Separate	Each	4.3kg	6/120	DTR-LPFN-35SK
553131	DTR 35kV Vertical Clamp Top Line Post	DTR	Korea	602mm	12.5	Clamp Top	Grey	Separate	Each	4.9kg	6/120	DTR-LPV-35SK
<b>35kV Horizontal Clamp Line Post</b>												
553158	DTR 35kV Horizontal Clamp Top Line Post	DTR	Korea	602mm	12.5	Clamp Top	Grey	Separate	Each	4.9kg	6/120	DTR-LPH-35SK

Part Number	Description	Brand	Origin	Conductor Range	Length	Width	Construction	Unit	Weight	Box Qty	Drawing
<b>Clamp options for DTR 35kV Line Posts (sold separately)</b>											
553727	DTR 13-27mm Trunnion Clamp	DTR	Korea	13-27mm	135mm	98mm	Aluminium	Each	650g	6	DTR-ATC-106
461792	AX 10-38mm Trunnion Clamp	AX	NZ	10-38mm	127mm	98mm	Aluminium	Each	450g	12	D330-0501

Part Number	Description	Brand	Origin	Length	Diameter	Fixings	Unit	Weight	Box/ Pallet	Drawing
<b>Stud options for DTR 35kV Line Posts (sold separately)</b>										
553662	DTR 48mm Line Post Stud	DTR	Korea	48mm	M20	FW/SW/FN	Each	300g	96	STD48M20
553581	DTR 160mm Line Post Stud	DTR	Korea	160mm	M20	FW/SW/FN	Each	700g	72	STD160M20
553697	DTR 200mm Line Post Stud	DTR	Korea	200mm	M20	FW/SW/FN	Each	850g	48	STD200M20
<b>Gain Bases for DTR 35kV Line Posts (sold separately)</b>										
553174	DTR Vertical Gain Base	DTR	Korea	300mm			Each	4.5kg	6/60	DTR-GBV
553182	DTR Horizontal Gain Base	DTR	Korea	300mm			Each	3.3kg	6/60	DTR-GBH

## DTR 69kV LINE POSTS (Tie Top & Clamp Top)



### 69kV POLYMER LINE POST INSULATORS (TIE TOP & CLAMP TOP)

Part Number	Description	Brand	Origin	Creepage kN	Top	Colour	Clamp & Stud	Unit	Weight	Box/ Pallet	Drawing	
<b>69kV Vertical Line Posts</b>												
553166	DTR 69kV Vertical Tie Top Line Post	DTR	Korea	1387mm	11.0	Tie Top	Grey	Separate	Each	14.4kg	1/60	DTR-LPFN-69SK
553212	DTR 69kV Vertical Clamp Top Line Post	DTR	Korea	1387mm	11.0	Clamp Top	Grey	Separate	Each	14.4kg	1/60	DTR-LPV-69SK
<b>69kV Horizontal Clamp Line Post</b>												
553220	DTR 69kV Horizontal Clamp Top Line Post	DTR	Korea	1387mm	11.0	Clamp Top	Grey	Separate	Each	14.4kg	1/60	DTR-LPH-69SK

Part Number	Description	Brand	Origin	Conductor Range	Length	Width	Construction	Unit	Weight	Box Qty	Drawing
<b>Clamp options for DTR 69kV Line Posts (sold separately)</b>											
553727	DTR 13-27mm Trunnion Clamp	DTR	Korea	13-27mm	135mm	98mm	Aluminium	Each	650g	6	DTR-ATC-106
461792	AX 10-38mm Trunnion Clamp	AX	NZ	10-38mm	127mm	98mm	Aluminium	Each	450g	12	D330-0501

Part Number	Description	Brand	Origin	Length	Diameter	Fixings	Unit	Weight	Box/ Pallet	Drawing
<b>Stud options for DTR 69kV Line Posts (sold separately)</b>										
553662	DTR 48mm Line Post Stud	DTR	Korea	48mm	M20	FW/SW/FN	Each	300g	96	STD48M20
553581	DTR 160mm Line Post Stud	DTR	Korea	160mm	M20	FW/SW/FN	Each	700g	72	STD160M20
553697	DTR 200mm Line Post Stud	DTR	Korea	200mm	M20	FW/SW/FN	Each	850g	48	STD200M20
<b>Gain Bases for DTR 69kV Line Posts (sold separately)</b>										
553174	DTR Vertical Gain Base	DTR	Korea	300mm			Each	4.5kg	6/60	DTR-GBV
553182	DTR Horizontal Gain Base	DTR	Korea	300mm			Each	3.3kg	6/60	DTR-GBH



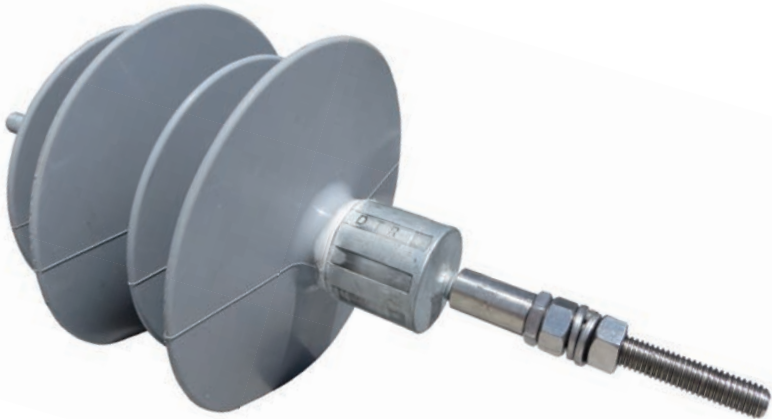
TR208 25kV Station Post

**15-220KV POLYMER STATION POST INSULATORS**

Part Number	Description	Brand	Origin	Rated	Creepage	Length	kN	Sheds	Colour	Weight	Box Qty	Drawing
<b>15kV Station Post</b>												
553263	DTR TR205 15kV Station Post	DTR	Korea	15kV	529mm	254mm	12.5	5	Grey	3.2kg	6	DTR-TR205SK
<b>25kV Station Post</b>												
553271	DTR TR208 25kV Station Post	DTR	Korea	25kV	824mm	357mm	12.5	7	Grey	4.1kg	6	DTR-TR208SK
<b>35kV Station Post</b>												
553298	DTR TR210 35kV Station Post	DTR	Korea	35kV	1117mm	457mm	12.5	9	Grey	4.5kg	6	DTR-TR210SK
<b>46kV Station Post</b>												
553301	DTR TR214 46kV Station Post	DTR	Korea	46kV	1436mm	559mm	12.5	11	Grey	5.5kg	6	DTR-TR214SK
<b>69kV Station Post</b>												
553328	DTR TR216 69kV Station Post	DTR	Korea	69kV	1884mm	762mm	12	15	Grey	7.7kg	6	DTR-TR216SK
<b>150kV Station Post</b>												
553352	DTR TR219 150kV Station Post	DTR	Korea	150kV	4128mm	1704mm	8	24	Grey	20.4kg	1	DTR-TR219SK
<b>220kV Station Post</b>												
553360	DTR TR312 220kV Station Post	DTR	Korea	220kV	5854mm	2336mm	5.5	34	Grey	30.2kg	1	DTR-TR312SK



Avon Crucifix Bracket



DTR Crucifix Standoff

**GALVANISED STEEL CRUCIFIX BRACKET & POLYMER STANDOFF**

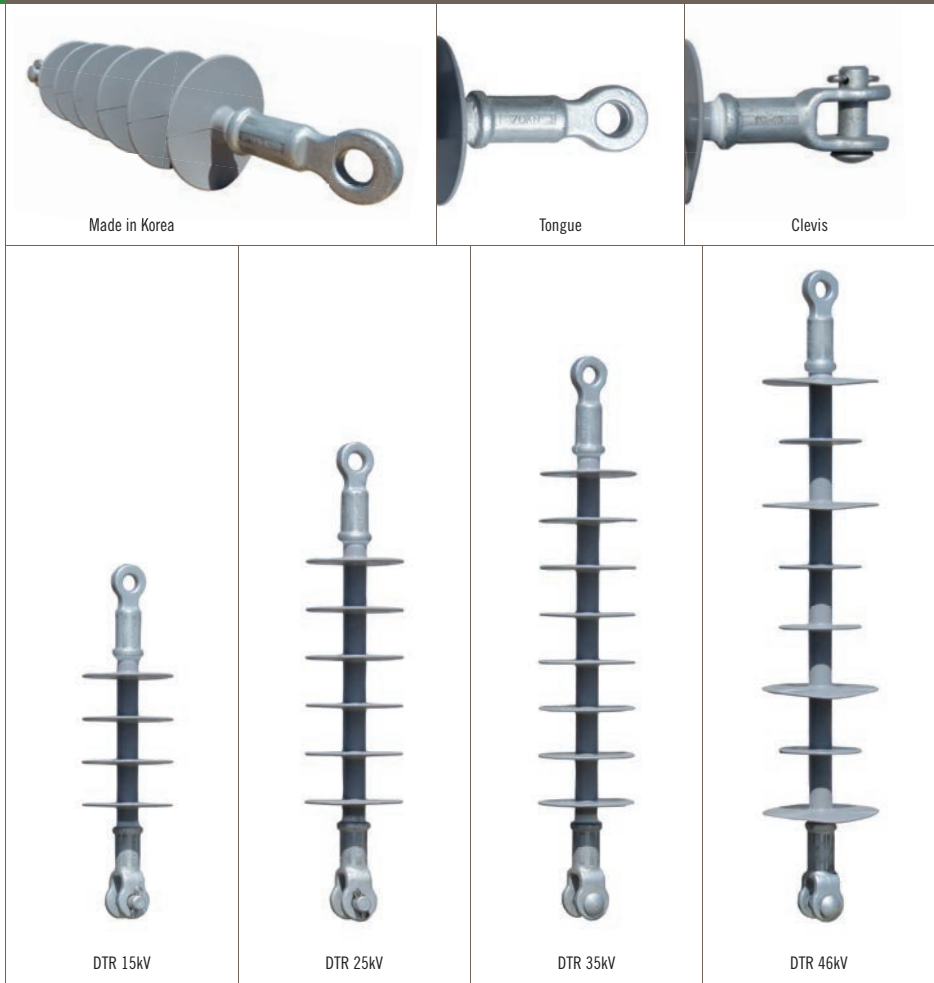
Part Number	Description	Brand	Origin	Length	Width	Thick	Holes	Unit	Weight	Pack Qty	Drawing
<b>Crucifix Bracket (HDG to 4680:2006)</b>											
537055	Avon 11kV Crucifix Bracket only	Avon	NZ	920mm	340mm	6mm	14mm	Each	4.8kg	5	AA18206
Part Number	Description	Brand	Origin	Rated	Creepage Length	Stud	Colour	Unit	Weight	Box/Pallet	Drawing
<b>Polymer Standoff for 11kV Crucifix (IEC 61109)</b>											
553069	DTR 15kV Crucifix Standoff	DTR	Korea	15kV	550mm	328mm	M12	Grey	Each	1.8kg	6/300 ISA3-0550-GSS



## CLEVIS THIMBLES & POLYMER STRAIN BUNDLES

Part Number	Description	Brand	Origin	Strength	Length	Int Width	Loop	Unit	Weight	Box Qty	Drawing
<b>Clevis Thimbles</b>											
536342	AX Aluminium Clevis Thimble	AX	China	70kN	132mm	30mm	57mm	Each	470g	30	D374-2140
536393	AX Galv Steel Clevis Thimble	AX	China	70kN	146mm	25mm	57mm	Each	650g	30	D374-2142
<b>HDG Thimble</b>											
536407	AX 16mm Galv Thimble	AX	NZ		80mm	16mm	57mm	Each	100g	10	
<b>Preassembled Polymer Strain Bundles</b>											
553336	DTR 15kV Polymer Strain + AX Aluminium Clevis + Avon 32/200M16 Eye Bolt								2.1kg	10	
553344	DTR 15kV Polymer Strain + AX Galv Steel Clevis + Avon 32/200M16 Eye Bolt								2.3kg	10	





## POLYMER STRAIN INSULATORS

Part Number	Description	Brand	Origin	Rated kN	End Fittings	Creepage	Sheds	Length	Colour	Weight	Box/ Pallet	Drawing
<b>Polymer Strains (IEC 61109)</b>												
553018	DTR 15kV Polymer Strain	DTR	Korea	15kV	70 Tongue & Clevis	459	4	347	Grey	0.8kg	10/640	ISA7-0459-AGH
553026	DTR 25kV Polymer Strain	DTR	Korea	25kV	70 Tongue & Clevis	693	6	442	Grey	1.3kg	10/600	ISB7-0693-AGH
553034	DTR 35kV Polymer Strain	DTR	Korea	35kV	70 Tongue & Clevis	927	8	536	Grey	1.4kg	10/600	ISC7-0927-AGH
553603	DTR 46kV Polymer Strain	DTR	Korea	46kV	70 Tongue & Clevis	1070	8	644	Grey	1.8kg	8/224	ISC9-1070-CAB



**69KV POLYMER STRAIN INSULATORS**

Part Number	Description	Brand	Origin	Rated kN	End Fittings	Creepage (mm)	Sheds	Length (mm)	Colour	Weight	Box/ Pallet	Drawing
<b>69kV Polymer Strains (IEC 61109)</b>												
553700	DTR 69kV Polymer Strain	DTR	Korea	69kV	70 Tongue & Clevis	2205	13	864	Grey	2.9kg	1/144	ISD7-2205-BAB
553379	DTR 69kV L011745 Strain	DTR	Korea	69kV	120 Ball & Socket	2070	19	800	Grey	4.4kg	1	SCGL019-A6800
553395	DTR 69kV L011746Y Strain	DTR	Korea	69kV	120 Y Clevis & Eye	2070	19	821	Grey	4.9kg	1	SCGL019-A2800
553387	DTR 69kV L011746 Strain	DTR	Korea	69kV	120 Ball & Socket	2449	17	859	Grey	5.4kg	1	SCVL017-A6800
553409	DTR 69kV L066096 Strain	DTR	Korea	69kV	160 Eye & Eye	1658	15	855	Grey	4.6kg	1	SEHL015-B1100



Ball &amp; Socket Suspension Insulator

Y Clevis Suspension Insulator

Eye Eye Strain Insulator

## POLYMERIC SUSPENSION INSULATORS FOR TRANSMISSION

Part Number	Description	Brand	Origin	Rated	Creep (mm)	Strength (kN)	Length (mm)	Sheds	Reference	Colour	Weight	Drawing
<b>110kV Suspension Strains</b>												
553417	Ball & Socket	DTR	Korea	115kV	3754	120	1232	35	L011760	Grey	7.1kg	SCGL035-A6801
553425	Y Clevis	DTR	Korea	115kV	3754	120	1253	35	L011760Y	Grey	7.6kg	SCGL035-A2801
553433	Ball & Socket	DTR	Korea	115kV	3893	120	1214	27	L011761	Grey	8.8kg	SCGL027-A6801
553441	Ball & Socket	DTR	Korea	115kV	3754	210	1241	35	L011770	Grey	8.0kg	SFGL035-B6801
553468	Y Clevis	DTR	Korea	115kV	3754	210	1262	35	L011770Y	Grey	8.5kg	SFVL035-B2801
553476	Ball & Socket	DTR	Korea	115kV	3893	210	1226	27	L011771	Grey	9.0kg	SFVL027-B6801
<b>220kV Suspension Strains</b>												
553484	Ball & Socket	DTR	Korea	230kV	7121	120	2096	67	L011762	Grey	11.9kg	SCGL067-A6811
553492	Ball & Socket	DTR	Korea	230kV	7606	120	2137	53	L011763	Grey	13.0kg	SCVL053-A6811
553506	Ball & Socket	DTR	Korea	230kV	7121	210	2105	67	L011772	Grey	12.4kg	SFGL067-B6811
553514	Ball & Socket	DTR	Korea	230kV	7607	210	2149	53	L011773	Grey	14.5kg	SCGL053-B6811
<b>400kV Suspension Strains</b>												
553522	Ball & Socket	DTR	Korea	500kV	12804	120	3554	121	L011764	Grey	18.5kg	SCGL121-A6813
553530	Ball & Socket	DTR	Korea	500kV	13301	120	3557	93	L011765	Grey	21.7kg	SCVL093-A6813
553549	Ball & Socket	DTR	Korea	500kV	12804	210	3563	121	L011774	Grey	19.5kg	SFGL121-B6813
553557	Ball & Socket	DTR	Korea	500kV	13301	210	3569	93	L011775	Grey	22.7kg	SFVL093-B6813



DTR 12kV Class 1 (CA12/10.HD)



Made in Korea



32mm Top



Bracket



Base Fitting

12KV POLYMER SURGE ARRESTERS (IEC 60099-4)

Part Number	Description	Brand	Origin	Rated Voltage	Rated Current	MCOV	Top Fitting	Bracket	Colour	Box/ Pallet	Drawing
<b>12kV Surge Arresters</b>											
553042	DTR 12kV 10kA Class 1	DTR	Korea	12kV	10kA	10.2kV	32mm	Nema	Grey	3/168	CA12/10.HD
553077	DTR 12kV 10kA Class 1	DTR	Korea	12kV	10kA	10.2kV	100mm	Nema	Grey	3/168	CA12/10.HD100
553204	DTR 12kV 10kA Class 2	DTR	Korea	12kV	10kA	9.6kV	32mm	Nema	Grey	3/168	CA12/10.2D



DTR 15kV (CA15/10.2D)

**15KV POLYMER SURGE ARRESTER (IEC 60099-4)**

Part Number	Description	Brand	Origin	Rated Current	MCOV	Top Fitting	Bracket Colour	Box/ Pallet	Drawing
<b>15kV Surge Arrester</b>									
553646	DTR 15kV 10kA Class 2	DTR	Korea	15kV 10kA	12.0kV	32mm	Nema Grey	3/168	CA15/10.2D



DTR 18kV Alt Sheds (CA18/10.1D)



DTR 18kV (CA18/10.2D)

**18KV POLYMER SURGE ARRESTERS (IEC 60099-4)**

Part Number	Description	Brand	Origin	Rated Current	MCOV	Top Fitting	Bracket Colour	Box/ Pallet	Drawing	
<b>18kV Surge Arresters</b>										
553050	DTR 18kV 10kA Class 1 (Alt Sheds)	DTR	Korea	18kV 10kA	15.3kV	32mm	Nema	Grey	3/168	CA18/10.1D
553565	DTR 18kV 10kA Class 2	DTR	Korea	18kV 10kA	15.3kV	32mm	Nema	Grey	3/168	CA18/10.2D



Stainless Steel

Hinge

DTR Polymer 150BIL EDO with Stainless Steel Fittings

DTR EDO Coupling Insulator

Coupling Insulator Top View

**POLYMER EDO DROPOUTS**

Part Number	Description	Brand	Origin	Rated BIL	Current	Creepage	Length	Colour	Weight	Box/ Pallet	Drawing
<b>EDO – Stainless Steel Fittings</b>											
553743	DTR 27kV 150BIL Stainless EDO	DTR	Korea	27kV 150kV	100A	580mm	382mm	Grey	5.4kg	1/60	SCSNL15-AP1-100C
<b>EDO – Mixed Metal Fittings</b>											
553190	DTR 27kV 150BIL EDO Cutout	DTR	Korea	27kV 150kV	100A	580mm	382mm	Grey	5.4kg	1/60	CS0270-0580-100E
<b>EDO Coupling Insulator</b>											
Part Number	Description	Brand	Origin	Rated kN	Leakage	Length	Colour	Weight	Box/ Pallet	Drawing	
553098	EDO Coupling Insulator	DTR	Korea	15kV 9.8	450mm	265mm	Grey	1.2kg	20/600	CI265-120AL	