



Black (for copper)



White (for aluminium)

CABLE OXIDE REMOVAL BRUSHES

Part Number	Description	Brand	Origin	Colour	Length	Diameter	Unit	Weight	Box Qty
For Cleaning Copper Conductor prior to crimping									
523054	Fulton ORB-1 Oxide Film Removal Brush	Fulton	Australia	Black	130mm	50mm	Each	140g	15
For Cleaning Aluminium Conductor prior to crimping									
523062	Fulton ORB-2 Oxide Film Removal Brush	Fulton	Australia	White	130mm	50mm	Each	140g	15



12mm 1800mm 500micron Copper-Clad Earth Rod (to AS1572)



BC12 Brass Coupler



TPS12 Star Point



REB1210-70



REX16-120



REC35-120



DHT12 Driving Head



10/Tube

FULTON 12mm EARTH RODS & ACCESSORIES

Part Number	Description	Brand	Origin	Diameter	Length	Detail	Unit	Weight	Pack Qty	Drawing
12mm Copper-Clad Earth Rods (1.8 & 2.0m)										
523097	Fulton CDR-12-1800 Earth Rod	Fulton	Australia	12mm	1800mm	500micron CU to AS1572	Each	2.0kg	10	657-A4
523801	Fulton CDR-12-2000 Earth Rod	Fulton	Australia	12mm	2000mm	500micron CU to AS1572	Each	2.3kg	10	1310-A4
Accessories for 12mm Earth Rods										
523100	Fulton BC12 Brass Coupler	Fulton	Australia	Fit 12mm	70mm		Each	70g	20	615-A4
523119	Fulton TPS12 Star Point	Fulton	Australia	Fit 12mm	72mm		Each	100g	20	658-A4
523755	Fulton 12D-1 Brass Clip	Fulton	Australia	Fit 12mm			Each	20g	20	
523178	Fulton ERDP-1 Driving Pin	Fulton	Australia		32mm		Each	10g	25	1161-A4
523461	Fulton DHT12 Driving Head Tool	Fulton	Australia	Fit 12mm	102mm		Each	300g	5	659-A4
523488	Fulton K900DM12 Kango Driving Moil	Fulton	Australia	Fit12mm	227mm		Each	570g	1	1311-A4
Clamps for 12mm Earth Rods										
523070	Fulton REB1210-70 Clamp	Fulton	Australia		40mm	Cable Range 10-70mm ²	Each	100g	20	1240-A4
523844	Fulton REX16-120 Clamp	Fulton	Australia		64mm	Cable Range 16-120mm ²	Each	260g	10	945-A4
523089	Fulton REC35-120 Clamp	Fulton	Australia		67mm	Cable Range 35-120mm ²	Each	150g	10	611-A4

FULTON 15 & 19mm Earth Rods & Accessories



FULTON 15mm/19mm EARTH RODS & ACCESSORIES

Part Number	Description	Brand	Origin	Diameter	Length	Detail	Unit	Weight	Pack Qty	Drawing
15mm Copper-Clad Earth Rod										
524131	Fulton CDR-15-1800 Earth Rod	Fulton	Australia	15mm	1800mm	500micron CU to AS1572	Each	2.3kg	10	
Accessories for 15mm Earth Rods										
523518	Fulton BC15 Brass Coupler	Fulton	Australia	Fit 15mm	70mm	–	Each	80g	20	614-A4
523577	Fulton TPS15 Star Point	Fulton	Australia	Fit 15mm	72mm	–	Each	95g	10	617-A4
524158	Fulton DHT15 Driving Head Tool	Fulton	Australia	Fit 15mm	102mm	–	Each	300g	1	1239-A4
524360	Fulton K900DM15 Driving Moil	Fulton	Australia	Fit 15mm	222mm	–	Each	570g	1	1309-A4
Clamps for 15mm Earth Rods										
523844	Fulton REX16-120 Clamp	Fulton	Australia		40mm	Cable Range 16-120mm ²	Each	260g	10	945-A4
524352	Fulton RET25-120/3 Clamp for 3 Cables	Fulton	Australia		74mm	Cable Range 25-120mm ²	Each	700g	10	1290-A4
523089	Fulton REC35-120 Clamp	Fulton	Australia		67mm	Cable Range 35-120mm ²	Each	150g	10	611-A4
19mm Copper-Clad Earth Rod										
524123	Fulton CDR-19-1800 Earth Rod	Fulton	Australia	19mm	1800mm	500micron CU to AS1572	Each	4.5kg	5	1236-A4
Accessories for 19mm Earth Rods										
523135	Fulton BC19 Brass Coupler	Fulton	Australia	Fit 19mm	95mm	–	Each	140g	20	1301-A4
523151	Fulton TP19 Earth Rod Point	Fulton	Australia	Fit 19mm	60mm	–	Each	95g	10	1304-A4
523143	Fulton DHT19 Driving Head Tool	Fulton	Australia	Fit 19mm	102mm	–	Each	300g	1	1305-A4
524379	Fulton K900DM19 Driving Moil	Fulton	Australia	Fit 19mm	222mm	–	Each	570g	1	1306-A4
Clamps for 19mm Earth Rods										
523615	Fulton EC2 Earth Clamp	Fulton	Australia		110mm	Cable Range 16-25mm ²	Each	485g	10	1308-A4
523844	Fulton REX16-120 Clamp	Fulton	Australia		40mm	Cable Range 16-120mm ²	Each	260g	10	945-A4
524352	Fulton RET25-120/3 Clamp for 3 Cables	Fulton	Australia		74mm	Cable Range 25-120mm ²	Each	700g	10	1290-A4



Good Earth



Fulton Earthing Rod Pit

FULTON EARTH ROD PIT & EARTHING COMPOUND

Part Number	Description	Brand	Origin	Footprint	Depth	Detail	Unit	Weight	Pack Qty	Drawing
Earth Rod Inspection Pit										
523763	Fulton PT205 Pit + Lid	Fulton	Australia	256x256	212mm	Black Poly + Grey HD Lid	Each	1.8kg	1	927-A4
Earthing Compound										
523704	Fulton 15kg Good Earth	Fulton	Australia	Covers 0.03m ³	—	Bentonite/ Gypsum mix	Bag	15kg	1	



SL-4/12



TODL-7/19



SCI-6/19 One Bolt



CTC-1



CTC-2



SC2-6/19 Two Bolt

TAPS, LUGS, SERVICE & CTC BOLTED CONNECTORS

Part Number	Description	Brand	Origin	Construction	Conductor	Conductor	Unit Weight	Box Qty
Aluminium Service Taps								
524344	Fultron SL-4/12 Service Tap	Fultron	Australia	Aluminium	7/3.00-7/4.75	9.0-14.3mm	Each 100g	10
524166	Fultron SL-7/19 Service Tap	Fultron	Australia	Aluminium	7/4.5-19/3.75	13.5-18.8mm	Each 200g	10
Aluminium Lugs								
524174	Fultron TODL-7/19 Lug	Fultron	Australia	Aluminium	7/2.5-19/3.75	7.0-19.0mm	Each 375g	10
524182	Fultron TODL-7/19ET 'Bling' Lug	Fultron	Australia	Bright ETP Ali	7/2.5-19/3.75	7.0-19.0mm	Each 375g	10
SC Aluminium Service Connectors								
524190	Fultron SC1-6/19 One-Bolt	Fultron	Australia	Ali + Copper Loop	7/2.25-19/3.75	6.75-18.75mm	Each 200g	10
524204	Fultron SC2-6/19 Two-Bolt	Fultron	Australia	Ali + Copper Loop	7/2.25-19/3.75	6.75-18.75mm	Each 400g	10
CTC Consumer Tee Connectors								
524212	Fultron CTC-1 Single Leg	Fultron	Australia	Aluminium	7/2.25-19/3.75	6.75-18.75mm	Each 175g	10
524220	Fultron CTC-1 Double Leg	Fultron	Australia	Aluminium	7/2.25-19/3.75	6.75-18.75mm	Each 260g	10



TOD-7/19



TOD-4/12 Double



TOD-7/19 Triple



CV4P



CV6P



CV9P

TEE-OFF & RISING MAIN CONNECTORS

Part Number	Description	Brand	Origin	Construction	Stainless	Conductor	Length	Unit	Weight	Box Qty
Tee-Off Connectors										
524018	Fulton TOD-4/12 Single Bolted Tee-Off	Fulton	Australia	Aluminium	304	4-12mm ²	51	Each	200g	50
523453	Fulton TOD-7/19 Single Bolted Tee-Off	Fulton	Australia	Aluminium	304	7-19mm ²	70	Each	237g	50
523003	Fulton TOD-4/12 Double Bolted Tee-Off	Fulton	Australia	Aluminium	304	4-12mm ²	70	Each	400g	50
523011	Fulton TOD-7/19 Double Bolted Tee-Off	Fulton	Australia	Aluminium	304	7-19mm ²	95	Each	475g	30
523720	Fulton TOD-7/19 Triple Bolted Tee-Off	Fulton	Australia	Aluminium	304	7-19mm ²	143	Each	800g	10
3-Piece Rising Main Connectors										
524026	Fulton CV3P Rising Main	Fulton	Australia	Gunmetal ETP	316	50-95mm ²	58	Each		15
524034	Fulton CV4P Rising Main	Fulton	Australia	Gunmetal ETP	316	120-240mm ²	58	Each		15
524042	Fulton CV5P Rising Main	Fulton	Australia	Gunmetal ETP	316	120-300mm ²	58	Each		15
524050	Fulton CV6P Rising Main	Fulton	Australia	Gunmetal ETP	316	120-240mm ²	70	Each	950g	15
523747	Fulton CV8P Rising Main	Fulton	Australia	Gunmetal ETP	316	300-800mm ²	77	Each		15
524069	Fulton CV9P Rising Main	Fulton	Australia	Gunmetal ETP	316	240-500mm ²	86	Each	1.4kg	15



B22T



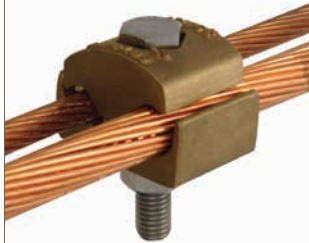
B24T



B28T



CT03/11



SCT025



DCT025

SPLIT BOLT CONNECTORS & PARALLEL GROOVE CLAMPS

Part Number	Description	Brand	Origin	Construction	Conductor	Conductor	Conductor	Unit	Weight	Box Qty
Split Bolt Connectors										
524239	Fulton B22T Split Bolt Clamp	Fulton	Australia	ETP Brass	16mm ²	5.1mm	7/.064	Each		50
524247	Fulton B24T Split Bolt Clamp	Fulton	Australia	ETP Brass	35mm ²	8.3mm	7/.104	Each		25
524255	Fulton B25T Split Bolt Clamp	Fulton	Australia	ETP Brass	70mm ²	10.7mm	19/.083	Each		25
524263	Fulton B26T Split Bolt Clamp	Fulton	Australia	ETP Brass	95mm ²	12.6mm	19/.101	Each		10
524271	Fulton B28T Split Bolt Clamp	Fulton	Australia	ETP Brass	185mm ²	17.64mm	37/.130	Each		4

Part Number	Description	Brand	Origin	Joining	Length	Construction	Unit	Weight	Box Qty
Parallel Groove Clamps									
524298	Fulton CT03/11 M8 Single Bolt PG Clamp	Fulton	Australia	10-70mm ²	25mm	CU + 304 Fixings	Each	120g	10
524301	Fulton DCT03/11 M8 Double Bolt PG Clamp	Fulton	Australia	10-70mm ²	51mm	CU + 304 Fixings	Each	240g	10
524328	Fulton SCT025 M12 Single Bolt PG Clamp	Fulton	Australia	35-150mm ²	34mm	CU + 304 Fixings	Each	400g	5
524336	Fulton DCT025 M12 Double Bolt PG Clamp	Fulton	Australia	35-150mm ²	71mm	CU + 304 Fixings	Each	790g	5

FULTON SHEAR LOCK Clamp



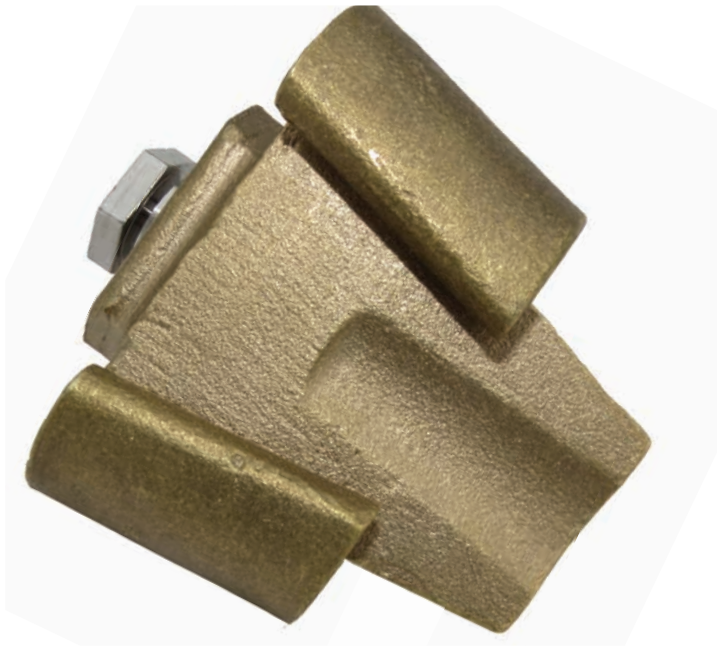
Top View



Back View



Bottom View



One Size Fits All ECW-1 (25-70mm²)

FULTON SHEAR LOCK WEDGE CLAMP

Part Number	Description	Brand	Origin	Conductor Range	Length	Construction	Bolts	Unit Weight	Pack Qty	Drawing
One-Size-Fits-All Wedge Clamp										
524107	Fulton ECW-1 Shear Lock	Fulton	Australia	25-70mm ²	56mm	Gunmetal ETP	304 Stainless	Each 950g	25	595-A4