





This 2014 expanded and updated catalogue showcases the current entire range of products that New Zealand Insulators is offering ex-stock, in 2014.

There is an expanded range offering for DTR/Avon/Fulton and Payer with the addition of the all-new product range from GIG. The widest range of Cooper Bussmann fuses and carriers all distributed in New Zealand by NZI for Bussmann by EATON. We offer the most comprehensive range ex stock from our factory in Temuka and Auckland distribution centre.

You will also find an extensive range of NZI porcelain products, all made in New Zealand, including our range of NZI line posts.

As you will see, we've been working hard to expand NZI's range proposition beyond just porcelain insulators – although these definitely still form the core of our offer.

Wholesalers will probably find the NZI 2104 LV Pocket Book more useful – which has Trade Prices listed – and copies of the Pocket Book are freely available through NZI or via our website.

This 2014 catalogue is available as a PDF file both in its entirety, and by brand online at [www.nzinsulators.co.nz](http://www.nzinsulators.co.nz). PDF drawings for many of the products can also be downloaded.

As our product range continues to evolve during 2014, we'll use the 'NZI Network Updates' in ElectroLink magazine, to update you on developments.

Thank you all for supporting New Zealand Insulators, our customers are definitely the central focus of our business.

It's good to be winning back some market share, its hard work and we certainly appreciate the support.

**Chris van der Werff**, General Manager  
New Zealand Insulators Limited  
Mobile 027 7066 205  
Email [chris@nzinsulators.co.nz](mailto:chris@nzinsulators.co.nz)

## NZI BRAND made in Temuka

NZI Reels, Spike & Bundles	2-3
NZI 510/511 & Bundles	4-5
NZI 11kV Insulators & Bundles	6-11
NZI 22kV Insulators	13, 15
NZI 33kV Insulators	16-19
NZI 66kV Insulators	22
NZI 110kV Insulators	22
NZI Standoffs	23
NZI Station Posts	25
NZI Guy Strains	37
NZI Lineguard Disconnects	61
NZI Mini Wedge Fuseholder	61
NZI Rewireable & HRC Cutouts	63-64
NZI Fuseholders	68, 72
NZI DMC Standoffs	94
NZI Busbar Supports	95
NZI Porcelain Connectors	96
NZI Porcelain Lampholders	97
NZI MCB Safety Bases	98

## AX BRAND made for NZI, multiple sources

AX Spindles	26-27
AX Clevis Thimbles	38

## AVON INDUSTRIES made in Whangarei

Avon Shackle Straps & U Shackles	2
Avon Line Hardware & Crucifix	28-29
Avon Earth Rods	55

## PAYER PREFORMS made in Canada

Payer Armour Rods	31
Payer Line Guards & Line Splices	32
Payer Aluminium Deadends	33
Payer Full Tension Deadends	34
Payer Neoprene Deadends	35
Payer Guy Grips & Guy Locks	36

## DTR ELECTRIC made in Korea

DTR 15kV Polymer Line Posts	12
DTR 25kV Polymer Line Posts	14
DTR 35kV Polymer Line Posts	20
DTR 69kV Polymer Line Posts	21
DTR Station Posts	24
DTR Crucifix Standoff	28
DTR Polymer Strains & Bundles	38-39
DTR Suspension Strains	40-41
DTR Surge Arresters	44-46
DTR Polymer EDO Dropouts	48

## GIG GLASS DISCS made in Ukraine

GIG Glass Discs for Distribution	42
GIG Glass Discs for Transmission	43

## NGK STANGER made in Melbourne

NGK-S LV Isolators	47
NGK-S EDO Dropouts	49
NGK-S HVI Solid Links	50
NGK-S ABS & SF6 Switches	51-52
NGK-S FSD Disconnects	62

## FULTON INDUSTRIES made in Gosford

Fulton Scratch Brushes	30
Fulton Earth Rods	53-54
Fulton Earthing Pits	56
Fulton Bolted Connectors	57-59
Fulton Shear Lock Wedge Clamp	60

## COOPER BUSSMANN made in India/UK

Red Spot Fuseholders	65, 67, 72
Camaster Fuseholders	65, 67, 72
Bussmann HRC Fuselinks	66-74, 77-92
Bussmann Expulsion Fuses	93
Bussmann DIN Switches	76
NZ Insulators Fusible Solutions	99
HRC Fuselinks Compatibility Chart	100

## EFEN SWITCHES made in Germany

Efen DIN Switches	75
-------------------	----

## AVON SHACKLES & NZI Reel BUNDLES



### SHACKLE STRAPS & U SHACKLES

Part Number	Description	Brand	Origin	Length (mm)	Width (mm)	Thick (mm)	Holes	HDG (mm)	Unit	Weight	Box Qty	Drawing
<b>Shackle Straps</b>												
537004	Avon AA20001 Shackle Strap 7"	Avon	NZ	180	32	3	14	To 4680:2006	Each	140g	100	AA20001
537012	Avon AA20009 Shackle Strap #11	Avon	NZ	170	30	2	14	To 4680:2006	Each	85g	200	AA20009
537020	Avon AA20011 Shackle Strap #8 Offset	Avon	NZ	180	32	3	18	To 4680:2006	Each	130g	100	AA20011
<b>U Shackles</b>												
537039	Avon AA23001 210 U Shackle Small	Avon	NZ	85	32	3	14	To 4680:2006	Each	160g	100	AA23001
537047	Avon AA23002 205 U Shackle Large	Avon	NZ	105	32	3	14	To 4680:2006	Each	210g	50	AA23002
537063	Avon AA23003 320 U Shackle Extra Large	Avon	NZ	132	40	5	14	To 4680:2006	Each	500g	30	AA23003

### PRE-ASSEMBLED REEL BUNDLES

Part Number	Description	Brands	Origin	Status	Unit	Weight	Box Qty
<b>Reel &amp; Shackle Strap Bundles</b>							
102148	NZI 210 Reel + Avon 7" Shackle Strap + 2 x M12 110 Bolt	NZI/Avon	NZ	Assembled	Bundle	750g	20
102180	NZI 205 Reel + Avon 7" Shackle Strap + 2 x M12 110 Bolt	NZI/Avon	NZ	Assembled	Bundle	1.1kg	10
<b>Reel &amp; U Shackle Bundles</b>							
102121	NZI 210 Reel + Avon Small U Shackle + M12 110 Bolt	NZI/Avon	NZ	Assembled	Bundle	550g	20
102156	NZI 205 Reel + Avon E/Large U Shackle + M12 110 Bolt	NZI/Avon	NZ	Assembled	Bundle	1.2kg	10

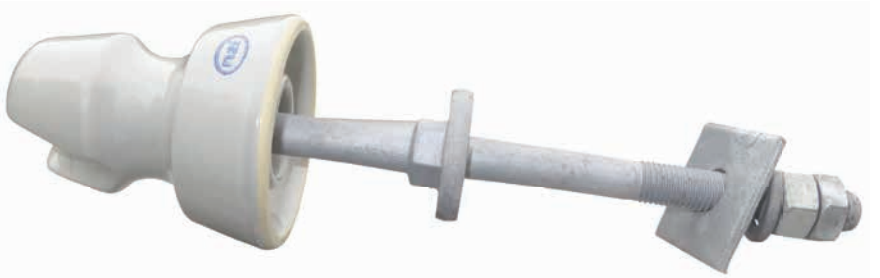


LV PORCELAIN REELS & SPIKE

Part Number	Description	Brand	Origin	Rated	Groove	Load	Fixing	Glaze	Unit	Weight	Box Qty	Drawing
<b>Reels</b>												
109029	NZI 120 Reel	NZI	NZ	650V	13mm	4.5kN	14mm Diameter	Clear	Each	130g	30	S1326
109207	NZI 210 Reel	NZI	NZ	650V	10mm	6kN	17.5mm Diameter	Grey	Each	220g	80	S1331
109061	NZI 220 Reel	NZI	NZ	650V	19mm	5.5kN	17mm Diameter	Grey	Each	295g	80	S1332
109088	NZI 224 Trurip Reel	NZI	NZ	650V	25.5mm	13.5kN	17.5mm Diameter	Grey	Each	385g	42	S1098
109010	NZI 205 Reel	NZI	NZ	3.3kV	18mm	10kN	17.5mm Diameter	Grey	Each	540g	42	S1330
<b>Spike</b>												
100501	NZI 103 Spike	NZI	NZ		16mm Hole	4kN	Coach Screw	Grey	Each	325g	50	D267-0502



510 + Cordeau Spindle + Washer



511 + Cordeau Spindle + Washer



Preassembled



Full AX Fittings



16/Box

**PRE-ASSEMBLED LV INSULATOR BUNDLES**

Part Number	Description	Brands	Origin	Assembled?	Unit	Weight	Box Qty
<b>510 Bundle</b>							
102164	NZI 510 Insulator + AX 5/8 Cordeau Spindle + AX Oiled Leather Washer	NZI/AX	NZ	Assembled	Bundle	1.1kg	16
<b>511 Bundle</b>							
102172	NZI 511 Insulator + AX 5/8 Cordeau Spindle + AX Oiled Leather Washer	NZI/AX	NZ	Assembled	Bundle	1.1kg	16



**LV PORCELAIN PIN-TYPE INSULATORS (TIE TOP)**

Part Number	Description	Brand	Origin	Groove	Top	Line Voltage	Colour	Thread	Unit	Weight	Box/Pallet	Drawing
<b>LV Pin-Type Tie Top</b>												
102040	NZI 510 (Round Top)	NZI	NZ	26mm	Tie Top	0.4kV-3kV	Grey	5/8" Cordeau	Each	580g	30/1200	S1003
102067	NZI 511 (Square Top)	NZI	NZ	32mm	Tie Top	0.4kV-3kV	Grey	5/8" Cordeau	Each	600g	30/1200	S1656

Part Number	Description	Brand	Origin	Length	Strength	Diameter	Head	Thread	Unit	Weight	Box/Pallet	Drawing
<b>Spindle for 510/511</b>												
540358	5/8 Cordeau Spindle	AX	China	118/145mm	3.3kN	M16	Steel	5/8" Cordeau	Each	485g	30/1200	D374-2009

Part Number	Description	Brand	Origin	Detail	OD	Internal Diameter	Unit	Weight	Pack Qty
<b>Washer for 510/511</b>									
540234	Leather Washer	AX	NZ	Oiled Leather	23mm	5/8" (15.9mm)	Each	1.2g	90



1540



140B1



821



5/8" Cordeau

## 11KV PORCELAIN PIN-TYPE INSULATORS (TIE TOP)

Part Number	Description	Brand	Origin	Creepage	Top	Groove	Colour	Thread	Unit	Weight	Box/ Pallet	Drawing
<b>1540 Pin-Type Tie Top</b>												
104574	NZI 1540W	NZI	NZ	300mm	Tie Top	32mm	Grey	1 & 3/8"	Each	2.0kg	6/144	S1071-24
<b>Spindle for 1540</b>												
540455	AX 140B1 Spindle	AX	China	171/134mm	10kN	M20	Lead	1 & 3/8"	Each	1.6kg	12/480	D374-2130
Part Number	Description	Brand	Origin	Creepage	Top	Groove	Colour	Thread	Unit	Weight	Box Qty	Drawing
<b>821 Pin-Type Tie Top</b>												
103608	NZI 821	NZI	NZ	185mm	Tie Top	23mm	Grey	5/8" Cordeau	Each	930g	18	S1310
<b>Spindle for 821</b>												
540358	AX 5/8 Cordeau Spindle	AX	China	118/145mm	3.3kN	M16	Steel	5/8" Cordeau	Each	485g	30/1200	D374-2009





1130W26



1130W32



1" NEMA Nylon



1" NEMA Lead



1130W26 Bundle



1130W32 Bundle

**11KV PORCELAIN PIN-TYPE INSULATORS (TIE TOP)**

Part Number	Description	Brand	Origin	Creepage	Top	Groove	Colour	Thread	Unit	Weight	Box/ Pallet	Drawing
<b>11kV Pin Insulators</b>												
103160	NZI 1130W (26mm Groove)	NZI	NZ	250mm	Tie Top	26mm	Grey	1 Inch SLHT	Each	1.5kg	12/288	M1022-14
104507	NZI 1130W (32mm Groove)	NZI	NZ	250mm	Tie Top	32mm	Grey	1 Inch SLHT	Each	1.5kg	12/288	M1022-17

Part Number	Description	Brand	Origin	Length	Strength	Diameter	Head	Thread	Unit	Weight	Box Qty	Drawing
<b>Spindles for 1130</b>												
536164	AX Nema 1" Nylon Spindle	AX	China	152/146mm	6kN	M20	Nylon	1 Inch SLHT	Each	1.0kg	12/288	D374-2134
536326	AX Nema 1" Lead Spindle	AX	China	152/146mm	6kN	M20	Lead	1 Inch SLHT	Each	1.1kg	12/288	D374-2118

<b>1130 Bundles</b>												
103837	NZI 1130W26 + AX Nema Nylon Spindle							Assembled Bundle	2.5kg	6		D750-0502
103934	NZI 1130W32 + AX Nema Nylon Spindle							Assembled Bundle	2.5kg	6		D750-0502
103403	NZI 1130W26 + AX Nema Lead Spindle							Assembled Bundle	2.5kg	6		D750-0502
103438	NZI 1130W32 + AX Nema Lead Spindle							Assembled Bundle	2.5kg	6		D750-0502



Made in NZ

11/285W32 with 32mm groove  
and radio silent glaze11/250W26 with 26mm groove  
and no radio silent glaze

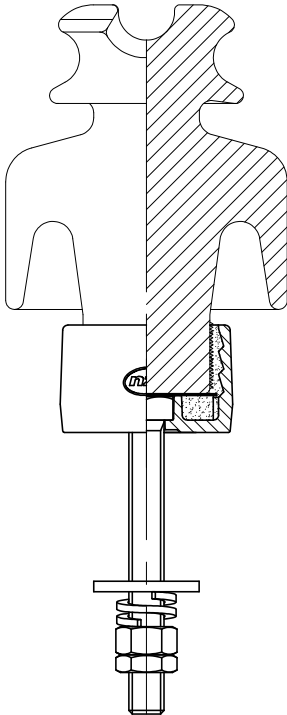
11/250W26 Economy Option



11/285W32

## 11kV PORCELAIN LINE POST INSULATORS (TIE TOP)

Part Number	Description	Brand	Origin	Creepage	Top	Groove	kN	Stud	Glaze	Unit	Weight	Box/ Pallet	Drawing
<b>11kV Economy* Tie Top Line Post</b>													
464740	NZI 11kV 250W26 Line Post	NZI	NZ	250mm	Tie Top	26mm	10	160mm M20	Grey	Each	6.5kg	3/144	D632-0578
* economy option with lower creepage, no radio silent, 26mm groove, 3mm washer + full nut only, in a cardboard box													
<b>11kV Tie Top Line Post</b>													
460818	NZI 11kV 285W32 Line Post	NZI	NZ	285mm	Tie Top	32mm	10	160mm M20	Grey	Each	7.0kg	3/144	D632-0551



11/305W32 Fog – 2014 Release



11/420W32 Ultra Premium

**11KV PORCELAIN LINE POST INSULATORS (TIE TOP)**

Part Number	Description	Brand	Origin	Creepage	Top	Groove	kN	Stud	Glaze	Unit	Weight	Box/ Drawing	Pallet
<b>11kV Fog Profile Tie Top Line Post (2014)</b>													
465410	NZI 11kV 305W32 Line Post	NZI	NZ	305mm	Tie Top	32mm	7	160mm M20	Grey	Each	6.5kg	2/80	D632-0579
<b>11kV Ultra Premium Tie Top Line Post</b>													
464314	NZI 11kV 420W32 Line Post	NZI	NZ	420mm	Tie Top	32mm	17.5	160mm M20	Grey	Each	8.4kg	1/40	D632-0564
464287	NZI 11kV 420W32 Line Post	NZI	NZ	420mm	Tie Top	32mm	17.5	190mm M20	Grey	Each	8.4kg	1/40	D632-0565

# NZI 1132T Pin-Type Clamp Top & Spindle



1132T

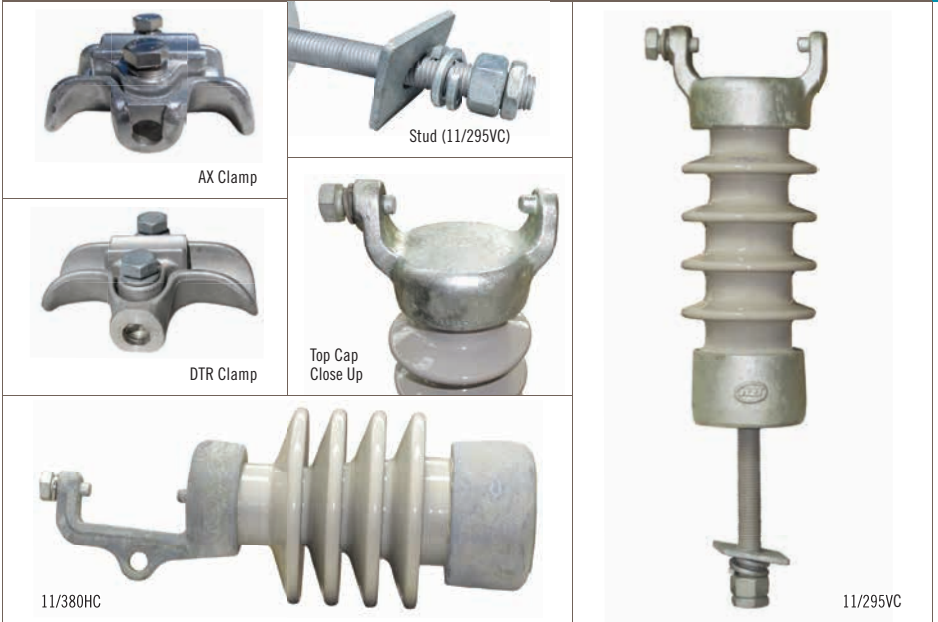
6/Box

R23 Steel Head

## 11kV PORCELAIN PIN-TYPE INSULATOR (CLAMP TOP)

Part Number	Description	Brand	Origin	Creepage	Top	Clamp	Glaze	Thread	Unit Weight	Box/ Pallet	Drawing
<b>11kV Pin-Type Clamp Top</b>											
104175	NZI 1132T Insulator	NZI	NZ	250mm	Cap & Pintle	Separate	Grey	BS Small Steel Head	Each 3.6kg	6/144	D351-0502
Part Number	Description	Brand	Origin	Conductor Range	Length	Width	Construction	Unit Weight	Box Qty	Drawing	
<b>Clamp for 1132T (sold separately)</b>											
465283	AX 10-38mm Special Clamp	AX	NZ	10-38mm	127mm	98mm	Aluminium	Each 450g	12	D330-0503	
Part Number	Description	Brand	Origin	Length	Strength	Diameter	Head	Thread	Unit Weight	Box/ Pallet	Drawing
<b>Spindle for 1132T</b>											
540528	AX R23 Spindle	AX	UK	170/130mm	10kN	M18	Steel	BS Small Steel Head	Each 1.1kg	12/240	D374-2027





**11KV PORCELAIN LINE POST INSULATORS (CLAMP TOP)**

Part Number	Description	Brand	Origin	Creepage kN	Top	Clamp	Glaze	Stud	Unit	Weight	Box/Pallet	Drawing
<b>11kV Vertical Clamp Line Post</b>												
464589	NZI 11kV 295VC Line Post	NZI	NZ	295mm	9.5	Cap & Pintle	Separate	Grey M20	160mm	Each	7.0kg	3/72 D724-0526
<b>11kV Horizontal Clamp Line Post</b>												
462411	NZI 11kV 380HC Line Post	NZI	NZ	380mm	12	Cap & Pintle	Separate	Grey	Separate	Each	12.0kg	1/40 D725-0510

Part Number	Description	Brand	Origin	Conductor Length Range	Width	Construction	Unit	Weight	Box Qty	Drawing
<b>Clamp options for 11kV Line Posts (sold separately)</b>										
461792	AX 10-38mm Trunnion Clamp	AX	NZ	10-38mm	127mm	98mm Aluminium	Each	450g	12	D330-0501
553727	DTR 13-27mm Trunnion Clamp	DTR	Korea	13-27mm	135mm	98mm Aluminium	Each	650g	6	DTR-ATC-106

Part Number	Description	Brand	Origin	Length	Diameter	Fixings	Unit	Weight	Box Qty	Drawing
<b>Stud options for 11/380HC Horizontal Post (sold separately)</b>										
465291	AX 45mm Line Post Stud	AX	NZ	45mm	M20	SW/FN	Each	400g	24	D330-2013
465305	AX 160mm Line Post Stud	AX	NZ	160mm	M20	FW/SW/FN/HN	Each	710g	18	D330-2022
465313	AX 205mm Line Post Stud	AX	NZ	205mm	M20	FW/SW/FN/HN	Each	800g	12	D330-2059

## DTR 15kV LINE POSTS (Tie Top &amp; Clamp Top)



## 15KV POLYMER LINE POST INSULATORS (TIE TOP &amp; CLAMP TOP)

Part Number	Description	Brand	Origin	Creepage kN	Top	Colour	Clamp & Stud	Unit	Weight	Box/ Pallet	Drawing	
<b>15kV Vertical Line Posts</b>												
553239	DTR 15kV Vertical Tie Top Line Post	DTR	Korea	312mm	12.5	Tie Top	Grey	Separate	Each	4.0kg	6/120	DTR-LPCN-15SK
553093	DTR 15kV Vertical Clamp Top Line Post	DTR	Korea	312mm	12.5	Clamp Top	Grey	Separate	Each	4.4kg	6/120	DTR-LPV-15SK
553778	DTR Vertical Tie Top Line Post	DTR	Korea	540mm	30	Tie Top	Grey	Separate	Each	2.5kg	6/120	DTR-LPCN-15SK-SP
<b>15kV Horizontal Clamp Line Post</b>												
553107	DTR 15kV Horizontal Clamp Top Line Post	DTR	Korea	312mm	12.5	Clamp Top	Grey	Separate	Each	4.3kg	6/120	DTR-LPH-15SK

Part Number	Description	Brand	Origin	Conductor Range	Length	Width	Construction	Unit	Weight	Box Qty	Drawing
<b>Clamp options for DTR 15kV Line Posts (sold separately)</b>											
553727	DTR 13-27mm Trunnion Clamp	DTR	Korea	13-27mm	135mm	98mm	Aluminium	Each	650g	6	DTR-ATC-106
461792	AX 10-38mm Trunnion Clamp	AX	NZ	10-38mm	127mm	98mm	Aluminium	Each	450g	12	D330-0501

Part Number	Description	Brand	Origin	Length	Diameter	Fixings	Unit	Weight	Box/ Pallet	Drawing	
<b>Stud options for DTR 15kV Line Posts (sold separately)</b>											
553662	DTR 48mm Line Post Stud	DTR	Korea	48mm	M20	FW/SW/FN	Each	300g	96	STD48M20	
553581	DTR 160mm Line Post Stud	DTR	Korea	160mm	M20	FW/SW/FN	Each	700g	72	STD160M20	
553697	DTR 200mm Line Post Stud	DTR	Korea	200mm	M20	FW/SW/FN	Each	850g	48	STD200M20	
<b>Gain Bases for DTR 15kV Line Posts (sold separately)</b>											
553174	DTR Vertical Gain Base	DTR	Korea	300mm			Each	4.5kg	6/60	DTR-GBV	
553182	DTR Horizontal Gain Base	DTR	Korea	300mm			Each	3.3kg	6/60	DTR-GBH	



## 22kV PORCELAIN PIN INSULATOR (TIE TOP)

Part Number	Description	Brand	Origin	Creepage	Top	Groove	Colour	Thread	Unit	Weight	Box/ Pallet	Drawing
<b>22kV Pin-Type Tie Top</b>												
106941	NZI 22/450	NZI	NZ	450mm	Tie Top	32mm	Grey	Pattern C	Each	3.6kg	6/120	S2466-1

Part Number	Description	Brand	Origin	Length	Strength	Diameter	Head	Thread	Unit	Weight	Box/ Pallet	Drawing
<b>Spindles for ALP22/450</b>												
538213	AX M20 Pattern C Spindle (20mm)	AX	China	200/165mm	10kN	M20	Lead	Pattern C	Each	2.2kg	6/240	D374-2084
538205	AX M24 Pattern C Spindle (24mm)	AX	China	200/165mm	11kN	M24	Lead	Pattern C	Each	2.4kg	6/240	D374-2085

## DTR 25kV LINE POSTS (Tie Top &amp; Clamp Top)



## 25KV POLYMER LINE POST INSULATORS (TIE TOP &amp; CLAMP TOP)

Part Number	Description	Brand	Origin	Creepage kN	Top	Colour	Clamp & Stud	Unit	Weight	Box/ Pallet	Drawing	
<b>25kV Vertical Line Posts</b>												
553247	DTR 25kV Vertical Tie Top Line Post	DTR	Korea	506mm	12.5	Tie Top	Grey	Separate	Each	4.1kg	6/120	DTR-LPFN-25SK
553115	DTR 25kV Vertical Clamp Top Line Post	DTR	Korea	506mm	12.5	Clamp Top	Grey	Separate	Each	4.7kg	6/120	DTR-LPV-25SK
<b>25kV Horizontal Clamp Line Post</b>												
553123	DTR 25kV Hor Clamp Top Line Post	DTR	Korea	506mm	12.5	Clamp Top	Grey	Separate	Each	4.3kg	6/120	DTR-LPH-25SK

Part Number	Description	Brand	Origin	Conductor Range	Length	Width	Construction	Unit	Weight	Box Qty	Drawing
<b>Clamp options for DTR 25kV Line Posts (sold separately)</b>											
553727	DTR 13-27mm Trunnion Clamp	DTR	Korea	13-27mm	135mm	98mm	Aluminium	Each	650g	6	DTR-ATC-106
461792	AX 10-38mm Trunnion Clamp	AX	NZ	10-38mm	127mm	98mm	Aluminium	Each	450g	12	D330-0501

Part Number	Description	Brand	Origin	Length	Diameter	Fixings	Unit	Weight	Box/ Pallet	Drawing	
<b>Stud options for DTR 25kV Line Posts (sold separately)</b>											
553662	DTR 48mm Line Post Stud	DTR	Korea	48mm	M20	FW/SW/FN	Each	300g	96	STD48M20	
553581	DTR 160mm Line Post Stud	DTR	Korea	160mm	M20	FW/SW/FN	Each	700g	72	STD160M20	
553697	DTR 200mm Line Post Stud	DTR	Korea	200mm	M20	FW/SW/FN	Each	850g	48	STD200M20	
<b>Gain Bases for DTR 25kV Line Posts (sold separately)</b>											
553174	DTR Vertical Gain Base	DTR	Korea	300mm			Each	4.5kg	6/60	DTR-GBV	
553182	DTR Horizontal Gain Base	DTR	Korea	300mm			Each	3.3kg	6/60	DTR-GBH	





22/490W32



22/630W32



22/490VC

**22KV PORCELAIN LINE POST INSULATORS (TIE TOP & CLAMP TOP)**

Part Number	Description	Brand	Origin	Creepage	kN	Top	Groove	Glaze	Stud	Unit	Weight	Box/ Drawing	Pallet
<b>22kV Tie Top Line Posts</b>													
464619	NZI 22kV 490W32 Line Post	NZI	NZ	490mm	10	Tie Top	32mm	Grey	205mm M20	Each	9.0kg	1/40	D632-0573
464368	NZI 22kV 630W32 Ultra Premium Line Post	NZI	NZ	630mm	17.5	Tie Top	32mm	Grey	205mm M20	Each	12.4kg	1/40	D632-0563

Part Number	Description	Brand	Origin	Creepage	kN	Top	Clamp	Glaze	Stud	Unit	Weight	Box/ Drawing	Pallet
<b>22kV Vertical Clamp Line Post</b>													
465321	NZI 22kV 490VC Line Post	NZI	NZ	490mm	12	Cap & Pintle	Separate	Grey	205mm M20	Each	14.0kg	1/40	D724-0527

Part Number	Description	Brand	Origin	Conductor Range	Length	Width	Construction	Unit	Weight	Box Qty	Drawing
<b>Clamp options for 22/490VC (sold separately)</b>											
461792	AX 10-38mm Trunnion Clamp	AX	NZ	10-38mm	127mm	98mm	Aluminium	Each	450g	12	D330-0501
553727	DTR 13-27mm Trunnion Clamp	DTR	Korea	13-27mm	135mm	98mm	Aluminium	Each	650g	6	DTR-ATC-106



## 33KV PORCELAIN PIN-TYPE INSULATORS (TIE TOP)

Part Number	Description	Brand	Origin	Creepage	Top	Groove	Colour	Thread	Unit	Weight	Box/ Pallet	Drawing
<b>33kV Pin-Type Tie Top</b>												
112526	NZI 3370	NZI	NZ	500mm	Tie Top	32mm	Grey	BS Large Steel Head	Each	5.2kg	3/96	D327-0503
115029	NZI 33/920	NZI	NZ	920mm	Tie Top	32mm	Grey	BS Large Steel Head	Each	16.2kg	1/32	D718-0503
<b>44kV Pin-Type Tie Top</b>												
111376	NZI 4490	NZI	NZ	665mm	Tie Top	38mm	Grey	BS Large Steel Head	Each	9.5kg	3/45	D343-0504
Part Number	Description	Brand	Origin	Length	Strength	Diameter	Head	Thread	Unit	Weight	Box/ Pallet	Drawing
<b>Spindle for all three 33kV Insulators</b>												
540463	AX R31 Steel Spindle	AX	China	305/ 178mm	10kN	M22	Steel	BS Large Steel Head	Each	2.9kg	6/288	D374-2023
<b>Shorter Spindle option for 3370 only</b>												
540706	AX R29 Steel Spindle	AX	UK	230/ 152mm	10kN	M22	Steel	BS Large Steel Head	Each	1.9kg	6/240	D374-2110



Longer 205mm Stud now on all NZI 33kV Vertical Posts



1/Box



33/915W32



33/915W40



33/955W32 Ultra Premium

**33KV PORCELAIN LINE POST INSULATORS (TIE TOP)**

Part Number	Description	Brand	Origin	Creepage	Top	Groove	kN	Stud	Glaze	Unit	Weight	Box/ Drawing	Pallet
<b>33kV Tie Top Line Posts</b>													
464570	NZI 33kV 915W32 Line Post	NZI	NZ	915mm	Tie Top	32mm	13.5	205mm M20	Grey	Each	15.4kg	1/40	D632-0570
464562	NZI 33kV 915W40 Line Post	NZI	NZ	915mm	Tie Top	40mm	13.5	205mm M20	Grey	Each	15.4kg	1/40	D632-0571
<b>33kV Ultra Premium Tie Top Line Post</b>													
464376	NZI 33kV 955W32 Line Post	NZI	NZ	955mm	Tie Top	32mm	13	205mm M20	Grey	Each	17.4kg	1/40	D632-0562

## NZI 33kV PIN-TYPE Clamp Top



### 33KV PORCELAIN PIN-TYPE INSULATORS (CLAMP TOP)

Part Number	Description	Brand	Origin	Creepage Top	Clamp	Glaze	Thread	Unit	Weight	Box/Pallet	Drawing	
<b>33kV Pin-Type Clamp Top</b>												
112550	NZI 3372	NZI	NZ	510mm	Cap & Pintle	Separate	Grey	BS Large Steel Head	Each	8.2kg	2/32	D347-0504
<b>44kV Pin-Type Clamp Top</b>												
111414	NZI 4492	NZI	NZ	635mm	Cap & Pintle	Separate	Grey	BS Large Steel Head	Each	14.1kg	1/32	D341-0506
Part Number	Description	Brand	Origin	Conductor Range	Length	Width	Construction	Unit	Weight	Box Qty	Drawing	
<b>Clamp for 3372 &amp; 4492 (sold separately)</b>												
465283	AX 10-38mm Special Clamp	AX	NZ	10-38mm	127mm	98mm	Aluminium	Each	450g	12	D330-0503	
Part Number	Description	Brand	Origin	Length	Strength	Diameter	Head	Thread	Unit	Weight	Box/Pallet	Drawing
<b>Spindle for both Insulators</b>												
540463	AX R31 Steel Spindle	AX	China	305/178mm	10kN	M22	Steel	BS Large Steel Head	Each	2.9kg	6/288	D374-2023
<b>Shorter Spindle option for 3372 only</b>												
540706	AX R29 Steel Spindle	AX	UK	230/152mm	10kN	M22	Steel	BS Large Steel Head	Each	1.9kg	6/240	D374-2110

## NZI 33kV LINE POSTS Clamp Top



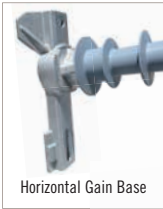
### 33kV PORCELAIN LINE POST INSULATORS (CLAMP TOP)

Part Number	Description	Brand	Origin	Creepage kN	Top	Clamp	Glaze Stud	Unit Weight	Box/ Pallet	Drawing
<b>33kV Vertical Clamp Line Post</b>										
464597	NZI 33kV 940VC Line Post	NZI	NZ	940mm	10	Cap & Pintle	Separate Grey M20	205mm	Each 15.5kg	1/30 D724-0524
465836	NZI 33kV 1075VC Line Post	NZI	NZ	1075mm	10	Cap & Pintle	Separate Grey M20	205mm	Each 16.5kg	1/30 D724-0530

Part Number	Description	Brand	Origin	Creepage kN	Top	Clamp	Glaze Stud	Unit Weight	Box/ Pallet	Drawing
<b>33kV Horizontal Clamp Line Post</b>										
465208	NZI 33kV 995HC Line Post	NZI	NZ	995mm	12.5	Cap & Pintle	Separate Grey	Separate	Each 21.0kg	1/32 D725-0514

Part Number	Description	Brand	Origin	Conductor Range	Length	Width	Construction	Unit Weight	Box Qty	Drawing
<b>Clamp options for 33kV Line Posts (sold separately)</b>										
461792	AX 10-38mm Trunnion Clamp	AX	NZ	10-38mm	127mm	98mm	Aluminium	Each 450g	12	D330-0501
553727	DTR 13-27mm Trunnion Clamp	DTR	Korea	13-27mm	135mm	98mm	Aluminium	Each 650g	6	DTR-ATC-106

Part Number	Description	Brand	Origin	Length	Diameter	Fixings	Unit Weight	Box Qty	Drawing
<b>Stud options for 33/995HC (sold separately)</b>									
465291	AX 45mm Line Post Stud	AX	NZ	45mm	M20	SW/FN	Each 400g	24	D330-2013
465305	AX 160mm Line Post Stud	AX	NZ	160mm	M20	FW/SW/FN/HN	Each 710g	18	D330-2022
465313	AX 205mm Line Post Stud	AX	NZ	205mm	M20	FW/SW/FN/HN	Each 800g	12	D330-2059

DTR 35kV LINE POSTS (Tie Top & Clamp Top)

35kV Horizontal Clamp Top Line Post – clamp supplied separately

## 35KV POLYMER LINE POST INSULATORS (TIE TOP &amp; CLAMP TOP)

Part Number	Description	Brand	Origin	Creepage	kN	Top	Colour	Clamp & Stud	Unit	Weight	Box/ Pallet	Drawing
<b>35kV Vertical Line Posts</b>												
553255	DTR 35kV Vertical Tie Top Line Post	DTR	Korea	602mm	12.5	Tie Top	Grey	Separate	Each	4.3kg	6/120	DTR-LPFN-35SK
553131	DTR 35kV Vertical Clamp Top Line Post	DTR	Korea	602mm	12.5	Clamp Top	Grey	Separate	Each	4.9kg	6/120	DTR-LPV-35SK
<b>35kV Horizontal Clamp Line Post</b>												
553158	DTR 35kV Horizontal Clamp Top Line Post	DTR	Korea	602mm	12.5	Clamp Top	Grey	Separate	Each	4.9kg	6/120	DTR-LPH-35SK

Part Number	Description	Brand	Origin	Conductor Range	Length	Width	Construction	Unit	Weight	Box Qty	Drawing
<b>Clamp options for DTR 35kV Line Posts (sold separately)</b>											
553727	DTR 13-27mm Trunion Clamp	DTR	Korea	13-27mm	135mm	98mm	Aluminium	Each	650g	6	DTR-ATC-106
461792	AX 10-38mm Trunion Clamp	AX	NZ	10-38mm	127mm	98mm	Aluminium	Each	450g	12	D330-0501

Part Number	Description	Brand	Origin	Length	Diameter	Fixings	Unit	Weight	Box/ Pallet	Drawing
<b>Stud options for DTR 35kV Line Posts (sold separately)</b>										
553662	DTR 48mm Line Post Stud	DTR	Korea	48mm	M20	FW/SW/FN	Each	300g	96	STD48M20
553581	DTR 160mm Line Post Stud	DTR	Korea	160mm	M20	FW/SW/FN	Each	700g	72	STD160M20
553697	DTR 200mm Line Post Stud	DTR	Korea	200mm	M20	FW/SW/FN	Each	850g	48	STD200M20
<b>Gain Bases for DTR 35kV Line Posts (sold separately)</b>										
553174	DTR Vertical Gain Base	DTR	Korea	300mm			Each	4.5kg	6/60	DTR-GBV
553182	DTR Horizontal Gain Base	DTR	Korea	300mm			Each	3.3kg	6/60	DTR-GBH



## 69KV POLYMER LINE POST INSULATORS (TIE TOP & CLAMP TOP)

Part Number	Description	Brand	Origin	Creepage kN	Top	Colour	Clamp & Stud	Unit	Weight	Box/ Pallet	Drawing	
<b>69kV Vertical Line Posts</b>												
553166	DTR 69kV Vertical Tie Top Line Post	DTR	Korea	1387mm	11.0	Tie Top	Grey	Separate	Each	14.4kg	1/60	DTR-LPFN-69SK
553212	DTR 69kV Vertical Clamp Top Line Post	DTR	Korea	1387mm	11.0	Clamp Top	Grey	Separate	Each	14.4kg	1/60	DTR-LPV-69SK
<b>69kV Horizontal Clamp Line Post</b>												
553220	DTR 69kV Horizontal Clamp Top Line Post	DTR	Korea	1387mm	11.0	Clamp Top	Grey	Separate	Each	14.4kg	1/60	DTR-LPH-69SK

Part Number	Description	Brand	Origin	Conductor Range	Length	Width	Construction	Unit	Weight	Box Qty	Drawing
<b>Clamp options for DTR 69kV Line Posts (sold separately)</b>											
553727	DTR 13-27mm Trunnion Clamp	DTR	Korea	13-27mm	135mm	98mm	Aluminium	Each	650g	6	DTR-ATC-106
461792	AX 10-38mm Trunnion Clamp	AX	NZ	10-38mm	127mm	98mm	Aluminium	Each	450g	12	D330-0501

Part Number	Description	Brand	Origin	Length	Diameter	Fixings	Unit	Weight	Box/ Pallet	Drawing	
<b>Stud options for DTR 69kV Line Posts (sold separately)</b>											
553662	DTR 48mm Line Post Stud	DTR	Korea	48mm	M20	FW/SW/FN	Each	300g	96	STD48M20	
553581	DTR 160mm Line Post Stud	DTR	Korea	160mm	M20	FW/SW/FN	Each	700g	72	STD160M20	
553697	DTR 200mm Line Post Stud	DTR	Korea	200mm	M20	FW/SW/FN	Each	850g	48	STD200M20	
<b>Gain Bases for DTR 69kV Line Posts (sold separately)</b>											
553174	DTR Vertical Gain Base	DTR	Korea	300mm			Each	4.5kg	6/60	DTR-GBV	
553182	DTR Horizontal Gain Base	DTR	Korea	300mm			Each	3.3kg	6/60	DTR-GBH	

# NZI 69kV & 110kV LINE POSTS Clamp Top



Base Cap for both Vertical and Horizontal

Vertical Top Cap



110kV 2850HC Horizontal Line Post (clamp supplied separately)

## 110KV PORCELAIN LINE POST INSULATORS (CLAMP TOP)

Part Number	Description	Brand	Origin	Creepage	Strength	Top	Glaze	Fixing & Clamp	Unit	Weight	Box Qty	Drawing
<b>66kV Vertical Clamp Top Post</b>												
460419	NZI 66kV 1830VC Line Post	NZI	NZ	1830mm	10kN	Cap & Pintle	Grey	Separate	Each	37kg	1	D724-0518
<b>66kV Horizontal Clamp Top Post</b>												
460451	NZI 66kV 1830HC Line Post	NZI	NZ	1830mm	10kN	Cap & Pintle	Grey	Separate	Each	37kg	1	D725-0523
<b>110kV Vertical Clamp Top Post</b>												
460222	NZI 110kV 2850VC Line Post	NZI	NZ	2850mm	10kN	Cap & Pintle	Grey	Separate	Each	60kg	1	D724-0519
<b>110kV Horizontal Clamp Top Post</b>												
460265	NZI 110kV 2850HC Line Post	NZI	NZ	2850mm	10kN	Cap & Pintle	Grey	Separate	Each	60kg	1	D725-0524
Part Number	Description	Brand	Origin	Conductor Range	Length	Width	Construction	Unit	Weight	Box Qty	Drawing	
<b>Clamp for 66kV &amp; 110kV Line Posts (sold separately)</b>												
461792	AX 10-38mm Trunnion Clamp	AX	NZ	10-38mm <sup>2</sup>	127mm	98mm	Aluminium	Each	450g	12	D330-0501	





T-Insert 12kV



12kV



22kV



36kV



T-Insert



External Cap

**12-36KV PORCELAIN STANDOFF INSULATORS**

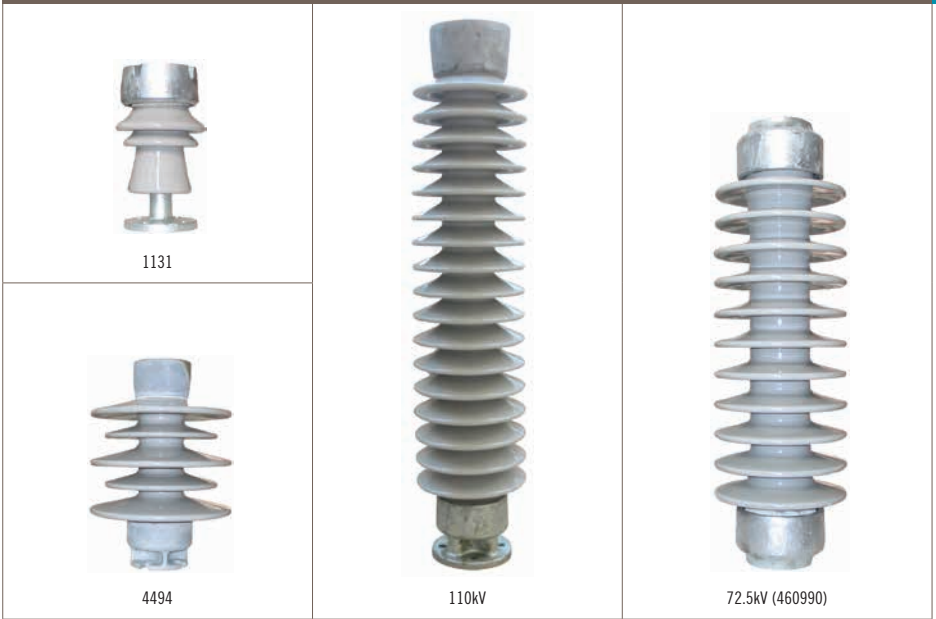
Part Number	Description	Brand	Origin	Creepage	Length	kN	End Fittings	Glaze	Unit	Weight	Box Qty	Drawing
<b>T-Insert Standoff</b>												
598263	NZI 12kV T-Insert	NZI	NZ	480mm	235mm	3.5	T Insert	Grey	Each	6.0kg	6	D412-0504
<b>External Cap Standoffs</b>												
598291	NZI 12kV Standoff	NZI	NZ	445mm	235mm	4	76CRS Caps	Grey	Each	5.9kg	4	D412-0529
598305	NZI 22kV Standoff	NZI	NZ	590mm	300mm	3	76CRS Caps	Grey	Each	6.8kg	3	D412-0531
598313	NZI 36kV Standoff	NZI	NZ	880mm	406mm	2	76CRS Caps	Grey	Each	9.0kg	3	D412-0527



TR208 25kV Station Post

## 15-220KV POLYMER STATION POST INSULATORS

Part Number	Description	Brand	Origin	Rated	Creepage	Length	kN	Sheds	Colour	Weight	Box Qty	Drawing
<b>15kV Station Post</b>												
553263	DTR TR205 15kV Station Post	DTR	Korea	15kV	529mm	254mm	12.5	5	Grey	3.2kg	6	DTR-TR205SK
<b>25kV Station Post</b>												
553271	DTR TR208 25kV Station Post	DTR	Korea	25kV	824mm	357mm	12.5	7	Grey	4.1kg	6	DTR-TR208SK
<b>35kV Station Post</b>												
553298	DTR TR210 35kV Station Post	DTR	Korea	35kV	1117mm	457mm	12.5	9	Grey	4.5kg	6	DTR-TR210SK
<b>46kV Station Post</b>												
553301	DTR TR214 46kV Station Post	DTR	Korea	46kV	1436mm	559mm	12.5	11	Grey	5.5kg	6	DTR-TR214SK
<b>69kV Station Post</b>												
553328	DTR TR216 69kV Station Post	DTR	Korea	69kV	1884mm	762mm	12	15	Grey	7.7kg	6	DTR-TR216SK
<b>150kV Station Post</b>												
553352	DTR TR219 150kV Station Post	DTR	Korea	150kV	4128mm	1704mm	8	24	Grey	20.4kg	1	DTR-TR219SK
<b>220kV Station Post</b>												
553360	DTR TR312 220kV Station Post	DTR	Korea	220kV	5854mm	2336mm	5.5	34	Grey	30.2kg	1	DTR-TR312SK



**11-72.5KV PORCELAIN STATION POST INSULATORS**

Part Number	Description	Brand	Origin	Creepage	Length	kN	Caps	Construction	Glaze	Weight	Box/ Pallet	Drawing
<b>11kV Station Post</b>												
104744	NZI 1131 11kV Station Post	NZI	NZ	265mm	228mm	6	76PCD	1 Piece	Grey	4.4kg	6/120	D712-0501
<b>36kV Station Posts</b>												
460001	NZI 4494 36kV Station Post	NZI	NZ	860mm	381mm	12	76PCD	1 Piece	Grey	20kg	1/32	D687-0547
460028	NZI 4494 Inverted 36kV Station Post	NZI	NZ	860mm	381mm	12	76PCD	1 Piece	Grey	20kg	1/32	D687-0593
462489	NZI 36kV Station Post	NZI	NZ	950mm	475mm	5	76PCD	1 Piece	Grey	16kg	1/40	D687-0531
<b>44kV Station Post</b>												
113514	NZI 4497 HD 44kV Station Post	NZI	NZ	813mm	381mm	11	76PCD	1 Piece	Grey	16kg	1/27	D400-0502
<b>72.5kV Station Posts</b>												
460990	NZI 72.5kV Station Post	NZI	NZ	1600mm	762mm	8	76PCD	1 Piece	Grey	39kg	1/20	D687-0588
460737	NZI 72.5kV Station Post (Pedestal Mount)	NZI	NZ	1880mm	770mm	7	127PCD	1 Piece	Grey	40kg	1/20	D687-0590
<b>110kV Station Posts</b>												
460168	NZI 110kV Station Post (Pedestal Mount)	NZI	NZ	2780mm	1104mm	4.5	127PCD	1 Piece	Grey	50kg	1/20	D687-0570



### GALVANISED STEEL SPINDLES FOR PIN-TYPE INSULATORS

Part Number	Description	Brand	Origin	Length	Diameter	kN	Head	Thread	Unit	Weight	Box/ Pallet	Drawing
<b>Spindle for 510, 511 &amp; 821</b>												
540358	AX 5/8 Cordeau Steel Head	AX	China	118/147mm	M16	3.3	Steel	5/8" Cordeau	Each	485g	30/1200	D374-2009
<b>Spindles for 1130W</b>												
536164	AX Nema 1" Nylon Head	AX	China	152/146mm	M20	6	Nylon	1 Inch SLHT	Each	1.0kg	12/480	D374-2134
536326	AX Nema 1" Lead Head	AX	China	152/146mm	M20	6	Lead	1 Inch SLHT	Each	1.1kg	12/480	D374-2118
541532	AX Extended Lead Head	AX	China	185/135mm	M20	6	Lead	1 Inch SLHT	Each	1.3kg	12/480	D374-2120
<b>Spindle for 1132T</b>												
540528	AX R23 Steel Head	AX	UK	170/130mm	M18	10	Steel	BS Small Steel Head	Each	1.1kg	12/240	D374-2027
<b>Spindle for 1540</b>												
540455	AX 140B1 Lead Head	AX	China	171/134mm	M20	10	Lead	1 & 3/8"	Each	1.6kg	12/480	D374-2130

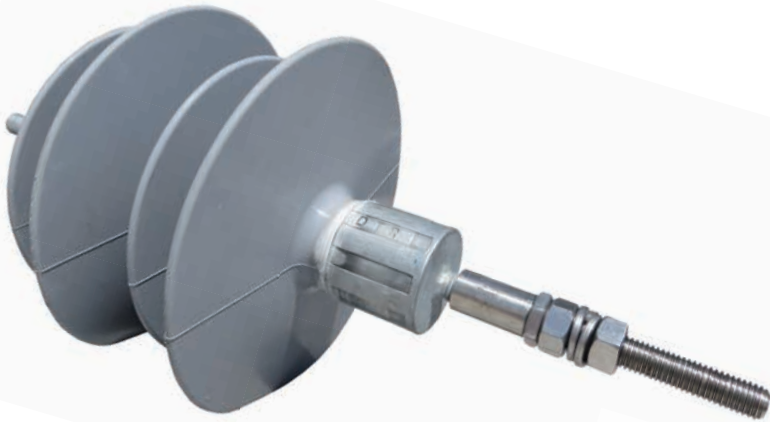


**GALVANISED STEEL SPINDLES FOR PIN-TYPE INSULATORS**

Part Number	Description	Brand	Origin	Length	Diameter	kN	Head	Thread	Unit	Weight	Box/ Drawing Pallet
<b>Spindles for ALP22/450</b>											
538213	AX M20 Pattern C Lead Head	AX	China	200/165mm	M20	10	Lead	Pattern C	Each	2.2kg	6/240 D374-2084
538205	AX M24 Pattern C Lead Head	AX	China	200/165mm	M24	11	Lead	Pattern C	Each	2.4kg	6/240 D374-2085
<b>Spindle for 3370, 33/920, 4490, 3372 &amp; 4492</b>											
540463	AX R31 Steel Head	AX	China	305/178mm	M22	10	Steel	BS Large Steel Head	Each	2.9kg	6/216 D374-2023
<b>Shorter Spindle option for 3370 &amp; 3372 only</b>											
540706	AX R29 Steel Head	AX	UK	230/152mm	M22	10	Steel	BS Large Steel Head	Each	1.9kg	6/240 D374-2110



Avon Crucifix Bracket



DTR Crucifix Standoff

### GALVANISED STEEL CRUCIFIX BRACKET & POLYMER STANDOFF

Part Number	Description	Brand	Origin	Length	Width	Thick	Holes	Unit	Weight	Pack Qty	Drawing
<b>Crucifix Bracket (HDG to 4680:2006)</b>											
537055	Avon 11kV Crucifix Bracket only	Avon	NZ	920mm	340mm	6mm	14mm	Each	4.8kg	5	AA18206
Part Number	Description	Brand	Origin	Rated	Creepage Length	Stud	Colour	Unit	Weight	Box/Pallet	Drawing
<b>Polymer Standoff for 11kV Crucifix (IEC 61109)</b>											
553069	DTR 15kV Crucifix Standoff	DTR	Korea	15kV	550mm	328mm M12	Grey	Each	1.8kg	6/300	ISA3-0550-GSS



Screw Anchors

Crossarm Braces



Eye Bolts



**GALVANISED STEEL LINE HARDWARE**

Part Number	Description	Brand	Origin	Length	Shaft	Helix Dia	Eye ID	Unit	Weight	Pack Qty	Drawing
<b>1.8mm Screw Anchors</b>											
536512	Avon 1.8/20/175 Screw Anchor	Avon	NZ	1.8m	M20	175mm	60mm	Each	6.0kg	1	AA05003
536520	Avon 1.8/24-2/175 Double Helix Anchor	Avon	NZ	1.8m	M20	175mm	60mm	Each	9.0kg	1	AA05007
536539	Avon 1.8/24/210 Screw Anchor	Avon	NZ	1.8m	M24	210mm	60mm	Each	8.9kg	1	AA05004
536547	Avon 1.8/32/250 Screw Anchor	Avon	NZ	1.8m	M32	250mm	60mm	Each	17.0kg	1	AA05006

Part Number	Description	Brand	Origin	Length	Width	Thick	Eye ID	Unit	Weight	Bag Qty	Drawing
<b>M16 Eye Bolts</b>											
537144	Avon 20x200mm Eye Bolt + M16 Nut	Avon	NZ	200mm	50mm	14.7mm	20mm	Each	490g	10	AA02002
537152	Avon 32x200mm Eye Bolt + M16 Nut	Avon	NZ	200mm	62mm	14.7mm	32mm	Each	500g	10	AA02011
537160	Avon 20x250mm Eye Bolt + M16 Nut	Avon	NZ	250mm	50mm	14.7mm	20mm	Each	620g	10	AA02004

Part Number	Description	Brand	Origin	Length	Width	Thick	Holes	Unit	Weight	Bag Qty	Drawing
<b>5mm Crossarm Braces</b>											
536555	Avon 610x30mm Crossarm Brace	Avon	NZ	610mm	30mm	5mm	14mm	Each	720g	20	AA13009
537179	Avon 660x30mm Crossarm Brace	Avon	NZ	660mm	30mm	5mm	14mm	Each	780g	20	AA13010
536563	Avon 700x30mm Crossarm Brace	Avon	NZ	700mm	30mm	5mm	14mm	Each	830g	20	AA13011
537187	Avon 763x30mm Crossarm Brace	Avon	NZ	763mm	30mm	5mm	14mm	Each	900g	20	AA13013
536571	Avon 800x30mm Crossarm Brace	Avon	NZ	800mm	30mm	5mm	14mm	Each	940g	20	AA13015
536598	Avon 900x30mm Crossarm Brace	Avon	NZ	900mm	30mm	5mm	14mm	Each	1.1kg	20	AA13017



Black (for copper)



White (for aluminium)

## CABLE OXIDE REMOVAL BRUSHES

Part Number	Description	Brand	Origin	Colour	Length	Diameter	Unit	Weight	Box Qty
<b>For Cleaning Copper Conductor prior to crimping</b>									
523054	Fulton ORB-1 Oxide Film Removal Brush	Fulton	Australia	Black	130mm	50mm	Each	140g	15
<b>For Cleaning Aluminium Conductor prior to crimping</b>									
523062	Fulton ORB-2 Oxide Film Removal Brush	Fulton	Australia	White	130mm	50mm	Each	140g	15





AAR 0620



AAR 0660



AAR 1050



AAR 1400

**PAYER ALUMINIUM ARMOUR RODS (RH LAY)**

Part Number	Description	Brand	Origin	Conductor	Colour	Diameter Range	Wires	Unit	Box Qty
<b>Aluminium Armour Rods</b>									
560006	AAR 0620 Armour Rods	Payer	Canada	Squirrel/Namu/Boron	Orange	6.2 - 6.59mm	7x3.71mm	Each	40
560014	AAR 0660 Armour Rods	Payer	Canada	Flounder	Brown	6.6 - 6.94mm	7x3.71mm	Each	40
560286	AAR 0695 Armour Rods	Payer	Canada	Gopher/Poko	Yellow	6.95 - 7.34mm	8x3.71mm	Each	40
560294	AAR 0880 Armour Rods	Payer	Canada	Ferret/Kutu	Red	8.8 - 9.29mm	9x4.24mm	Each	25
560022	AAR 1050 Armour Rods	Payer	Canada	Mink/Rango	Black	10.5 - 11.09mm	10x4.24mm	Each	20
560308	AAR 1245 Armour Rods	Payer	Canada	Wasp	Green	12.45 - 13.24mm	11x4.24mm	Each	20
560030	AAR 1400 Armour Rods	Payer	Canada	Dog/Weke/Iodine	Blue	14.0 - 14.89mm	11x4.24mm	Each	15
560316	AAR 1790 Armour Rods	Payer	Canada	Wolf	Red	17.9 - 18.8mm	12x5.18mm	Each	10



Genuine Payer of Canada

## PAYER ALUMINIUM LINE GUARDS &amp; LINE SPLICES (RH LAY)

Part Number	Description	Brand	Origin	Conductor	Colour	Diameter Range	3.07mm Wires	Unit	Box Qty
<b>Aluminium Line Guards</b>									
560626	ALG 0620 Line Guard	Payer	Canada	Squirrel/Namu	Orange	6.2 - 6.59mm	8	Each	50
560634	ALG 0695 Line Guard	Payer	Canada	Gopher/Poko	Yellow	6.95 - 7.34mm	9	Each	50
560642	ALG 0735 Line Guard	Payer	Canada	Chlorine	Blue	7.35 - 7.84mm	9	Each	50
560650	ALG 0880 Line Guard	Payer	Canada	Ferret/Kutu	Red	8.8 - 9.29mm	10	Each	40
560669	ALG 1050 Line Guard	Payer	Canada	Mink/Rango	Black	10.5 - 11.09mm	13	Each	30
560677	ALG 1180 Line Guard	Payer	Canada	Raccoon	White	11.8 - 12.44mm	13	Each	30
560685	ALG 1245 Line Guard	Payer	Canada	Wasp	Green	12.45 - 13.24mm	13	Each	30
560693	ALG 1400 Line Guard	Payer	Canada	Dog/Weke	Blue	14.0 - 14.89	15	Each	25
560707	ALG 1880 Line Guard	Payer	Canada	Jaguar	White	18.8 - 20.14mm	17	Each	15
560715	ALG 2015 Line Guard	Payer	Canada	Cockroach	Red	20.15 - 21.34mm	18	Each	15
<b>Aluminium Line Splices</b>									
560499	ALS 0625 Line Splice	Payer	Canada	Squirrel/Namu	Orange	6.25 - 6.54mm	2x4	Each	50
560502	ALS 0655 Line Splice	Payer	Canada	Flounder	Brown	6.55 - 6.89mm	2x4	Each	50
560510	ALS 0690 Line Splice	Payer	Canada	Gopher/Poko	Yellow	6.9 - 7.14mm	3x3	Each	40
560529	ALS 1015 Line Splice	Payer	Canada	Hake	Black	10.15 - 10.49mm	2x4+1x5	Each	40



ADE 0625



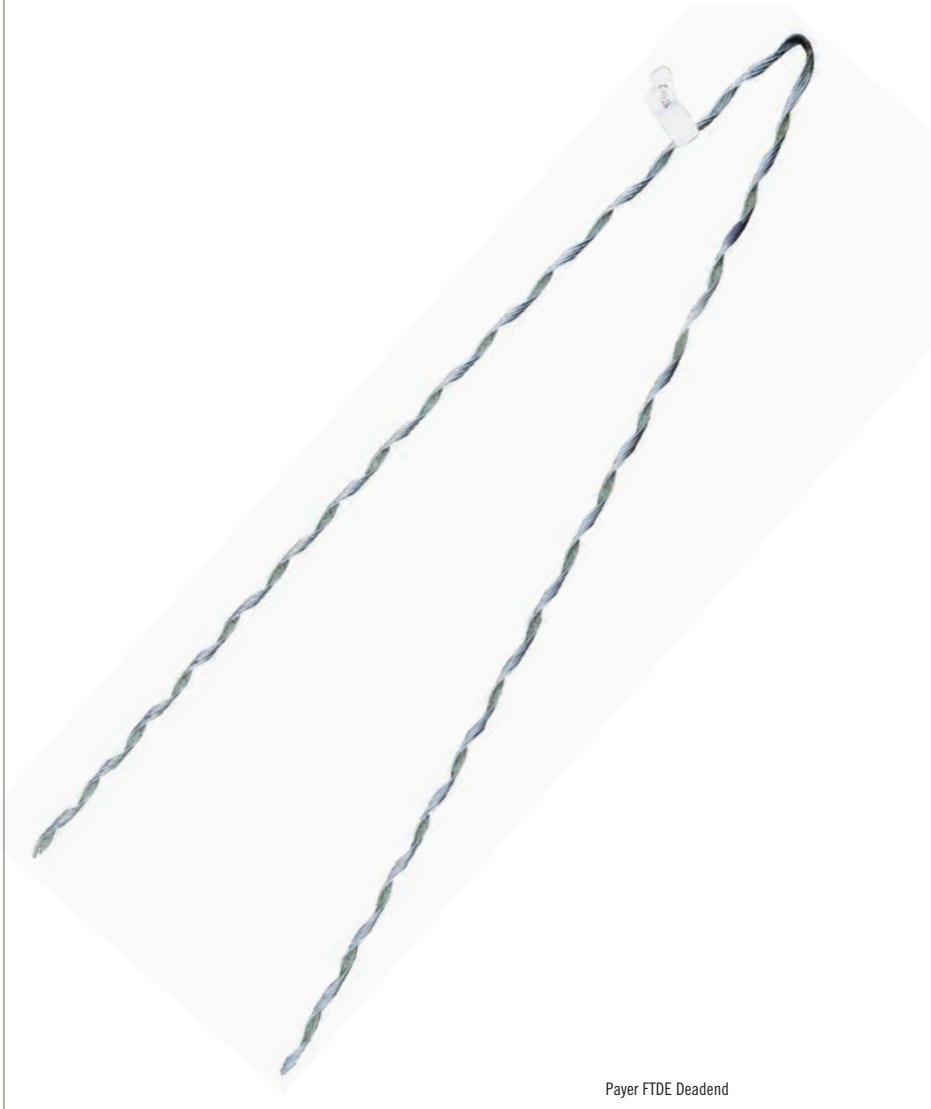
ADE 1080



ADE 1385

**PAYER ALUMINIUM DEADENDS (RH LAY)**

Part Number	Description	Brand	Origin	Conductor	Colour	Diameter Range	Unit	Box Qty
<b>Aluminium Deadends</b>								
560057	Payer ADE 0625 Deadend	Payer	Canada	Squirrel/Namu	Orange	6.25 - 6.54mm	Each	40
560049	Payer ADE 0690 Deadend	Payer	Canada	Gopher/Poko	Yellow	6.9 - 7.14mm	Each	40
560324	Payer ADE 0895 Deadend	Payer	Canada	Ferret/Kutu	Red	8.95 - 9.34mm	Each	50
560332	Payer ADE 0970 Deadend	Payer	Canada	Rabbit	Brown	9.7 - 10.14mm	Each	40
560073	Payer ADE 1080 Deadend	Payer	Canada	Mink/Rango	Black	10.8 - 11.3mm	Each	30
560340	Payer ADE 1130 Deadend	Payer	Canada	Grasshopper	Blue	11.3 - 11.74mm	Each	30
560359	Payer ADE 1225 Deadend	Payer	Canada	Raccoon	White	12.25 - 12.79mm	Each	25
560367	Payer ADE 1280 Deadend	Payer	Canada	Wasp/Beetle	Green	12.8 - 13.5mm	Each	25
560065	Payer ADE 1385 Deadend	Payer	Canada	Dog/Weke/Iodine	Blue	13.85 - 14.44mm	Each	20
560375	Payer ADE 1570 Deadend	Payer	Canada	Cricket	Orange	15.7 - 16.39mm	Each	15
560383	Payer ADE 1640 Deadend	Payer	Canada	Dingo/Weta	Brown	16.4 - 17.04mm	Each	10
560103	Payer ADE 1855 Deadend	Payer	Canada	Jaguar/Mata	White	18.55 - 19.29mm	Each	10
560391	Payer ADE 2100 Deadend	Payer	Canada	Cockroach	Red	21.0 - 21.41mm	Each	10
560405	Payer ADE 2255 Deadend	Payer	Canada	Butterfly	Green	22.55 - 24.33mm	Each	10



Payer FTDE Deadend

**PAYER FULL TENSION GALV STEEL DEADENDS (RH LAY)**

Part Number	Description	Brand	Origin	Conductor	Colour	Diameter	Unit	Box Qty
<b>Single Piece Galv Steel Deadends</b>								
560081	Payer FTDE Deadend	Payer	Canada	Flounder	Grey	6.71mm	Each	50
560618	Payer FTDE Deadend	Payer	Canada	Mink	Red	10.98mm	Each	40





LTDNE 0585



LTDNE 0735



LTDNE 0955

**PAYER GALV STEEL LIMITED TENSION NEOPRENE DEADENDS (RH LAY)**

Part Number	Description	Brand	Origin	Conductor	Colour	Diameter Range	Unit	Box Qty
<b>Neoprene Deadends</b>								
560197	LTNDE 0585 Deadend	Payer	Canada	Flounder	Green	5.85 - 7.34mm	Each	50
560111	LTNDE 0735 Deadend	Payer	Canada	Namu	Red	7.35 - 9.55mm	Each	100
560200	LTNDE 0955 Deadend	Payer	Canada	Ferret	Blue	9.55 - 11.35mm	Each	50
560138	LTNDE 1210 Deadend	Payer	Canada	Rango	Red	12.1 - 14.17mm	Each	25
560146	LTNDE 1485 Deadend	Payer	Canada	Beetle/Wasp/Weke	Black	14.85 - 16.63mm	Each	20
560413	LTNDE 1880 Deadend	Payer	Canada	Weta	Yellow	18.8 - 20.19mm	Each	10
560421	LTNDE 2200 Deadend	Payer	Canada	Butterfly	Blue	22.0 - 23.32mm	Each	10
560429	LTNDE 2500 Deadend	Payer	Canada	Goat/Centipede	Orange	25.0 - 26.67mm	Each	10



SGG 0595



SGG 1185



SGL 0930

### PAYER GALV STEEL GUY GRIPS & GUY LOCKS (RH LAY)

Part No.	Description	Brand	Origin	Galv Steel	Colour	Diameter Range	Unit	Box Qty
<b>Guy Grips</b>								
560219	SGG 0485 Guy Grip	Payer	Canada	7/16	Black	4.85 - 5.04mm	Each	100
560154	SGG 0595 Guy Grip	Payer	Canada	7/14 SWG	Yellow	5.95 - 6.19mm	Each	50
560227	SGG 0765 Guy Grip	Payer	Canada	7/12	White	7.65 - 7.99mm	Each	50
560162	SGG 0895 Guy Grip	Payer	Canada	7/3.00	Red	8.95 - 9.29mm	Each	25
560235	SGG 0930 Guy Grip	Payer	Canada	7/3.15 & 1/19/1.9	Red	9.3 - 9.69mm	Each	40
560170	SGG 0970 Guy Grip	Payer	Canada	7/10 SWG	Green	9.7 - 10.04mm	Each	40
560251	SGG 1185 Guy Grip	Payer	Canada	7/4.00	Brown	11.85 - 12.19mm	Each	25
560456	SGG 1305 Guy Grip	Payer	Canada	19/12 SWG	White	13.05 - 13.49mm	Each	15
<b>Guy Locks</b>								
560464	SGL 0595 Guy Lock	Payer	Canada	7/14 SWG	Yellow	5.95 - 6.19mm	Each	150
560278	SGL 0765 Guy Lock	Payer	Canada	7/12 & 7.5mm	White	7.65 - 7.99mm	Each	50
560472	SGL 0895 Guy Lock	Payer	Canada	7/3.00	Red	8.95 - 9.29mm	Each	35
560189	SGL 0930 Guy Lock	Payer	Canada	7/3.15	Red	9.3 - 9.69mm	Each	30
560480	SGL 1185 Guy Lock	Payer	Canada	7/4.00	Brown	11.85 - 12.19mm	Each	20



GY3 Top View



GY3 Guy Strain

GY3 Side View



107 Fence Strainer



GY2 Guy Strain



GY4 Guy Strain

**PORCELAIN GUY STRAINS & FENCE STRAINER**

Part Number	Description	Brand	Origin	Length	Wet Flashover	Failing Load	Glaze	Unit	Weight	Box/Pallet	Drawing
<b>Guy Strains</b>											
108197	NZI GY2 15kV Guy Strain	NZI	NZ	146mm	15kV	71kN	Grey	Each	1.2kg	18/1152	S2289
108162	NZI GY3 20kV Guy Strain	NZI	NZ	216mm	30kV	222kN	Grey	Each	3.8kg	4/192	S2290
108170	NZI GY4 30kV Guy Strain	NZI	NZ	280mm	30kV	222kN	Grey	Each	5.7kg	4/168	S2291
<b>Fence Strainer</b>											
108014	NZI 107 Fence Strain	NZI	NZ	57mm	4kV	4.5kN	Clear	Each	135g	140	M1515

# AX CLEVIS Thimbles & 15kV Strain Bundles

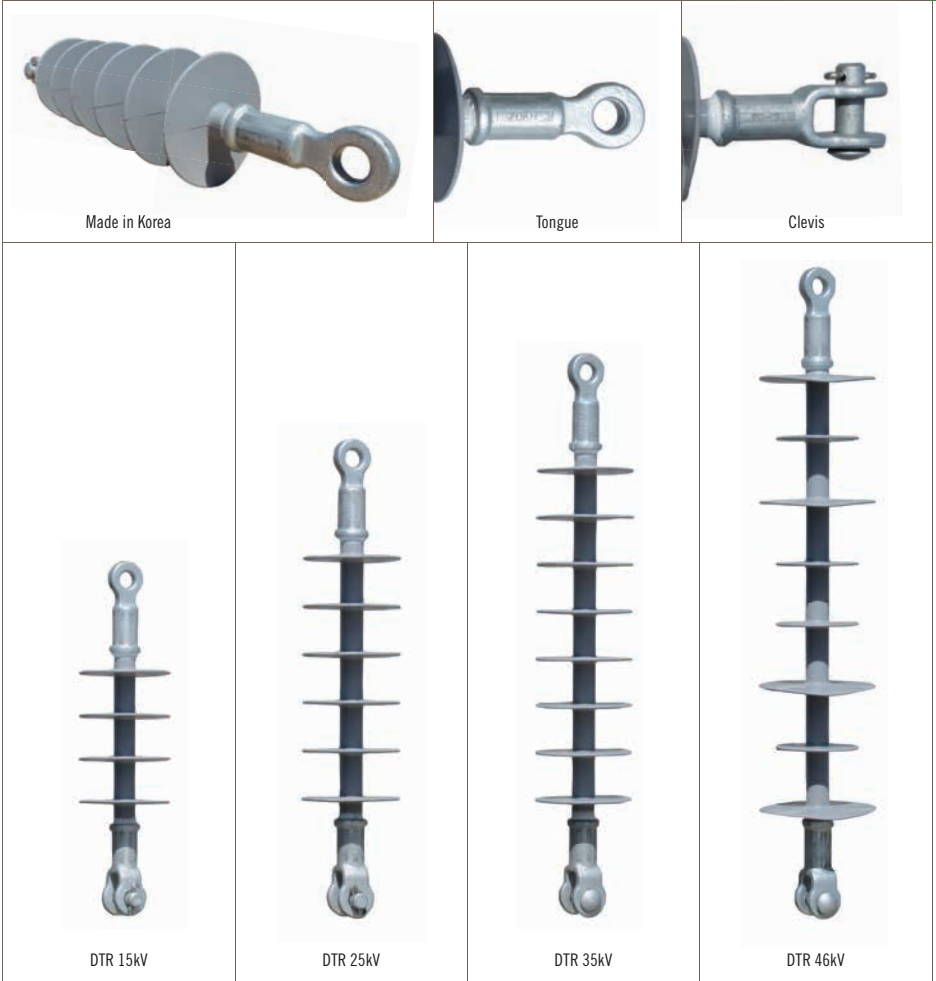


## CLEVIS THIMBLES & POLYMER STRAIN BUNDLES

Part Number	Description	Brand	Origin	Strength	Length	Int Width	Loop	Unit	Weight	Box Qty	Drawing
<b>Clevis Thimbles</b>											
536342	AX Aluminium Clevis Thimble	AX	China	70kN	132mm	30mm	57mm	Each	470g	30	D374-2140
536393	AX Galv Steel Clevis Thimble	AX	China	70kN	146mm	25mm	57mm	Each	650g	30	D374-2142
<b>HDG Thimble</b>											
536407	AX 16mm Galv Thimble	AX	NZ		80mm	16mm	57mm	Each	100g	10	
<b>Preassembled Polymer Strain Bundles</b>											
553336	DTR 15kV Polymer Strain + AX Aluminium Clevis + Avon 32/200M16 Eye Bolt								2.1kg	10	
553344	DTR 15kV Polymer Strain + AX Galv Steel Clevis + Avon 32/200M16 Eye Bolt								2.3kg	10	







**POLYMER STRAIN INSULATORS**

Part Number	Description	Brand	Origin	Rated kN	End Fittings	Creepage	Sheds	Length	Colour	Weight	Box/ Drawing
<b>Polymer Strains (IEC 61109)</b>											
553018	DTR 15kV Polymer Strain	DTR	Korea	15kV	70 Tongue & Clevis	459	4	347	Grey	0.8kg	10/640 ISA7-0459-AGH
553026	DTR 25kV Polymer Strain	DTR	Korea	25kV	70 Tongue & Clevis	693	6	442	Grey	1.3kg	10/600 ISB7-0693-AGH
553034	DTR 35kV Polymer Strain	DTR	Korea	35kV	70 Tongue & Clevis	927	8	536	Grey	1.4kg	10/600 ISC7-0927-AGH
553603	DTR 46kV Polymer Strain	DTR	Korea	46kV	70 Tongue & Clevis	1070	8	644	Grey	1.8kg	8/224 ISC9-1070-CAB



### 69KV POLYMER STRAIN INSULATORS

Part Number	Description	Brand	Origin	Rated kN	End Fittings	Creepage (mm)	Sheds	Length (mm)	Colour	Weight	Box/ Pallet	Drawing
<b>69kV Polymer Strains (IEC 61109)</b>												
553700	DTR 69kV Polymer Strain	DTR	Korea	69kV	70 Tongue & Clevis	2205	13	864	Grey	2.9kg	1/144	ISD7-2205-BAB
553379	DTR 69kV L011745 Strain	DTR	Korea	69kV	120 Ball & Socket	2070	19	800	Grey	4.4kg	1	SCGL019-A6800
553395	DTR 69kV L011746Y Strain	DTR	Korea	69kV	120 Y Clevis & Eye	2070	19	821	Grey	4.9kg	1	SCGL019-A2800
553387	DTR 69kV L011746 Strain	DTR	Korea	69kV	120 Ball & Socket	2449	17	859	Grey	5.4kg	1	SCVL017-A6800
553409	DTR 69kV L066096 Strain	DTR	Korea	69kV	160 Eye & Eye	1658	15	855	Grey	4.6kg	1	SEHL015-B1100



Ball & Socket Suspension Insulator



Y Clevis Suspension Insulator



Eye Eye Strain Insulator

## POLYMERIC SUSPENSION INSULATORS FOR TRANSMISSION

Part Number	Description	Brand	Origin	Rated	Creep (mm)	Strength (kN)	Length (mm)	Sheds	Reference	Colour	Weight	Drawing
<b>110kV Suspension Strains</b>												
553417	Ball & Socket	DTR	Korea	115kV	3754	120	1232	35	L011760	Grey	7.1kg	SCGL035-A6801
553425	Y Clevis	DTR	Korea	115kV	3754	120	1253	35	L011760Y	Grey	7.6kg	SCGL035-A2801
553433	Ball & Socket	DTR	Korea	115kV	3893	120	1214	27	L011761	Grey	8.8kg	SCGL027-A6801
553441	Ball & Socket	DTR	Korea	115kV	3754	210	1241	35	L011770	Grey	8.0kg	SFGL035-B6801
553468	Y Clevis	DTR	Korea	115kV	3754	210	1262	35	L011770Y	Grey	8.5kg	SFVL035-B2801
553476	Ball & Socket	DTR	Korea	115kV	3893	210	1226	27	L011771	Grey	9.0kg	SFVL027-B6801
<b>220kV Suspension Strains</b>												
553484	Ball & Socket	DTR	Korea	230kV	7121	120	2096	67	L011762	Grey	11.9kg	SCGL067-A6811
553492	Ball & Socket	DTR	Korea	230kV	7606	120	2137	53	L011763	Grey	13.0kg	SCVL053-A6811
553506	Ball & Socket	DTR	Korea	230kV	7121	210	2105	67	L011772	Grey	12.4kg	SFGL067-B6811
553514	Ball & Socket	DTR	Korea	230kV	7607	210	2149	53	L011773	Grey	14.5kg	SCGL053-B6811
<b>400kV Suspension Strains</b>												
553522	Ball & Socket	DTR	Korea	500kV	12804	120	3554	121	L011764	Grey	18.5kg	SCGL121-A6813
553530	Ball & Socket	DTR	Korea	500kV	13301	120	3557	93	L011765	Grey	21.7kg	SCVL093-A6813
553549	Ball & Socket	DTR	Korea	500kV	12804	210	3563	121	L011774	Grey	19.5kg	SFGL121-B6813
553557	Ball & Socket	DTR	Korea	500kV	13301	210	3569	93	L011775	Grey	22.7kg	SFVL093-B6813



Now in GIG wooden boxes



Top View



GIG Standard Profile – Tongue & Clevis



Clevis

**11KV TOUGHENED GLASS DISCS FOR DISTRIBUTION (IEC 383-1)**

Part Number	Description	Brand	Origin	Strength	Coupling	Diameter	Creepage	Colour	Unit	Weight	Box/ Pallet	Drawing
<b>Standard Profile Discs</b>												
119350	GIG 11kV T&C Glass Disc	GIG	Ukraine	70kN	Tongue & Clevis	255mm	320mm	Clear	Each	4.1kg	3/96	D221-0519
119407	GIG 11kV B&S Glass Disc	GIG	Ukraine	70kN	Ball & Socket	255mm	320mm	Clear	Each	3.8kg	3/96	D221-0501
<b>Fog Profile Disc</b>												
119415	GIG 11kV B&S Fog Disc	GIG	Ukraine	70kN	Ball & Socket	280mm	450mm	Clear	Each	5.3kg	3/96	LXHY5-70





GIG U120B



U120B Top



U120B Base



GIG U160BS



U160BS Top



U160BS Base



GIG U300B



U300B Top



U300B Base

**HV TOUGHENED GLASS DISCS FOR TRANSMISSION (IEC 60305)**

Part Number	Description	Brand	Origin	Failing	Puncture	Coupling	Diameter	Creepage	Spacing	Unit Weight	Box/ Drawing	Pallet
<b>GIG 120kN</b>												
118001	U120B Glass Disc	GIG	Ukraine	120kN	130kV	Ball & Socket	255mm	320mm	146mm	Each 3.9kg	5/120	N-620R
<b>GIG 160kN</b>												
118028	U160BS Glass Disc	GIG	Ukraine	160kN	130kV	Ball & Socket	280mm	385mm	146mm	Each 6.1kg	6/126	N-101B
<b>GIG 300kN</b>												
118036	U300B Glass Disc	GIG	Russia	300kN	130kV	Ball & Socket	320mm	390mm	195mm	Each 10.0kg	4/36	N-696



DTR 12kV Class 1 (CA12/10.HD)



Made in Korea



32mm Top



Bracket



Base Fitting

**12KV POLYMER SURGE ARRESTERS (IEC 60099-4)**

Part Number	Description	Brand	Origin	Rated	Current	MCOV	Top Fitting	Bracket	Colour	Box/ Pallet	Drawing
<b>12kV Surge Arresters</b>											
553042	DTR 12kV 10kA Class 1	DTR	Korea	12kV	10kA	10.2kV	32mm	Nema	Grey	3/168	CA12/10.HD
553077	DTR 12kV 10kA Class 1	DTR	Korea	12kV	10kA	10.2kV	100mm	Nema	Grey	3/168	CA12/10.HD100
553204	DTR 12kV 10kA Class 2	DTR	Korea	12kV	10kA	9.6kV	32mm	Nema	Grey	3/168	CA12/10.2D





DTR 15kV (CA15/10.2D)

**15KV POLYMER SURGE ARRESTER (IEC 60099-4)**

Part Number	Description	Brand	Origin	Rated Current	MCOV	Top Fitting	Bracket Colour	Box/ Pallet	Drawing
	<b>15kV Surge Arrester</b>								
553646	DTR 15kV 10kA Class 2	DTR	Korea	15kV 10kA	12.0kV	32mm	Nema Grey	3/168	CA15/10.2D

DTR 18kV Alt Sheds (CA18/10.1D)



DTR 18kV (CA18/10.2D)



**18KV POLYMER SURGE ARRESTERS (IEC 60099-4)**

Part Number	Description	Brand	Origin	Rated Current	MCOV	Top Fitting	Bracket Colour	Box/ Drawing Pallet
<b>18kV Surge Arresters</b>								
553050	DTR 18kV 10kA Class 1 (Alt Sheds)	DTR	Korea	18kV 10kA	15.3kV	32mm	Nema Grey	3/168 CA18/10.1D
553565	DTR 18kV 10kA Class 2	DTR	Korea	18kV 10kA	15.3kV	32mm	Nema Grey	3/168 CA18/10.2D







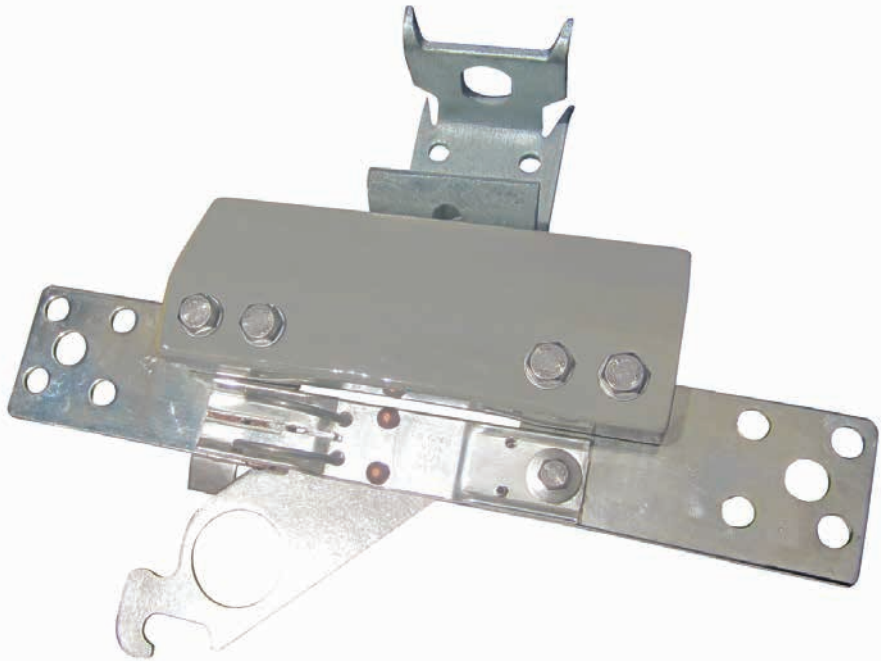
LVI Bottom View



LVI Top View



LVI End View



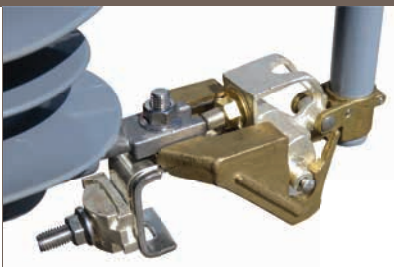
NGK Stanger LVI (3/box)

**SOLID LINK LVI & FUSED LINK LVFI ISOLATORS**

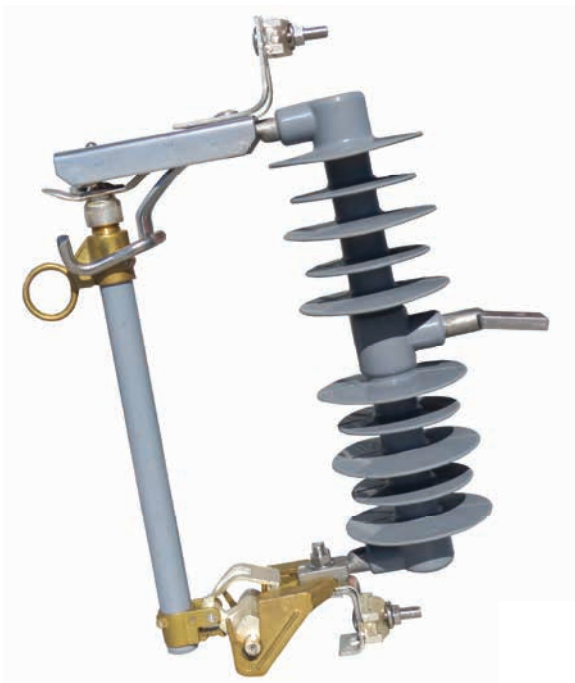
Part Number	Description	Brand	Origin	Rated Current	Contacts	Standard	Weight	Box/ Drawing	Pallet
<b>Single Solid Link LVI</b>									
258377	NGK-S Low Voltage Isolator	NGK-S	Australia	480V	630A	Silver M12 AS175-1975	2.5kg	3	NZ4284
<b>Single Fused Link LVFI</b>									
258385	NGK-S Low Voltage Fused Isolator	NGK-S	Australia	480V	630A	Silver M12 AS175-1975	3.3kg	3	NZ4286



Stainless Steel



Hinge



DTR Polymer 150BIL EDO with Stainless Steel Fittings

## POLYMER EDO DROPOUTS (IEC ??)

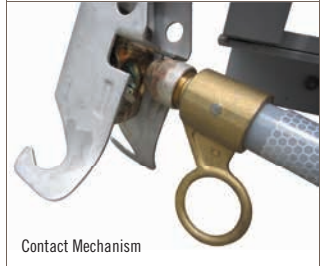
Part Number	Description	Brand	Origin	Rated BIL	Current	Creepage	Length	Colour	Weight	Box/ Pallet	Drawing
<b>EDO – Stainless Steel Fittings</b>											
553743	DTR 27kV 150BIL Stainless EDO	DTR	Korea	27kV 150kV	100A	580mm	382mm	Grey	5.4kg	1/60	SCSNL15-AP1-100C
<b>EDO – Mixed Metal Fittings</b>											
553190	DTR 27kV 150BIL EDO Cutout	DTR	Korea	27kV 150kV	100A	580mm	382mm	Grey	5.4kg	1/60	CS0270-0580-100E



12-24kV 150BIL EDO (100A)



Hinge



Contact Mechanism

**100A PORCELAIN EDO C-TYPE DROPOUT SWITCHES**

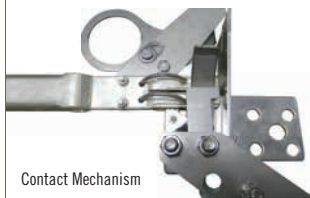
Part Number	Description	Brand Origin	BIL	Current	Creepage	Breaking	Colour	Standard	Weight	Box/ Drawing	Pallet
<b>150BIL EDO with Fuse Tube</b>											
539023	NGK-S 12/24kV Porcelain EDO	NGK-S Australia	150kV	100A	475mm	8kA@12kV	Grey	AS/NZS 1033.1	12.8kg	1/49	72298/15
<b>170BIL EDO with Fuse Tube</b>											
539031	NGK-S 24/36kV Porcelain EDO	NGK-S Australia	170kV	100A	600mm	6kA@24kV	Grey	AS/NZS 1033.1	13.3kg	1/28	72299/27NORQEB
<b>EDO Optional Accessories</b>											
	NGK-S EDO Earthing Stirrup	NGK-S Australia									70450/6
	NGK-S EDO Fire Prevention Device	NGK-S Australia									72835
	NGK-S EDO Birdproof Cover	NGK-S Australia									72905



Made in Australia



Hinge



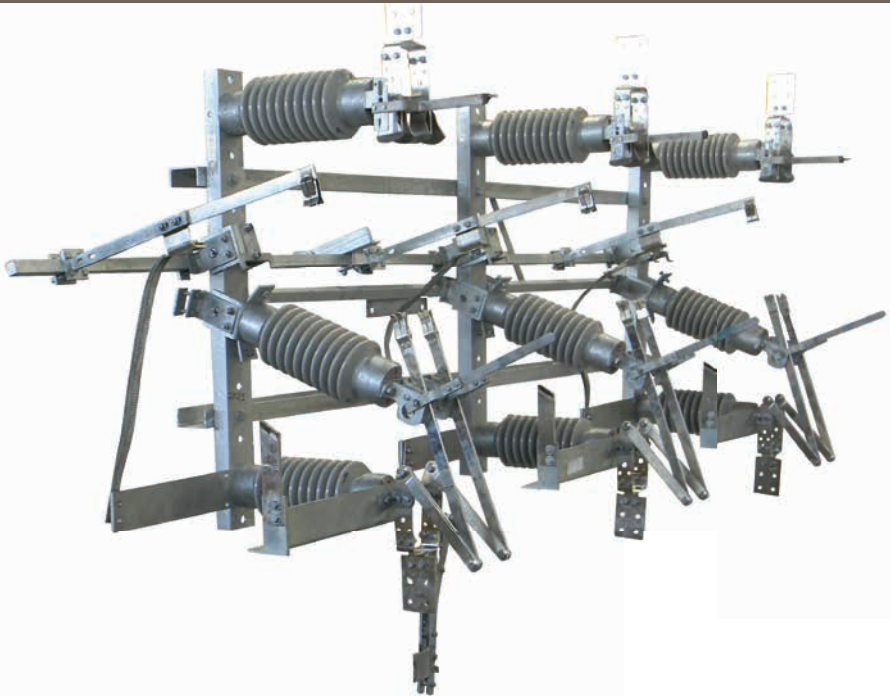
Contact Mechanism



12-14kV 150BIL HVI (630A)

## 630A PORCELAIN HVI C-TYPE SOLID LINKS

Part Number	Description	Brand Origin	BIL	Current	Creepage S/T	Colour	Standard	Weight	Box/ Pallet	Drawing
<b>125BIL HVI</b>										
253464	NGK-S 12kV Single Pole HVI	NGK-S Australia	125kV	630A	300mm	20kA at 1sec	Grey	AS/NZS 1025	9.0kg	1/28 70416
253014	NGK-S 12/24kV Single Pole HVI	NGK-S Australia	125kV	630A	300mm	20kA at 1sec	Grey	AS/NZS 1025	9.0kg	1/28 70416/NSW
<b>150BIL HVI</b>										
539058	NGK-S 12/24kV Single Pole HVI	NGK-S Australia	150kV	630A	475mm	20kA at 1sec	Grey	AS/NZS 1306	10.5kg	1/28 70414/NSW
<b>170BIL HVI</b>										
539228	NGK-S 24/36kV Single Pole HVI	NGK-S Australia	170kV	630A	600mm	20kA at 1sec	Grey	AS/NZS 1306	12.0kg	1/28 70423/1
539007	NGK-S 24/36kV Single Pole HVI	NGK-S Australia	170kV	630A	660mm	20kA at 1sec	Grey	AS/NZS 1306	12.0kg	1/28 70423/1EE
539236	NGK-S 24/36kV Single Pole HVI + Earth Stirrup	NGK-S Australia	170kV	630A	600mm	20kA at 1sec	Grey	AS/NZS 1306	13.5kg	1/28 70423/2CE
<b>Universal Mounting Brackets for NGK-S HVI</b>										
253006	NGK-S HVI Mounting Bracket (Z)	NGK-S Australia								69196
253472	NGK-S HVI Mounting Bracket (Y)	NGK-S Australia								69194



NGK Stanger PR3

## MANUAL PR3 AIR BREAK SWITCHES

Part Number	Description	Brand	Origin	Rating	Current	BIL	Rate S/T Current	Standard	Drawing
<b>Manual Flicker Style Air Break Switches</b>									
539139	NGK-S 12kV PR3 Vert/Hor ABS	NGK-S	Australia	12kV	630A	150kV	20kA at 1sec	AS/NZS ISO 9001:2008	69118
539147	NGK-S 24kV PR3 Vert/Hor ABS	NGK-S	Australia	24kV	630A	150kV	16kA at 1sec	AS/NZS ISO 9001:2008	69119
539155	NGK-S 36kV PR3 Vert/Hor ABS	NGK-S	Australia	36kV	630A	200kV	20kA at 1sec	AS/NZS ISO 9001:2008	69120
<b>Optional Accessories for NGK-S ABS</b>									
	NGK-S ABS Earth Switch (24&36kV only)	NGK-S	Australia						
	NGK-S ABS Dropout Fuse Mount	NGK-S	Australia						
	NGK-S ABS Crossarm	NGK-S	Australia						
	NGK-S ABS Operating Handle	NGK-S	Australia						
	NGK-S ABS Mounting Bracket Kit	NGK-S	Australia						
	NGK-S ABS Double Break Interrupter	NGK-S	Australia						
	NGK-S ABS ARCBREK 5 Interrupter	NGK-S	Australia						



Compact 24kV SF6



Compact 12kV SF6 (NGK Stanger 91776)

### MANUAL SF6 LOAD BREAK GAS SWITCHES

Part Number	Description	Brand	Origin	Rating	Current	Making Current	Standard	Weight	Drawing
<b>Manual SF6 Gas Switches</b>									
539082	NGK-S 12kV SF6 Compact Gas Switch	NGK-S	Australia	12kV	630A	41.6kA	AS/NZS ISO 9001:2008	75kg	91776
539090	NGK-S 24kV SF6 Compact Gas Switch	NGK-S	Australia	24kV	630A	41.6kA	AS/NZS ISO 9001:2008	95kg	90030
539104	NGK-S 36kV SF6 Gas Switch	NGK-S	Australia	36kV	630A	33kA	AS/NZS ISO 9001:2008	180kg	90036
<b>Optional Accessories for all SF6</b>									
	NGK-S SF6 Safety Locking Kit	NGK-S	Australia						91777
<b>Optional Accessories for 12&amp;24kV SF6</b>									
	NGK-S SF6 12/24 Crossarm	NGK-S	Australia						91743
	NGK-S SF6 12/24 Surge Diverter Mounting Kit	NGK-S	Australia						91806
	NGK-S SF6 12/24 Mid Pole Actuator Kit	NGK-S	Australia						95110
<b>Optional Accessories for 36kV SF6</b>									
	NGK-S SF6 36 Crossarm	NGK-S	Australia						90481
	NGK-S SF6 36 Pole Top Mounting Kit	NGK-S	Australia						90498
	NGK-S SF6 36 Surge Diverter Mounting Kit	NGK-S	Australia						95001



12mm 1800mm 500micron Copper-Clad Earth Rod (to AS1572)



BC12 Brass Coupler



TPS12 Star Point



REB1210-70



REX16-120



REC35-120



DHT12 Driving Head



10/Tube

**FULTON 12mm EARTH RODS & ACCESSORIES**

Part Number	Description	Brand	Origin	Diameter	Length	Detail	Unit	Weight	Pack Qty	Drawing Qty
<b>12mm Copper-Clad Earth Rods (1.8 &amp; 2.0m)</b>										
523097	Fulton CDR-12-1800 Earth Rod	Fulton	Australia	12mm	1800mm	500micron CU to AS1572	Each	2.0kg	10	657-A4
523801	Fulton CDR-12-2000 Earth Rod	Fulton	Australia	12mm	2000mm	500micron CU to AS1572	Each	2.3kg	10	1310-A4
<b>Accessories for 12mm Earth Rods</b>										
523100	Fulton BC12 Brass Coupler	Fulton	Australia	Fit 12mm	70mm		Each	70g	20	615-A4
523119	Fulton TPS12 Star Point	Fulton	Australia	Fit 12mm	72mm		Each	100g	20	658-A4
523755	Fulton 12D-1 Brass Clip	Fulton	Australia	Fit 12mm			Each	20g	20	
523178	Fulton ERDP-1 Driving Pin	Fulton	Australia		32mm		Each	10g	25	1161-A4
523461	Fulton DHT12 Driving Head Tool	Fulton	Australia	Fit 12mm	102mm		Each	300g	5	659-A4
523488	Fulton K900DM12 Kango Driving Moil	Fulton	Australia	Fit12mm	227mm		Each	570g	1	1311-A4
<b>Clamps for 12mm Earth Rods</b>										
523070	Fulton REB1210-70 Clamp	Fulton	Australia		40mm	Cable Range 10-70mm <sup>2</sup>	Each	100g	20	1240-A4
523844	Fulton REX16-120 Clamp	Fulton	Australia		64mm	Cable Range 16-120mm <sup>2</sup>	Each	260g	10	945-A4
523089	Fulton REC35-120 Clamp	Fulton	Australia		67mm	Cable Range 35-120mm <sup>2</sup>	Each	150g	10	611-A4

# FULTON 15 & 19mm Earth Rods & Accessories



FULTON 15mm/19mm EARTH RODS & ACCESSORIES										
Part Number	Description	Brand	Origin	Diameter	Length	Detail	Unit	Weight	Pack Qty	Drawing
<b>15mm Copper-Clad Earth Rod</b>										
524131	Fulton CDR-15-1800 Earth Rod	Fulton	Australia	15mm	1800mm	500micron CU to AS1572	Each	2.3kg	10	
<b>Accessories for 15mm Earth Rods</b>										
523518	Fulton BC15 Brass Coupler	Fulton	Australia	Fit 15mm	70mm	–	Each	80g	20	614-A4
523577	Fulton TPS15 Star Point	Fulton	Australia	Fit 15mm	72mm	–	Each	95g	10	617-A4
524158	Fulton DHT15 Driving Head Tool	Fulton	Australia	Fit 15mm	102mm	–	Each	300g	1	1239-A4
524360	Fulton K900DM15 Driving Moil	Fulton	Australia	Fit 15mm	222mm	–	Each	570g	1	1309-A4
<b>Clamps for 15mm Earth Rods</b>										
523844	Fulton REX16-120 Clamp	Fulton	Australia		40mm	Cable Range 16-120mm <sup>2</sup>	Each	260g	10	945-A4
524352	Fulton RET25-120/3 Clamp for 3 Cables	Fulton	Australia		74mm	Cable Range 25-120mm <sup>2</sup>	Each	700g	10	1290-A4
523089	Fulton REC35-120 Clamp	Fulton	Australia		67mm	Cable Range 35-120mm <sup>2</sup>	Each	150g	10	611-A4
<b>19mm Copper-Clad Earth Rod</b>										
524123	Fulton CDR-19-1800 Earth Rod	Fulton	Australia	19mm	1800mm	500micron CU to AS1572	Each	4.5kg	5	1236-A4
<b>Accessories for 19mm Earth Rods</b>										
523135	Fulton BC19 Brass Coupler	Fulton	Australia	Fit 19mm	95mm	–	Each	140g	20	1301-A4
523151	Fulton TP19 Earth Rod Point	Fulton	Australia	Fit 19mm	60mm	–	Each	95g	10	1304-A4
523143	Fulton DHT19 Driving Head Tool	Fulton	Australia	Fit 19mm	102mm	–	Each	300g	1	1305-A4
524379	Fulton K900DM19 Driving Moil	Fulton	Australia	Fit 19mm	222mm	–	Each	570g	1	1306-A4
<b>Clamps for 19mm Earth Rods</b>										
523615	Fulton EC2 Earth Clamp	Fulton	Australia		110mm	Cable Range 16-25mm <sup>2</sup>	Each	485g	10	1308-A4
523844	Fulton REX16-120 Clamp	Fulton	Australia		40mm	Cable Range 16-120mm <sup>2</sup>	Each	260g	10	945-A4
524352	Fulton RET25-120/3 Clamp for 3 Cables	Fulton	Australia		74mm	Cable Range 25-120mm <sup>2</sup>	Each	700g	10	1290-A4





**AVON HDG & STAINLESS STEEL EARTH RODS**

Part Number	Description	Brand	Origin	Length	Diameter	Construction	Unit	Weight	Pack Qty	Drawing
<b>16mm HDG Steel Earth Rods</b>										
537071	Avon 16mm Pointed Earth Rod (no tab)	Avon	NZ	2.0m	16mm	HDG Steel	Each	3.3kg	10	AA24005
537098	Avon 16mm Pointed Earth Rod (with HD12A Tab)	Avon	NZ	2.0m	16mm	HDG Steel	Each	3.3kg	10	AA24009
<b>Coupler for Avon HDG Earth Rods</b>										
537101	Avon 16mm HDG Earth Rod Coupler	Avon	NZ	110mm	16mm	HDG Steel	Each	200g	10	AA24024
<b>12mm Stainless Steel Earth Rod</b>										
537128	Avon 12mm Tapered Earth Rod (no tab)	Avon	NZ	1.5m	12mm	316 Stainless	Each	1.4kg	10	AA24021
<b>Coupler for Avon Stainless Earth Rod</b>										
537136	Avon 12mm Stainless Earth Rod Coupler	Avon	NZ	85mm	12mm	316 Stainless	Each	50g	10	AA24015



Good Earth



Fulton Earthing Rod Pit

### FULTON EARTH ROD PIT & EARTHING COMPOUND

Part Number	Description	Brand	Origin	Footprint	Depth	Detail	Unit	Weight	Pack Qty	Drawing
<b>Earth Rod Inspection Pit</b>										
523763	Fulton PT205 Pit + Lid	Fulton	Australia	256x256	212mm	Black Poly + Grey HD Lid	Each	1.8kg	1	927-A4
<b>Earthing Compound</b>										
523704	Fulton 15kg Good Earth	Fulton	Australia	Covers 0.03m <sup>3</sup>	—	Bentonite/ Gypsum mix	Bag	15kg	1	



SL-4/12



TODL-7/19



SCI-6/19 One Bolt



CTC-1



CTC-2



SC2-6/19 Two Bolt

**TAPS, LUGS, SERVICE & CTC BOLTED CONNECTORS**

Part Number	Description	Brand	Origin	Construction	Conductor	Conductor	Unit Weight	Box Qty
<b>Aluminium Service Taps</b>								
524344	Fulton SL-4/12 Service Tap	Fulton	Australia	Aluminium	7/3.00-7/4.75	9.0-14.3mm	Each 100g	10
524166	Fulton SL-7/19 Service Tap	Fulton	Australia	Aluminium	7/4.5-19/3.75	13.5-18.8mm	Each 200g	10
<b>Aluminium Lugs</b>								
524174	Fulton TODL-7/19 Lug	Fulton	Australia	Aluminium	7/2.5-19/3.75	7.0-19.0mm	Each 375g	10
524182	Fulton TODL-7/19ET 'Bling' Lug	Fulton	Australia	Bright ETP Ali	7/2.5-19/3.75	7.0-19.0mm	Each 375g	10
<b>SC Aluminium Service Connectors</b>								
524190	Fulton SC1-6/19 One-Bolt	Fulton	Australia	Ali + Copper Loop	7/2.25-19/3.75	6.75-18.75mm	Each 200g	10
524204	Fulton SC2-6/19 Two-Bolt	Fulton	Australia	Ali + Copper Loop	7/2.25-19/3.75	6.75-18.75mm	Each 400g	10
<b>CTC Consumer Tee Connectors</b>								
524212	Fulton CTC-1 Single Leg	Fulton	Australia	Aluminium	7/2.25-19/3.75	6.75-18.75mm	Each 175g	10
524220	Fulton CTC-1 Double Leg	Fulton	Australia	Aluminium	7/2.25-19/3.75	6.75-18.75mm	Each 260g	10



TOD-7/19



TOD-4/12 Double



TOD-7/19 Triple



CV4P



CV6P



CV9P

## TEE-OFF &amp; RISING MAIN CONNECTORS

Part Number	Description	Brand	Origin	Construction	Stainless	Conductor	Length	Unit	Weight	Box Qty
<b>Tee-Off Connectors</b>										
524018	Fulton TOD-4/12 Single Bolted Tee-Off	Fulton	Australia	Aluminium	304	4-12mm <sup>2</sup>	51	Each	200g	50
523453	Fulton TOD-7/19 Single Bolted Tee-Off	Fulton	Australia	Aluminium	304	7-19mm <sup>2</sup>	70	Each	237g	50
523003	Fulton TOD-4/12 Double Bolted Tee-Off	Fulton	Australia	Aluminium	304	4-12mm <sup>2</sup>	70	Each	400g	50
523011	Fulton TOD-7/19 Double Bolted Tee-Off	Fulton	Australia	Aluminium	304	7-19mm <sup>2</sup>	95	Each	475g	30
523720	Fulton TOD-7/19 Triple Bolted Tee-Off	Fulton	Australia	Aluminium	304	7-19mm <sup>2</sup>	143	Each	800g	10
<b>3-Piece Rising Main Connectors</b>										
524026	Fulton CV3P Rising Main	Fulton	Australia	Gunmetal ETP	316	50-95mm <sup>2</sup>	58	Each		15
524034	Fulton CV4P Rising Main	Fulton	Australia	Gunmetal ETP	316	120-240mm <sup>2</sup>	58	Each		15
524042	Fulton CV5P Rising Main	Fulton	Australia	Gunmetal ETP	316	120-300mm <sup>2</sup>	58	Each		15
524050	Fulton CV6P Rising Main	Fulton	Australia	Gunmetal ETP	316	120-240mm <sup>2</sup>	70	Each	950g	15
523747	Fulton CV8P Rising Main	Fulton	Australia	Gunmetal ETP	316	300-800mm <sup>2</sup>	77	Each		15
524069	Fulton CV9P Rising Main	Fulton	Australia	Gunmetal ETP	316	240-500mm <sup>2</sup>	86	Each	1.4kg	15



B22T



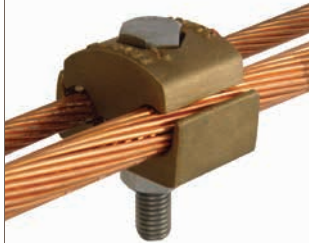
B24T



B28T



CT03/11



SCT025



DCT025

**SPLIT BOLT CONNECTORS & PARALLEL GROOVE CLAMPS**

Part Number	Description	Brand	Origin	Construction	Conductor	Conductor	Conductor	Unit	Weight	Box Qty
<b>Split Bolt Connectors</b>										
524239	Fulton B22T Split Bolt Clamp	Fulton	Australia	ETP Brass	16mm <sup>2</sup>	5.1mm	7/.064	Each		50
524247	Fulton B24T Split Bolt Clamp	Fulton	Australia	ETP Brass	35mm <sup>2</sup>	8.3mm	7/.104	Each		25
524255	Fulton B25T Split Bolt Clamp	Fulton	Australia	ETP Brass	70mm <sup>2</sup>	10.7mm	19/.083	Each		25
524263	Fulton B26T Split Bolt Clamp	Fulton	Australia	ETP Brass	95mm <sup>2</sup>	12.6mm	19/.101	Each		10
524271	Fulton B28T Split Bolt Clamp	Fulton	Australia	ETP Brass	185mm <sup>2</sup>	17.64mm	37/.130	Each		4

Part Number	Description	Brand	Origin	Joining	Length	Construction	Unit	Weight	Box Qty
<b>Parallel Groove Clamps</b>									
524298	Fulton CT03/11 M8 Single Bolt PG Clamp	Fulton	Australia	10-70mm <sup>2</sup>	25mm	CU + 304 Fixings	Each	120g	10
524301	Fulton DCT03/11 M8 Double Bolt PG Clamp	Fulton	Australia	10-70mm <sup>2</sup>	51mm	CU + 304 Fixings	Each	240g	10
524328	Fulton SCT025 M12 Single Bolt PG Clamp	Fulton	Australia	35-150mm <sup>2</sup>	34mm	CU + 304 Fixings	Each	400g	5
524336	Fulton DCT025 M12 Double Bolt PG Clamp	Fulton	Australia	35-150mm <sup>2</sup>	71mm	CU + 304 Fixings	Each	790g	5

## FULTON SHEAR LOCK Clamp



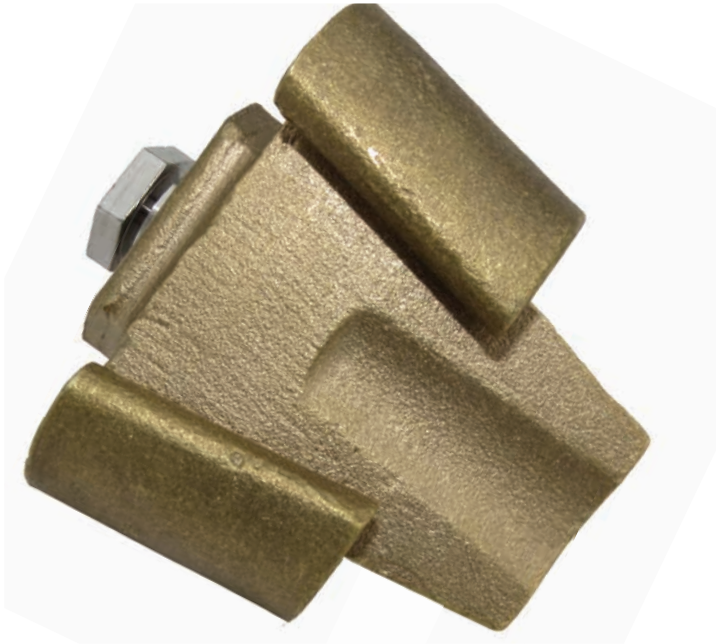
Top View



Back View



Bottom View



One Size Fits All ECW-1 (25-70mm<sup>2</sup>)

### FULTON SHEAR LOCK WEDGE CLAMP

Part Number	Description	Brand	Origin	Conductor Range	Length	Construction	Bolts	Unit Weight	Pack Qty	Drawing
<b>One-Size-Fits-All Wedge Clamp</b>										
524107	Fulton ECW-1 Shear Lock	Fulton	Australia	25-70mm <sup>2</sup>	56mm	Gunmetal ETP	304 Stainless	Each 950g	25	595-A4



Lineguard 160A



Mini Wedge

**LINEGUARD DISCONNECTS & MINI WEDGE FUSEHOLDER**

Part Number	Description	Brand	Origin	Amps	Colour	Detail	Complies With	Unit	Weight	Box Qty
<b>Lineguard Disconnects</b>										
468177	NZI 100A Single Phase Ferrule Disconnect	NZI	NZ	100A	Black	Polyamide & Nickle-Plated NFM	IEC 60947	Each	545g	20
468185	NZI 160A Single Phase NH00 Disconnect	NZI	NZ	160A	Black	Polyamide & Nickle-Plated NFM	IEC 60947	Each	505g	20
<b>Porcelain Mini Wedge Fuseholder</b>										
468789	NZI Mini Wedge Offset Tag Carrier/Base Complete	NZI	NZ	200A	Grey	Porcelain & ETPNFM	AS/NZS 3947	Each	3.0kg	5



3 x FSD 401



FSD 401



FSD 401 Bracket

FSD400



FSD401

### FSD THREE & SINGLE PHASE DIN FUSE DISCONNECTS (AS/NZS 3947-1)

Part Number	Description	Brand	Origin	Rated Amps	Fits	Terminations	Weight	Box Qty	Drawing	
<b>FSD 160A Disconnects</b>										
539252	NGK-S FSD160 Single Phase	NGK-S	Australia	415V	160A	NH00	IPC/IPC 6-95mm <sup>2</sup>	1.0kg	1	71932
539260	NGK-S Bracket for 3 x FSD160	NGK-S	Australia	415V				1.7kg	1	72485/2
<b>FSD 250A Disconnects</b>										
539279	NGK-S FSD250 Three Phase + Bracket	NGK-S	Australia	415V	250A	NH1&2	IPC/IPC 6-95mm <sup>2</sup>	6.0kg	1	72477/1
<b>FSD 400A Disconnects</b>										
468908	NGK-S FSD400 Three Phase + Bracket	NGK-S	Australia	415V	400A	NH1&2	4.76mm T/Palms	6.0kg	1	71969/5
468916	NGK-S FSD401 Single Phase	NGK-S	Australia	415V	400A	NH1&2	4.76mm T/Palms	2.0kg	1	73401/5
469106	NGK-S Bracket for 3 x FSD401	NGK-S	Australia	415V				1.7kg	1	72923
<b>FSD 630A Disconnect</b>										
468819	NGK-S FSD631 Single Phase	NGK-S	Australia	415V	630A	NH2&3	6.35mm T/Palms	2.0kg	1	73631/5





60A Rewireable



30A Rewireable



Rewireable Cutout

**REWIREABLE PORCELAIN POLE MOUNTED CUTOUTS**

Part Number	Description	Brand	Origin	Amps	Wired?	Glaze	Construction	Unit	Weight	Box Qty
<b>30A Rewireable Cutouts</b>										
144029	NZI 30A RW Plug + Base	NZI	NZ	30A		Grey	Porcelain & ETPNFM	Each	690g	30
146137	NZI 30A RW Plug + Base + Wired	NZI	NZ	30A	Wired	Grey	Porcelain & ETPNFM	Each	690g	30
144452	NZI 30A RW Plug Only	NZI	NZ	30A		Grey	Porcelain & ETPNFM	Each	190g	54
144061	NZI 30A RW Plug + Wired	NZI	NZ	30A	Wired	Grey	Porcelain & ETPNFM	Each	190g	30
144495	NZI 30A Universal Cutout Base	NZI	NZ	30A		Grey	Porcelain & ETPNFM	Each	460g	30
<b>60A Rewireable Cutouts</b>										
144398	NZI 60A RW Plug + Base	NZI	NZ	60A		Grey	Porcelain & ETPNFM	Each	1.5kg	15
146110	NZI 60A RW Plug + Base + Wired	NZI	NZ	60A	Wired	Grey	Porcelain & ETPNFM	Each	1.5kg	15
144444	NZI 60A RW Plug Only	NZI	NZ	60A		Grey	Porcelain & ETPNFM	Each	380g	30
146129	NZI 60A RW Plug + Wired	NZI	NZ	60A	Wired	Grey	Porcelain & ETPNFM	Each	380g	15
144509	NZI 60A Universal Cutout Base	NZI	NZ	60A		Grey	Porcelain & ETPNFM	Each	1.1kg	15
<b>100A Rewireable Cutouts</b>										
144916	NZI 100A RW Plug + Base	NZI	NZ	100A		Grey	Porcelain & ETPNFM	Each	3.1kg	6
146145	NZI 100A RW Plug + Base + Wired	NZI	NZ	100A	Wired	Grey	Porcelain & ETPNFM	Each	3.1kg	6
144959	NZI 100A RW Plug Only	NZI	NZ	100A		Grey	Porcelain & ETPNFM	Each	720g	6
144703	NZI 100A RW Plug + Wired	NZI	NZ	100A	Wired	Grey	Porcelain & ETPNFM	Each	720g	6



30A



60A



Top View



60A HRC

## HRC PORCELAIN POLE MOUNTED CUTOUTS

Part Number	Description	Brand	Origin	Amps	Fuse Included?	Glaze	Construction	Unit	Weight	Box Qty
<b>30A HRC Cutouts</b>										
144037	NZI 30A HRC Plug + Base	NZI	NZ	30A	–	Grey	Porcelain & ETPNFM	Each	620g	30
144118	NZI 30A HRC Plug Only	NZI	NZ	30A	–	Grey	Porcelain & ETPNFM	Each	130g	30
144495	NZI 30A Universal Cutout Base	NZI	NZ	30A	–	Grey	Porcelain & ETPNFM	Each	460g	30
<b>60A HRC Cutouts</b>										
144401	NZI 60A HRC Plug + Base	NZI	NZ	60A	–	Grey	Porcelain & ETPNFM	Each	1.7kg	15
144460	NZI 60A HRC Plug + Base + 60KR85	NZI	NZ	60A	60KR85	Grey	Porcelain & ETPNFM	Each	1.8kg	15
144525	NZI 60A HRC Plug Only	NZI	NZ	60A	–	Grey	Porcelain & ETPNFM	Each	595g	30
144630	NZI 60A HRC Plug + 60KR85	NZI	NZ	60A	60KR85	Grey	Porcelain & ETPNFM	Each	645g	30
144509	NZI 60A Universal Cutout Base	NZI	NZ	60A	–	Grey	Porcelain & ETPNFM	Each	1.1kg	15



Economy G06



Safeclip SC32H



Safeloc 32NNSF



Safeloc 32NNSBS

**32A FUSEHOLDERS FOR STAGGERED TAG FUSELINKS**

Part Number	Description	Brand	Origin	Rating	Voltage	Configuration	Colour	Unit	Weight	Box Qty
<b>Economy G06 Fuseholders (AS/NZS 60269)</b>										
540161	32A G06 EE/EE Fuseholder	None	China	32A	550V	End Entry End Entry	Black	Each	85g	5
540757	32A G06 BE/BE Fuseholder	None	China	32A	550V	Back Entry Back Entry	Black	Each	85g	5
<b>Safeclip NSD Fuseholder (IEC 60269)</b>										
545031	Bussmann GE SC32H Front Wired	Bussmann	UK	32A	550V	Front Wired Front Wired	Black	Each	95g	10
<b>Safeloc NSD Fuseholders (IEC 60269)</b>										
545007	Bussmann 32NNSF Front Wired	Bussmann	India	32A	550V	Front Wired Front Wired	Black	Each	85g	10
545015	Bussmann 32NNSR Back Wired	Bussmann	India	32A	550V	Back Wired Back Wired	Black	Each	85g	10
540803	Bussmann 32NNSBS Back Stud	Bussmann	India	32A	550V	Back Stud Back Stud	Black	Each	115g	10
545023	Bussmann 32NNSFBS Front Wired Back Stud	Bussmann	India	32A	550V	Front Wired Back Stud	Black	Each	100g	10



G06



H07



NITD

## G06, H07 &amp; NITD HRC FUSELINKS (CLASS gG)

Part Number	Description	Brand	Origin	Amps	Volts	Break	Tags	Unit	Box Qty
<b>G06 Staggered Fuselinks</b>									
644609	2G06 (NSD2)	Bussmann	India	2A	550V	80kA	Staggered	Each	20
644617	4G06 (NSD4)	Bussmann	India	4A	550V	80kA	Staggered	Each	20
644625	6G06 (NSD6)	Bussmann	India	6A	550V	80kA	Staggered	Each	20
644633	10G06 (NSD10)	Bussmann	India	10A	550V	80kA	Staggered	Each	20
644641	16G06 (NSD16)	Bussmann	India	16A	550V	80kA	Staggered	Each	20
644668	20G06 (NSD20)	Bussmann	India	20A	550V	80kA	Staggered	Each	20
646881	25G06 (NSD25)	Bussmann	India	25A	550V	80kA	Staggered	Each	20
646903	32G06 (NSD32)	Bussmann	India	32A	550V	80kA	Staggered	Each	20
<b>H07 Offset Fuselinks</b>									
645303	2H07 (AA02)	Bussmann	India	2A	550V	80kA	Offset Bolted	Each	20
645311	4H07 (AA04)	Bussmann	India	4A	550V	80kA	Offset Bolted	Each	20
645338	6H07 (AA06)	Bussmann	India	6A	550V	80kA	Offset Bolted	Each	20
645346	10H07 (AA010)	Bussmann	India	10A	550V	80kA	Offset Bolted	Each	20
645354	16H07 (AA016)	Bussmann	India	16A	550V	80kA	Offset Bolted	Each	20
645362	20H07 (AA020)	Bussmann	India	20A	550V	80kA	Offset Bolted	Each	20
645370	25H07 (AA025)	Bussmann	India	25A	550V	80kA	Offset Bolted	Each	20
645389	32H07 (AA032)	Bussmann	India	32A	550V	80kA	Offset Bolted	Each	20
<b>NITD Offset Fuselinks</b>									
641332	NITD2	Bussmann	India	2A	550V	80kA	Offset Slotted	Each	20
641340	NITD4	Bussmann	India	4A	550V	80kA	Offset Slotted	Each	20
641359	NITD6	Bussmann	India	6A	550V	80kA	Offset Slotted	Each	20
641367	NITD10	Bussmann	India	10A	550V	80kA	Offset Slotted	Each	20
641375	NITD16	Bussmann	India	16A	550V	80kA	Offset Slotted	Each	20
641383	NITD20	Bussmann	India	20A	550V	80kA	Offset Slotted	Each	20
641391	NITD25	Bussmann	India	25A	550V	80kA	Offset Slotted	Each	20
641405	NITD32	Bussmann	India	32A	550V	80kA	Offset Slotted	Each	20



Red Spot Fuseholders now through NZI



Camaster CM63F



Red Spot RS63H

**63A FUSEHOLDERS FOR OFFSET TAG FUSELINKS**

Part Number	Description	Brand	Origin	Rating	Voltage	Configuration	Colour	Unit	Weight	Box Qty
<b>Camaster 63A Cam Action Fuseholders (IEC 60269)</b>										
692034	Bussmann Camaster CM63F Front Wired	Bussmann	India	63A	690V	Front Wired Front Wired	Black	Each	200g	5
692816	Bussmann Camaster CM63FW Front Wired White	Bussmann	India	63A	690V	Back Wired Back Wired	White	Each	200g	5
692123	Bussmann 63/100BS Back Stud for Camaster 63A	Bussmann	India	63/100A	690V	Back Stud Accessory	Black	Each	60g	5
<b>Red Spot 63A Fuseholders (IEC 60269)</b>										
692824	Bussmann Red Spot RS63H Front Wired	Bussmann	UK	63A	690V	Front Wired Front Wired	Black	Each	310g	10
692859	Bussmann Red Spot RS63HWH Front Wired White	Bussmann	UK	63A	690V	Front Wired Front Wired	White	Each	310g	10
692832	Bussmann Red Spot RS63P Back Stud	Bussmann	UK	63A	690V	Back Stud Back Stud	Black	Each	450g	10
692867	Bussmann Red Spot RS63PWH Back Stud White	Bussmann	UK	63A	690V	Back Stud Back Stud	White	Each	450g	10
692840	Bussmann Red Spot RS63PH Front Wired BS	Bussmann	UK	63A	690V	Front Wired Back Stud	Black	Each	380g	10



BS/BE

EB/EE



NZI 63A K07 Fuseholders, made in Temuka



Side View



BE/BE

## 63A FUSEHOLDERS FOR OFFSET TAG FUSELINKS

Part Number	Description	Brand	Origin	Amps	Rating	Configuration	Unit	Colour	Weight
<b>63A K07 HG Phenolic Fuseholders (AS/NZS 60269)</b>									
676004	NZI K07 63A EE/EE Fuseholder	NZI	NZ	63A	500V	End Entry End Entry	Each	Black	260g
676012	NZI K07 63A BE/BE Fuseholder	NZI	NZ	63A	500V	Back Entry Back Entry	Each	Black	270g
676020	NZI K07 63A BE/EE Fuseholder	NZI	NZ	63A	500V	Back Entry End Entry	Each	Black	265g
678023	NZI K07 63A BS/BE Fuseholder	NZI	NZ	63A	500V	Back Stud Back Entry	Each	Black	320g
678031	NZI K07 63A BS/EE Fuseholder	NZI	NZ	63A	500V	Back Stud End Entry	Each	Black	320g
678058	NZI K07 63A BB/EE Fuseholder	NZI	NZ	63A	500V	Back Busbar End Entry	Each	Black	290g
678066	NZI K07 63A EB/EE Fuseholder	NZI	NZ	63A	500V	End Busbar End Entry	Each	Black	280g
678074	NZI K07 63A EB/BE Fuseholder	NZI	NZ	63A	500V	End Busbar Back Entry	Each	Black	280g
678007	NZI K07 63A BS/BS Fuseholder	NZI	NZ	63A	500V	Two Back Studs	Each	Black	380g



K07



L09



L14

**K07, L14 & M14 HRC FUSELINKS (CLASS gG)**

Part Number	Description	Brand	Origin	Amps	Volts	Break	Tags	Unit	Box Qty
<b>K07 Offset Fuselinks</b>									
645664	40K07 (BA040)	Bussmann	India	40A	550V	80kA	Offset	Each	20
645680	50K07 (BA050)	Bussmann	India	50A	550V	80kA	Offset	Each	20
645702	63K07 (BA063)	Bussmann	India	63A	550V	80kA	Offset	Each	20
692336	80K07R (OSD80)	Bussmann	India	80A	550V	80kA	Offset	Each	20
692344	100K07R (OSD100)	Bussmann	India	100A	550V	80kA	Offset	Each	20
<b>L09 Offset Fuselinks</b>									
646458	80L09 (CD80)	Bussmann	India	80A	550V	80kA	Offset	Each	10
646466	100L09 (CD100)	Bussmann	India	100A	550V	80kA	Offset	Each	10
<b>L14 Offset Fuselinks</b>									
646512	32L14 (CE032)	Bussmann	India	32A	550V	80kA	Offset	Each	10
646520	40L14 (CE040)	Bussmann	India	40A	550V	80kA	Offset	Each	10
646539	50L14 (CE050)	Bussmann	India	50A	550V	80kA	Offset	Each	10
646547	63L14 (CE063)	Bussmann	India	63A	550V	80kA	Offset	Each	10
646555	80L14 (CE080)	Bussmann	India	80A	550V	80kA	Offset	Each	10
646563	100L14 (CE0100)	Bussmann	India	100A	550V	80kA	Offset	Each	10



M14



M09



N09



P09

### M14, M09, N09 & P09 HRC FUSELINKS (CLASS gG)

Part Number	Description	Brand	Origin	Amps	Volts	Break	Tags	Unit	Box Qty
<b>M14 Offset Fuselinks</b>									
646636	125M14 (DEO125)	Bussmann	India	125A	415V	80kA	Offset	Each	5
646652	160M14 (DEO160)	Bussmann	India	160A	415V	80kA	Offset	Each	5
646660	200M14 (DEO200)	Bussmann	India	200A	415V	80kA	Offset	Each	5
<b>M09 Central Fuselinks</b>									
646571	125M09 (DD125)	Bussmann	India	125A	415V	80kA	Central	Each	5
646601	160M09 (DD160)	Bussmann	India	160A	415V	80kA	Central	Each	5
646628	200M09 (DD200)	Bussmann	India	200A	415V	80kA	Central	Each	5
<b>N09 Central Fuselinks</b>									
646709	250N09 (ED250)	Bussmann	India	250A	415V	80kA	Central	Each	1
646717	315N09 (ED315)	Bussmann	India	315A	415V	80kA	Central	Each	1
<b>P09 Central Fuselinks</b>									
646679	355P09 (ED355)	Bussmann	India	355A	415V	80kA	Central	Each	1
646687	400P09 (ED400)	Bussmann	India	400A	415V	80kA	Central	Each	1





N11



P11



R11

**N11, P11 & R11 HRC FUSELINKS (CLASS gG)**

Part Number	Description	Brand	Origin	Amps	Volts	Break	Tags	Unit	Box Qty
<b>N11 Central Fuselinks</b>									
646768	250N11 (EFS250)	Bussmann	India	250A	415V	80kA	Central	Each	1
646776	315N11 (EFS315)	Bussmann	India	315A	415V	80kA	4-Hole Central	Each	1
<b>P11 Central Fuselinks</b>									
647942	355P11 (EF355)	Bussmann	India	355A	415V	80kA	4-Hole Central	Each	1
646644	400P11 (EF400)	Bussmann	India	400A	415V	80kA	4-Hole Central	Each	1
<b>R11 Central Fuselinks</b>									
646946	450R11 (FF450)	Bussmann	India	450A	690V	80kA	4-Hole Central	Each	1
646954	500R11 (FF500)	Bussmann	India	500A	690V	80kA	4-Hole Central	Each	1
646962	560R11 (FF560)	Bussmann	India	560A	690V	80kA	4-Hole Central	Each	1
646970	630R11 (FF630)	Bussmann	India	630A	690V	80kA	4-Hole Central	Each	1



NZI 100A



Red Spot RS100H



NZI 100A



Red Spot RS200H

## 100+A FUSEHOLDERS FOR OFFSET &amp; CENTRAL TAG FUSELINKS

Part Number	Description	Brand	Origin	Rating	Voltage	Configuration	Colour	Unit	Weight	Box Qty
<b>NZI 100A L14 Fuseholder (BS88 Part2 1975)</b>										
678678	NZI L14 100A EE/EE Fuseholder	NZI	NZ	100A	500V	End Entry End Entry	Black	Each	870g	5
<b>Camaster 100A Cam Action Fuseholders (IEC 60269)</b>										
692042	Bussmann Camaster CM100F Front Wired	Bussmann	India	100A	690V	Front Wired Front Wired	Black	Each	210g	5
692123	Bussmann 63/100BS Back Stud for Camaster 63A	Bussmann	India	63/100A	690V	Back Stud Accessory	Black	Each	60g	5
<b>Red Spot 100A Fuseholders (IEC 60269)</b>										
692905	Bussmann Red Spot RS100H Front Wired 100A	Bussmann	UK	100A	690V	Front Wired Front Wired	Black	Each	850g	5
692875	Bussmann Red Spot RS100BW Back Wired 100A	Bussmann	UK	100A	690V	Back Wired Back Wired	Black	Each	795g	5
692913	Bussmann Red Spot RS100P Back Stud 100A	Bussmann	UK	100A	690V	Back Stud Back Stud	Black	Each	970g	5
692921	Bussmann Red Spot RS100PH Front Wired BS 100A	Bussmann	UK	100A	690V	Front Wired Back Stud	Black	Each	915g	5
<b>Red Spot 200A Fuseholders (IEC 60269)</b>										
692948	Bussmann Red Spot RS200H Front Wired 200A	Bussmann	UK	200A	690V	Front Wired Front Wired	Black	Each	2.1kg	1
<b>Red Spot 400A Fuseholders (IEC 60269)</b>										
692956	Bussmann Red Spot RS400H Front Wired 400A	Bussmann	UK	400A	690V	Front Wired Front Wired	Black	Each		1



G06 Motor Circuit



H07 Motor Circuit



K07 Motor Circuit



P11 Motor Circuit

## MOTOR RATED HRC FUSELINKS (CLASS gG)

Part Number	Description	Brand	Origin	Amps	Volts	Break	Tags	Unit	Box Qty
<b>G06 Motor Circuit Fuses</b>									
649201	20M25 G06 MC (NSD20M25)	Bussmann	India	20M25	550V	80kA	Staggered	Each	20
649228	20M32 G06 MC (NSD20M32)	Bussmann	India	20M32	550V	80kA	Staggered	Each	20
649236	32M40 G06 MC (NSD32M40)	Bussmann	India	32M40	550V	80kA	Staggered	Each	20
<b>H07 Motor Circuit Fuses</b>									
649368	32M40 H07 MC (AA032M40)	Bussmann	India	32M40	550V	80kA	Offset	Each	20
649384	32M50 H07 MC (AA032M50)	Bussmann	India	32M50	550V	80kA	Offset	Each	20
649392	32M63 H07 MC (AA032M63)	Bussmann	India	32M63	550V	80kA	Offset	Each	20
<b>K07 Motor Circuit Fuses</b>									
649457	63M80 K07 MC (BA063M80)	Bussmann	India	63M80	550V	80kA	Offset	Each	20
649465	63M100 K07 MC (BA063M100)	Bussmann	India	63M100	550V	80kA	Offset	Each	20
<b>Other Motor Circuit Fuses</b>									
649651	100M125 L09 MC (CD100M125)	Bussmann	India	100M125	415V	80kA	Central	Each	10
649597	100M125 L14 MC (CEO100M125)	Bussmann	India	100M125	415V	80kA	Offset	Each	10
649678	100M160 L09 MC (CD100M160)	Bussmann	India	100M160	415V	80kA	Central	Each	10
649619	100M160 L14 MC (CEO100M160)	Bussmann	India	100M160	415V	80kA	Offset	Each	10
649627	100M200 L14 MC (CEO100M200)	Bussmann	India	100M200	415V	80kA	Offset	Each	10
649694	200M250 M09 MC (DD200M250)	Bussmann	India	200M250	415V	80kA	Central	Each	5
649643	200M250 M14 MC (DE0200M250)	Bussmann	India	200M250	415V	80kA	Offset	Each	5
649724	315M400 N09 MC (ED315M400)	Bussmann	India	315M400	415V	80kA	Central	Each	1
646695	400M500 P09 MC (ED400M500)	Bussmann	India	400M500	415V	80kA	Central	Each	1
647950	400M500 P11 MC (EF400M500)	Bussmann	India	400M500	550V	80kA	Central	Each	1



60KR85

### KR85 HOUSE SERVICE HRC FUSELINKS (CLASS gG TO BS1361)

Part Number	Description	Brand	Origin	Amps	Volts	Break	Configuration	Unit	Box Qty
<b>KR85 House Service Fuses</b>									
647802	5A (5KR85)	Bussmann	India	5A	415V	33kA	22x57mm Ferrule	Each	20
647810	10A (10KR85)	Bussmann	India	10A	415V	33kA	22x57mm Ferrule	Each	20
647829	15A (15KR85)	Bussmann	India	15A	415V	33kA	22x57mm Ferrule	Each	20
647837	20A (20KR85)	Bussmann	India	20A	415V	33kA	22x57mm Ferrule	Each	20
647845	25A (25KR85)	Bussmann	India	25A	415V	33kA	22x57mm Ferrule	Each	20
647853	30A (30KR85)	Bussmann	India	30A	415V	33kA	22x57mm Ferrule	Each	20
647861	40A (40KR85)	Bussmann	India	40A	415V	33kA	22x57mm Ferrule	Each	20
647888	45A (45KR85)	Bussmann	India	45A	415V	33kA	22x57mm Ferrule	Each	20
647896	50A (50KR85)	Bussmann	India	50A	415V	33kA	22x57mm Ferrule	Each	20
647918	60A (60KR85)	Bussmann	India	60A	415V	33kA	22x57mm Ferrule	Each	20
647926	80A (80KR85)	Bussmann	India	80A	415V	33kA	22x57mm Ferrule	Each	20
647934	100A (100KR85)	Bussmann	India	100A	415V	33kA	22x57mm Ferrule	Each	20



NH00 Base



NH1 Base



NH2 Base



NH1 3P3P



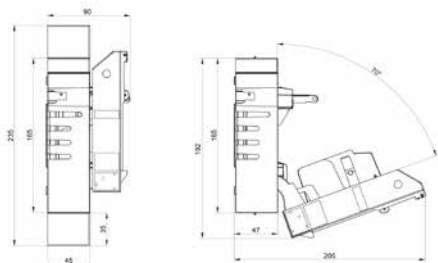
NH2 1PSP

## EFEN DIN FUSE DISCONNECTS (TO IEC 947-3)

Part Number	Description	Brand	Origin	Efen Code	Amps	Poles	Phase	Unit	Weight	Box Qty
<b>Base Only</b>										
531049	Efen NH00 160A Base Only	Efen	Germany	33000-0050	160A			Each	80g	3
530735	Efen NH1 250A Base Only	Efen	Germany	33027-0010	250A			Each	240g	3
531006	Efen NH2 400A Base Only	Efen	Germany	33032-0010	400A			Each	400g	3
<b>1 Pole (Single Phase)</b>										
531022	Efen NH00 160A Switch	Efen	Germany	33107-0010	160A	1	Single	Each	360g	1
531030	Efen NH1 250A Switch	Efen	Germany	33095-0010	250A	1	Single	Each	2.1kg	1
530964	Efen NH2 400A Switch	Efen	Germany	33096-0010	400A	1	Single	Each	2.1kg	1
530972	Efen NH3 630A Switch	Efen	Germany	33097-0010	630A	1	Single	Each	2.3kg	1
<b>Horizontal 3 Pole (Three Phase)</b>										
530859	Efen NH00 100A Switch	Efen	Germany	34050-0000	100A	3	Three	Each	500g	1
530409	Efen NH00 160A Switch	Efen	Germany	34060-0000	160A	3	Three	Each	600g	1
531928	Efen NH1 250A Switch	Efen	Germany	34162-0000	250A	3	Three	Each	2.1kg	1
530743	Efen NH2 400A Switch	Efen	Germany	34262-0000	400A	3	Three	Each	3.0kg	1
530727	Efen NH3 630A Switch	Efen	Germany	34362-0000	630A	3	Three	Each	4.0kg	1



NH00 3P3P



NH00 3P3P Dimensions

### BUSSMANN DIN FUSE DISCONNECTS

Part Number	Description	Brand	Origin	CB Code	Amps	Poles	Phase	Standard	Unit	Box Qty
<b>Base Only</b>										
697001	NH00 160A Base Only	Bussmann	Czech	SD00-D	160A	1	Single	IEC 60269	Each	3
697028	NH1 250A Base Only	Bussmann	Czech	SD1-D	250A	1	Single	IEC 60269	Each	3
697036	NH2 400A Base Only	Bussmann	Czech	SD2-D	400A	1	Single	IEC 60269	Each	3
<b>1 Pole (Single Phase)</b>										
697044	NH00 160A Switch	Bussmann	Czech	BFH00-1A/F	160A	1	Single	IEC 60947-1	Each	1
697052	NH1 250A Switch	Bussmann	Czech	BFH1-1A/F	250A	1	Single	IEC 60947-1	Each	1
697060	NH2 400A Switch	Bussmann	Czech	BFH2-1A/F	400A	1	Single	IEC 60947-1	Each	1
<b>Horizontal 3 Pole (Three Phase)</b>										
697079	NH00 160A Switch	Bussmann	Czech	BFH00-3A/F	160A	3	Three	IEC 60947-1	Each	1
697087	NH1 250A Switch	Bussmann	Czech	BFH1-3A/F	250A	3	Three	IEC 60947-1	Each	1
697095	NH2 400A Switch	Bussmann	Czech	BFH2-3A/F	400A	3	Three	IEC 60947-1	Each	1
697109	NH3 630A Switch	Bussmann	Czech	BFH3-3A/F	630A	3	Three	IEC 60947-1	Each	1



Solid Link Blade



NH000

**DIN SOLID LINK & NH000 HRC FUSES (CLASS gG)**

Part Number	Description	Brand	Origin	Amps	Volts	Break	Configuration	Unit	Box Qty
<b>Solid Link Blades</b>									
688983	160A Solid Link 00 (SL00)	Bussmann	India	160A	500V	120kA	Solid Link	Each	3
657115	250A Solid Link 1 (SL1)	Bussmann	India	250A	500V	120kA	Solid Link	Each	3
689300	400A Solid Link 2 (SL2)	Bussmann	India	400A	500V	120kA	Solid Link	Each	3
657131	630A Solid Link 3 (SL3)	Bussmann	India	630A	500V	120kA	Solid Link	Each	3
<b>NH000 DIN Fuselinks</b>									
688584	10A NH000 (10NHG000B)	Bussmann	India	10A	500V	120kA	DIN Blade	Each	3
690317	16A NH000 (16NHG000B)	Bussmann	India	16A	500V	120kA	DIN Blade	Each	3
689130	20A NH000 (20NHG000B)	Bussmann	India	20A	500V	120kA	DIN Blade	Each	3
689149	32A NH000 (32NHG000B)	Bussmann	India	32A	500V	120kA	DIN Blade	Each	3
689238	40A NH000 (40NHG000B)	Bussmann	India	40A	500V	120kA	DIN Blade	Each	3
689165	50A NH000 (50NHG000B)	Bussmann	India	50A	500V	120kA	DIN Blade	Each	3
689173	63A NH000 (63NHG000B)	Bussmann	India	63A	500V	120kA	DIN Blade	Each	3
689181	80A NH000 (80NHG000B)	Bussmann	India	80A	500V	120kA	DIN Blade	Each	3
689203	100A NH000 (100NHG000B)	Bussmann	India	100A	500V	120kA	DIN Blade	Each	3



NH00



NH0

## DIN NH00 &amp; NH0 HRC FUSES (CLASS gG)

Part Number	Description	Brand	Origin	Amps	Volts	Break	Configuration	Unit	Box Qty
<b>NH00 DIN Fuselinks</b>									
689211	125A NH00 (125NHG00B)	Bussmann	India	125A	500V	120kA	DIN Blade	Each	3
689491	160A NH00 (160NHG00B)	Bussmann	India	160A	500V	120kA	DIN Blade	Each	3
<b>NH0 DIN Fuselinks</b>									
665290	10A NH0 (16NHG0B)	Bussmann	India	10A	500V	120kA	Blade Type	Each	3
689378	16A NH0 (16NHG0B)	Bussmann	India	16A	500V	120kA	Blade Type	Each	3
689831	20A NH0 (20NHG0B)	Bussmann	India	20A	500V	120kA	Blade Type	Each	3
688576	25A NH0 (25NHG0B)	Bussmann	India	25A	500V	120kA	Blade Type	Each	3
693162	32A NH0 (32NHG0B)	Bussmann	India	32A	500V	120kA	Blade Type	Each	3
689963	40A NH0 (40NHG0B)	Bussmann	India	40A	500V	120kA	Blade Type	Each	3
689858	50A NH0 (50NHG0B)	Bussmann	India	50A	500V	120kA	Blade Type	Each	3
689319	63A NH0 (63NHG0B)	Bussmann	India	63A	500V	120kA	Blade Type	Each	3
689327	80A NH0 (80NHG0B)	Bussmann	India	80A	500V	120kA	Blade Type	Each	3
689335	100A NH0 (100NHG0B)	Bussmann	India	100A	500V	120kA	Blade Type	Each	3
689343	125A NH0 (125NHG0B)	Bussmann	India	125A	500V	120kA	Blade Type	Each	3
689351	160A NH0 (160NHG0B)	Bussmann	India	160A	500V	120kA	Blade Type	Each	3





NH1



Top



Side

DIN NH1 HRC FUSES (CLASS gG)

Part Number	Description	Brand	Origin	Amps	Volts	Break	Configuration	Unit	Box Qty
<b>NH1 DIN Fuselinks</b>									
689866	16A NH1 (16NHG01B)	Bussmann	India	16A	500V	120kA	Blade Type	Each	3
689688	20A NH1 (20NHG01B)	Bussmann	India	20A	500V	120kA	Blade Type	Each	3
689432	25A NH1 (25NHG01B)	Bussmann	India	25A	500V	120kA	Blade Type	Each	3
692530	32A NH1 (32NHG01B)	Bussmann	India	32A	500V	120kA	Blade Type	Each	3
686700	40A NH1 (40NHG01B)	Bussmann	India	40A	500V	120kA	Blade Type	Each	3
689416	50A NH1 (50NHG01B)	Bussmann	India	50A	500V	120kA	Blade Type	Each	3
689424	63A NH1 (63NHG01B)	Bussmann	India	63A	500V	120kA	Blade Type	Each	3
689084	80A NH1 (80NHG01B)	Bussmann	India	80A	500V	120kA	Blade Type	Each	3
689440	100A NH1 (100NHG01B)	Bussmann	India	100A	500V	120kA	Blade Type	Each	3
689459	125A NH1 (125NHG01B)	Bussmann	India	125A	500V	120kA	Blade Type	Each	3
689467	160A NH1 (160NHG01B)	Bussmann	India	160A	500V	120kA	Blade Type	Each	3
689475	200A NH1 (200NHG1B)	Bussmann	India	200A	500V	120kA	Blade Type	Each	3
661066	224A NH1 (224NHG1B)	Bussmann	India	224A	500V	120kA	Blade Type	Each	3
689939	250A NH1 (250NHG1B)	Bussmann	India	250A	500V	120kA	Blade Type	Each	3



NH2



NH3

## DIN NH2 &amp; NH3 HRC FUSES (CLASS gG)

Part Number	Description	Brand	Origin	Amps	Volts	Break	Configuration	Unit	Box Qty
<b>NH2 DIN Fuselinks</b>									
686735	50A NH2 (50NHG02B)	Bussmann	India	50A	500V	120kA	Blade Type	Each	3
689548	63A NH2 (63NHG02B)	Bussmann	India	63A	500V	120kA	Blade Type	Each	3
689998	80A NH2 (80NHG02B)	Bussmann	India	80A	500V	120kA	Blade Type	Each	3
689882	100A NH2 (100NHG02B)	Bussmann	India	100A	500V	120kA	Blade Type	Each	3
689564	125A NH2 (125NHG02B)	Bussmann	India	125A	500V	120kA	Blade Type	Each	3
689572	160A NH2 (160NHG02B)	Bussmann	India	160A	500V	120kA	Blade Type	Each	3
689580	200A NH2 (200NHG02B)	Bussmann	India	200A	500V	120kA	Blade Type	Each	3
685860	224A NH2 (224NHG02B)	Bussmann	India	224A	500V	120kA	Blade Type	Each	3
689890	250A NH2 (250NHG02B)	Bussmann	India	250A	500V	120kA	Blade Type	Each	3
689610	315A NH2 (315NHG2B)	Bussmann	India	315A	500V	120kA	Blade Type	Each	3
689629	355A NH2 (355NHG2B)	Bussmann	India	355A	500V	120kA	Blade Type	Each	3
689637	400A NH2 (400NHG2B)	Bussmann	India	400A	500V	120kA	Blade Type	Each	3
<b>NH3 DIN Fuselinks</b>									
689645	315A NH3 (315NHG03B)	Bussmann	India	315A	500V	120kA	Blade Type	Each	3
689556	355A NH3 (355NHG03B)	Bussmann	India	355A	500V	120kA	Blade Type	Each	3
689599	400A NH3 (400NHG03B)	Bussmann	India	400A	500V	120kA	Blade Type	Each	3
689696	500A NH3 (500NHG3B)	Bussmann	India	500A	500V	120kA	Blade Type	Each	3
689718	630A NH3 (630NHG3B)	Bussmann	India	630A	500V	120kA	Blade Type	Each	3



300-1



160MJ29

**76mm J-TYPE FUSELINKS & CARRIERS**

Part Number	Description	Brand	Origin	Amps	Volts	Fixing Centre	Standard	Unit	Box Qty
<b>76mm J-Type Fuselinks</b>									
647233	63A 76mm (63MJ29-6)	Bussmann	India	63A	415V	76mm	IEC 60269-1	Each	5
647268	100A 76mm (100MJ29-6)	Bussmann	India	100A	415V	76mm	IEC 60269-1	Each	5
647276	125A 76mm (125MJ29-6)	Bussmann	India	125A	415V	76mm	IEC 60269-1	Each	5
647284	160A 76mm (160MJ29-6)	Bussmann	India	160A	415V	76mm	IEC 60269-1	Each	5
647292	200A 76mm (200MJ29-6)	Bussmann	India	200A	415V	76mm	IEC 60269-1	Each	5
647306	250A 76mm (250MJ29-6)	Bussmann	India	250A	415V	76mm	IEC 60269-1	Each	5

Part Number	Description	Brand	Origin	Amps	Colour	Construction	Standard	Unit	Weight	Box Qty
<b>Carrier for J-Type 76mm Fuses</b>										
468622	NZI 300-1 Shrouded Carrier	NZI	NZ	200A	White	Porcelain & ETPNFM	AS/NZS 3947	Each	600g	1
470732*	NZI 300-8 Base Only	NZI	NZ	200A		Formica & ETPNFM	AS/NZS 3947	Each	700g	1

\* Limited stock available.

## BUSSMANN 82 J-TYPE Fuses & Carriers

325-7



325 Shorting Link



325-5



200MJ30-7

### 82mm J-TYPE FUSELINKS & CARRIERS

Part Number	Description	Brand	Origin	Amps	Volts	Fixing Centre	Standard	Unit	Box Qty
<b>82mm J-Type Fuselinks</b>									
647373	32A 82mm (32MJ30-8)	Bussmann	India	32A	415V	82mm	IEC 60269-1	Each	5
647381	40A 82mm (40MJ30-8)	Bussmann	India	40A	415V	82mm	IEC 60269-1	Each	5
647403	63A 82mm (63MJ30-8)	Bussmann	India	63A	415V	82mm	IEC 60269-1	Each	5
647411	80A 82mm (80MJ30-7)	Bussmann	India	80A	415V	82mm	IEC 60269-1	Each	5
647438	100A 82mm (100MJ30-7)	Bussmann	India	100A	415V	82mm	IEC 60269-1	Each	5
647446	125A 82mm (125MJ30-7)	Bussmann	India	125A	415V	82mm	IEC 60269-1	Each	5
647454	160A 82mm (160MJ30-7)	Bussmann	India	160A	415V	82mm	IEC 60269-1	Each	5
647462	200A 82mm (200MJ30-7)	Bussmann	India	200A	415V	82mm	IEC 60269-1	Each	5
647470	250A 82mm (250MJ30-7)	Bussmann	India	250A	415V	82mm	IEC 60269-1	Each	5
647489	315A 82mm (315MJ30-7)	Bussmann	India	315A	415V	82mm	IEC 60269-1	Each	5
647659	355A 82mm (355PJ30-7)	Bussmann	India	355A	415V	82mm	IEC 60269-1	Each	5
647667	400A 82mm (400PJ30-7)	Bussmann	India	400A	415V	82mm	IEC 60269-1	Each	5

Part Number	Description	Brand	Origin	Amps	Colour	Construction	Standard	Unit	Weight	Box Qty
<b>Carrier for J-Type 82mm Fuses</b>										
468592	NZI 325-5 Unshrouded Carrier	NZI	NZ	400A	Grey	Porcelain & ETPNFM	AS/NZS 3947	Each	900g	1
468614	NZI 325-7 Shrouded Carrier	NZI	NZ	400A	White	Porcelain & ETPNFM	AS/NZS 3947	Each	1.1kg	1
469726	NZI 325 Slotted Shorting Link	NZI	NZ	400A		Copper ETP	AS/NZS 3947	Each	110g	1
469858*	NZI 325-8 Base Only	NZI	NZ	400A		Formica & ETPNFM	AS/NZS 3947	Each	1.2kg	1

\* Limited stock available.



315MJ31-7

3625-7



3625-7 Top View



**92mm J-TYPE FUSELINKS & CARRIERS**

Part Number	Description	Brand	Origin	Amps	Volts	Fixing Centre	Standard	Unit	Box Qty	
<b>92mm J-Type Fuselinks</b>										
658650	32A 92mm (32MJ31-8)	Bussmann	India	32A	415V	92mm	IEC 60269-1	Each	5	
647535	40A 92mm (40MJ31-8)	Bussmann	India	40A	415V	92mm	IEC 60269-1	Each	5	
647543	63A 92mm (63MJ31-8)	Bussmann	India	63A	415V	92mm	IEC 60269-1	Each	5	
647551	80A 92mm (80MJ31-7)	Bussmann	India	80A	415V	92mm	IEC 60269-1	Each	5	
647578	100A 92mm (100MJ31-7)	Bussmann	India	100A	415V	92mm	IEC 60269-1	Each	5	
647586	125A 92mm (125MJ31-7)	Bussmann	India	125A	415V	92mm	IEC 60269-1	Each	5	
647594	160A 92mm (160MJ31-7)	Bussmann	India	160A	415V	92mm	IEC 60269-1	Each	5	
647608	200A 92mm (200MJ31-7)	Bussmann	India	200A	415V	92mm	IEC 60269-1	Each	5	
647616	250A 92mm (250MJ31-7)	Bussmann	India	250A	415V	92mm	IEC 60269-1	Each	5	
647624	315A 92mm (315MJ31-7)	Bussmann	India	315A	415V	92mm	IEC 60269-1	Each	5	
647675	355A 92mm (355PJ31-7)	Bussmann	India	355A	415V	92mm	IEC 60269-1	Each	5	
647683	400A 92mm (400PJ31-7)	Bussmann	India	400A	415V	92mm	IEC 60269-1	Each	5	
658782	450A 92mm (450RJ31-7)	Bussmann	India	450A	415V	92mm	IEC 60269-1	Each	5	
647756	500A 92mm (500RJ31-7)	Bussmann	India	500A	415V	92mm	IEC 60269-1	Each	5	
658804	560A 92mm (560SJ31-6)	Bussmann	India	560A	415V	92mm	IEC 60269-1	Each	5	
647772	630A 92mm (630SJ31-6)	Bussmann	India	630A	415V	92mm	IEC 60269-1	Each	5	
Part Number	Description	Brand	Origin	Amps	Colour	Construction	Standard	Unit	Weight	Box Qty
<b>Carrier for J-Type 92mm Fuses</b>										
471011	NZI 3625-7 Shrouded Carrier	NZI	NZ	600A	White	Porcelain & ETPNFM	AS/NZS 3947	Each	1.5kg	1



C10G32 10x38

## CYLINDRICAL 10x38 FUSELINKS (CLASS gG)

Part Number	Description	Brand	Origin	Amps	Volts	Break	Configuration	Unit	Box Qty
<b>10x38 HRC Fuselinks</b>									
654574	1A 10x38 Fuse (C10G1)	Bussmann	India	1A	500V	120kA	10x38mm Cylinder	Each	10
654299	2A 10x38 Fuse (C10G2)	Bussmann	India	2A	500V	120kA	10x38mm Cylinder	Each	10
654388	4A 10x38 Fuse (C10G4)	Bussmann	India	4A	500V	120kA	10x38mm Cylinder	Each	10
654302	6A 10x38 Fuse (C10G6)	Bussmann	India	6A	500V	120kA	10x38mm Cylinder	Each	10
654310	10A 10x38 Fuse (C10G10)	Bussmann	India	10A	500V	120kA	10x38mm Cylinder	Each	10
654329	16A 10x38 Fuse (C10G16)	Bussmann	India	16A	500V	120kA	10x38mm Cylinder	Each	10
654337	20A 10x38 Fuse (C10G20)	Bussmann	India	20A	500V	120kA	10x38mm Cylinder	Each	10
654353	25A 10x38 Fuse (C10G25)	Bussmann	India	25A	500V	120kA	10x38mm Cylinder	Each	10
654345	32A 10x38 Fuse (C10G32)	Bussmann	India	32A	500V	120kA	10x38mm Cylinder	Each	10
<b>Fuseholder for 10x38 Fuses (IEC 60269/60947)</b>									
666858	CHM1D Fuseholder	Bussmann	China	32A	690V	120kA	10x38mm Cylinder	Each	12



6LCT



20LCT



35LET



100LET



200LMT



450LMT

## BS88 'T' TYPE HIGH-SPEED 240V SEMI-CONDUCTOR HRC FUSELINKS

Part Number	Description	Brand	Origin	Amps	Volts AC	Volts DC	Fixing Centre	A2T	Unit	Box Qty
<b>240V LCT High Speed Fuses</b>										
684848	6LCT	Bussmann	India	6A	240V	150V	38mm	9	Each	20
684856	10LCT	Bussmann	India	10A	240V	150V	38mm	22	Each	20
684880	12LCT	Bussmann	India	12A	240V	150V	38mm	32	Each	20
684864	16LCT	Bussmann	India	16A	240V	150V	38mm	100	Each	20
684872	20LCT	Bussmann	India	20A	240V	150V	38mm	160	Each	20
<b>240V LET High Speed Fuses</b>										
685003	25LET	Bussmann	India	25A	240V	150V	42mm	250	Each	10
685011	32LET	Bussmann	India	32A	240V	150V	42mm	450	Each	10
685038	35LET	Bussmann	India	35A	240V	150V	42mm	600	Each	10
684937	50LET	Bussmann	India	50A	240V	150V	42mm	1400	Each	10
685046	63LET	Bussmann	India	63A	240V	150V	42mm	2200	Each	10
685054	80LET	Bussmann	India	80A	240V	150V	42mm	3800	Each	10
685062	100LET	Bussmann	India	100A	240V	150V	42mm	7500	Each	10
685070	125LET	Bussmann	India	125A	240V	150V	42mm	7500	Each	10
685089	160LET	Bussmann	India	160A	240V	150V	42mm	16000	Each	10
685097	180LET	Bussmann	India	180A	240V	150V	42mm	29000	Each	10
<b>240V LMT High Speed Fuses</b>										
685275	160LMT	Bussmann	India	160A	240V	150V	59mm	16000	Each	1
685283	200LMT	Bussmann	India	200A	240V	150V	59mm	20000	Each	1
685291	250LMT	Bussmann	India	250A	240V	150V	59mm	40000	Each	1
685305	315LMT	Bussmann	India	315A	240V	150V	59mm	75000	Each	1
685313	355LMT	Bussmann	India	355A	240V	150V	59mm	100000	Each	1
685321	400LMT	Bussmann	India	400A	240V	150V	59mm	160000	Each	1
685348	450LMT	Bussmann	India	450A	240V	150V	59mm	220000	Each	1

## BUSSMANN CT/FE/FEE/FM High Speed Fuses



### BS88 'T' TYPE HIGH-SPEED 690V SEMI-CONDUCTOR HRC FUSELINKS

Part Number	Description	Brand	Origin	Amps	Volts AC	Volts DC	Fixing Centre	A2T	Unit	Box Qty
<b>690V CT High Speed Fuses</b>										
690686	6CT	Bussmann	India	6A	690V	500V	64mm	12	Each	20
690694	10CT	Bussmann	India	10A	690V	500V	64mm	48	Each	20
690708	12CT	Bussmann	India	12A	690V	500V	64mm	65	Each	20
690716	16CT	Bussmann	India	16A	690V	500V	64mm	110	Each	20
690724	20CT	Bussmann	India	20A	690V	500V	64mm	220	Each	20
<b>690V FE High Speed Fuses</b>										
690791	35FE	Bussmann	India	35A	690V	500V	64mm	200	Each	20
690805	40FE	Bussmann	India	40A	690V	500V	64mm	200	Each	20
690813	45FE	Bussmann	India	45A	690V	500V	64mm	200	Each	20
690821	50FE	Bussmann	India	50A	690V	500V	64mm	200	Each	20
690848	63FE	Bussmann	India	63A	690V	500V	64mm	200	Each	20
<b>690V FEE High Speed Fuses</b>										
690899	100FEE	Bussmann	India	100A	690V	500V	70mm	2400	Each	5
690902	120FEE	Bussmann	India	120A	690V	500V	70mm	3100	Each	5
684503	140FEE	Bussmann	India	140A	690V	500V	70mm	3800	Each	5
690910	160FEE	Bussmann	India	160A	690V	500V	70mm	5700	Each	5
691003	200FEE	Bussmann	India	200A	690V	500V	70mm	11400	Each	5
<b>690V FM High Speed Fuses</b>										
690937	180FM	Bussmann	India	180A	690V	500V	85mm	13500	Each	1
690945	200FM	Bussmann	India	200A	690V	500V	85mm	18500	Each	1
691801	225FM	Bussmann	India	225A	690V	500V	85mm	26500	Each	1
690953	250FM	Bussmann	India	250A	690V	500V	85mm	37500	Each	1
690961	280FM	Bussmann	India	280A	690V	500V	85mm	55000	Each	1
690988	315FM	Bussmann	India	315A	690V	500V	85mm	77000	Each	1





2NZ01



4NZ01



25NZ02



35NZ02

**NEOZED DO HRC FUSELINKS (CLASS gG) TO AS/NZS 60269**

Part Number	Description	Brand	Origin	Amps	Volts	Length	Width	Unit	Box Qty
<b>Neozed D01 Bottle Fuses</b>									
687855	2NZ01	Bussmann	India	2A	440V	36mm	11mm	Each	10
687863	4NZ01	Bussmann	India	4A	440V	36mm	11mm	Each	10
687820	6NZ01	Bussmann	India	6A	440V	36mm	11mm	Each	10
687839	10NZ01	Bussmann	India	10A	440V	36mm	11mm	Each	10
687847	16NZ01	Bussmann	India	16A	440V	36mm	11mm	Each	10
<b>Neozed D02 Bottle Fuses</b>									
687901	20NZ02	Bussmann	India	20A	440V	36mm	15mm	Each	10
687928	25NZ02	Bussmann	India	25A	440V	36mm	15mm	Each	10
687936	35NZ02	Bussmann	India	35A	440V	36mm	15mm	Each	10
687944	50NZ02	Bussmann	India	50A	440V	36mm	15mm	Each	10
687952	63NZ02	Bussmann	India	63A	440V	36mm	15mm	Each	10

## BUSSMANN Diazed D16/D27 Bottle Fuses



6D16



25D16



4D27



25D27

### DIAZED ND HRC FUSELINKS (CLASS gG) TO AS/NZS 60269

Part Number	Description	Brand	Origin	Amps	Volts	Length	Width	Nib Diameter	Unit	Box Qty
<b>Diazed D16 Bottle Fuses</b>										
690597	2D16	Bussmann	India	2A	500V	50mm	13.2mm	6mm	Each	5
690600	4D16	Bussmann	India	4A	500V	50mm	13.2mm	6mm	Each	5
690619	6D16	Bussmann	India	6A	500V	50mm	13.2mm	6mm	Each	5
690627	10D16	Bussmann	India	10A	500V	50mm	13.2mm	8mm	Each	5
690635	16D16	Bussmann	India	16A	500V	50mm	13.2mm	10mm	Each	5
690643	20D16	Bussmann	India	20A	500V	50mm	13.2mm	12mm	Each	5
690651	25D16	Bussmann	India	25A	500V	50mm	13.2mm	14mm	Each	5
<b>Diazed D27 Bottle Fuses</b>										
688657	2D27	Bussmann	India	2A	500V	50mm	21.5mm	6mm	Each	5
688665	4D27	Bussmann	India	4A	500V	50mm	21.5mm	6mm	Each	5
688673	6D27	Bussmann	India	6A	500V	50mm	21.5mm	6mm	Each	5
688681	10D27	Bussmann	India	10A	500V	50mm	21.5mm	8mm	Each	5
688703	16D27	Bussmann	India	16A	500V	50mm	21.5mm	10mm	Each	5
688711	20D27	Bussmann	India	20A	500V	50mm	21.5mm	12mm	Each	5
688738	25D27	Bussmann	India	25A	500V	50mm	21.5mm	14mm	Each	5



12kV MV Air

## WEATHER-SEALED MV HRC FUSELINKS FOR USE IN AIR

Part Number	Description	Brand	Origin	Amps	Volts	Break Capacity	Dimensions	Configuration	Unit	Box Qty
<b>MV 12kV Fuselinks for use in Air*</b>										
671142	6.3A Air (12BDGHA6.3)	Bussmann	India	6.3A	12kV	40kA	359Lx51Dmm	Ferrule	Each	3
670154	10A Air (12BDGHA10)	Bussmann	India	10A	12kV	40kA	359Lx51Dmm	Ferrule	Each	3
671150	16A Air (12BDGHA16)	Bussmann	India	16A	12kV	40kA	359Lx51Dmm	Ferrule	Each	3
671169	20A Air (12BDGHA20)	Bussmann	India	20A	12kV	40kA	359Lx51Dmm	Ferrule	Each	3
671371	25A Air (12BDGHA25)	Bussmann	India	25A	12kV	40kA	359Lx51Dmm	Ferrule	Each	3
670375	31.5A Air (12BDGHA31.5)	Bussmann	India	31.5A	12kV	40kA	359Lx51Dmm	Ferrule	Each	3
671177	40A Air (12BDGHA40)	Bussmann	India	40A	12kV	40kA	359Lx51Dmm	Ferrule	Each	3
671185	50A Air (12BDGHA50)	Bussmann	India	50A	12kV	40kA	359Lx51Dmm	Ferrule	Each	3
671398	56A Air (12BFGHA56)	Bussmann	India	56A	12kV	40kA	359Lx76Dmm	Ferrule	Each	3
671401	63A Air (12BFGHA63)	Bussmann	India	63A	12kV	40kA	359Lx76Dmm	Ferrule	Each	3
671193	80A Air (12BFGHA80)	Bussmann	India	80A	12kV	40kA	359Lx76Dmm	Ferrule	Each	3
670685	90A Air (12BFGHA90)	Bussmann	India	90A	12kV	40kA	359Lx76Dmm	Ferrule	Each	3
671207	100A Air (12BFGHA100)	Bussmann	India	100A	12kV	40kA	359Lx76Dmm	Ferrule	Each	3
671215	125A Air (12AKGHA125)	Bussmann	India	125A	12kV	40kA	359Lx76Dmm	Ferrule	Each	3

Fuses on this page comply to BS 2692-1 Standard



12kV MV Oil

## MV HRC FUSELINKS FOR USE IN OIL SWITCHGEAR

Part Number	Description	Brand	Origin	Amps	Volts	Break Capacity	Dimensions	Configuration	Unit	Box Qty
<b>MV 12kV Fuselinks for use in Oil</b>										
670251	6.3A Oil (120EFMA6.3)	Busmann	India	6.3A	12kV	40kA	254Lx63.5Dmm	Ferrule	Each	3
670243	10A Oil (120EFMA10)	Busmann	India	10A	12kV	40kA	254Lx63.5Dmm	Ferrule	Each	3
670278	16A Oil (120EFMA16)	Busmann	India	16A	12kV	40kA	254Lx63.5Dmm	Ferrule	Each	3
670286	20A Oil (120EFMA20)	Busmann	India	20A	12kV	40kA	254Lx63.5Dmm	Ferrule	Each	3
670065	25A Oil (120EFMA25)	Busmann	India	25A	12kV	40kA	254Lx63.5Dmm	Ferrule	Each	3
670073	31.5A Oil (120EFMA31.5)	Busmann	India	31.5A	12kV	40kA	254Lx63.5Dmm	Ferrule	Each	3
670081	40A Oil (120EFMA40)	Busmann	India	40A	12kV	40kA	254Lx63.5Dmm	Ferrule	Each	3
670006	50A Oil (120EFMA50)	Busmann	India	50A	12kV	40kA	254Lx63.5Dmm	Ferrule	Each	3
670014	63A Oil (120EFMA63)	Busmann	India	63A	12kV	40kA	254Lx63.5Dmm	Ferrule	Each	3
670111	71A Oil (120HFMA71)	Busmann	India	71A	12kV	40kA	254Lx63.5Dmm	Ferrule	Each	3
670138	80A Oil (120HFMA80)	Busmann	India	80A	12kV	40kA	254Lx63.5Dmm	Ferrule	Each	3
671118	90A Oil (120HFMA90)	Busmann	India	90A	12kV	40kA	254Lx63.5Dmm	Ferrule	Each	3
670537	100A Oil (120HFMA100)	Busmann	India	100A	12kV	40kA	254Lx63.5Dmm	Ferrule	Each	3
671126	125A Oil (120LGMA125)	Busmann	India	125A	12kV	40kA	359Lx63.5Dmm	Ferrule	Each	3
671134	160A Oil (120LGMA160)	Busmann	India	160A	12kV	40kA	359Lx63.5Dmm	Ferrule	Each	3

Fuses on this page comply to IEC 60282-1 &amp; BS 2692-1 Standards



12kV MV Back Up

**WEATHER-SEALED MV HRC BACK UP FUSELINKS**

Part Number	Description	Brand	Origin	Amps	Volts	Break Capacity	Dimensions	Configuration	Unit	Box Qty
<b>MV 12kV Fuselinks – Back Up</b>										
671223	6.3A Back Up (12TDLEJ6.3)	Bussmann	India	6.3A	12kV	63kA	292Lx51Dmm	Ferrule	Each	3
671231	10A Back Up (12TDLEJ10)	Bussmann	India	10A	12kV	63kA	292Lx51Dmm	Ferrule	Each	3
671258	16A Back Up (12TDLEJ16)	Bussmann	India	16A	12kV	63kA	292Lx51Dmm	Ferrule	Each	3
671266	20A Back Up (12TDLEJ20)	Bussmann	India	20A	12kV	63kA	292Lx51Dmm	Ferrule	Each	3
671274	25A Back Up (12TDLEJ25)	Bussmann	India	25A	12kV	63kA	292Lx51Dmm	Ferrule	Each	3
671282	31.5A Back Up (12TDLEJ31.5)	Bussmann	India	31.5A	12kV	63kA	292Lx51Dmm	Ferrule	Each	3
671290	40A Back Up (12TDLEJ40)	Bussmann	India	40A	12kV	63kA	292Lx51Dmm	Ferrule	Each	3
671304	50A Back Up (12TDLEJ50)	Bussmann	India	50A	12kV	63kA	292Lx51Dmm	Ferrule	Each	3
671312	63A Back Up (12TDLEJ63)	Bussmann	India	63A	12kV	63kA	292Lx51Dmm	Ferrule	Each	3
671320	80A Back Up (12THLEJ80)	Bussmann	India	80A	12kV	63kA	292Lx67Dmm	Ferrule	Each	3
671339	100A Back Up (12THLEJ100)	Bussmann	India	100A	12kV	63kA	292Lx67Dmm	Ferrule	Each	3
671347	125A Back Up (12TKLEJ125)	Bussmann	India	125A	12kV	63kA	292Lx76Dmm	Ferrule	Each	3
671355	160A Back Up (12TXLEJ160)	Bussmann	India	160A	12kV	63kA	292Lx88Dmm	Ferrule	Each	3
671363	200A Back Up (12TXLEJ200)	Bussmann	India	200A	12kV	63kA	292Lx88Dmm	Ferrule	Each	3

Fuses on this page comply to IEC 60282-4 & DIN 43265 Standards

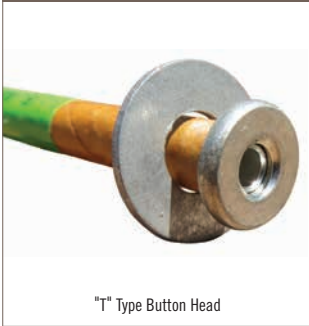


12kV MV Full Range

## MV HRC FULL RANGE FUSELINKS

Part Number	Description	Brand	Origin	Amps	Volts	Break Capacity	Dimensions	Configuration	Unit	Box Qty
<b>MV 12kV Fuselinks – Full Range</b>										
670545	6.3A Full Range (12FDLSJ6.3)	Bussmann	UK	6.3A	12kV	50kA	292Lx51Dmm	Ferrule	Each	3
670553	10A Full Range (12FDLSJ10)	Bussmann	UK	10A	12kV	50kA	292Lx51Dmm	Ferrule	Each	3
670642	16A Full Range (12FDLSJ16)	Bussmann	UK	16A	12kV	50kA	292Lx51Dmm	Ferrule	Each	3
670502	20A Full Range (12FDLSJ20)	Bussmann	UK	20A	12kV	50kA	292Lx51Dmm	Ferrule	Each	3
671010	25A Full Range (12FDLSJ25)	Bussmann	UK	25A	12kV	50kA	292Lx51Dmm	Ferrule	Each	3
670499	31.5A Full Range (12FDLSJ31.5)	Bussmann	UK	31.5A	12kV	50kA	292Lx51Dmm	Ferrule	Each	3
670030	40A Full Range (12FFLSJ40)	Bussmann	UK	40A	12kV	50kA	292Lx76Dmm	Ferrule	Each	3
670510	50A Full Range (12FFLSJ350)	Bussmann	UK	50A	12kV	50kA	292Lx76Dmm	Ferrule	Each	3
670049	63A Full Range (12FFLSJ63)	Bussmann	UK	63A	12kV	50kA	292Lx76Dmm	Ferrule	Each	3
670057	80A Full Range (12FXLSJ80)	Bussmann	UK	80A	12kV	50kA	292Lx88Dmm	Ferrule	Each	3
670529	100A Full Range (12FXLSJ100)	Bussmann	UK	100A	12kV	50kA	292Lx88Dmm	Ferrule	Each	3

Fuses on this page comply to IEC 60282-4 &amp; DIN 43265 Standards



"T" Type Button Head



"T" Type Universal



"K" Type Button Head

## EXPULSION FUSES

Part Number	Description	Brand	Origin	Amps	Volts	Configuration	Standard	Unit	Box Qty
<b>Type K Expulsion Fuselinks</b>									
673005	15KB2	Bussmann	India	2A	15kV	Button Head	ANSI C37-42	Each	25
673013	15KB3	Bussmann	India	3A	15kV	Button Head	ANSI C37-42	Each	25
673021	15KB5	Bussmann	India	5A	15kV	Button Head	ANSI C37-42	Each	25
673048	15KB6	Bussmann	India	6A	15kV	Button Head	ANSI C37-42	Each	25
673056	15KB10	Bussmann	India	10A	15kV	Button Head	ANSI C37-42	Each	25
673064	15KB20	Bussmann	India	20A	15kV	Button Head	ANSI C37-42	Each	25
<b>Type T Expulsion Fuselinks</b>									
673218	15TU2	Bussmann	India	2A	15kV	Universal	ANSI C37-42	Each	25
673226	15TU3	Bussmann	India	3A	15kV	Universal	ANSI C37-42	Each	25
673242	15TU6	Bussmann	India	6A	15kV	Universal	ANSI C37-42	Each	25
673293	15TU8	Bussmann	India	8A	15kV	Universal	ANSI C37-42	Each	25
673250	15TU10	Bussmann	India	10A	15kV	Universal	ANSI C37-42	Each	25
673404	15TU15	Bussmann	India	15A	15kV	Universal	ANSI C37-42	Each	25
673269	15TU20	Bussmann	India	20A	15kV	Universal	ANSI C37-42	Each	25
673412	15TU25	Bussmann	India	25A	15kV	Universal	ANSI C37-42	Each	25
673420	15TU30	Bussmann	India	30A	15kV	Universal	ANSI C37-42	Each	25
673439	15TU40	Bussmann	India	40A	15kV	Universal	ANSI C37-42	Each	25
673447	15TU50	Bussmann	India	50A	15kV	Universal	ANSI C37-42	Each	25
673455	15TU65	Bussmann	India	65A	15kV	Universal	ANSI C37-42	Each	10
673463	15TU80	Bussmann	India	80A	15kV	Universal	ANSI C37-42	Each	10
673471	15TU100	Bussmann	India	100A	15kV	Universal	ANSI C37-42	Each	10
671096	15TB5	Bussmann	India	5A	15kV	Button Head	ANSI C37-42	Each	25
670596	15TB100	Bussmann	India	100A	15kV	Button Head	ANSI C37-42	Each	10



M8 DMC Standoffs



M10 DMC Standoffs

### DMC STANDOFFS WITH STEEL INSERTS (IEC 60660)

Part Number	Description	Brand	Origin	Rating	Inserts	Height	Colour	Construction	Colour	Unit	Weight	Box Qty
<b>M8 DMC Standoffs</b>												
515191	NZI 6/35/M8 DMC Standoff	NZI	NZ	1.5kV	M8	35mm	Grey	DMC & Zinc-Plated Steel	Grey	Each	95g	12
515221	NZI 6/38/M8 DMC Standoff	NZI	NZ	1.5kV	M8	38mm	Grey	DMC & Zinc-Plated Steel	Grey	Each	110g	12
515264	NZI 6/45/M8 DMC Standoff	NZI	NZ	1.5kV	M8	45mm	Grey	DMC & Zinc-Plated Steel	Grey	Each	135g	12
514705	NZI 6/50/M8 DMC Standoff	NZI	NZ	1.5kV	M8	50mm	Grey	DMC & Zinc-Plated Steel	Grey	Each	155g	12
<b>M10 DMC Standoffs</b>												
515299	NZI 6/35/M10 DMC Standoff	NZI	NZ	1.5kV	M10	35mm	Grey	DMC & Zinc-Plated Steel	Grey	Each	90g	12
515329	NZI 6/38/M10 DMC Standoff	NZI	NZ	1.5kV	M10	38mm	Grey	DMC & Zinc-Plated Steel	Grey	Each	105g	12
515353	NZI 6/45/M10 DMC Standoff	NZI	NZ	1.5kV	M10	45mm	Grey	DMC & Zinc-Plated Steel	Grey	Each	130g	12
514772	NZI 6/50/M10 DMC Standoff	NZI	NZ	1.5kV	M10	50mm	Grey	DMC & Zinc-Plated Steel	Grey	Each	150g	12





M6 Busbar Support



M8 Busbar Support



M10 Busbar Support



M12 Busbar Support

**PORCELAIN BUSBAR SUPPORTS - COMPLETE WITH BOLT (IEC 60273)**

Part Number	Description	Brand	Origin	Rating	Bolt	Material	Glaze	Unit	Weight	Box Qty
<b>3kV Busbar Supports</b>										
186104	NZI M6 Busbar Support	NZI	NZ	3kV	1/4" M6	Porcelain & Z/plated Steel	White	Each	171g	6
185043	NZI M8 Busbar Support	NZI	NZ	3kV	5/16" M8	Porcelain & Z/plated Steel	White	Each	185g	6
186112	NZI M10 Busbar Support	NZI	NZ	3kV	3/8" M10	Porcelain & Z/plated Steel	White	Each	215g	6
186120	NZI M12 Busbar Support	NZI	NZ	3kV	1/2" M12	Porcelain & Z/plated Steel	White	Each	330g	6



1004



3004 Side View



2005CFH



1005 &amp; 2005



3005



2004

## 1/2/3 WAY PORCELAIN CONNECTORS (AS/NZS 60998)

Part Number	Description	Brand	Origin	Voltage	Rating	Fixing Hole	Glaze	Unit	Weight	Box Qty
<b>15A Connectors</b>										
184012	NZI 1004 1-Way Connector	NZI	NZ	500V	15A	No Fixing Hole	Unglazed	Each	9g	28
184047	NZI 2004 2-Way Connector	NZI	NZ	500V	15A	No Fixing Hole	Clear	Each	16g	18
184063	NZI 2004CFH 2-Way Connector	NZI	NZ	500V	15A	Centre Fixing Hole	Clear	Each	21g	12
184098	NZI 3004 3-Way Connector	NZI	NZ	500V	15A	No Fixing Hole	Clear	Each	23g	12
184128	NZI 3004CFH 3-Way Connector	NZI	NZ	500V	15A	Centre Fixing Hole	Clear	Each	30g	9
<b>30A Connectors</b>										
184144	NZI 1005 1-Way Connector	NZI	NZ	500V	30A	No Fixing Hole	Clear	Each	32g	14
184179	NZI 2005 2-Way Connector	NZI	NZ	500V	30A	No Fixing Hole	Clear	Each	33g	8
184195	NZI 2005CFH 2-Way Connector	NZI	NZ	500V	30A	Centre Fixing Hole	Clear	Each	52g	6
184217	NZI 3005 3-Way Connector	NZI	NZ	500V	30A	No Fixing Hole	Clear	Each	57g	6
184233	NZI 3005CFH 3-Way Connector	NZI	NZ	500V	30A	Centre Fixing Hole	Clear	Each	77g	4
<b>60A Connectors</b>										
184276	NZI 2006CFH 2-Way Connector	NZI	NZ	500V	60A	Centre Fixing Hole	Clear	Each	105g	1
184284	NZI 3006CFH 3-Way Connector	NZI	NZ	500V	60A	Centre Fixing Hole	Clear	Each	150g	1

 BC 960	 BC 961	 GES 926
 ES 971	 ES 975	 GES 926-1 (74mm height)
 ES 970	 ES T10	 GES 926-3 (64mm height)

**'R' RESTRICTED MOUNTING LAMP HOLDERS (ES/GES to AS/NZS 60998, BC to AS 3117)**

Part Number	Description	Brand	Origin	Voltage	Rating	Mounting	Shrouding	Glaze	Unit	Weight	Box Qty
<b>Bayonet Cap Lampholders (max 250V)</b>											
164046	NZI BC 960 Lampholder	NZI	NZ	240V	5A	External Side	Unshrouded	Clear	Each	70g	8
164054	NZI BC 961 Lampholder	NZI	NZ	240V	5A	Ext Back (2-Pin Batten)	Unshrouded	Clear	Each	60g	8
<b>Edison Screw Lampholders (max 250V)</b>											
164194	NZI ES 971 Lampholder	NZI	NZ	240V	5A	External Back	Unshrouded	Clear	Each	85g	8
164216	NZI ES 975 Lampholder	NZI	NZ	240V	5A	Internal Back	Unshrouded	Clear	Each	70g	8
166316	NZI ES 970 Lampholder	NZI	NZ	240V	5A	External Side	Unshrouded	Clear	Each	105g	8
164275	NZI ES T10 Lampholder	NZI	NZ	240V	5A	External Back (HD)	Unshrouded	Clear	Each	75g	8
<b>Giant Edison Screw Lampholders</b>											
164011	NZI GES 926 Lampholder	NZI	NZ	650V	15A	Internal Back	Shrouded	White	Each	260g	6
164038	NZI GES 926-1 Lampholder	NZI	NZ	650V	15A	Internal Back	Unshrouded	White	Each	245g	6
164380	NZI GES 926-3 Lampholder	NZI	NZ	650V	15A	Internal Back	Unshrouded	White	Each	225g	6



New Charcoal NZI Flame-Retardant MCB Safety Bases



Polyester Butylene Terephalate



Made in New Zealand

## UNIVERSAL PLASTIC MCB SAFETY BASES (AS/NZS 3121)

Part Number	Description	Brand	Origin	Voltage	Rating	Material	Colour	Unit	Weight	Box Qty
<b>Back Entry Safety Base</b>										
631779*	NZI Back Entry Plastic Safety Base	NZI	NZ	240V	6-40A	Glass-Reinforced Polyester Resin	Charcoal	Each	26g	36
<b>End Entry Safety Base</b>										
631809*	NZI End Entry Plastic Safety Base	NZI	NZ	240V	6-40A	Glass-Reinforced Polyester Resin	Charcoal	Each	24g	36

\* Limited stock available.



## Motor Circuit Protection Chart

AS 2005,BS88 and IEC 60269

AS NZS 60269

Power (KW)	Horse Power (HP)	Current F.L.C. (AMPS)	Direct On Line		Assisted Start Fuse
			Normal Fuse	Motor Fuse	
0.75	1.0	1.9	6	–	4
1.1	1.5	2.5	10	–	6
1.5	2.0	3.5	16	–	10
2.2	3.0	5.0	20	–	10
3.0	4.0	6.5	20	–	16
4.0	5.5	8.0	25	20M25 G06	16
5.5	7.5	11	32	20M32 G06	20
7.5	10	14	40	32M40 G06	20
11	15	21	50	32M50 H07	25
15	20	28	63	32M63 H07	40
18.5	25	35	80	63M80 K07	40
22	30	40	80	63M100 K07	50
30	40	55	100	63M100 K07	63
37	50	66	125	100M125 L09	80
45	60	80	160	100M160 L09	100
55	75	102	200	–	125
75	100	135	250	200M250 M09	160
90	120	165	250	200M250 M14	200
110	150	200	350	315M400 N09	200
132	180	230	355	–	250
150	200	260	400	–	315
160	220	280	400	–	315
185	250	325	450	400M500 P09	355
200	270	350	500	400M500 P11	400
220	300	385	560	–	450
250	340	450	560	–	450
315	430	545	670	–	560

D.O.L. based on 7 x motor F.L.C. for 10 seconds  
Assisted start based on 3.5 x motor F.L.C. for 20 seconds

# HRC Fuselinks COMPATIBILITY CHART

Certified to BS88 Parts 1 + 2 + 6 (G06 only), IEC 60269-1, Rated Breaking Capacity 80kA

NZI	Bussmann	BS88 Ref	Rating (amps)	Fixing Centres	Compatible With		
G06	NSD		2-20	Staggered	NS	SN2	FE01
G06			25-32	Staggered	NS	SN2	NS
NITD	NITD	A1	2-32	44.5mm	NIT	SA2	NIT
H07	AAO	A2	2-32	73.5mm	TIA	SB2	TIA
K07	BAO	A3	40-63	73mm	TIS	SB4	TIS
K07R	OSD		80-100	73mm			
AD/BD	AD		2-63	111mm	TBC	SF4	TBC
L09	CD	B1	80-100	111mm	TC	SF5	TC
M09	DD	B2	125-200	111mm	TF	SF6	TF
N09	ED	B3	250-315	111mm	TKF	SF7	TKF
L14	CEO		32-100	94mm	TCP	SD5	TCP
M14	DEO		125-200	94mm	TFP	SD6	TFP
N11	EFS		250	133mm	TKM	SG7	TKM
N11	EFS		315	133-184mm	TKM	SG7	TKM
P09	ED	B4	350-400	111mm	TMF	SF8	TMF
P11	EF	C1	350-400	133-184mm	TM	SH8	TM
P12			350-400	165-228mm	TMT	TMT8	TMT
R11	FF		450-630	133-184mm	TTM	SH9	TTM
R12	FG		450-630	165-228mm	TT	TT9	TT
S11	GF	C3	700-800	133-184mm	TLM	SH10	
S12	GG		700-800	165-228mm	TLT	TLT10	TLT
U44			1000-1250	149mm	TXU	SJ11	TXU

**NEW ZEALAND INSULATORS LIMITED**

Established 1924

**NZI Customer Service**

Phone +64-3-6878100, Fax +64-3-6158125

Office Hours 7.30am – 5.00pm (weekdays NZ Time)

Email [sales@nzinsulators.co.nz](mailto:sales@nzinsulators.co.nz)**NZI Temuka Factory, HQ & South Island Warehouse**

Thomas Street, PO Box 5, Temuka 7948

Phone +64-3-6878100

**NZI Auckland Branch & North Island Warehouse**

11 Wookey Lane, Kumeu 0891

Phone +64-9-4125941

**NZI Brands** NZI, Temuka Pottery, AX**Exclusive Distribution in NZ** DTR, Payer, GIG, NGK Stanger, Fulton, Efen**Shared Distribution in NZ** Avon, Cooper Bussmann, Red Spot**Websites** [nzinsulators.co.nz](http://nzinsulators.co.nz) & [temukapottery.co.nz](http://temukapottery.co.nz)**Timing**

This catalogue was released 14/1/14, all product changes are effective from that date.

**Freight & Order Size**

There is no minimum order. All orders exceeding NZ\$1,000 excl GST are freight free New Zealand wide. Orders under \$1,000 are warmly welcomed, but we ask for a freight cost contribution, as per the most recent NZI Freight Rate Card – which is posted & updated on the home page of [nzinsulators.co.nz](http://nzinsulators.co.nz). We do ask that whenever possible, orders be made in full-box multiples.

**Wholesalers**

Wholesalers can buy direct from NZI at Trade Price less a discount. The 2014 LV Pocket Book lists Trade Prices as they stood at 11/11/13. The freight-free threshold for Wholesalers (buying off Trade Price) is NZ\$300 excl GST. Wholesalers who also operate a Network Store need two NZI accounts.

**Terms of Trade**

Transactions with New Zealand Insulators are made under overarching 'terms of trade' which can be downloaded from the home page of [nzinsulators.co.nz](http://nzinsulators.co.nz).

**Copyright**

This catalogue, our coding, product images and the brands NZI, Temuka Pottery & AX are the intellectual property of New Zealand Insulators Limited.

Thank you for supporting NZI's Temuka factory.

To retain our vital (local) manufacturing capability, please specify New Zealand Insulators brand.



**AX**



GLOBAL INSULATOR GROUP



**Bussmann**  
by E.T.M.



NEW ZEALAND INSULATORS



TEMUKA

NZI CUSTOMER SERVICES  
7.30AM – 5.00PM WEEKDAYS  
T +64-3-6878100  
F +64-3-6158125  
E sales@nzinsulators.co.nz

HQ & FACTORY  
THOMAS STREET  
PO BOX 5 TEMUKA 7948

AUCKLAND BRANCH  
11 WOOKEY LANE  
KUMEU 0810

W nzinsulators.co.nz

