



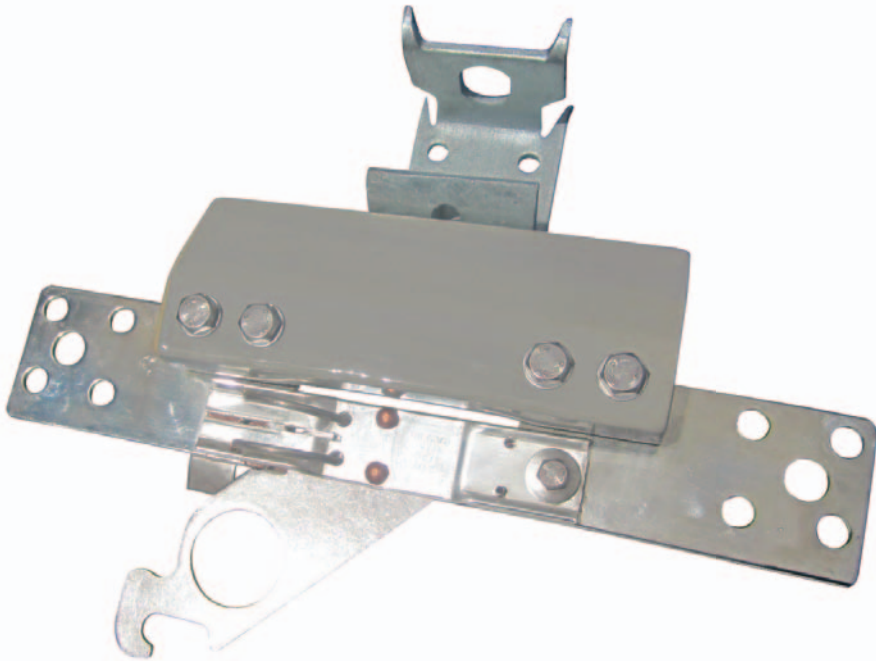
LVI Bottom View



LVI Top View



LVI End View



NGK Stanger LVI (3/box)

SOLID LINK LVI & FUSED LINK LVFI ISOLATORS

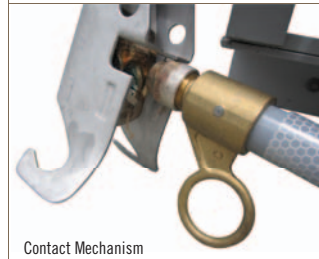
Part Number	Description	Brand	Origin	Rated Current	Contacts	Standard	Weight	Box/ Pallet	Drawing
Single Solid Link LVI									
258377	NGK-S Low Voltage Isolator	NGK-S	Australia	480V	630A	Silver M12 AS175-1975	2.5kg	3	NZ4284
Single Fused Link LVFI									
258385	NGK-S Low Voltage Fused Isolator	NGK-S	Australia	480V	630A	Silver M12 AS175-1975	3.3kg	3	NZ4286



12-24kV 150BIL EDO (100A)



Hinge



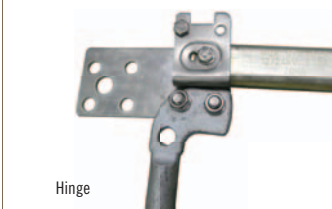
Contact Mechanism

100A PORCELAIN EDO C-TYPE DROPOUT SWITCHES

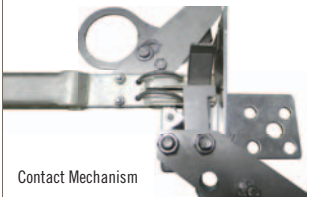
Part Number	Description	Brand Origin	BIL	Current	Creepage	Breaking	Colour	Standard	Weight	Box/ Pallet	Drawing
150BIL EDO with Fuse Tube											
539023	NGK-S 12/24kV Porcelain EDO	NGK-S Australia	150kV	100A	475mm	8kA@ 12kV	Grey	AS/NZS 1033.1	12.8kg	1/49	72298/15
170BIL EDO with Fuse Tube											
539031	NGK-S 24/36kV Porcelain EDO	NGK-S Australia	170kV	100A	600mm	6kA@ 24kV	Grey	AS/NZS 1033.1	13.3kg	1/28	72299/ 27NORQEB
EDO Optional Accessories											
	NGK-S EDO Earthing Stirrup	NGK-S Australia									70450/6
	NGK-S EDO Fire Prevention Device	NGK-S Australia									72835
	NGK-S EDO Birdproof Cover	NGK-S Australia									72905



Made in Australia



Hinge



Contact Mechanism



12-14kV 150BIL HVI (630A)

630A PORCELAIN HVI C-TYPE SOLID LINKS

Part Number	Description	Brand	Origin	BIL	Current	Creepage S/T	Current	Colour	Standard	Weight	Box/ Pallet	Drawing
125BIL HVI												
253464	NGK-S 12kV Single Pole HVI	NGK-S	Australia	125kV	630A	300mm	20kA at 1sec	Grey	AS/NZS 1025	9.0kg	1/28	70416
253014	NGK-S 12/24kV Single Pole HVI	NGK-S	Australia	125kV	630A	300mm	20kA at 1sec	Grey	AS/NZS 1025	9.0kg	1/28	70416/NSW
150BIL HVI												
539058	NGK-S 12/24kV Single Pole HVI	NGK-S	Australia	150kV	630A	475mm	20kA at 1sec	Grey	AS/NZS 1306	10.5kg	1/28	70414/NSW
170BIL HVI												
539228	NGK-S 24/36kV Single Pole HVI	NGK-S	Australia	170kV	630A	600mm	20kA at 1sec	Grey	AS/NZS 1306	12.0kg	1/28	70423/1
539007	NGK-S 24/36kV Single Pole HVI	NGK-S	Australia	170kV	630A	660mm	20kA at 1sec	Grey	AS/NZS 1306	12.0kg	1/28	70423/1EE
539236	NGK-S 24/36kV Single Pole HVI + Earth Stirrup	NGK-S	Australia	170kV	630A	600mm	20kA at 1sec	Grey	AS/NZS 1306	13.5kg	1/28	70423/2CE
Universal Mounting Brackets for NGK-S HVI												
253006	NGK-S HVI Mounting Bracket (Z)	NGK-S	Australia									69196
253472	NGK-S HVI Mounting Bracket (Y)	NGK-S	Australia									69194



NGK Stanger PR3

MANUAL PR3 AIR BREAK SWITCHES

Part Number	Description	Brand	Origin	Rating	Current	BIL	Rate S/T Current	Standard	Drawing
Manual Flicker Style Air Break Switches									
539139	NGK-S 12kV PR3 Vert/Hor ABS	NGK-S	Australia	12kV	630A	150kV	20kA at 1sec	AS/NZS ISO 9001:2008	69118
539147	NGK-S 24kV PR3 Vert/Hor ABS	NGK-S	Australia	24kV	630A	150kV	16kA at 1sec	AS/NZS ISO 9001:2008	69119
539155	NGK-S 36kV PR3 Vert/Hor ABS	NGK-S	Australia	36kV	630A	200kV	20kA at 1sec	AS/NZS ISO 9001:2008	69120
Optional Accessories for NGK-S ABS									
	NGK-S ABS Earth Switch (24&36kV only)	NGK-S	Australia						
	NGK-S ABS Dropout Fuse Mount	NGK-S	Australia						
	NGK-S ABS Crossarm	NGK-S	Australia						
	NGK-S ABS Operating Handle	NGK-S	Australia						
	NGK-S ABS Mounting Bracket Kit	NGK-S	Australia						
	NGK-S ABS Double Break Interrupter	NGK-S	Australia						
	NGK-S ABS ARCBREK 5 Interrupter	NGK-S	Australia						



Compact 12kV SF6 (NGK Stanger 91776)



Compact 24kV SF6

MANUAL SF6 LOAD BREAK GAS SWITCHES

Part Number	Description	Brand Origin	Rating Current	Making Current	Standard	Weight	Drawing
Manual SF6 Gas Switches							
539082	NGK-S 12kV SF6 Compact Gas Switch	NGK-S Australia	12kV 630A	41.6kA	AS/NZS ISO 9001:2008	75kg	91776
539090	NGK-S 24kV SF6 Compact Gas Switch	NGK-S Australia	24kV 630A	41.6kA	AS/NZS ISO 9001:2008	95kg	90030
539104	NGK-S 36kV SF6 Gas Switch	NGK-S Australia	36kV 630A	33kA	AS/NZS ISO 9001:2008	180kg	90036
Optional Accessories for all SF6							
	NGK-S SF6 Safety Locking Kit	NGK-S Australia					91777
Optional Accessories for 12&24kV SF6							
	NGK-S SF6 12/24 Crossarm	NGK-S Australia					91743
	NGK-S SF6 12/24 Surge Diverter Mounting Kit	NGK-S Australia					91806
	NGK-S SF6 12/24 Mid Pole Actuator Kit	NGK-S Australia					95110
Optional Accessories for 36kV SF6							
	NGK-S SF6 36 Crossarm	NGK-S Australia					90481
	NGK-S SF6 36 Pole Top Mounting Kit	NGK-S Australia					90498
	NGK-S SF6 36 Surge Diverter Mounting Kit	NGK-S Australia					95001



3 x FSD 401



FSD 401



FSD 401 Bracket

FSD400



FSD401

FSD THREE & SINGLE PHASE DIN FUSE DISCONNECTS (AS/NZS 3947-1)

Part Number	Description	Brand	Origin	Rated Amps	Fits	Terminations	Weight	Box Qty	Drawing
FSD 160A Disconnects									
539252	NGK-S FSD160 Single Phase	NGK-S	Australia	415V	160A	NH00 IPC/IPC 6-95mm ²	1.0kg	1	71932
539260	NGK-S Bracket for 3 x FSD160	NGK-S	Australia	415V			1.7kg	1	72485/2
FSD 250A Disconnects									
539279	NGK-S FSD250 Three Phase + Bracket	NGK-S	Australia	415V	250A	NH1&2 IPC/IPC 6-95mm ²	6.0kg	1	72477/1
FSD 400A Disconnects									
468908	NGK-S FSD400 Three Phase + Bracket	NGK-S	Australia	415V	400A	NH1&2 4.76mm T/Palms	6.0kg	1	71969/5
468916	NGK-S FSD401 Single Phase	NGK-S	Australia	415V	400A	NH1&2 4.76mm T/Palms	2.0kg	1	73401/5
469106	NGK-S Bracket for 3 x FSD401	NGK-S	Australia	415V			1.7kg	1	72923
FSD 630A Disconnect									
468819	NGK-S FSD631 Single Phase	NGK-S	Australia	415V	630A	NH2&3 6.35mm T/Palms	2.0kg	1	73631/5