



220



210



205



220 Top View



210 Top View



205 Top View



103 Spike



80 or 42 Reels Per Carton

LOW VOLTAGE PORCELAIN REELS & SPIKE

Part Number	Description	Brand	Origin	Groove	Design Loading	Rated	Colour	Fixing	Unit	Weight	Box Qty	Drawing
Reels												
109061	NZI 220 Reel	NZI	NZ	19mm	5.5kN	650V	Grey	17mm Diameter	Each	295g	80	S1332
109207	NZI 210 Reel	NZI	NZ	10mm	6kN	650V	Grey	17.5mm Diameter	Each	220g	80	S1331
109010	NZI 205 Reel	NZI	NZ	18mm	10kN	3.3kV	Grey	17.5mm Diameter	Each	540g	42	S1330
Spike												
100501	NZI 103 Spike	NZI	NZ	16mm Hole	4kN		Grey	Coach Screw	Each	325g	50	D267-0502



LOW VOLTAGE PORCELAIN INSULATORS

Part Number	Description	Brand	Origin	Groove	Top	Line Voltage	Colour	Thread	Unit	Weight	Box/Pallet	Drawing
LV Insulators												
102040	NZI 510 (Round Top)	NZI	NZ	26mm	Tie Top	0.4kV-3kV	Grey	5/8" Cordeau	Each	580g	30/1200	S1003
102067	NZI 511 (Square Top)	NZI	NZ	32mm	Tie Top	0.4kV-3kV	Grey	5/8" Cordeau	Each	600g	30/900	S1656
Part Number	Description	Brand	Origin	Length	Strength	Diameter	Head	Thread	Unit	Weight	Box Qty	Drawing
Spindle for 510/511												
540358	5/8 Cordeau Spindle	AX	China	118/127mm	3.3kN	Galv Steel	Steel	5/8" Cordeau	Each	485g	30	D374-2009
Part Number	Description	Brand	Origin			Detail	OD	Internal Diameter	Unit	Weight	Pack Qty	
Washer for 510/511												
540234	Leather Washer	AX	NZ			Oiled Leather	23mm	5/8" (15.9mm)	Each	0.1gm	90*	

* Washers – pack quantity previously 100, now 90

NZI 11kV PIN Insulators (Clamp Top)



1132T



Thread



6/Box



R23

11kV PORCELAIN PIN INSULATOR (CLAMP TOP)

Part Number	Description	Brand	Origin	Creepage	Top	Clamp	Colour	Thread	Unit	Weight	Box Qty	Drawing
11kV Pin Insulator												
104175	NZI 1132T	NZI	NZ	250mm	Clamp Top	SGI/Aluminium	Grey	BS Small Steel Head	Each	3.6kg	6	D351-0502
Part Number	Description	Brand	Origin	Length	Strength	Diameter	Head	Thread	Unit	Weight	Box Qty	Drawing
Spindle for 1132T												
540528	AX R23 Spindle	AX	UK	170/130mm	10kN	M18	Steel	BS Small Steel Head	Each	1.1kg	6	D374-2027



11kV PORCELAIN PIN INSULATORS (TIE TOP)

Part Number	Description	Brand	Origin	Creepage	Top	Groove	Colour	Thread	Unit	Weight	Box/Pallet	Drawing
11kV Pin Insulators												
103160	NZI 1130W (26mm Groove)	NZI	NZ	250mm	Tie Top	26mm	Grey	1 Inch SLHT	Each	1.5kg	12/288	M1022-14
104507	NZI 1130W (32mm Groove)	NZI	NZ	250mm	Tie Top	32mm	Grey	1 Inch SLHT	Each	1.5kg	12/288	M1022-17
103608	NZI 821*	NZI	NZ	185mm	Tie Top	23mm	Grey*	5/8" Cordeau	Each	930g	18	S1310
15kV Pin Insulator												
104574	NZI 1540W	NZI	NZ	300mm	Tie Top	32mm	Grey	1 & 3/8"	Each	2.0kg	6/144	S1071-24
Spindles for 1130W												
536164	AX Nema 1" Nylon Spindle	AX	China	152/140mm	6kN	M20	Nylon	1 Inch SLHT	Each	1.0kg	12	D374-2134
536326	AX Nema 1" Lead Spindle	AX	China	152/146mm	6kN	M20	Lead	1 Inch SLHT	Each	1.1kg	12	D374-2118
Spindle for 821												
540358	AX 141B 5/8 Cordeau Spindle	AX	China	118/127mm	3.3kN	M16	Steel	5/8" Cordeau	Each	485g	30	D374-2009
Spindle for 1540												
540455	AX 140B1 Spindle	AX	China	171/134mm	10kN	M20	Lead	1 & 3/8"	Each	1.6kg	12	D374-2008

* 821 = some brown still in stock, phased changeover to grey



11kV Clamp Top Line Post – includes Cable Clamp



Clamp



Clamp Side View



Cap, made in Auckland



Stud Hardware

11kV PORCELAIN LINE POST INSULATOR (CLAMP TOP)

Part Number	Description	Brand	Origin	Creepage	Top	Clamp	Strength	Colour	Unit	Weight	Box/ Pallet	Drawing
11kV Line Post												
464589	NZI 11kV Class 2 Line Post	NZI	NZ	320mm		Clamp Top	SGI/ Aluminium	10kN	Grey	Each	7.0kg	3/84 D724-0526





11kV Class 2

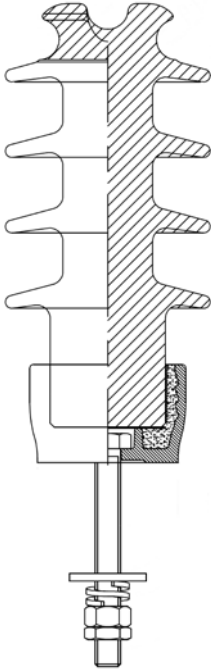
12kV Ultra Premium

1/Box (464314)

11kV PORCELAIN LINE POST INSULATORS (TIE TOP)

Part Number	Description	Brand	Origin	Creepage	Top	Groove	Strength	Colour	Unit	Weight	Box/Pallet	Drawing
11kV Line Post												
460818	NZI 11kV Class 2 Line Post	NZI	NZ	285mm	Tie Top	32mm	10kN	Grey	Each	4.9kg	3/144	D632-0551
12kV Ultra Premium Line Post												
464314	NZI 12kV Class 3 Line Post	NZI	NZ	420mm	Tie Top	32mm	17.5kN	Grey	Each	8.4kg	1/40	D632-0564

NZI 22kV LINE POST Insulators (Tie Top)

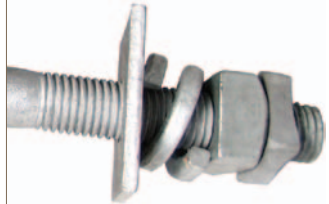


22kV Class 2 – March Release



22kV Ultra Premium

Groove



Stud Hardware



1/Box

22kV PORCELAIN LINE POST INSULATORS (TIE TOP)

Part Number	Description	Brand	Origin	Creepage	Top	Groove	Strength	Colour	Unit	Weight	Box/Pallet	Drawing
22kV Line Post*												
464619	NZI 22kV Class 2 Line Post*	NZI	NZ	490mm	Tie Top	32mm	10kN	Grey	Each	9.0kg	1/40	D632-0573
22kV Ultra Premium Line Post												
464368	NZI 22kV Class 4 Line Post	NZI	NZ	630mm	Tie Top	32mm	17.5kN	Grey	Each	12.4kg	1/40	D632-0563

* Planned release date – March 2012





ALP22/450



Groove



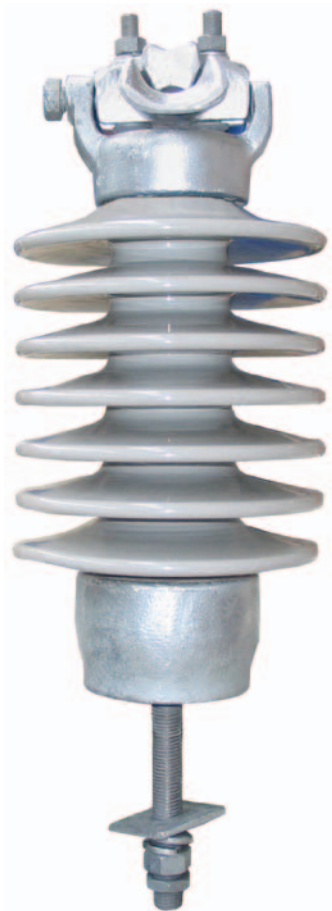
Thread



Pattern C

22kV PORCELAIN PIN INSULATOR (TIE TOP)

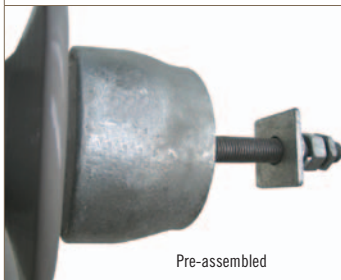
Part Number	Description	Brand	Origin	Creepage	Top	Groove	Colour	Thread	Unit	Weight	Box/Pallet	Drawing
22kV Pin Insulator												
106941	NZI ALP22/450	NZI	NZ	450mm	Tie Top	32mm	Grey	Pattern C	Each	3.6kg	6/120	S2466-1
Part Number	Description	Brand	Origin	Length	Strength	Diameter	Head	Thread	Unit	Weight	Box Qty	Drawing
Spindles for ALP22/450												
538213	AX M20 Pattern C Spindle (20mm)	AX	China	200/165mm	10kN	M20	Lead	Pattern C	Each	2.2kg	6	D374-2084
538205	AX M24 Pattern C Spindle (24mm)	AX	China	200/165mm	11kN	M24	Lead	Pattern C	Each	2.4kg	6	D374-2085



33kV Clamp Top Line Post – includes Cable Clamp



Clamp Components



Pre-assembled



1/Box

33kV PORCELAIN LINE POST INSULATOR (CLAMP TOP)

Part Number	Description	Brand	Origin	Creepage Top	Clamp	Strength	Colour	Unit	Weight	Box/Pallet	Drawing
	33kV Line Post										
464597	NZI 33kV Class 3 Line Post	NZI	NZ	1020mm	Clamp Top	SGI/ Aluminium	13kN	Grey	Each	15.5kg	1/30 D724-0524





33kV (32mm Groove)



33kV (40mm Groove)



36kV Ultra Premium



44/780*



32mm Groove



1/Box

33kV PORCELAIN LINE POST INSULATORS (TIE TOP)

Part Number	Description	Brand	Origin	Creepage	Top	Groove	Strength	Colour	Unit	Weight	Box/Pallet	Drawing
33kV Line Posts												
464570	NZI 33kV Class 3 32mm Groove	NZI	NZ	915mm	Tie Top	32mm	17.5kN	Grey	Each	15.4kg	1/40	D632-0570
464562	NZI 33kV Class 3 40mm Groove	NZI	NZ	915mm	Tie Top	40mm	17.5kN	Grey	Each	16.1kg	1/40	D632-0571
36kV Ultra Premium Line Post												
464376	NZI 36kV Class 4 Line Post	NZI	NZ	955mm	Tie Top	32mm	13kN	Grey	Each	17.4kg	1/40	D632-0562
44kV Line Post*												
461717	NZI 44kV 44/780 Class 2 Line Post*	NZI	NZ	780mm	Tie Top	38mm	10kN	Grey	Each	15.0kg	1/40	D632-0537

* End of Line = unlikely to be stocked beyond Dec 2012

NZI 33kV PIN Insulators (Clamp Top)



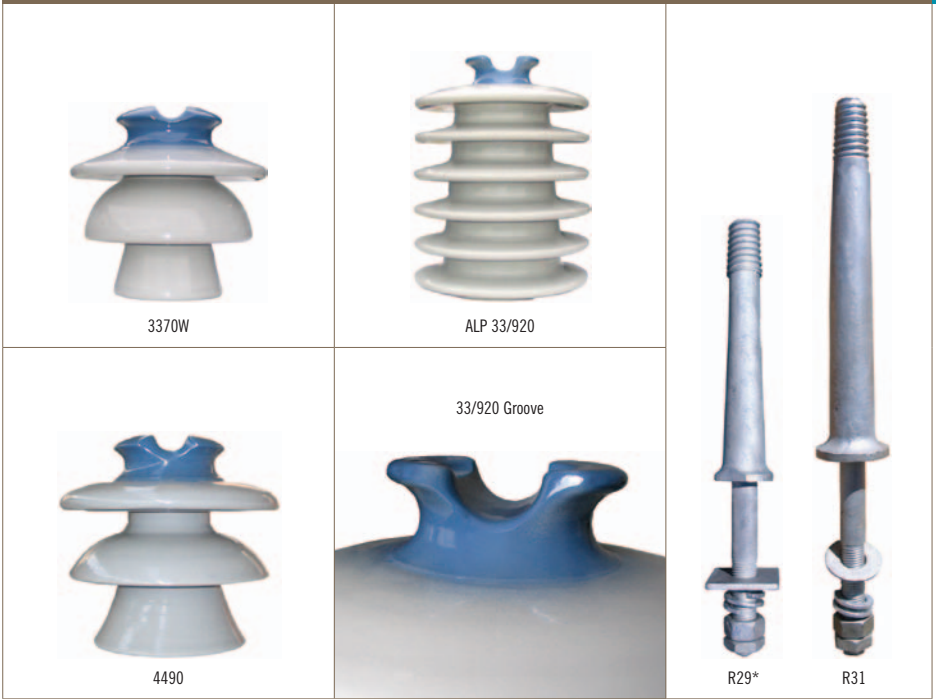
33kV PORCELAIN PIN INSULATORS (CLAMP TOP)

Part Number	Description	Brand	Origin	Creepage	Top	Clamp	Colour	Thread	Unit	Weight	Box/Pallet	Drawing
33kV Pin Insulator												
112550	NZI 3372	NZI	NZ	510mm	Clamp Top	SGI/ Aluminium	Grey	BS Large Steel Head	Each	8.2kg	1/32	D347-0504
44kV Pin Insulator												
111414	NZI 4492	NZI	NZ	635mm	Clamp Top	SGI/ Aluminium	Grey	BS Large Steel Head	Each	14.1kg	1/32	D341-0506

Part Number	Description	Brand	Origin	Length	Strength	Diameter	Head	Thread	Unit	Weight	Box Qty	Drawing
Spindle fits both Insulators												
540463	AX R31 Spindle	AX	China	305/178mm	10kN		Steel	BS Large Steel Head	Each	2.9kg	6	374-2023
Shorter Spindle for 3372 only*												
540706	AX R29 Spindle*	AX	UK	230/152mm	10kN		Steel	BS Large Steel Head	Each	1.9kg	6	374-2110

* End of Line = unlikely to be stocked beyond Dec 2012





33kV PORCELAIN PIN INSULATORS (TIE TOP)

Part Number	Description	Brand	Origin	Creepage	Top	Groove	Colour	Thread	Unit	Weight	Box/Pallet	Drawing
33kV Pin Insulators												
112526	NZI 3370W	NZI	NZ	500mm	Tie Top	32mm	Grey	BS Large Steel Head	Each	5.2kg	3/96	D327-0503
115029	NZI ALP33/920	NZI	NZ	920mm	Tie Top	32mm	Grey	BS Large Steel Head	Each	16.2kg	1/28	D718-0503
44kV Pin Insulators												
111376	NZI 4490	NZI	NZ	665mm	Tie Top	38mm	Grey	BS Large Steel Head	Each	9.5kg	3/45	D343-0504

Part Number	Description	Brand	Origin	Length	Strength	Diameter	Head	Thread	Unit	Weight	Box Qty	Drawing
Spindle fits all 3 Insulators												
540463	AX R31 Spindle	AX	China	305/178mm	10kN	M22	Steel	BS Large Steel Head	Each	2.9kg	6	374-2023
Shorter Spindle for 3370 only*												
540706	AX R29 Spindle*	AX	China	230/152mm	10kN	M22	Steel	BS Large Steel Head	Each	1.9kg	6	374-2110

* End of Line = unlikely to be stocked beyond Dec 2012





GY2 Guy Strain



GY3 Guy Strain



107 Fence Strainer



GY3 Side View



GY3 Top View

PORCELAIN GUYS STRAINS & FENCE STRAINER

Part Number	Description	Brand	Origin	Height	Wet Flashover	Strength	Colour	Unit	Weight	Box/Pallet	Drawing
GY2 Guy Strain											
108197	NZI GY2 15kV Guy Strain	NZI	NZ	146mm	15kV	71kN with 19/2 Staywire	Grey	Each	1.2kg	18/1152	S2289
GY3 Guy Strain											
108162	NZI GY3 20kV Guy Strain	NZI	NZ	216mm	20kV	222kN with 19/2.75 Staywire	Grey	Each	3.8kg	4/192	S2289
Fence Strainer											
108014	NZI 107 Fence Strainer	NZI	NZ	57mm	4kV		Clear Glaze	Each	135g	280	M1515



12-36kV PORCELAIN STANDOFF INSULATORS												
Part Number	Description	Brand	Origin	Creepage	Length	Colour	Strength	End Fittings	Unit	Weight	Box Qty	Drawing
599263	12kV T-Insert Standoff Insulator	NZI	NZ	480mm	235mm	Grey	3.5kN	T Insert	Each	6.0kg	6	D412-0504
598291	12kV Standoff Switch Insulator	NZI	NZ	445mm	235mm	Grey	4.0kN	Cemented Caps	Each	5.9kg	3	D412-0529
598305	22kV Standoff Switch Insulator	NZI	NZ	590mm	300mm	Grey	3.0kN	Cemented Caps	Each	5.8kg	3	D412-0531
598313	36kV Standoff Switch Insulator	NZI	NZ	880mm	406mm	Grey	2.0kN	Cemented Caps	Each	9.0kg	3	D412-0527



210 U-Shackle Bundle



205 U-Shackle Bundle



210 Shackle-Strap Bundle



205 Shackle-Strap Bundle



510 + Cordeau Spindle + Washer



1130W + Nema Nylon Spindle



Eye Bolt + 15kV Deadend + Aluminium Clevis



Eye Bolt + 15kV Deadend + Steel Clevis

REEL, 510/511, 1130 & 15KV DEADEND ASSEMBLED BUNDLES

Part Number	Description	Assembled?	Refer Pages	Unit	Weight	Box Qty
Reel & U-Shackle Bundles						
102121	NZI 210 Reel + Avon AA23001 Small U Shackle + M12 110 Bolt	Assembled	2, 19	Bundle	650g	20
102156	NZI 205 Reel + Avon AA23003 E/Large U Shackle + M12 110 Bolt	Assembled	2, 19	Bundle	1.3kg	10
Reel & Shackle Strap Bundles						
102148	NZI 210 Reel + 2 x Avon AA20001 7" Shackle Strap + 2 x M12 110 Bolt	Assembled	2, 19	Bundle	750g	20
102180	NZI 205 Reel + 2 x Avon AA20001 7" Shackle Strap + 2 x M12 110 Bolt	Assembled	2, 19	Bundle	1.1kg	10
LV Insulator & Spindle & Washer Bundles						
102164	NZI 510 Insulator + AX 5/8 Cordeau Spindle + AX Leather Washer	Assembled	3	Bundle	1.1kg	12
102172	NZI 511 Insulator + AX 5/8 Cordeau Spindle + AX Leather Washer	Assembled	3	Bundle	1.1kg	12
1130W 11kV Pin Insulator & Nema Nylon Spindle Bundles						
103837	NZI 1130W 26mm Insulator + AX Nema Nylon Spindle	Assembled	5	Bundle	2.5kg	6
103934	NZI 1130W 32mm Insulator + AX Nema Nylon Spindle	Assembled	5	Bundle	2.5kg	6
15kV Deadend Strain & Clevis Thimble & Eye Bolt Bundles						
553336	DTR 15kV Deadend + AX Aluminium Clevis + Avon M16 200 Eye Bolt	Assembled	19, 20, 21	Bundle	2.1kg	10
553344	DTR 15kV Deadend + AX Steel Clevis + Avon M16 200 Eye Bolt	Assembled	19, 20, 21	Bundle	2.3kg	10



1131



4494



4497



4494 Inverted



72.5kV

11-72.5kV PORCELAIN STATION POSTS

Part Number	Description	Brand	Origin	Creepage	Caps	Colour	Strength	Construction	Unit	Weight	Box/Pallet	Drawing
11kV Station Post Insulator												
104744	NZI 1131 11kV Station Post	NZI	NZ	265mm	76PCD	Grey	6kN	1 Piece	Each	4.4kg	6	D712-0501
36kV Station Post Insulators												
460001	NZI 4494 36kV Station Post	NZI	NZ	860mm	76PCD	Grey	12kN	1 Piece	Each	20.0kg	1/32	D687-0547
460028	NZI 4494 Inverted 36kV Station Post	NZI	NZ	860mm	76PCD	Grey	12kN	1 Piece	Each	20.0kg	1/32	D687-0593
44kV Station Post Insulator												
113514	NZI 4497 Heavy Duty 44kV Station Post	NZI	NZ	813mm	76PCD	Grey	11kN	Multi Shell	Each	16.0kg	1/27	D400-0502
72.5kV Station Post Insulator												
460990	NZI 72.5kV Station Post	NZI	NZ	1600mm	76PCD	Grey	8kN	1 Piece	Each	39.1kg	1	D687-0588



Lineguard



Lineguard



Mini Wedge*



Mini Wedge*

LINEGUARD DISCONNECTS & MINI WEDGE FUSEHOLDER

Part Number	Description	Brand	Origin	Amps	Colour	Detail	Complies With	Unit	Weight	Box Qty
Lineguard Disconnects										
468177	Lineguard 100A Ferrule Disconnect	NZI	NZ	100A	Black	Polyamide & Nickle-Plated NFM	IEC 60947	Each	545g	20
468185	Lineguard 160A NH00 Disconnect	NZI	NZ	160A	Black	Polyamide & Nickle-Plated NFM	IEC 60947	Each	505g	20
Porcelain Mini Wedge Fuseholder*										
468789	NZI Mini Wedge Offset Tag Carrier/Base Complete*	NZI	NZ	200A	Grey	Porcelain & ETPNFM	AS/NZS 3947	Each	3.0kg	5

* Mini Wedge – some brown still in stock, phased change to grey

NZI Pole Mounted CUTOUTS

REWIREABLE PORCELAIN POLE MOUNTED CUTOUTS*

Part Number	Description	Brand	Origin	Amps	Colour	Construction	Complies With	Unit	Weight	Box Qty
Rewireable Series – 30A*										
144029	NZI Rewireable Cutout 30A Complete	NZI	NZ	30A	Grey	Porcelain & ETPNFM	AS/NZS 3947	Each	690g	1
146137	NZI Rewireable Cutout 30A Complete (Wired)	NZI	NZ	30A	Grey	Porcelain & ETPNFM	AS/NZS 3948	Each	690g	1
144452	NZI Rewireable Cutout 30A Plug Only	NZI	NZ	30A	Grey	Porcelain & ETPNFM	AS/NZS 3949	Each	190g	54
144061	NZI Rewireable Cutout 30A Plug Only (Wired)	NZI	NZ	30A	Grey	Porcelain & ETPNFM	AS/NZS 3950	Each	190g	1
144495	NZI Rewireable Cutout 30A Base Only	NZI	NZ	30A	Grey	Porcelain & ETPNFM	AS/NZS 3951	Each	460g	1
Rewireable Series – 60A*										
144398	NZI Rewireable Cutout 60A Complete	NZI	NZ	60A	Grey	Porcelain & ETPNFM	AS/NZS 3954	Each	1.5kg	15
146110	NZI Rewireable Cutout 60A Complete (Wired)	NZI	NZ	60A	Grey	Porcelain & ETPNFM	AS/NZS 3955	Each	1.5kg	1
144444	NZI Rewireable Cutout 60A Plug Only	NZI	NZ	60A	Grey	Porcelain & ETPNFM	AS/NZS 3956	Each	380g	30
146129	NZI Rewireable Cutout 60A Plug Only (Wired)	NZI	NZ	60A	Grey	Porcelain & ETPNFM	AS/NZS 3957	Each	380g	1
144509	NZI Rewireable Cutout 60A Base Only	NZI	NZ	60A	Grey	Porcelain & ETPNFM	AS/NZS 3958	Each	1.1kg	15
Rewireable Series – 100A*										
144916	NZI Rewireable Cutout 100A Complete	NZI	NZ	100A	Grey	Porcelain & ETPNFM	AS/NZS 3961	Each	3.1kg	6
146145	NZI Rewireable Cutout 100A Complete (Wired)	NZI	NZ	100A	Grey	Porcelain & ETPNFM	AS/NZS 3962	Each	3.1kg	1
144959	NZI Rewireable Cutout 100A Plug Only	NZI	NZ	100A	Grey	Porcelain & ETPNFM	AS/NZS 3963	Each	720g	1
144703	NZI Rewireable Cutout 100A Plug Only (Wired)	NZI	NZ	100A	Grey	Porcelain & ETPNFM	AS/NZS 3964	Each	720g	1

* Rewireable – some brown still in stock, phased change to grey





30A HRC



60A HRC



HRC Cutout

HRC PORCELAIN POLE MOUNTED CUTOUTS*

Part Number	Description	Brand	Origin	Amps	Colour	Fuse Installed	Construction	Unit	Weight	Box Qty
HRC Series – 30A*										
144037	NZI HRC Cutout 30A Complete	NZI	NZ	30A	Grey		Porcelain & ETPNFM	Each	620g	1
144118	NZI HRC Cutout 30A Plug Only	NZI	NZ	30A	Grey		Porcelain & ETPNFM	Each	130g	1
144495	NZI HRC Cutout 30A Base Only	NZI	NZ	30A	Grey		Porcelain & ETPNFM	Each	460g	1
HRC Series – 60A*										
144401	NZI HRC Cutout 60A Complete	NZI	NZ	60A	Grey		Porcelain & ETPNFM	Each	1.7kg	15
144460	NZI HRC Cutout 60A Complete (Fuse Installed)	NZI	NZ	60A	Grey	60 KR85	Porcelain & ETPNFM	Each	1.8kg	15
144525	NZI HRC Cutout 60A Plug Only	NZI	NZ	60A	Grey		Porcelain & ETPNFM	Each	595g	30
144630	NZI HRC Cutout 60A Plug Only (Fuse Installed)	NZI	NZ	60A	Grey	60 KR85	Porcelain & ETPNFM	Each	645g	30
144509	NZI HRC Cutout 60A Base Only	NZI	NZ	60A	Grey		Porcelain & ETPNFM	Each	1.1kg	15

* HRC – some brown still in stock, phased change to grey



HG PHENOLIC PLASTIC FUSEHOLDERS

Part Number	Description	Brand	Origin	Amps	Rating	Configuration	Complies	Unit	Weight	Box Qty	
32A Fuseholders											
540161	G06 32A DIN EE/EE	China	32A	550V	End Entry	End Entry	AS/NZS 60269	Each	85g	5	
540757	G06 32A DIN BE/BE	China	32A	550V	Back Entry	Back Entry	AS/NZS 60269	Each	85g	5	
63A Fuseholders											
676004	NZI K07 63A EE/EE	NZI	NZ	63A	500V	End Entry	End Entry	BS88 Part2 1975	Each	260g	6
676012	NZI K07 63A BE/BE	NZI	NZ	63A	500V	Back Entry	Back Entry	BS88 Part2 1975	Each	270g	6
676020	NZI K07 63A BE/EE	NZI	NZ	63A	500V	Back Entry	End Entry	BS88 Part2 1975	Each	265g	6
678023	NZI K07 63A BS/BE	NZI	NZ	63A	500V	Back Stud	Back Entry	BS88 Part2 1975	Each	320g	1
678031	NZI K07 63A BS/EE	NZI	NZ	63A	500V	Back Stud	End Entry	BS88 Part2 1975	Each	320g	1
678058	NZI K07 63A BB/EE	NZI	NZ	63A	500V	Back Busbar	End Entry	BS88 Part2 1975	Each	290g	1
678066	NZI K07 63A EB/EE	NZI	NZ	63A	500V	End Busbar	End Entry	BS88 Part2 1975	Each	280g	1
678074	NZI K07 63A EB/BE	NZI	NZ	63A	500V	End Busbar	Back Entry	BS88 Part2 1975	Each	280g	1
678007	NZI K07 63A BS/BS	NZI	NZ	63A	500V	Two Back Studs		BS88 Part2 1975	Each	380g	1
100A Fuseholder											
678678	NZI L14 100A EE/EE	NZI	NZ	100A	500V	End Entry	End Entry	BS88 Part2 1975	Each	870g	1



Busbar Support



DMC Standoff



DMC Top View



FB-19/044



FC-19/064



FD-19/038

BUSBAR SUPPORT, DMC STANDOFFS & FASTLUG CONNECTORS

Part Number	Description	Brand	Origin	Volts	Colour	Bolt	Construction	Complies With	Unit	Weight	Box Qty
Porcelain Busbar Support											
186112	NZI Busbar Support Complete	NZI	NZ	3kV	White	M10	Porcelain & ETPNFM	IEC 60168	Each	215g	12

Part Number	Description	Brand	Origin	Volts	Colour	Height	Construction	Complies With	Unit	Weight	Box Qty
M10 DMC Standoffs											
515299	NZI 6/35/M10 DMC Standoff	NZI	NZ	1.5kV	Grey	35mm	DMC & Z/P Steel	IEC 60660	Each	90g	12
515329	NZI 6/38/M10 DMC Standoff	NZI	NZ	1.5kV	Grey	38mm	DMC & Z/P Steel	IEC 60660	Each	105g	12
515353	NZI 6/45/M10 DMC Standoff	NZI	NZ	1.5kV	Grey	45mm	DMC & Z/P Steel	IEC 60660	Each	130g	12
514772	NZI 6/50/M10 DMC Standoff	NZI	NZ	1.5kV	Grey	50mm	DMC & Z/P Steel	IEC 60660	Each	150g	12
M8 DMC Standoffs											
515191	NZI 6/35/M8 DMC Standoff	NZI	NZ	1.5kV	Grey	35mm	DMC & Z/P Steel	IEC 60660	Each	95g	12
515221	NZI 6/38/M8 DMC Standoff	NZI	NZ	1.5kV	Grey	38mm	DMC & Z/P Steel	IEC 60660	Each	110g	12
515264	NZI 6/45/M8 DMC Standoff	NZI	NZ	1.5kV	Grey	45mm	DMC & Z/P Steel	IEC 60660	Each	135g	12
514705	NZI 6/50/M8 DMC Standoff	NZI	NZ	1.5kV	Grey	50mm	DMC & Z/P Steel	IEC 60660	Each	155g	12

Part Number	Description	Brand	Origin	Cable Size	Construction	Complies With	Unit	Weight	Box Qty
Fastlug Connectors									
466824	FB-19/044 Connector	NZI	NZ	10-16mm ²	ETPNFM	AS/NZS 60998	Each	45g	10
466913	FC-19/064 Connector	NZI	NZ	25-35mm ²	ETPNFM	AS/NZS 60998	Each	95g	20
467022	FD-19/038 Connector	NZI	NZ	50-70mm ²	ETPNFM	AS/NZS 60998	Each	145g	10