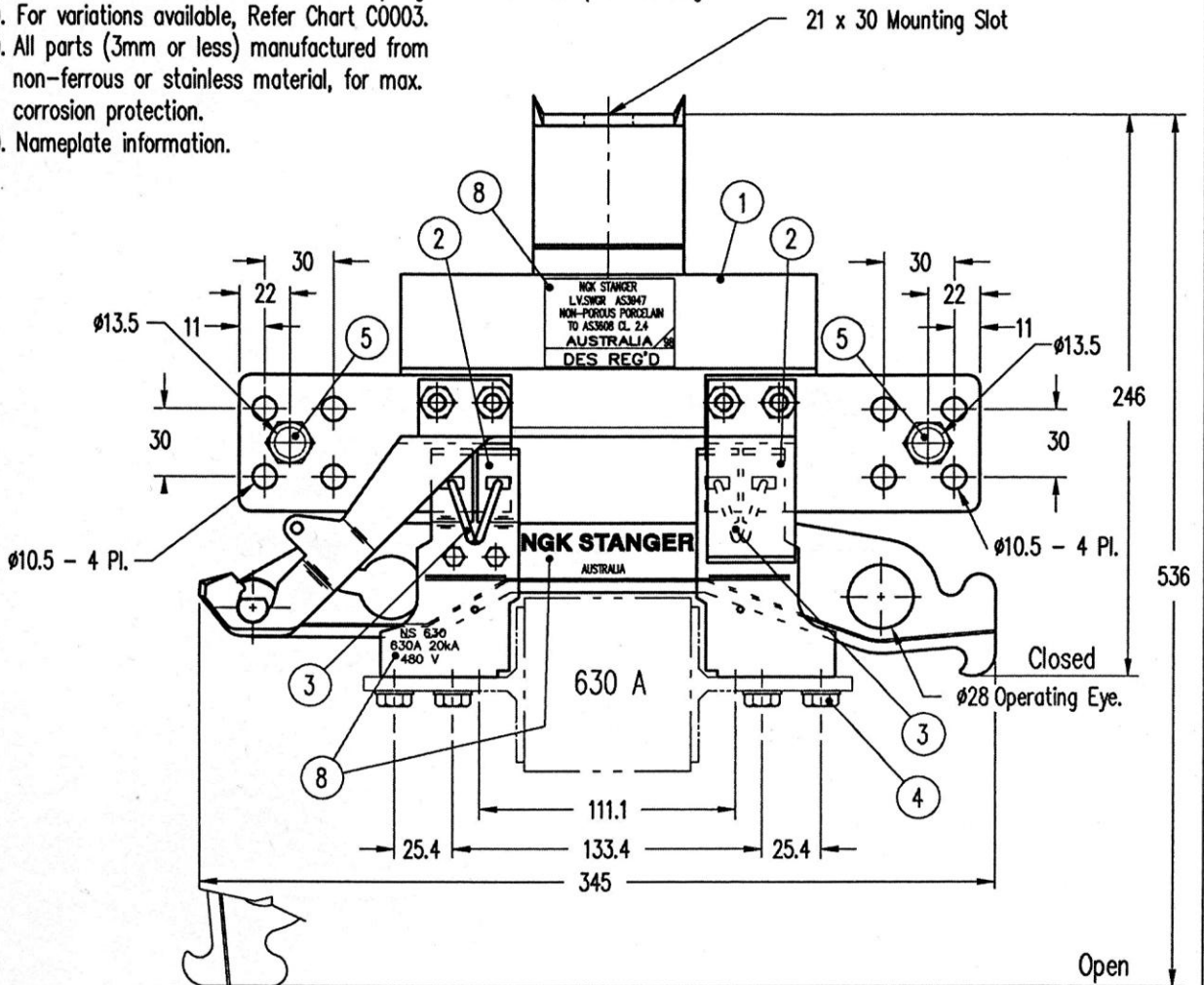


SHEET A4

Notes: -

- 1). Non-Porous Porcelain Insulator. To AS2947.1-1989 Clause 7.10
- 2). Silver to silver contacts.
- 3). Contact pressure assured via stainless steel 'Lyre' springs.
- 4). M8 x 20 S.Stl Hex. Hd. Screw and S.Stl Flat Washer.
- 5). M12 x 40 S.Stl Bolt, Nut, Washer & Spring Washer for Compression Lug.
- 6). For variations available, Refer Chart C0003.
- 7). All parts (3mm or less) manufactured from non-ferrous or stainless material, for max. corrosion protection.
- 8). Nameplate information.



Technical Data

Applicable Standard : \* AC-22 as per A.S.1775-1975 but with  $I/I_e$  and  $I_c/I_e$  as below.

A) Ratings

Rated Operational Voltage.  
 Rated Insulation Voltage.  
 Rated Thermal Current  
 Rated Operational Current  
 Rated Frequency  
 Utilization Category.  
 Rated Making Capacity.  
 Rated Breaking Capacity.  
 Rated Short-Time Current.  
 rms sym - 1s

$U_e$  480 V  
 $U_i$  660 V  
 $I_{th}$  630 A  
 $I_e$  630 A  
 50 Hz.  
 \* AC-22  
 $I/I_e$  \* 1  
 $I_c/I_e$  \* 1  
 $I_{sc}$  20 kA.

C). Temperature Rise.

Contacts @ 630A  
 Terminals. @ 630A 33° C

D). Dielectric Test Voltage.

Terminal to Earth. 50 Hz. Dry W/Stand. 2.5 kV.  
 1.2 x 50 Impulse W/Stand. 30 kV.  
 Terminal to Terminal. 50 Hz. Dry W/Stand. 2.5 kV.  
 1.2 x 50 Impulse W/Stand. 50 kV.

B) Clearance Distances

Between Live Parts. (Open) 77/82 mm  
 Between Live Parts and Earth. 32 mm

E). Weight.

Gross 9.9 kg./3

This document is the property of NGK STANGER P/L and must not be copied or reproduced without its written permission nor disclosed to any third party.

SCALE	1 : 3
DRN.	S.daw
CH'D.	S.daw
APP'D.	S.daw
ISSUED	9-92

L.V. Fused Isolating Link.



CAT No		ISSUE	
DRG No	NZ4286SEQEB		4

2	ref inclined 30° deleted, Notes 4,5			
1	6,7,8 were Notes 5,6,7,8,9. C/A8424 10-92	DATE	9-92	DRN
1	Original	CHANGE		
4	CJ19 added, Slot was Ø21 Hole 3-03	AUTH	3	
	Contact No. revised. C/A9870 7-98			