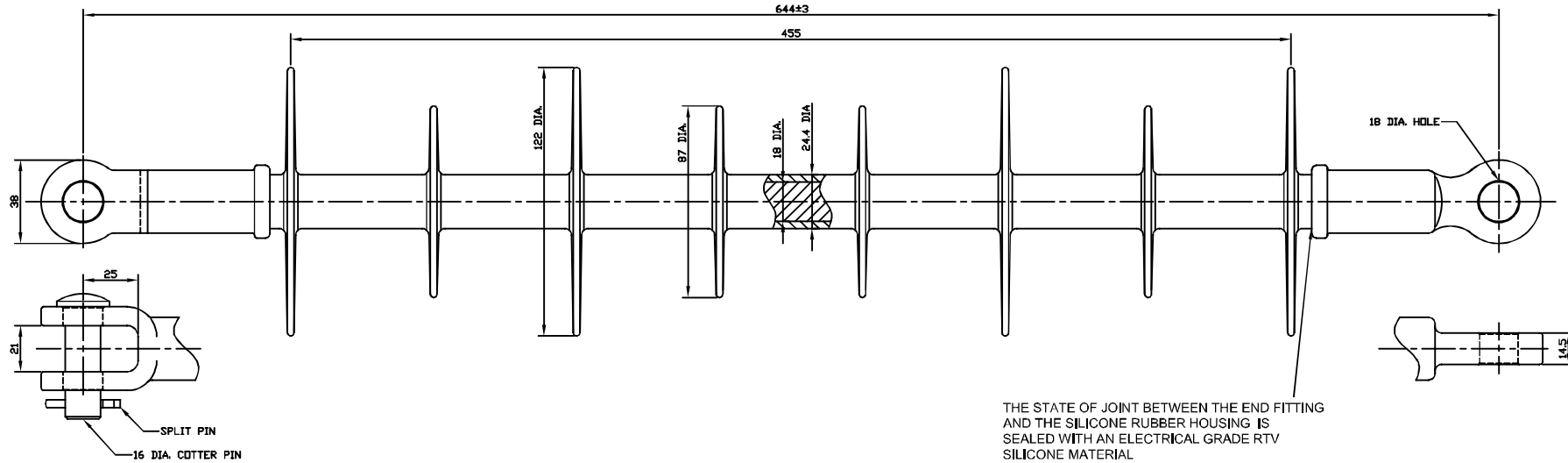


No.	DATE	REVISION	CHECK



DIMENSIONS

LEAKAGE DISTANCE 1,070 mm
 DRY ARCING DISTANCE 542 mm

MECHANICAL VALUES

SPECIFIED MECHANICAL LOAD 90 kN
 TORSIONAL LOAD 62 N-m

ELECTRICAL VALUES

60 Hz FLASHOVER-DRY 218 kV
 60 Hz FLASHOVER-WET 170 kV
 IMPULSE FLASHOVER-POS 355 kV
 IMPULSE FLASHOVER-NEG 430 kV
 IMPULSE WITHSTAND-POS 315 kV
 IMPULSE WITHSTAND-NEG 395 kV

RADIO INFLUENCE VOLTAGE DATA

60 Hz TEST VOLTAGE 30 kV
 MAXIMUM RIV @ 1,000kHz 7.8 uV

PACKING INFORMATION

NET WEIGHT EACH 1.8 KG
 PACKED WEIGHT EACH 2.0 KG
 NO. IN STANDARD PACKAGE 8 PC

THE STATE OF JOINT BETWEEN THE END FITTING AND THE SILICONE RUBBER HOUSING IS SEALED WITH AN ELECTRICAL GRADE RTV SILICONE MATERIAL

NOTE:

1. END FITTING ARE MADE FROM CARBON STEEL CASTINGS AND GALVANIZED
2. FIBERGLASS ROD ARE MADE FROM EPOXY RESIN.
3. THIS ASSEMBLY USES A GALVANIZED STEEL ROUND PIN AND STAINLESS STEEL SPRING COTTER KEY

DRAWN	DESIGN	CHECK	APPROVE	DATE
	C.H.PARK		S.Y.JUNG	
	OCT.10.2008		OCT.10.2008	SCALE /
PART	46kV DEAD-END POLYMER INSULATOR OF DISTRIBUTION FOR 90kN			
NAME	DS-46(HI-PERFORMANCE INSULATOR)	DWG. NO.	ISC9-1070-CAB	