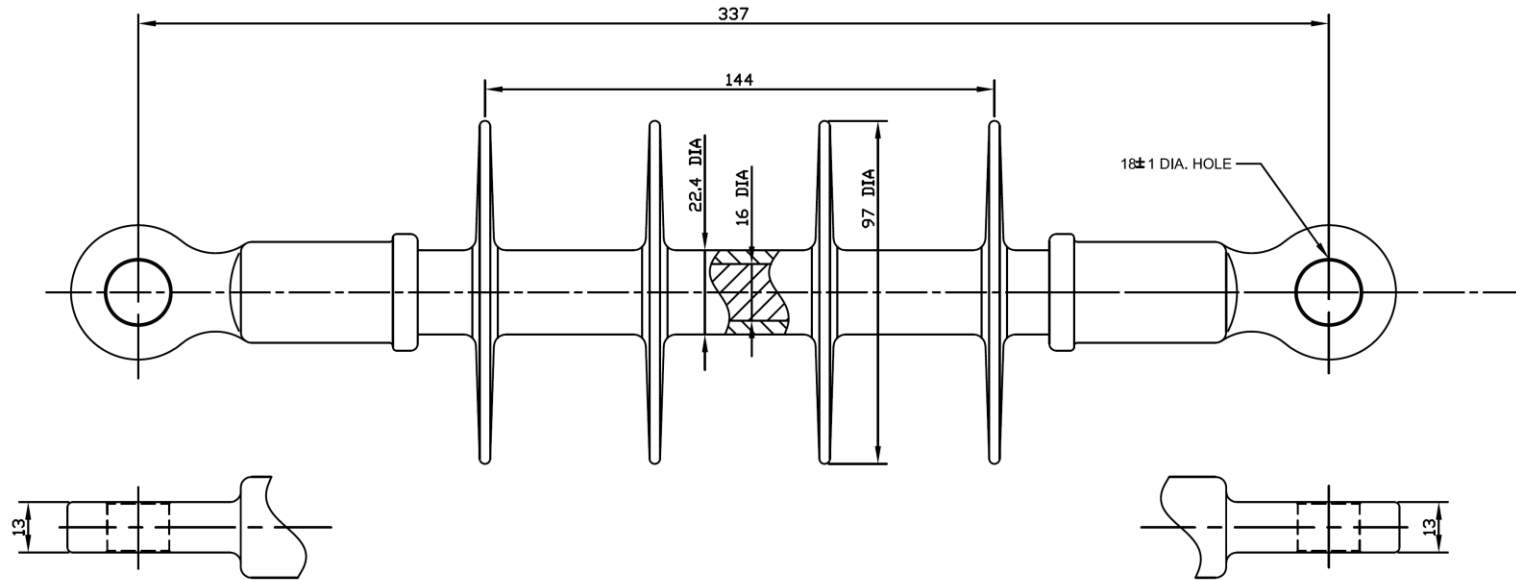


ANSI CLASS DS-15
DTR CATALOG NO. ISA7-0459-AGG

No.	DATE	REVISION	CHECK

METRIC DIMENSIONS UNLESS OTHERWISE NOTED



NOTE:

1. END FITTING ARE MADE FROM CARBON STEEL CASTINGS AND GALVANIZED
2. FIBERGLASS ROD ARE MADE FROM EPOXY RESIN.
3. THIS ASSEMBLY USES A GALVANIZED STEEL ROUND PIN AND STAINLESS STEEL SPRING COTTER KEY
4. HARDWARE ENDS TO BE STAMPED WITH DTR, DS-15, Manufacturing date, 70kN

REQUIREMENTS

SECTION LENGTH -----	337 mm
SPECIFIED MECHANICAL LOAD -----	70 kN
ROUTINE TEST LOAD RATING -----	35 kN
DRY ARCING DISTANCE -----	218 mm
LEAKAGE DISTANCE -----	459 mm
60 Hz DRY FLASHOVER -----	110 kV
60 Hz WET FLASHOVER -----	73 kV
POSITIVE IMPULSE CRITICAL FLASHOVER -----	140 kV
WEIGHT -----	1.13 kg

The tolerance on all dimensions e.g. diameter, length and creepage distance shall be as follows :
±1.0mm when d<100mm
±2.0mm when d>100mm with a maximum of 50mm

DRAWN	DESIGN	CHECK	APPROVE	DATE
	C.H.PARK		S.Y.JUNG	
	MAR.20.2007		MAR.20.2007	SCALE /
PART	15kV DEAD-END POLYMER INSULATOR OF DISTRIBUTION FOR 70kN			
NAME	DS - 15(ANSI)	DWG. NO.	ISA7-0459-AGG	

DTR CORPORATION