

SHEET A4

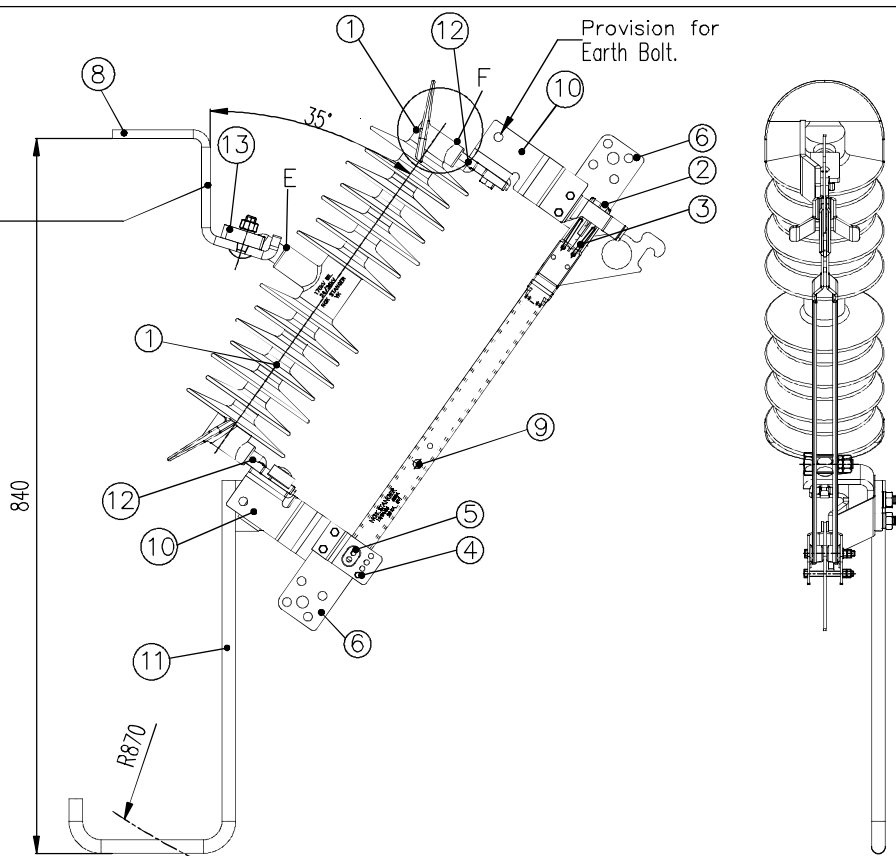
OPTIONAL  
Earth Support Kit  
72018  
2 Req'd / Sw.

Anti-Rotating  
Locking Feature

OPTIONAL  
Stainless Steel  
'U'-Bolt Kit  
69297/2  
4 Req'd / Sw.



ALTERNATIVE OPTION  
Single Bolt Cable Clamp  
71235  
2 Req'd / Sw.



Notes:-

- 1). Insulator : Inherently puncture proof. Colour : Light Grey. COMPOSITE Insulator: F/Glass core with POLYMER sheds & housing, Extra thick silicon rubber 4.5mm around centre pin, End pins are with blind holes and ends of fiber glass rod are not exposed, they are covered by metal & silicon rubber over it. Extended creepage distance E to F 1045mm. Supplied with Mounting Bracket. (Plain w/o Spikes) for use on F/Glass X-Arm.
- 2). Silver to silver front contacts.
- 3). Front contact pressure assured via stainless steel 'Lyre' springs.
- 4). 90° Removable Stop.
- 5). Hinge Joint.: Silver washers with constant pressure 'Belleville' washers.
- 6). Multi-purpose terminal palm, for compression lugs or cable clamps. Refer Price List for cable clamp kits available.
- 7). All parts for contact blade (3mm or less) manufactured from non-ferrous or stainless material, for max. corrosion protection.
- 8). Crossarm Mounting Bracket. Fasteners should be stainless steel-69196/10
- 9). Spacer
- 10). Support bracket S.S 316
- 11). Earthing attachment - SS316-  $\phi$ 16
- 12). Bushing support pin - SS304
- 13). Hood pin - SS304
- 14). All fasteners and washers should be stainless steel grade

Technical Data

A) Ratings	Rated Voltage. (max.)	U =	24	36	B) Clearance Distances	Creepage.	$L_s =$	1045 mm
	Nominal Voltage	$V_n =$	22	33				
Insulation Level	B.I.L		170 kV.		C). Temperature Rise. Contacts.	Terminals.		<32 °C
	Max. Rated Normal Current.	$I_n =$	630 A	50 Hz.				
Rated Frequency.		$I_m =$			D). Dielectric Test Voltage.	Terminal To Earth : 50 Hz. Dry W/Stand.		70 kV
Rated Making Capacity.		$I_{br} =$						
Rated Breaking Capacity		$I_{sc} =$	20 kA.		Terminal To Terminal : 50 Hz. Dry W/Stand.			70 kV
Rated Short - Time Current 1s		P =	20	5.9	50 Hz. Wet W/Stand.			170 kVp.
Pollution Performance No.	E.S.A.A. Med. Rainfall.		16.4	4.8	1.2 x 50 Impulse W/Stand.			80 kV
	High		26.8	8	Terminal To Terminal : 50 Hz. Dry W/Stand.			80 kV
	Low				50 Hz. Wet W/Stand.			195 kVp.
					1.2 x 50 Impulse W/Stand.			7.2 kg
					E). Weight. Net			
					(With Mounting Brkt. and w/o earthing attachment)			
		$L_s/V_n$	mm/kV	47.5	31.7			

This document is the property of NGK STANGER P/L and must not be copied or reproduced without its written permission nor disclosed to any third party.

3	Drd updated	04/13	RAMANA	FUJII	DATE	DRN	AUTH
2	NOTE 12 ADDED	05/12	RAMANA	FUJII	CHANGE		
1	Original	03/12	RAMANA	FUJII			
ISSUE							
ISSUED		03/12					

SCALE	1 : 1
DRN.	RAMANA
CH'D.	RAMANA
APP'D.	FUJII
ISSUED	03/12

**C - Type POLYMER MVI**  
**24/36 kV. Single Pole Isolating Link.**  
**170 kV BIL**

Quality  
Endorsed  
Company  
AS/NZS ISO 9001:2000  
Licence Number 368  
Standards Australia

**NGK STANGER**  
NGK STANGER Pty. Ltd. A.B.N. 89 004 225 012  
MELBOURNE AUSTRALIA

SIZE	DRAWING No.	ISSUE
A4	70423/2EE	3