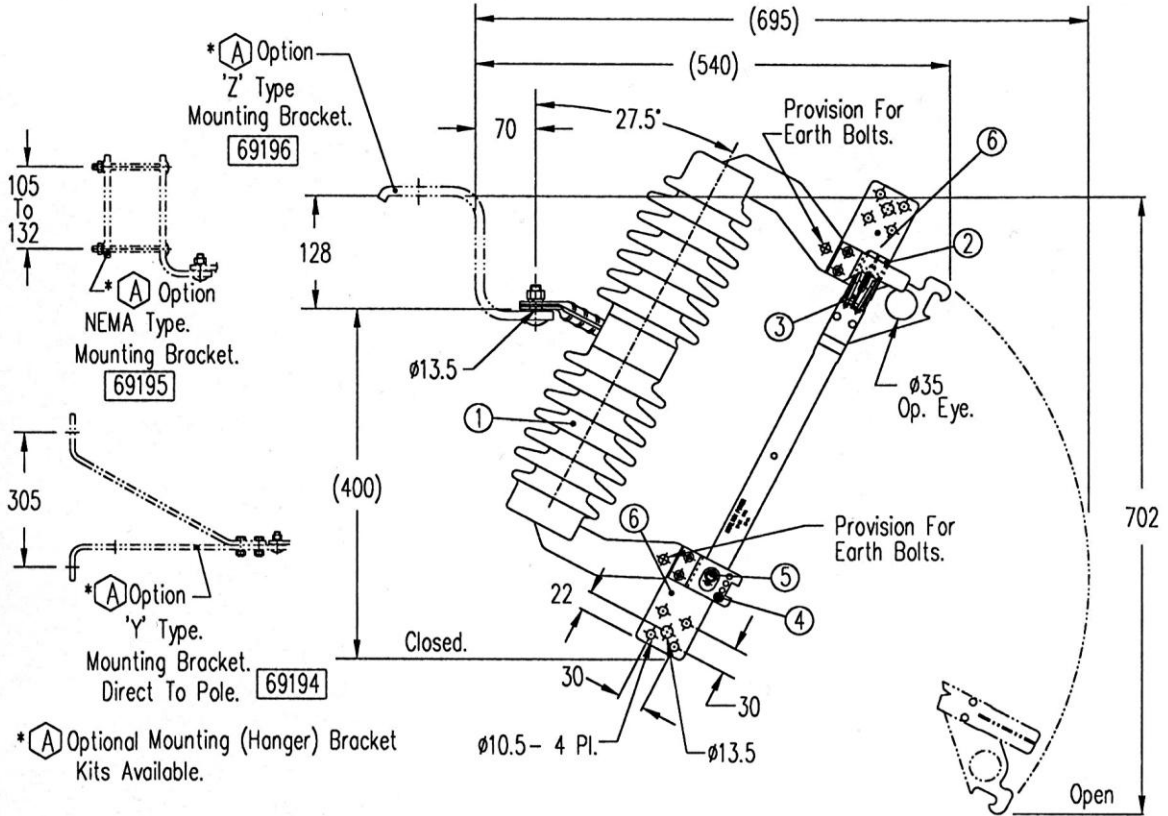


SHEET A4



\*A Optional Mounting (Hanger) Bracket Kits Available.

Notes:-

- 1). Insulator. : Inherently puncture proof & birdproof. Colour : Light Grey.
- 2). Silver to silver front contacts.
- 3). Front contact pressure assured via stainless steel 'Lyre' springs.
- 4). Optional :- 90° or 60° Removable Stop.
- 5). Hinge Joint.: Silver washers with constant pressure 'Belleville' washers.
- 6). Multi-purpose terminal palm, for compression lugs or cable clamps. Refer Price List for cable clamp kits available.
- 7). Optional X-Arm Mounting Kits.: 69196 Shown. For other Styles available Refer Sheets 2 & 3.
- 8). All parts (3mm or less) manufactured from non-ferrous or stainless material, for max. corrosion protection.

Technical Data

Applicable Standard.: AS 1025

A) Ratings

Rated Voltage. (max.)  
 Nominal Voltage  
 Insulation Level  
 Max. Rated Normal Current.  
 Rated Frequency.  
 Rated Making Capacity.  
 Rated Breaking Capacity  
 Rated Short - Time Current 1s  
 Pollution Performance No.  
 E.S.A.A. Med. Rainfall.  
 High  
 Low  
 E.C.N.S.W.  
 S.E.C.W.A.  
 Specific Creepage.  $L_s/V_n$

U =	kV.	
	24	36
V <sub>n</sub> =	22	33
B.I.L	170 kV.	
I <sub>n</sub> =	630 A	
	50 Hz.	
I <sub>m</sub> =		
I <sub>br</sub> =		
I <sub>sc</sub> =	20 kA.	
P =	20	5.9
	16.4	4.8
	26.8	8
	21.2	6.3
	32.9	9.7
	27.3	18.2

B) Clearance Distances

Creepage.	L <sub>s</sub> =	600 mm
Protected Creepage.	L <sub>sp</sub> =	170 mm
Dry Arcing Distance	L <sub>a</sub> =	250 mm

C). Temperature Rise.

Contacts.	32 °C
Terminals.	32 °C

D). Dielectric Test Voltage.

Terminal To Earth : 50 Hz. Dry W/Stand.	70 kV
50 Hz. Wet W/Stand.	70 kV
1.2 x 50 Impulse W/Stand.	170 kVp.
Terminal To Terminal : 50 Hz. Dry W/Stand.	80 kV
50 Hz. Wet W/Stand.	80 kV
1.2 x 50 Impulse W/Stand.	195 kVp.

E). Weight. Net (W/O. Mounting Brkt.)  
 Gross

Net (W/O. Mounting Brkt.)	12 kg
Gross	

This document is the property of NGK STANGER P/L and is not to be copied or reproduced without its written permission nor disclosed to any third party.

WCT	8-98	8	C/A9858
WCT	4-94	7	C/A8999
WCT	9-91	4	C/A7909
DATE	DRN	AUTH	27.5° was 30°
12-90	5-90	9-89	803
Was Sheet 1 of 3	Original	CHANGE	
ISSUE	ISSUED	9-89	

SCALE	1 : 8
DRN.	<i>[Signature]</i>
CH'D.	<i>[Signature]</i>
APP'D.	<i>[Signature]</i>
ISSUED	9-89

**C - Type.**  
**24/36 kV. Single Pole Isolating Link.**  
**Single X-Arm Or Direct To Pole. 27.5° Mntg.**

 Quality Endorsed Company <small>AS/NZS ISO 9002:1994                  Licence Number 368                  Standards Australia</small>	 <b>NGK STANGER</b> <small>NGK STANGER Pty. Ltd. A.C.N. 004 225 012                  MELBOURNE AUSTRALIA</small>					
	<table border="1"> <tr> <td>SIZE</td> <td>DRAWING No.</td> <td>ISSUE</td> </tr> <tr> <td>A4</td> <td>70423/1</td> <td>8</td> </tr> </table>	SIZE	DRAWING No.	ISSUE	A4	70423/1
SIZE	DRAWING No.	ISSUE				
A4	70423/1	8				