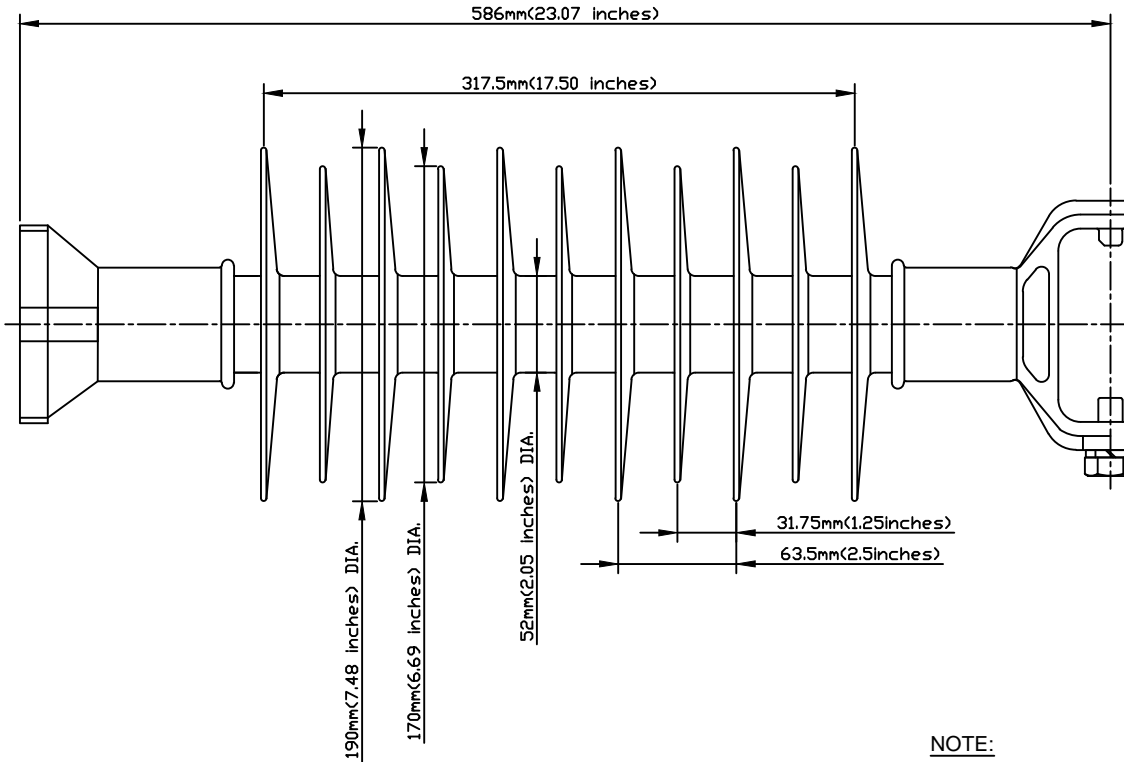
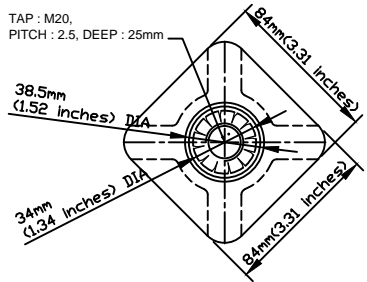


CODE No. LPV-46SK-HP-M20

NO.	DESCRIPTION	DWG. NO.	MATERIAL	Q'TY	FINISH/SIZE	NOTE



DIMENSIONS

LEAKAGE DISTANCE	1,703 mm
DRY ARCING DISTANCE	433 mm
SHEDS Q'TY	11 PCS

MECHANICAL VALUES

SPECIFIED CANTILEVER LOAD	12.5 kN
Max. DESIGN CANTILEVER LOAD	6 kN
TENSILE STRENGTH	22 kN

ELECTRICAL VALUES

Low-Freq. FLASHOVER-DRY	186 kV
Low-Freq. FLASHOVER-WET	152 kV
IMPULSE FLASHOVER-POS	277 kV
IMPULSE FLASHOVER-NEG	307 kV
Low-Freq. WITHSTAND-DRY	150 kV
Low-Freq. WITHSTAND-WET	120 kV
IMPULSE WITHSTAND-POS	255 kV
IMPULSE WITHSTAND-NEG	280 kV

PACKING INFORMATION

NET WEIGHT EACH	7.59 kg
NO. IN STANDARD PACKAGE	1 PCS

NOTE:

1. END FITTING ARE MADE FROM CARBON STEEL FORGED & GALVANIZED.
2. FIBERGLASS ROD IS MADE FROM EPOXY RESIN.
3. CLAMP AND STUD BASE DIMENSIONS ARE IN ACCORDANCE WITH ANSI C29.18
4. THE DIA. OF FRP ROD IS 45mm(1.77inches) SOLID.
5. BASE AND INSULATOR ASSEMBLED WITH M20 BOLT AND WASHER.
6. THE TOLERANCE ON ALL DIMENSIONS SHALL BE AS FOLLOWS:
 $\pm(0.04d+1.5)$ mm when $d<300$ mm
 $\pm(0.025d+6)$ mm when $d>300$ mm with a maximum of 50mm

NO.	DATE	REVISIONS	DESIGNED	APPROVED	REMARKS	DRAWN BY	DESIGNED BY	CHECKED BY	APPROVED BY	SCALE	DATE	NAME	DESCRIPTION	REF. NO.	DWG. NO.	SHEET NO.
1/R	02/09/2017	INITIAL RELEASE	J.H.PARK	C.H.PARK		J.H.PARK			C.H.PARK	1/1						

