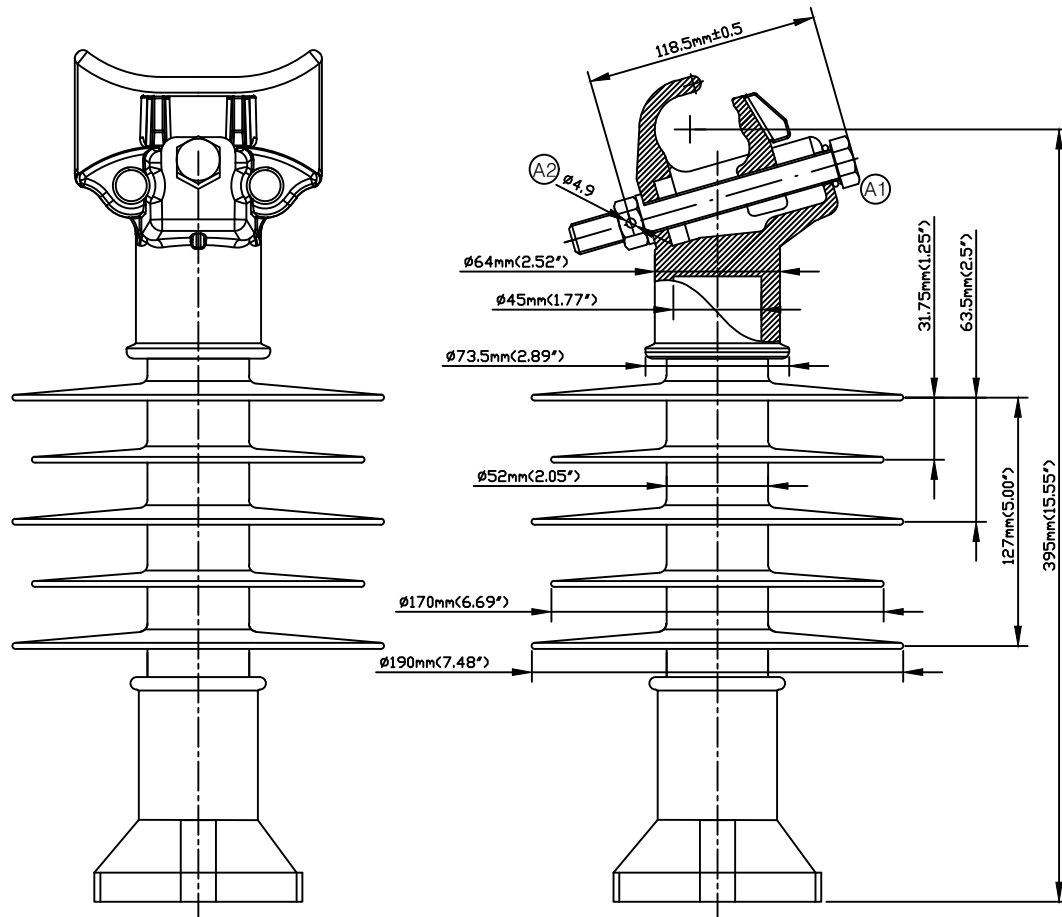
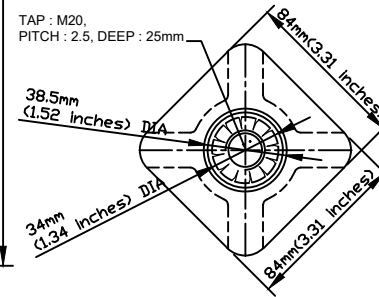


# CATALOG NO. LPSC-25SK-HP-M20



TAP : M20,  
PITCH : 2.5, DEEP : 25mm



## NOTE:

- TOP END FITTING IS MADE FROM ALUMINUM ALLOY & ANODIZED.
- BASE END FITTING IS MADE FROM STEEL FORGED & GALVANIZED.
- FIBERGLASS ROD IS MADE FROM EPOXY RESIN (ECR).
- CLAMP AND STUD BASE DIMENSIONS ARE IN ACCORDANCE WITH ANSI C29.18.
- THE DIA. OF FRP ROD IS 45mm(1.77 inches) SOLID.
- BASE AND INSULATOR ASSEMBLED WITH M20 BOLT AND WASHER.
- THE THICKNESS OF HOT DIP GALVANIZING SHALL BE MINIMUM 79um ACCORDING TO ASTM A 153.
- THE TOLERANCE ON ALL DIMENSIONS SHALL BE AS FOLLOWS:  
 $\pm(0.04d+1.5)$ mm when  $d < 300$ mm  
 $\pm(0.025d+6)$ mm when  $d > 300$ mm with a maximum of 50mm

## REVISIONS

REV	LOCATION	NOTICE	DSN BY	APP BY	DATE
I/R		INITIAL RELEASE	J.H. PARK	C.H. PARK	06/17/2016
A		1. MOVED BOLT POSITION 2. CHANGED FIXED PIN SIZE (Ø5 to -) 3. ADDED MATERIAL DETAILS	B.J. KIM	D.H. YOO	07/19/2024

## DIMENSIONS

LEAKAGE DISTANCE	783 mm
DRY ARCING DISTANCE	243 mm
SHEDS Q'TY	5 PCS

## MECHANICAL VALUES

SPECIFIED CANTILEVER LOAD	12.5 kN
---------------------------	---------

## ELECTRICAL VALUES

Low-Freq. WITHSTAND-WET	65 kV
IMPULSE WITHSTAND-POS	140 kV
IMPULSE WITHSTAND-NEG	160 kV

## PACKING INFORMATION

NET WEIGHT EACH	6.06 kg
NO. IN STANDARD PACKAGE	1 PCS

## Material : Special Clamp

- Chemical Analysis (KS D 6008 : 2002) (Unit:wt%)

Element	Cu	Si	Mg	Zn	Fe	Mn
Spec	0.20 ↓	6.5~7.5	0.25~0.45	0.10 ↓	0.20 ↓	0.10 ↓
AC4CH	Ni	Ti	Pb	Sn	Cr	Al
	0.05 ↓	0.20 ↓	0.05 ↓	0.05 ↓	0.05 ↓	Rest

- Mechanical Properties (KS D 6008 : 2002)

AC4CH-T6	Tensile Strength (kgf/cm <sup>2</sup> )	Elongation (%)	Brinell Hardness [HB(10/500)]
	240 ↑	5 ↑	about 85

- Heat Treatment (KS D 6008 : 2002)

AC4CH-T6	Method	Solution Treatment		Age Hardening Treatment	
		Temperature (°C)	Time (h)	Temperature (°C)	Time (h)
	Age Hardening treatment after Solution Treatment	about 535	about 8	about 155	about 6

## Material : Stud Base

- Chemical Analysis (KS D 3752 : 2019) (Unit:wt%)

Element	C	Si	Mn	P	S
Spec	0.18~0.23	0.15~0.35	0.30~0.60	0.030 ↓	0.035 ↓
S20C					

- Mechanical Properties (KS D 3752 : 2019)

S20C	Yield Point (kgf/cm <sup>2</sup> )	Tensile Strength (kgf/cm <sup>2</sup> )	Elongation (%)	Tightening (%)	Hardness (HB)
	25 ↑	41 ↑	28 ↑	-	116 ~ 174

- Heat Treatment (KS D 3752 : 2019)

S20C	Method	Temperature (°C)
		Normalizing 870 ~ 920 (Air Cooling)

REPLACEABLE MATERIAL	NO	PART NAME	EA	MATERIAL	DWG NO	
PART LISTS						
ORIGINAL DWG	COMMON TOLERANCE	DATE	07/19/2024			
	DECIMAL ANGLE FRACTION	APP DIVISION	R&D Team			
	MATERIAL	CHK BY	KC. PARK APP BY			DH. YOO
	HEAT TREATMENT	DWG BY	BJ. KIM			CHK BY
		DSN BY	CHK BY	TITLE Polymer Line Post Insulator for Distribution (25kV HP Special Clamp)		
		DWG DIVISION	R&D Team			
RELEVANT DWG	APPLICABLE ITEM	SCALE	UNIT	WEIGHT	SIZE	
PART NO		1:1	mm		A3	
					DWG NO	
					LPSC-25SK-HP-M20	
					SHEET	
					1 OF 1	