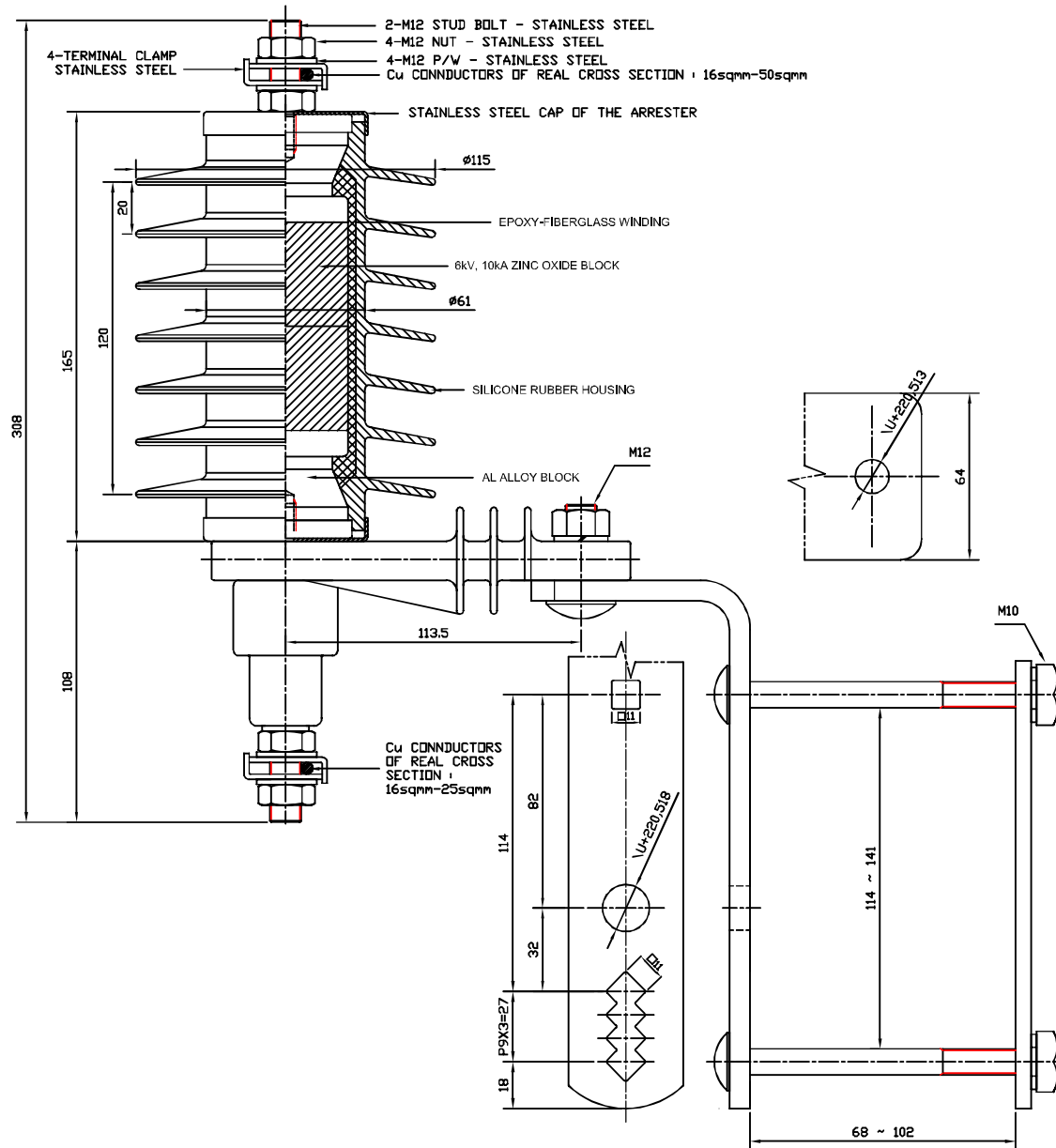


METRIC DIMENSIONS UNLESS OTHERWISE NOTED

No.	DATE	REVISION	CHECK



REQUIREMENTS

ARRESTER	
TAPE	CA 12/10.2 D
RATED VOLTAGE	12 kV
NORMAL DICHARGE CURRENT	10 kA
MCOV	9.6 kV
LINE DISCHARGE CLASS	2
HIGH CURRENT IMPLUSE(4/10 μs)	100kA
TOV CAPABILITY	14,12kV for 1s
RATED SHORT CIRCUIT CURRENT	20kA(0.2s)
RESIDUAL VOLTAGE AT 10kA(I _n)	34,30 kV
MAX. APP. CANT LOAD	1,710N
PULL STRENGTH	3,500N
MAX. TORQUE	50Nm
IMPULS VOLTAGE(1,2/50 μs)	100kV
POWER FREQUENCY VOLTAGE(WET)	50kV
LEAKAGE DISTANCE	503 mm
FLASHOVER DISTANCE	180mm
WEIGHT	4,2 kg
ZnO VARISTOR BLOCKS	
TYPE	ZV0060-040-048
RATED VOLTAGE	6 kV
NORMAL DICHARGE CURRENT	10 kA (Class 2)
MCOV	4.8 kV
DIMENSION	Dia. 48 mm/Height 40 mm
APPLIED QUANTITY	2 pcs
MANUFACTURER	DTR CORPORATION

DRAWN	DESIGN	CHECK	APPROVE	DATE
	C.H.PARK		S.Y.JUNG	
	JAN.14.2005		JAN.14.2005	SCALE /
PART	12kV POLYMER SURGE ARRESTER OF HEAVY DUTY			
NAME	CA 12/10.2 D	DWG. NO.	(E)AS012102-001	

