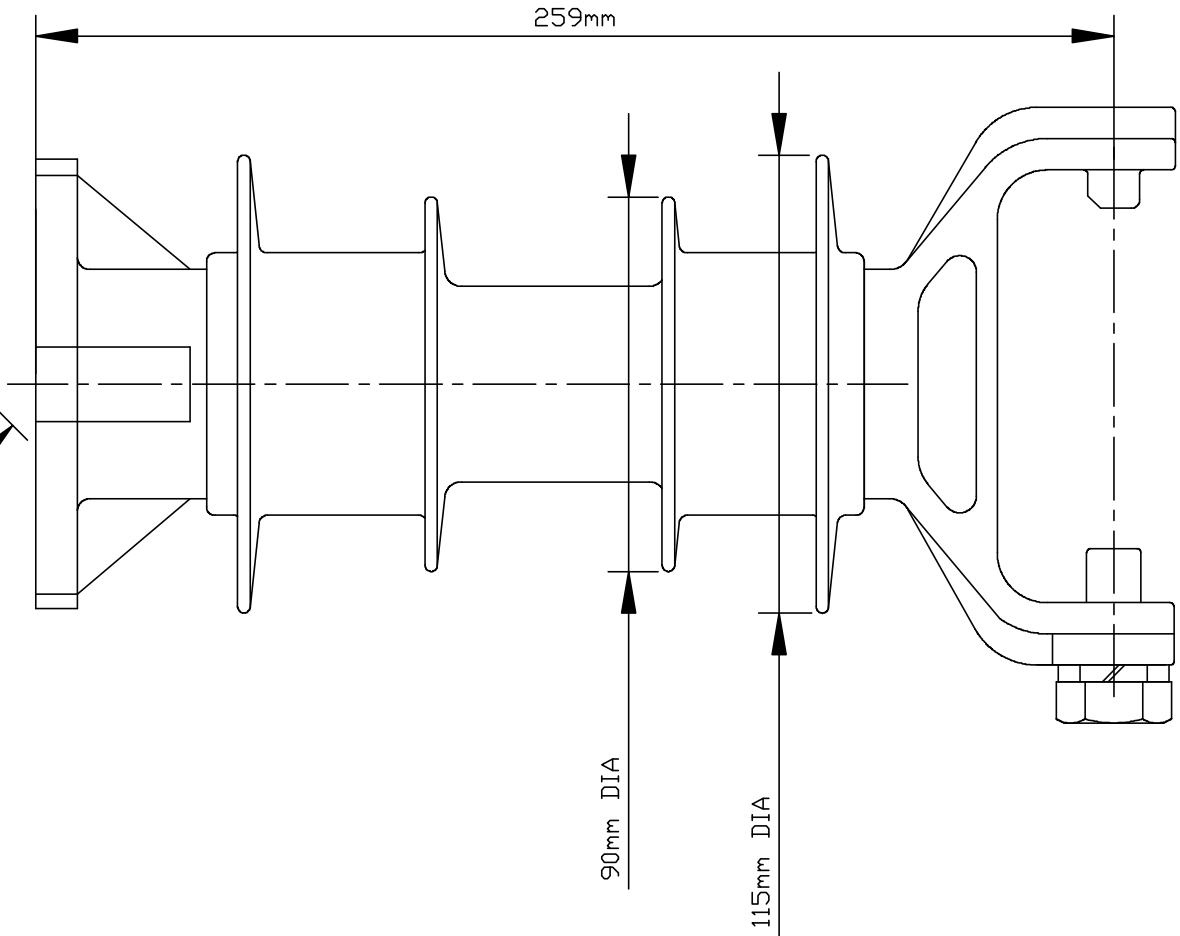
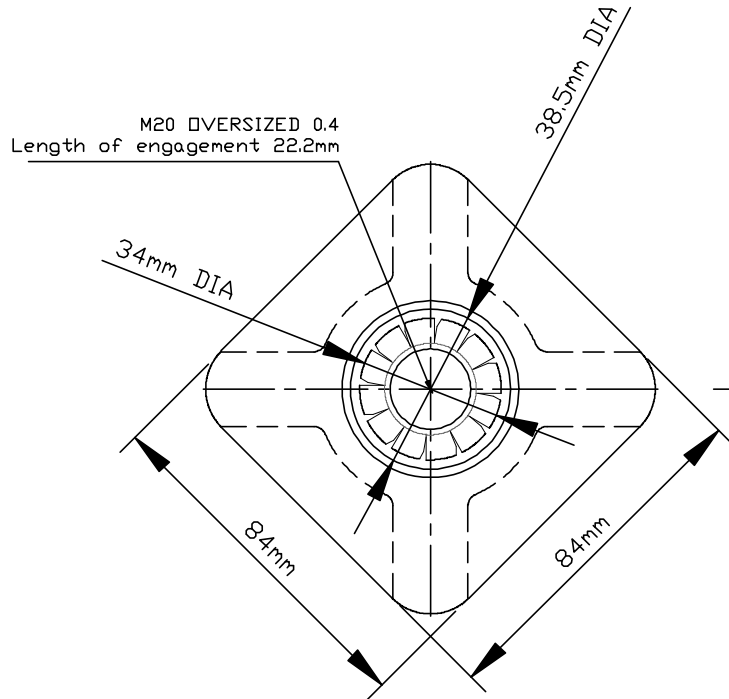


CATALOG No. DTR-LPV15SK-NZI

REV	REVISION NOTE	DATE	BY
I/R	INITIAL RELEASE	09/14/2009	C.H.PARK



DIMENSIONS

LEAKAGE DISTANCE	322 mm
DRY ARCING DISTANCE	196 mm
SHEDS Q'TY	4 PCS

MECHANICAL VALUES

SPECIFIED CANTILEVER LOAD	12.5 kN
Max. DESIGN CANTILEVER LOAD	6 kN
TENSILE STRENGTH	22 kN

ELECTRICAL VALUES

Low-Freq. FLASHOVER-DRY	86 kV
Low-Freq. FLASHOVER-WET	66 kV
IMPULSE FLASHOVER-POS	146 kV
IMPULSE FLASHOVER-NEG	193 kV

RADIO INFLUENCE VOLTAGE DATA

60 Hz TEST VOLTAGE	10 kV
MAXIMUM RIV @ 1,000kHz	2.5 uV

PACKING INFORMATION

NET WEIGHT EACH	3.66 kg
NO. IN STANDARD PACKAGE	4 PCS

NOTE:

1. END FITTINGS ARE MADE FROM SPHEROIDAL GRAPHITE CAST IRON.
2. FIBERGLASS ROD IS MADE FROM EPOXY RESIN.
3. CLAMP AND STUD BASE DIMENSIONS ARE IN ACCORDANCE WITH ANSI C29.7
4. THE DIA. OF FRP ROD IS 40mm SOLID.
5. BASE AND INSULATOR ASSEMBLED WITH M20 BOLT AND WASHER.

<small>THESE DRAWINGS AND SPECIFICATIONS, AND THE DATA CONTAINED THEREIN, ARE THE EXCLUSIVE PROPERTY OF DTR CORPORATION. THESE DRAWINGS ARE ISSUED IN STRICT CONFIDENCE AND SHALL NOT, WITHOUT THE PRIOR WRITTEN PERMISSION OF DTR CORPORATION, BE REPRODUCED, COPIED, OR USED FOR ANY PURPOSE WHATSOEVER, EXCEPT THE MANUFACTURE OF ARTICLES FOR DTR CORPORATION.</small>	DIMENSIONAL TOLERANCES UNLESS OTHERWISE NOTED X ±0.1 XX ±0.02 XXX ±0.010 ANGLES ±1°	Designed by C.H.PARK	Date 09/14/09	Part Number DTR-LPV15SK-NZI	Scale N/A
		DTR 15kV LINE POST INSULATOR VERTICAL			Filepath