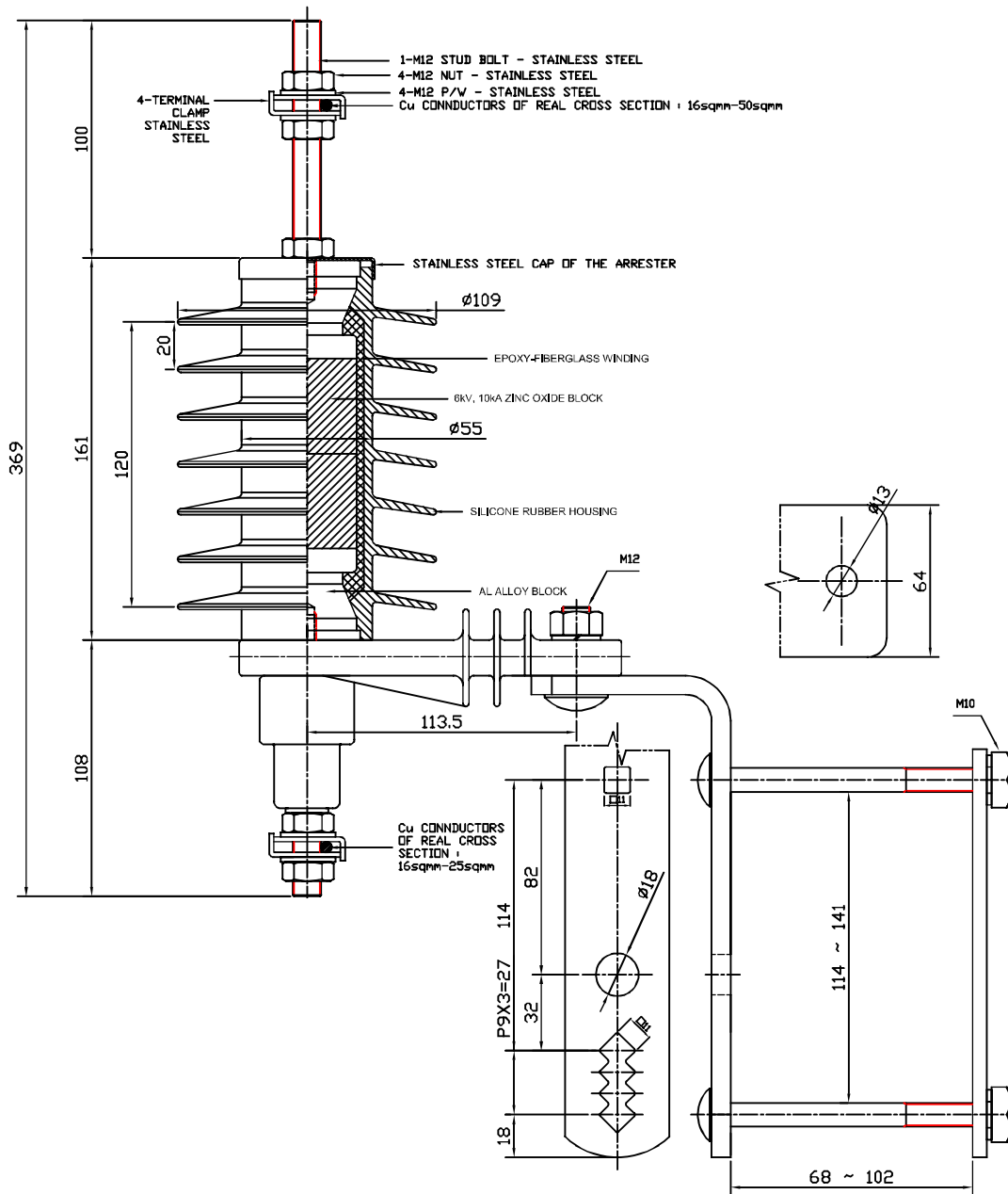


METRIC DIMENSIONS UNLESS OTHERWISE NOTED

No.	DATE	REVISION	CHECK



REQUIREMENTS

ARRESTER	
TAPE	CA 12/10.H D
RATED VOLTAGE	12 kV
NORMINAL DISCHARGE CURRENT	10 kA
MCOV	10.2 kV
LINE DISCHARGE CLASS	1
HIGH CURRENT IMPLUSE(4/10 µs)	100kA
TOV CAPABILITY	13.56kV for 1s
RATED SHORT CIRCUIT CURRENT	20kA(0.2s)
RESIDUAL VOLTAGE AT 10kA(In)	39.53 kV
MAX. APP. CANT LOAD	1,710N
PULL STRENGTH	3,500N
MAX. TORQUE	50Nm
IMPULS VOLTAGE(1.2/50 µs)	100kV
POWER FREQUENCY VOLTAGE(WET)	50kV
LEAKAGE DISTANCE	503 mm
FLASHOVER DISTANCE	180mm
WEIGHT	3.7 kg
ZnO VARISTOR BLOCKS	
TYPE	ZV0060-040-032
RATED VOLTAGE	6 kV
NORMINAL DISCHARGE CURRENT	5 kA
MCOV	5.1 kV
DIMENSION	Dla. 32 mm/Hlight 40 mm
APPLIED QUANTITY	2 pcs
MANUFATURER	DTR CORPORATION

DRAWN	DESIGN	CHECK	APPROVE	DATE
	C.H.PARK		S.Y.JUNG	
	AUG.19.2011		AUG.19.2011	
PART	12kV POLYMER SURGE ARRESTER OF HEAVY DUTY			
NAME	CA 12/10.H D	DWG. NO.	(E)AS01210H-002	

 **DTR CORPORATION**