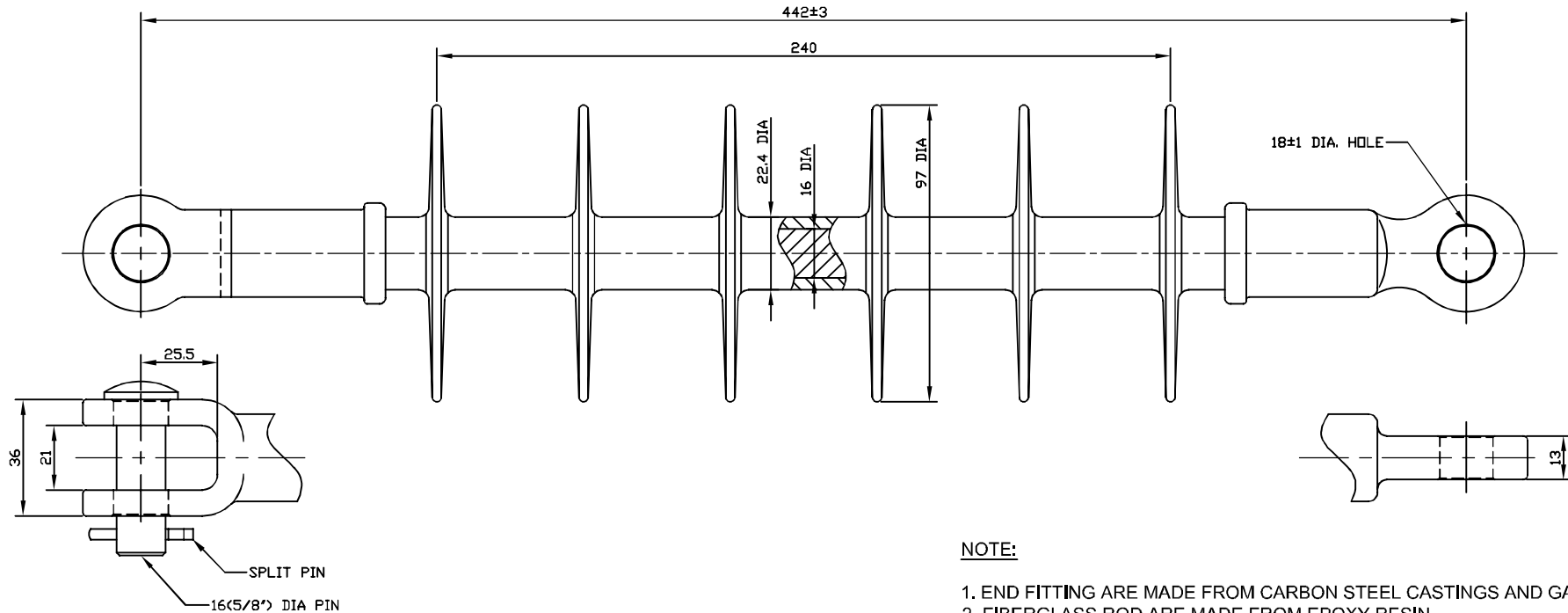


ANSI CLASS DS-28
DTR CATALOG NO. ISB7-0693-AGH

No.	DATE	REVISION	CHECK

METRIC DIMENSIONS UNLESS OTHERWISE NOTED



NOTE:

1. END FITTING ARE MADE FROM CARBON STEEL CASTINGS AND GALVANIZED
2. FIBERGLASS ROD ARE MADE FROM EPOXY RESIN,
3. THIS ASSEMBLY USES A GALVANIZED STEEL ROUND PIN AND STAINLESS STEEL SPRING COTTER KEY
4. HARDWARE ENDS TO BE STAMPED WITH DTR, DS-28, Manufacturing date, 70kN

REQUIREMENTS

SECTION LENGTH	-----	442 mm
SPECIFIED MECHANICAL LOAD	-----	70 kN
ROUTINE TEST LOAD RATING	-----	35 kN
DRY ARCING DISTANCE	-----	314 mm
LEAKAGE DISTANCE	-----	693 mm
60 Hz DRY FLASHOVER	-----	149 kV
60 Hz WET FLASHOVER	-----	110 kV
POSITIVE IMPULSE CRITICAL FLASHOVER	-----	250 kV
WEIGHT	-----	1.29 kg

The tolerance on all dimensions e.g. diameter, length and creepage distance shall be as follows :
±1.0mm when d<100mm
±2.0mm when d>200mm with a maximum of 50mm

DRAWN	DESIGN	CHECK	APPROVE	DATE
	C.H.PARK		S.Y.JUNG	
	MAR.22.2007		MAR.22.2007	SCALE /
PART	25kV DEAD-END POLYMER INSULATOR OF DISTRIBUTION FOR 70kN			
NAME	DS - 28(ANSI)	DWG. NO.	ISB7-0693-AGH	

DTR CORPORATION