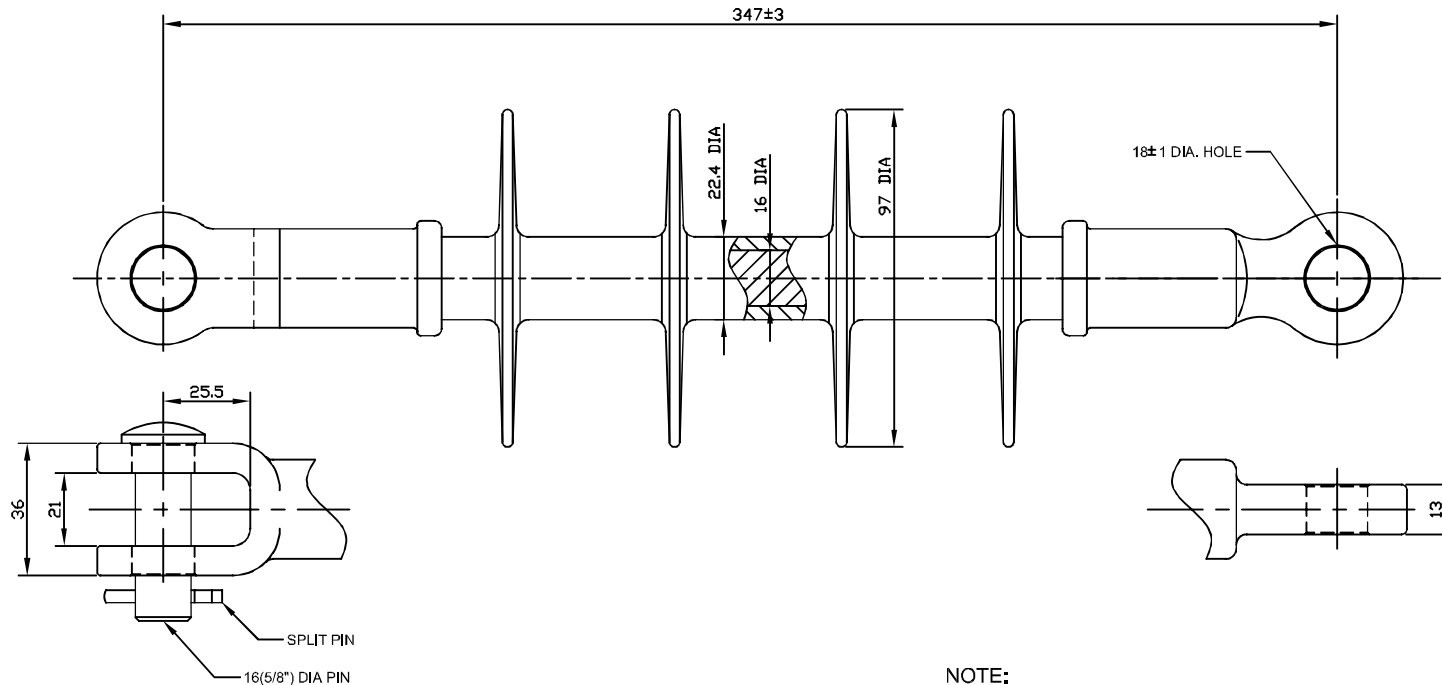


ANSI CLASS DS-15
DTR CATALOG NO. ISA7-0459-AGH

No.	DATE	REVISION	CHECK

METRIC DIMENSIONS UNLESS OTHERWISE NOTED



NOTE:

1. END FITTING ARE MADE FROM CARBON STEEL CASTINGS AND GALVANIZED
2. FIBERGLASS ROD ARE MADE FROM EPOXY RESIN.
3. THIS ASSEMBLY USES A GALVANIZED STEEL ROUND PIN AND STAINLESS STEEL SPRING COTTER KEY

REQUIREMENTS

SECTION LENGTH -----	347 mm
SPECIFIED MECHANICAL LOAD-----	70 kN
ROUTINE TEST LOAD RATING -----	35 kN
DRY ARCING DISTANCE -----	218 mm
LEAKAGE DISTANCE -----	459 mm
60 Hz DRY FLASHOVER -----	110 kV
60 Hz WET FLASHOVER -----	73 kV
POSITIVE IMPULSE CRITICAL FLASHOVER -----	140 kV
WEIGHT -----	0.74 kg

The tolerance on all dimensions e.g. diameter, length and creepage distance shall be as follows :
±1.0mm when d<100mm
±2.0mm when d>100mm with a maximum of 50mm

DRAWN	DESIGN	CHECK	APPROVE	DATE
T.Y.KIM	K.C.PARK		S.Y.JUNG	
MAR.20.2007	MAR.20.2007		MAR.20.2007	SCALE /
PART	15kV DEAD-END POLYMER INSULATOR OF DISTRIBUTION FOR 70kN			
NAME	DS - 15(ANSI)	DWG. NO.	ISA7-0459-AGH	

DTR CORPORATION