

Efen NH-Latr 00 1P SC G4G4 160A 1 Pole Switch

NZI Part No. 531022

Efen # 33107.0010

Flat Terminal M8. For Baseplate Mounting.

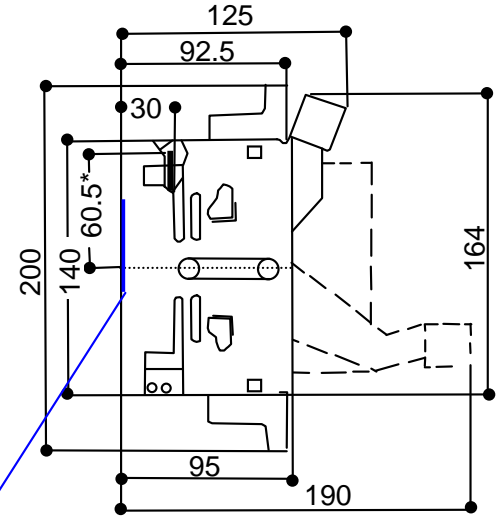
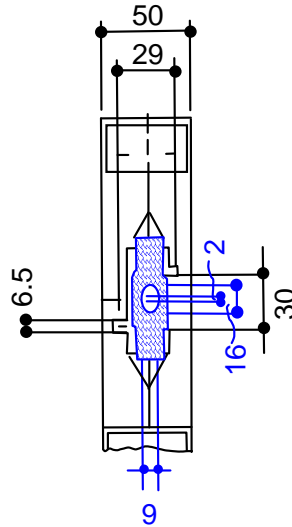
Also available for Busbar Contacting

NZI Part No. 530468

Efen Part No. 33111.0010

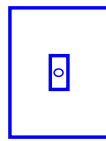
HQ & FACTORY
THOMAS STREET
PO BOX 5 TEMUKA 7948
T +64 3 615 0085

AUCKLAND SALES OFFICE
2/40 ARRENWAY DRIVE
ROSEDALE 0651
T +64 9 479 4794

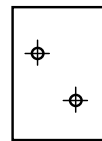


ss-width min. 30 mm

* Dimension 60.5 only valid for flat terminal



Contacting Busbar



Fixing Plate

Terminals

Flat Terminal

Multiple Use

Terminal

G4

U3

U4



mm / sm
2 - 25[□]

mm / sm
25 - 70[□]

For LV fuse links acc. To DIN 43620/1 ¹	Size	00	1	2	3	4a
Rated operational current I _e	A	160	250	400	630	1250 1600
Conventional free air thermal current I _{th}	A	160	250	400	630	1250 1600
Rated operational voltage U _e	V	690	690	690	690	690
Rated insulation voltage U _i	V	800	800	800	800	800
Rated impulse withstand voltage U _{imp}	kV	8	8	8	8	8
Rated conditional short circuit current (When protected by fuse links)	kA	50	50	50	50	50
Weight without fuse links	Kg	0.38	2.4	2.4	2.5	4.2
Sc version		0.36	2.0	2.0	2.4	4.2
Utilisation category IEC/EN 60 947/3	U _e = 400 V U _e = 690 V U _e = 440 V ²	AC-22B AC-21B DC-21B	AC-22B AC-21B DC-21B	AC-22B AC-21B DC-21B	AC-22B AC-21B DC-21B	AC-22B AC-21B DC-21B
Permissible ambient air temperature	°C	-40 up to 55				

¹ When using gR-Fuse-Links (VDE 0636/23), please ask for information
² Size 00 I_e = 100 A