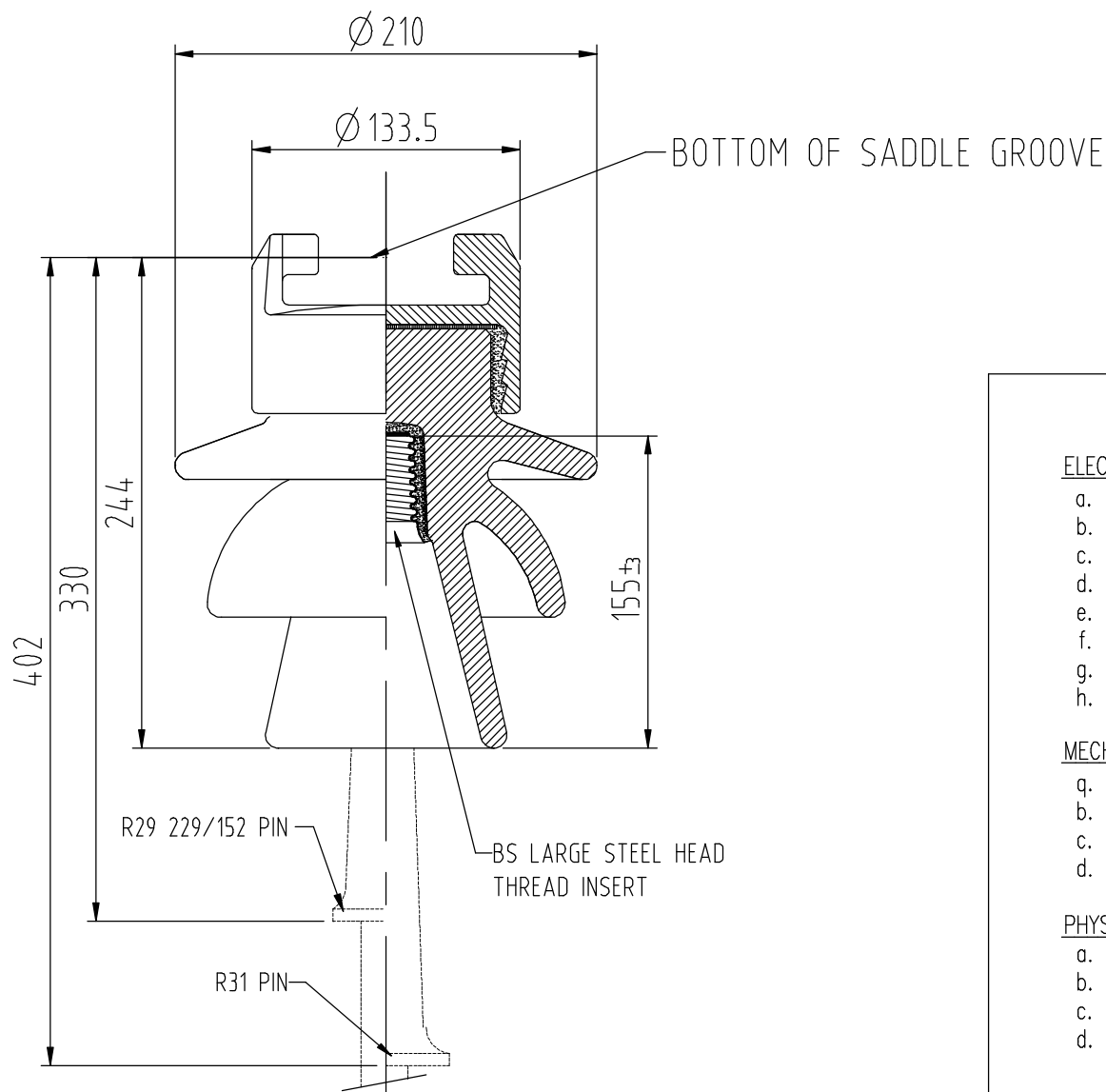


ALL DIMENSIONS IN MILLIMETRES - DO NOT SCALE - IF IN DOUBT PLEASE ASK



### Technical Specification

#### ELECTRICAL CHARACTERISTICS

	DESIGNED VALUES
a. Nominal System Voltage	33 kV
b. Power Frequency withstand voltage – dry	90 kV
c. Power Frequency withstand voltage – wet	70 kV
d. Power Frequency flashover voltage – dry	102 kV
e. Power Frequency flashover voltage – wet	78 kV
f. Power Frequency withstand puncture voltage	> 250 kV
g. Lightning Impulse withstand voltage – dry	175 kV
h. Lightning Impulse flashover voltage – dry	196 kV

#### MECHANICAL CHARACTERISTICS

a. Minimum failing load – Cantilever	9 kN
b. Minimum failing load – Torsion	700 Nm
c. Minimum failing load – Tension	30 kN
d. Minimum failing load – Compression	– kN

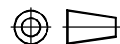
#### PHYSICAL CHARACTERISTICS

a. Nominal minimum creepage distance	510 mm
b. Nominal protected creepage distance	280 mm
c. Nominal flashover distance	230 mm
d. Nominal net weight	5.3 kg

Issue	Mod. No.	Date
C	3465	5.12.12
B	2880	13.3.01

Drawn J. Bain

Date 12.9.1997



FIRST ANGLE PROJECTION

NEW ZEALAND INSULATORS



TEMUKA

NEW ZEALAND INSULATORS LTD  
Tel: +64-3-687 8100  
Fax: +64-3-615 8125  
e-mail: sales@nzinsulators.co.nz

Cat. N° 3372  
33kV CLAMP TOP INSULATOR

D347-0504/C