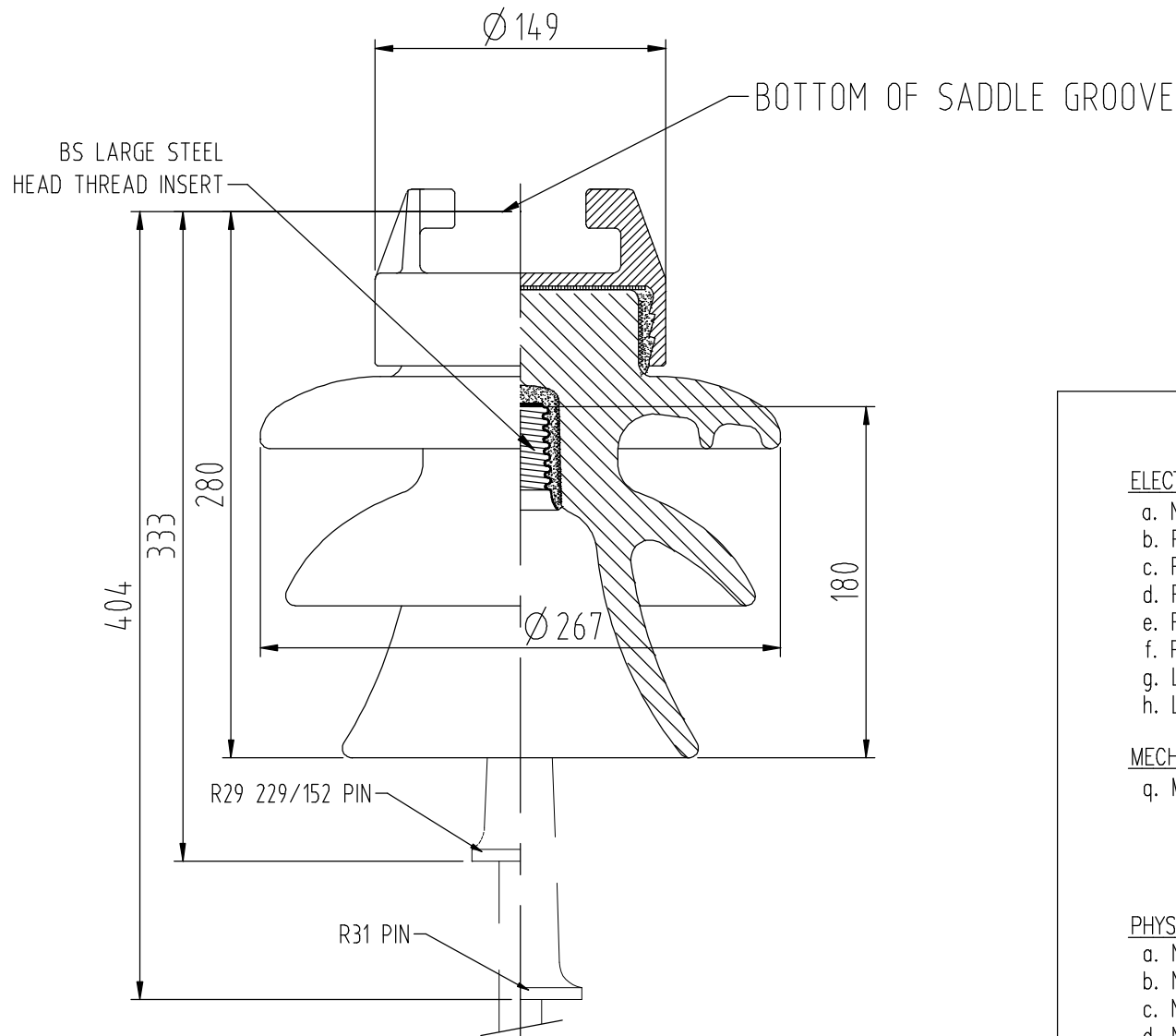


ALL DIMENSIONS IN MILLIMETRES - DO NOT SCALE - IF IN DOUBT PLEASE ASK



Technical Specification

ELECTRICAL CHARACTERISTICS

	DESIGNED VALUES
a. Nominal System Voltage	44 kV
b. Power Frequency withstand voltage – dry	110 kV
c. Power Frequency withstand voltage – wet	90 kV
d. Power Frequency flashover voltage – dry	142 kV
e. Power Frequency flashover voltage – wet	106 kV
f. Power Frequency withstand puncture voltage	>300 kV
g. Lightning Impulse withstand voltage – dry	200 kV
h. Lightning Impulse flashover voltage – dry	240 kV

MECHANICAL CHARACTERISTICS

q. Minimum failing load – Cantilever	11 kN
--------------------------------------	-------

PHYSICAL CHARACTERISTICS

a. Nominal minimum creepage distance	635 mm
b. Nominal protected creepage distance	355 mm
c. Nominal flashover distance	305 mm
d. Nominal net weight	11.0 kg

Issue	Mod. No.	Date
D	3464	5.12.12
C	3290	10.5.10
B	3066	10.7.03

Drawn J. Bain

Date 9.07.2003



NEW ZEALAND INSULATORS



TEMUKA

NEW ZEALAND INSULATORS LTD
Tel: +64-3-687 8100
Fax: +64-3-615 8125
e-mail: sales@nzinsulators.co.nz

Cat. N° 4492
44kV CLAMP TOP ONE PIECE PIN INSULATOR

D341-0506/D